

BUSINESS FOR SALE

INCLUDES
FF&E

\$200,000



SEE VIDEO!



FULLY EQUIPPED FOODIE SETUP ON GEORGE WASHINGTON WAY!

Take advantage of this prime commercial opportunity in Richland! Located on George Washington Way, this 2,150 SF end-cap restaurant space offers exceptional exposure with high daily traffic counts and proximity to downtown and key amenities. This turn-key foodie setup features pristine full kitchen equipment, a drive-thru window, and an inviting patio, making it an ideal choice for a restaurant or café concept. The modern layout creates a welcoming atmosphere with great potential for customization. This sought-after location is ready for your vision! Leasing available. Contact us for more information. **MLS#279880**

- Drive-Thru Window
- End-Cap Suite w/Patio
- 2,150 SF
- Turn-Key Foodie Setup

BUSINESS FOR SALE

1080 GEORGE WASHINGTON WAY | RICHLAND, WA

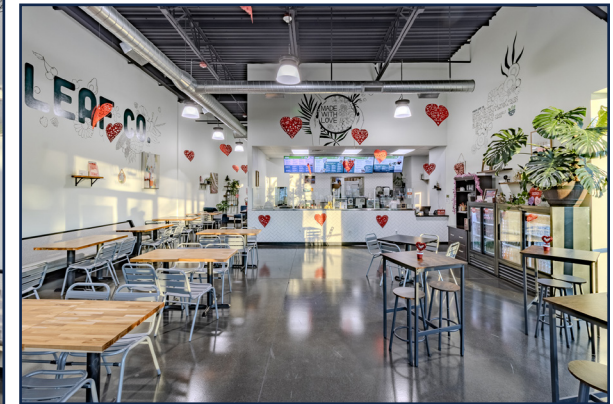
	ITEM	QTY
1	MEGA TOP SANDWICH/SALAD PREP REFRIGERATOR	2
2	COFFEE GRINDER	1
3	ESPRESSO CAPPUCCINO MACHINE	1
4	MEGA TOP SANDWICH/SALAD PREP REFRIGERATOR	1
5	HOTPLATE, COUNTERTOP, GAS	1
6	EQUIPMENT STAND, REFRIGERATED BASE	1
7	ICED TEA BREWER	1
8	WORK TABLE, STAINLESS STEEL TOP	4
9	SANDWICH/PANINI GRILL	1
10	REACH-IN FREEZER	1
11	TWO(2) COMPARTMENT SINK	1
12	THREE(3) COMPARTMENT SINK	1
13	HAND SINK	3
14	WALK IN COOLER, MODULAR, SELF CONTAINED	1
15	PRE-RINSED FAUCET ASSEMBLY	1
16	PRE-RINSED FAUCET ASSEMBLY W/ ADD ON FAUCET	3
17	SANDWICH/PANINI GRILL	1
18	CREPE MAKER	1
19	BLENDER BAR	2
20	IMMERSION HAND MIXER	1
21	METAL TABLE BASE	5
22	LAMINATE TABLE TOP	13
23	WORK TABLE, TOP ONLY	15
24	CAN RACK	1
25	CAN OPENER	1
26	SHELVING WIRE	25
27	FOOD PAN WARMER, COUNTERTOP	1
28	CART, UTILITY/BUSSING	2
29	FOOD SLICER, ELECTRIC	1
30	METAL TABLE BASE	10
31	INGREDIENT BIN	3

EQUIPMENT LIST



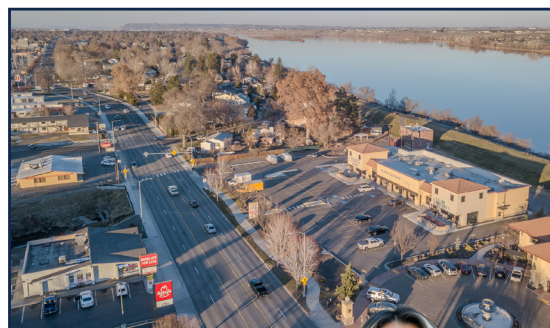
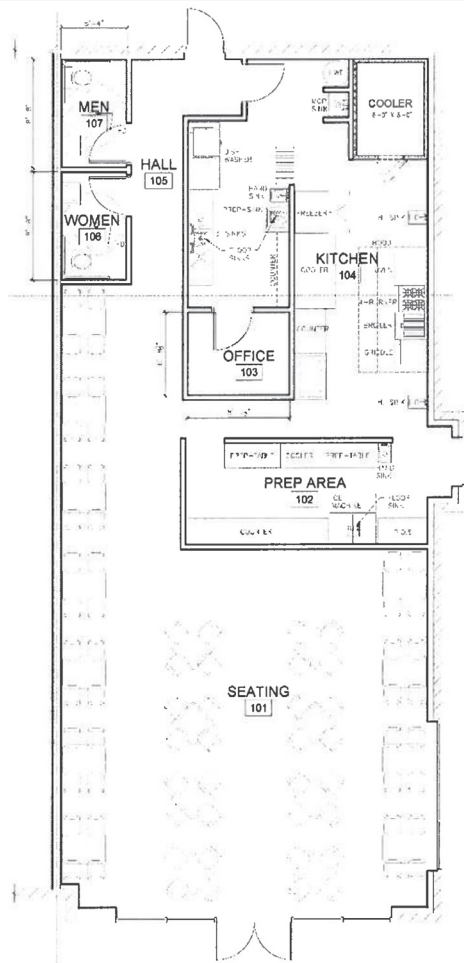
FOR
SALE / LEASE

1080 GEORGE WASHINGTON WAY | RICHLAND, WA



FOR
SALE / LEASE

1080 GEORGE WASHINGTON WAY | RICHLAND, WA



SEE VIDEO!

STRICKER
CRE®



DERRICK STRICKER
DESIGNATED BROKER



derrick@strickercre.com
509.591.9949



JAZMINE MURILLO
COMMERCIAL BROKER

jazmine@strickercre.com
509.591.9949