

4955 TECHNICAL DRIVE
MILFORD, MICHIGAN

INDUSTRIAL FOR SALE
26,334 Square Feet Available



**SIGNATURE
ASSOCIATES**
KNOW SIGNATURE | KNOW RESULTS

MILFORD INDUSTRIAL PARK



PROPERTY FEATURES

- 26,334 square feet available
- 2,480 square foot area prepped for office, concrete deck for second story
- 20' clear height
- (10) 12' x 14' grade level doors, (1) truckwell
- 1000 amps, 244/480-volt, 3-phase, buss ducts
- Radiant heat
- Shop windows for great natural light
- Two existing shop offices and restrooms
- Sale Price: \$2,501,730 (\$95.00/sq. ft.)



For more information, please contact:

JIM MONTGOMERY
(248) 359 0614

jmontgomery@signatureassociates.com

CHRISTOPHER M. D'ANGELO
(248) 948 0109

cdangelo@signatureassociates.com

SIGNATURE ASSOCIATES
One Towne Square, Suite 1200
Southfield, MI 48076
www.signatureassociates.com

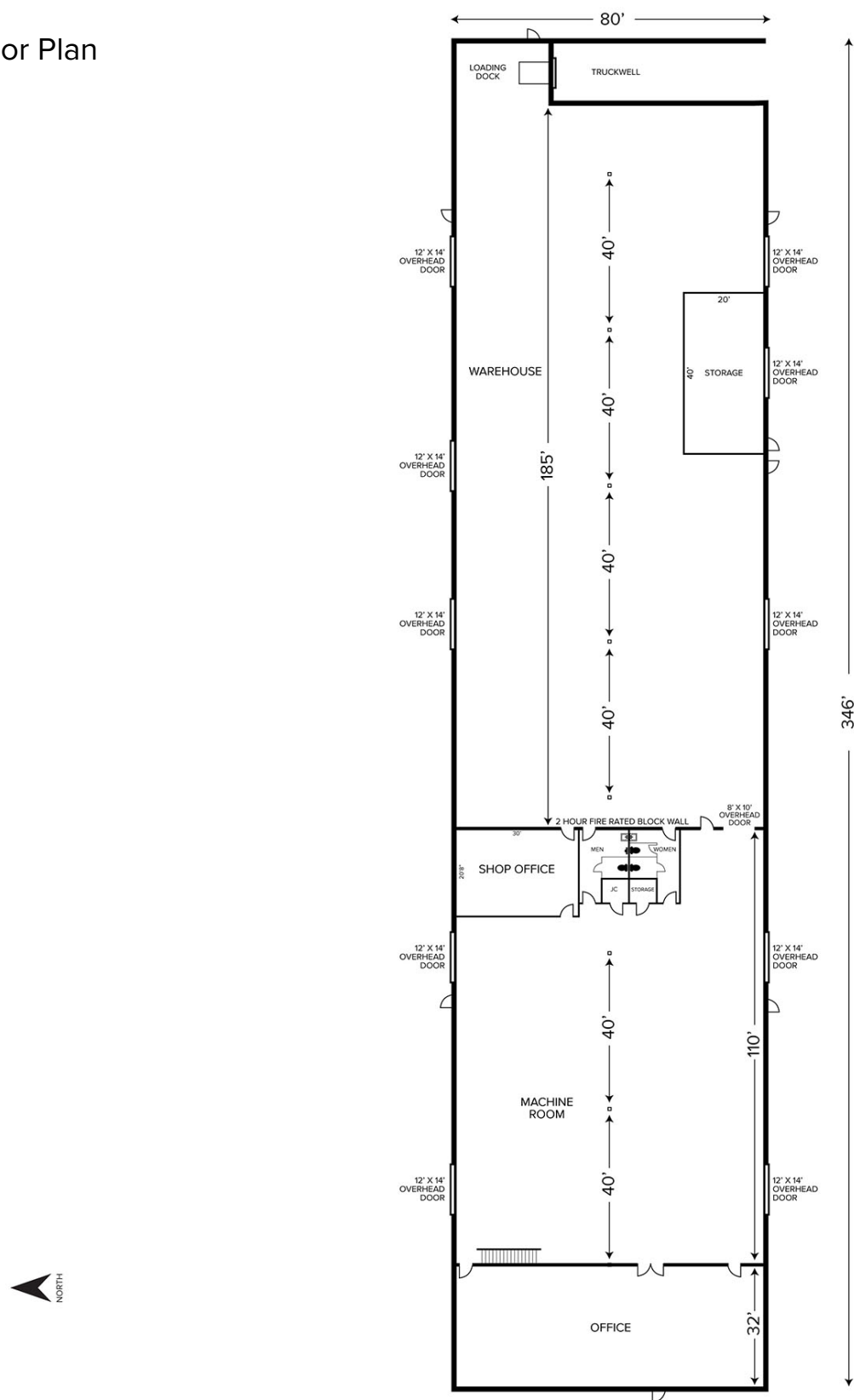
Information is subject to verification and no liability for errors or omissions is assumed. Price is subject to change and listing withdrawal.

4955 Technical Drive – Milford, Michigan

Industrial For Sale

26,334
Square Feet
AVAILABLE

Floor Plan



For more information, please contact:

JIM MONTGOMERY

(248) 359 0614

jmontgomery@signatureassociates.com

CHRISTOPHER M. D'ANGELO

(248) 948 0109

cdangelo@signatureassociates.com

SIGNATURE ASSOCIATES

One Towne Square, Suite 1200

Southfield, MI 48076

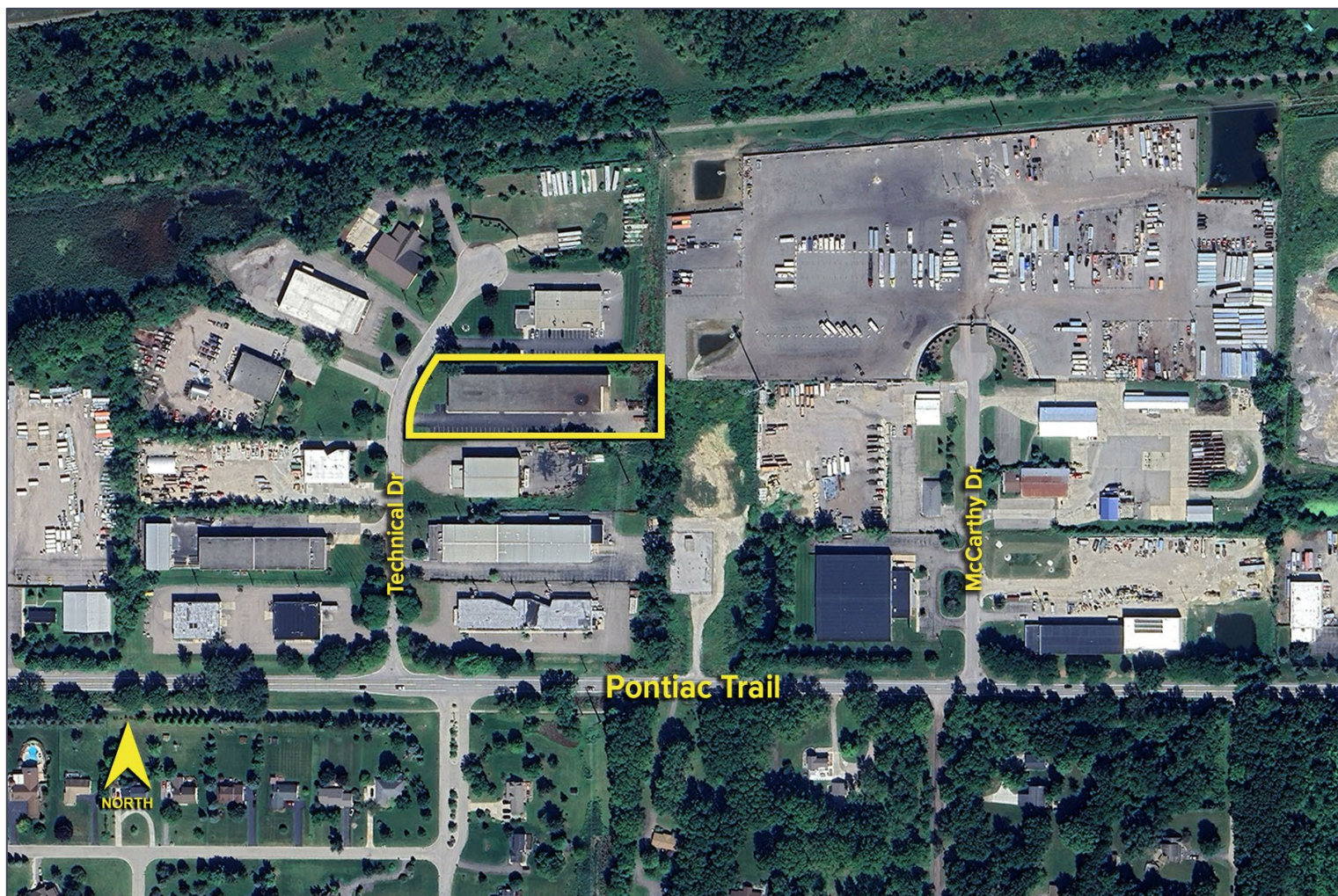
www.signatureassociates.com

4955 Technical Drive – Milford, Michigan

Industrial For Sale

26,334
Square Feet
AVAILABLE

Aerial



For more information, please contact:

JIM MONTGOMERY

(248) 359 0614

jmontgomery@signatureassociates.com

CHRISTOPHER M. D'ANGELO

(248) 948 0109

cdangelo@signatureassociates.com

SIGNATURE ASSOCIATES

One Towne Square, Suite 1200

Southfield, MI 48076

www.signatureassociates.com

Information is subject to verification and no liability for errors or omissions is assumed. Price is subject to change and listing withdrawal.