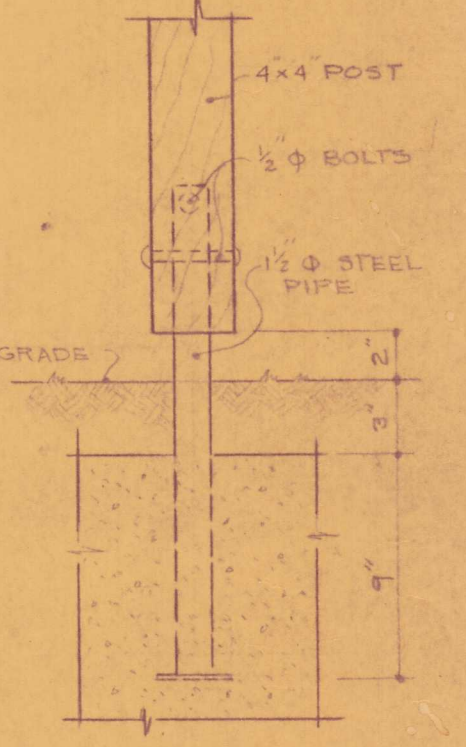
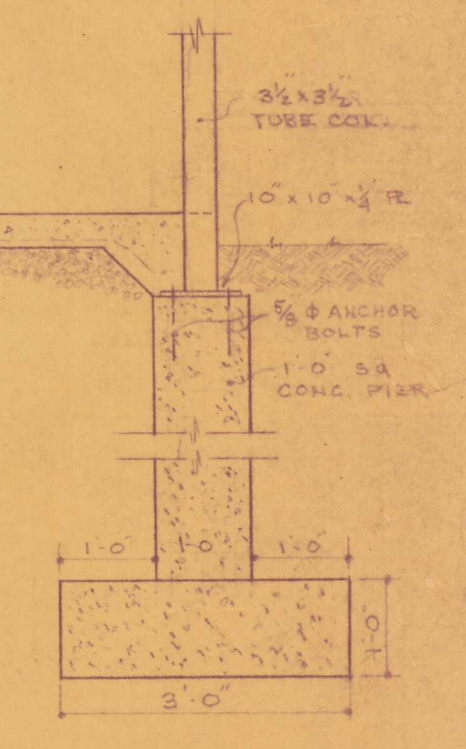


SECTIONAL ELEVATION  
CAST STONE PANEL DETAIL.  
SCALE: 1/4" = 1'-0"



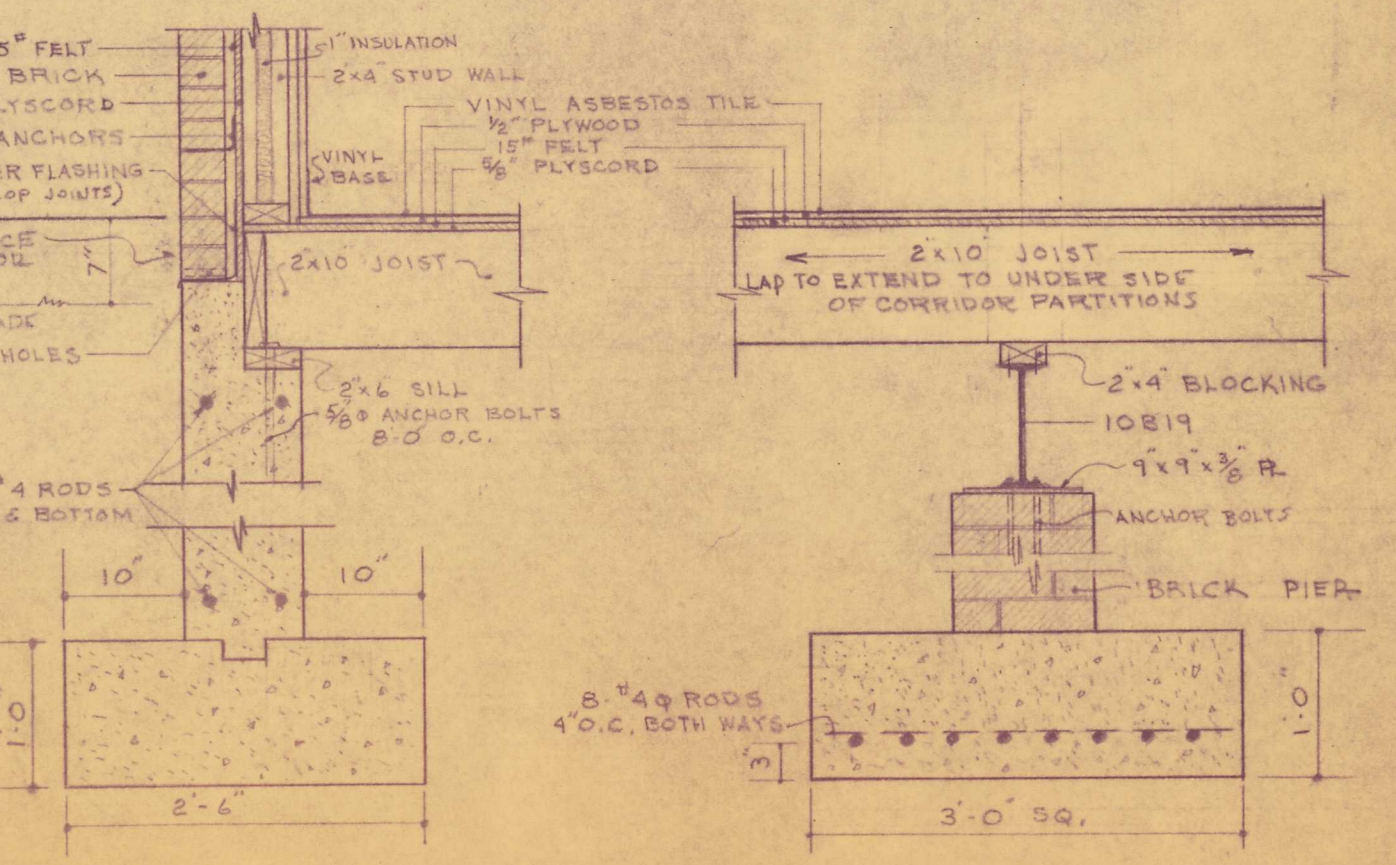
POST DETAIL  
SCALE: 1/4" = 1'-0"



SECTION AT A-A  
SCALE: 1/2" = 1'-0"

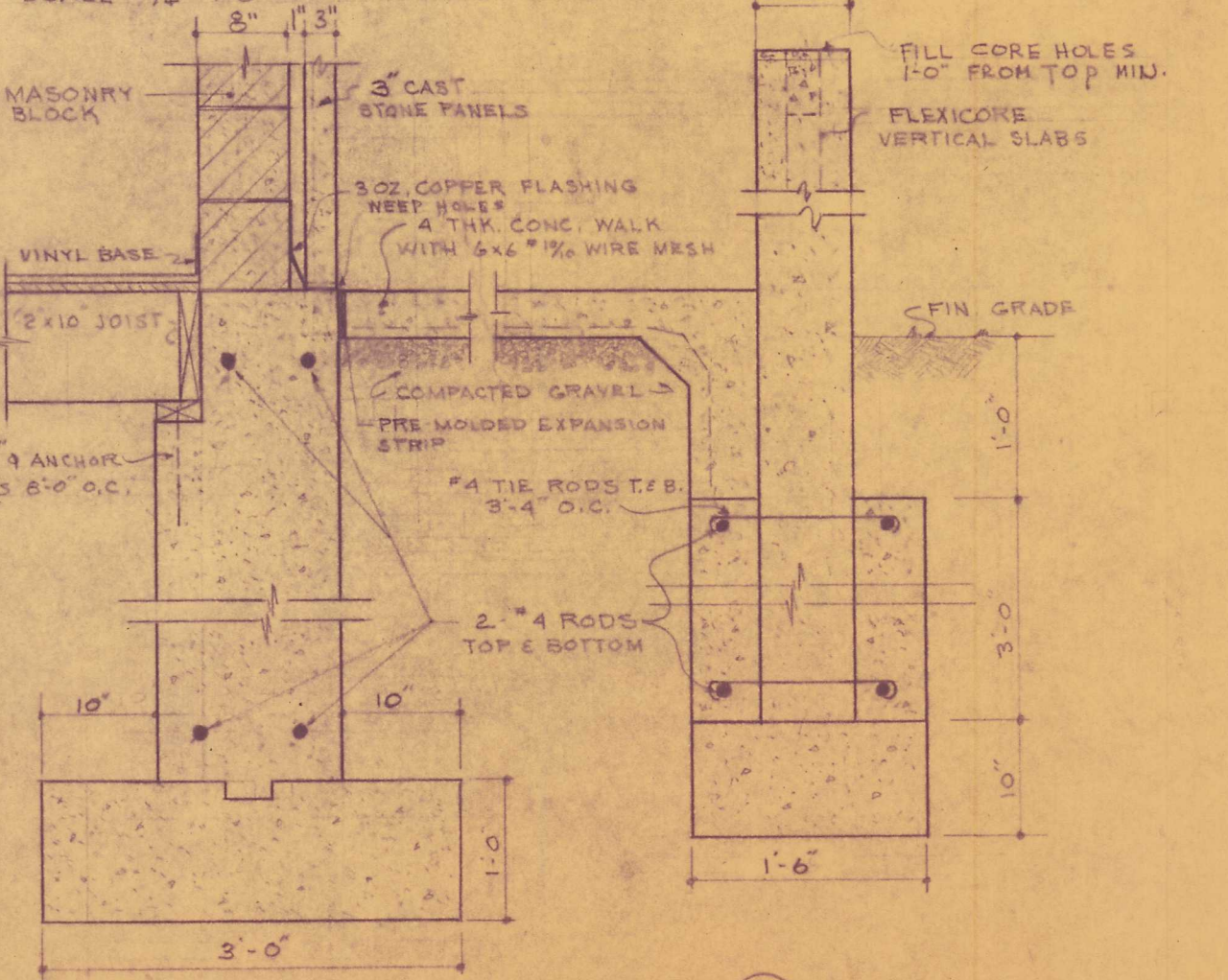
FOUNDATION PLAN  
SCALE: 1/4" = 1'-0"

NOTE: H.B. = FROSTPROOF HOSE 818



SECTION AT B-B  
SCALE: 1/2" = 1'-0"

SECTION AT C-C  
SCALE: 3/4" = 1'-0"



SECTION AT D-D  
SCALE: 3/4" = 1'-0"

CLINIC BUILDING FOR  
DR. ARNAUD K. LAPIERRE & DR. WARREN W. LAPIERRE  
CLINIC DRIVE  
NORWICH, CONN.

SCHOLFIELD, LINDSAY & LIEBIG ARCHITECTS  
WATERFORD,  
CONNECTICUT

DRAWN P.O.W. CHECKED A.S.L. DRAWING 2 DATE APRIL 18, 1962