



WALLISVILLE INDUSTRIAL PARK

8801 WALLISVILLE ROAD | SUITE A | HOUSTON, TX 77029



26,100 SF AVAILABLE

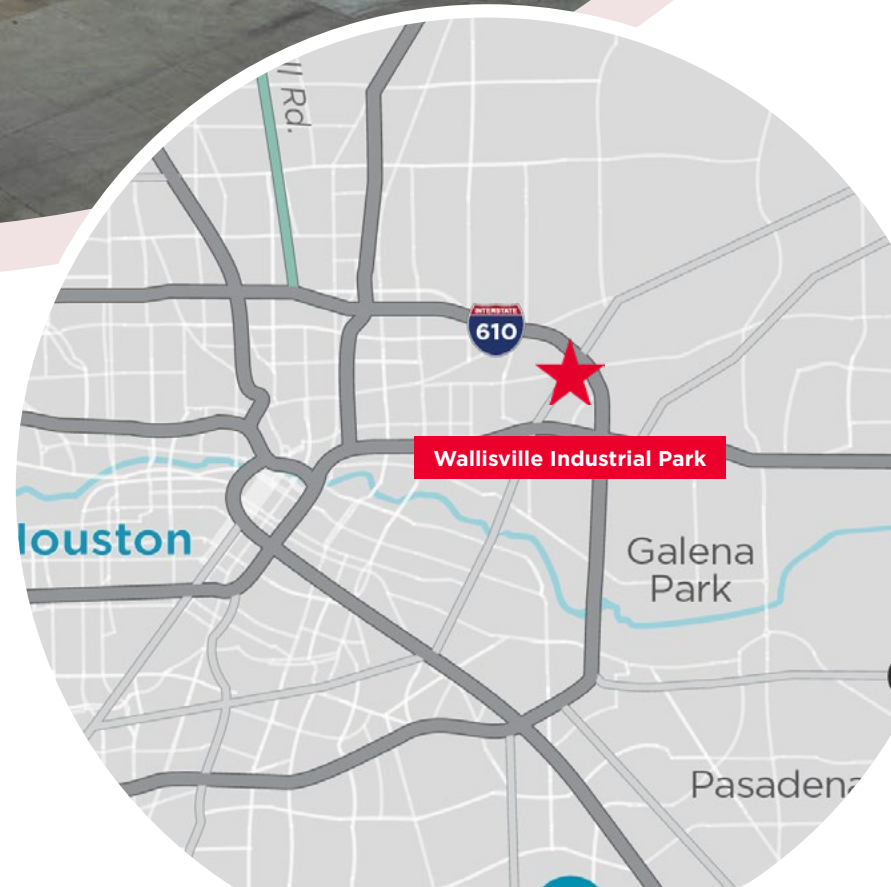


26,100 SF AVAILABLE

LOCATION HIGHLIGHTS

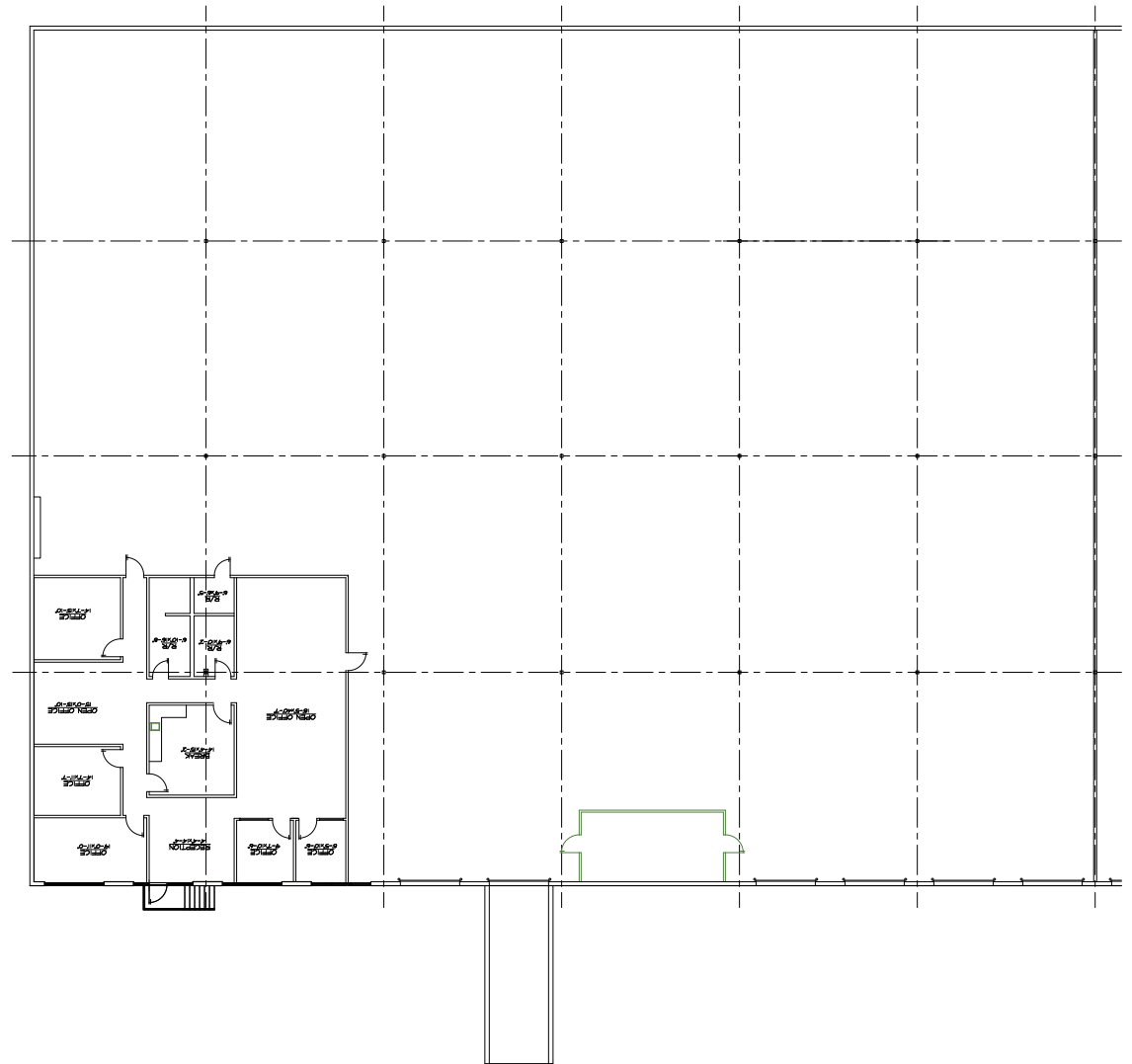
- Close Proximity to Houston Ship Channel
- Direct Access to I-10 East and 610 Loop

8801 WALLISVILLE ROAD | SUITE A | HOUSTON, TX 77029



SPACE HIGHLIGHTS

- 26,100 SF Total Available
- 2,756 SF Office
- 23,344 SF Warehouse
- 22' Clear Height
- Sprinkler System
- (5) Dock High Overhead Doors
- (1) Drive-In Ramp
- Secured Fenced Truck Court
- Available 60 Days' Notice



WALLISVILLE INDUSTRIAL PARK

8801 WALLISVILLE ROAD | SUITE A | HOUSTON, TX 77029



CONTACT

for more information, please contact:

JOHN KRUSE
Managing Director
D: +1 281 688 9234
M: +1 713 304 4919
john.kruse@cushwake.com

CARTER HOLMES
Senior Associate
D: +1 281 688 9274
M: +1 713 417 5447
carter.holmes@cushwake.com

 **CUSHMAN &
WAKEFIELD**
cushmanwakefield.com

©2024 Cushman & Wakefield. All rights reserved. The information contained in this communication is strictly confidential. This information has been obtained from sources believed to be reliable but has not been verified. NO WARRANTY OR REPRESENTATION, EXPRESS OR IMPLIED, IS MADE AS TO THE CONDITION OF THE PROPERTY (OR PROPERTIES) REFERENCED HEREIN OR AS TO THE ACCURACY OR COMPLETENESS OF THE INFORMATION CONTAINED HEREIN, AND SAME IS SUBMITTED SUBJECT TO ERRORS, OMISSIONS, CHANGE OF PRICE, RENTAL OR OTHER CONDITIONS, WITHDRAWAL WITHOUT NOTICE, AND TO ANY SPECIAL LISTING CONDITIONS IMPOSED BY THE PROPERTY OWNER(S). ANY PROJECTIONS, OPINIONS OR ESTIMATES ARE SUBJECT TO UNCERTAINTY AND DO NOT SIGNIFY CURRENT OR FUTURE PROPERTY PERFORMANCE.