



SAN FRANCISCO, CA 94133

300 Broadway

FOR LEASE

**Jackson Square
San Francisco**

Rare 1,500-5,000 SF
Creative Suites

CHARLIE CUTLER

Partner

Email: charlie@calcosf.com

Cell: 415.850.4935

DRE # 02026787

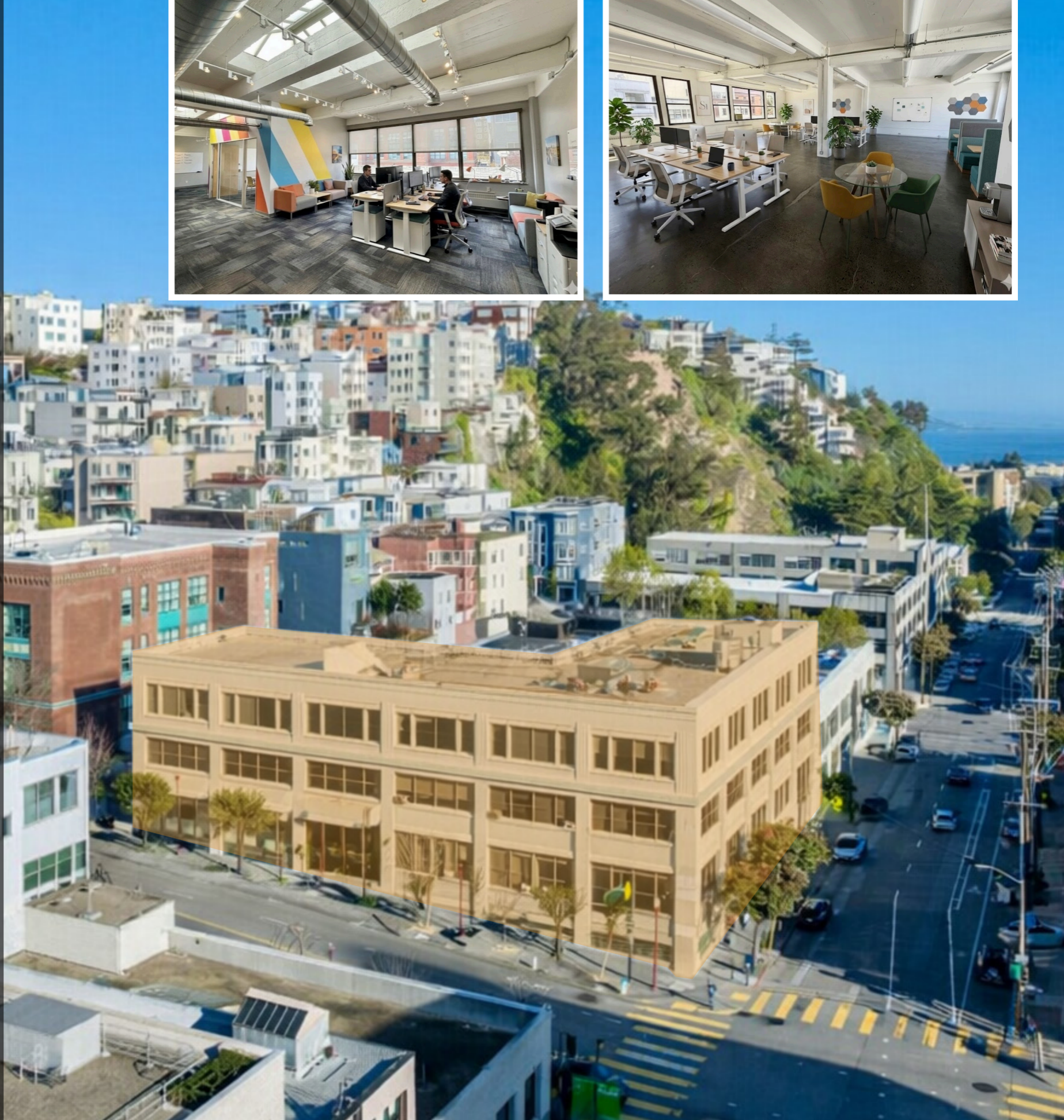
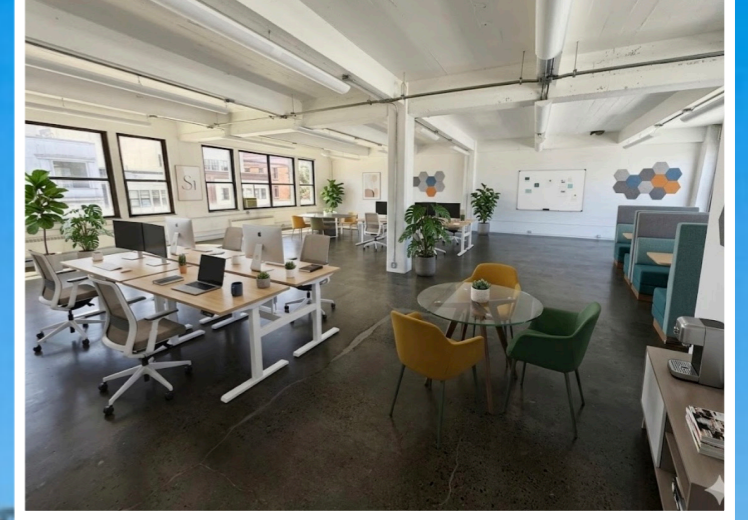
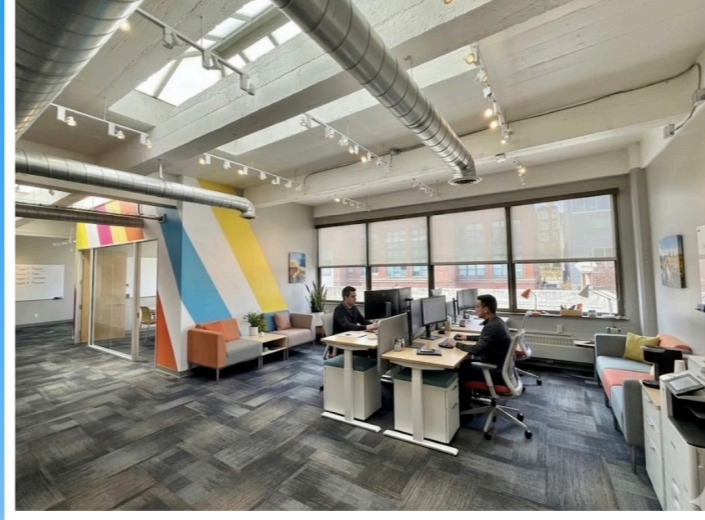
LIV MASON

Associate

Email: liv@calcosf.com

Cell: 650.787.2364

DRE #02245475



We're Here to Help – Reach Out Today!

425 2nd St. Suite 450, San Francisco, CA 94107 | info@calcosf.com | (415) 970-0000 | calcosf.com

PROPERTY HIGHLIGHTS

| 300 Broadway



Professional Property Management



Prime Jackson Square location



Abundance of Natural Light



Tenant Improvements Available



Walkable to Coit Tower, Bix, Transamerica Pyramid, Cotogna, Kokkari Estiatorio



Low Cost Structure, Full Service (except Janitorial)



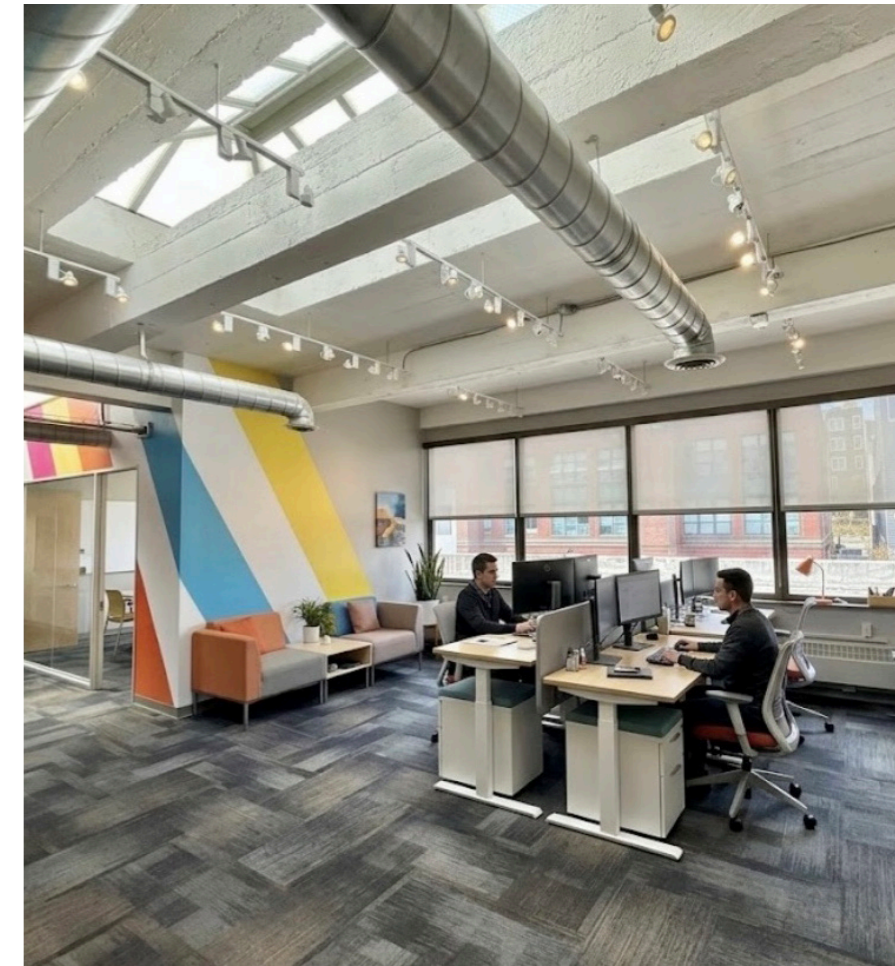
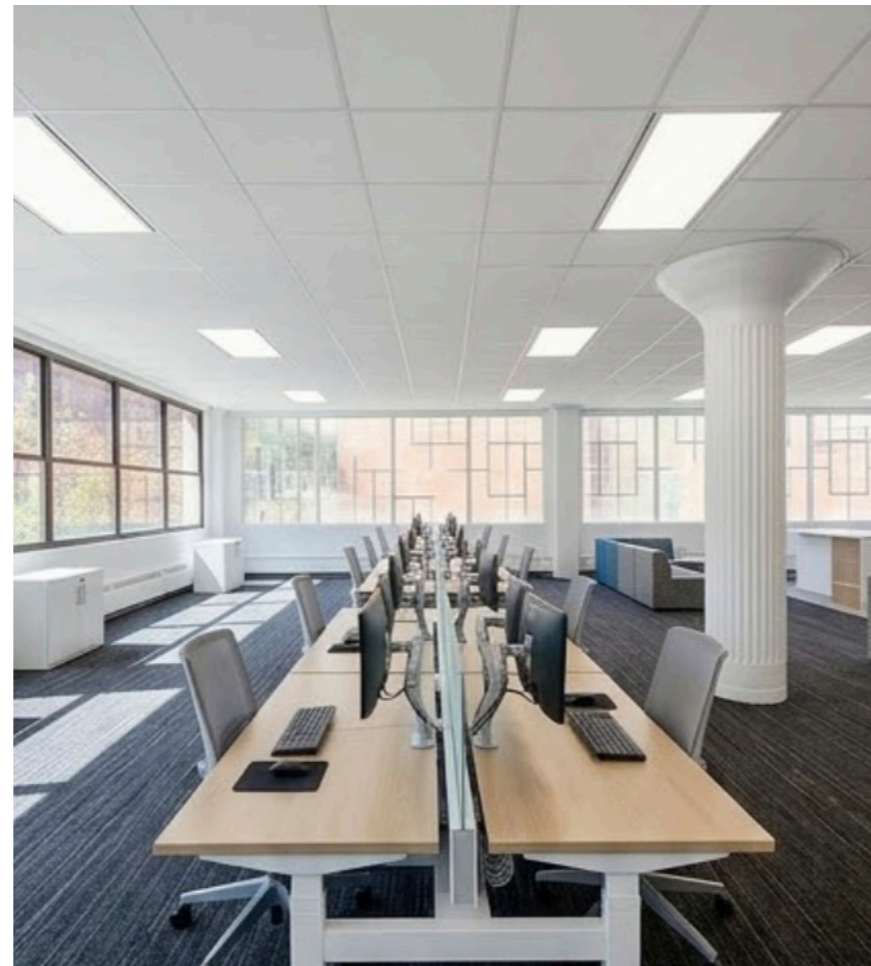
Security: Key Fob Access



Passenger and Freight Elevator



Ability To Scale Onsite; Lease What's Required Today & Add More Sqft Later

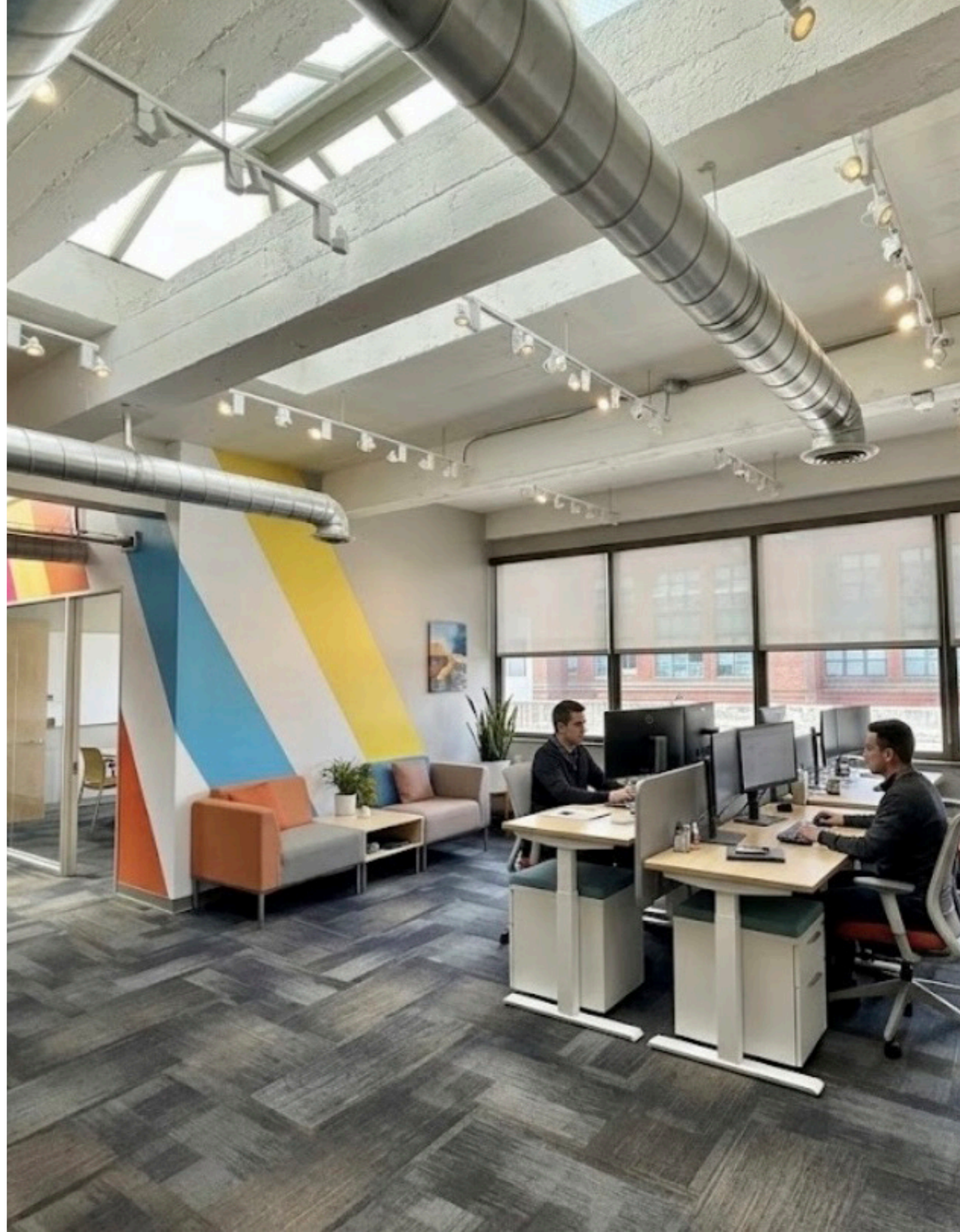
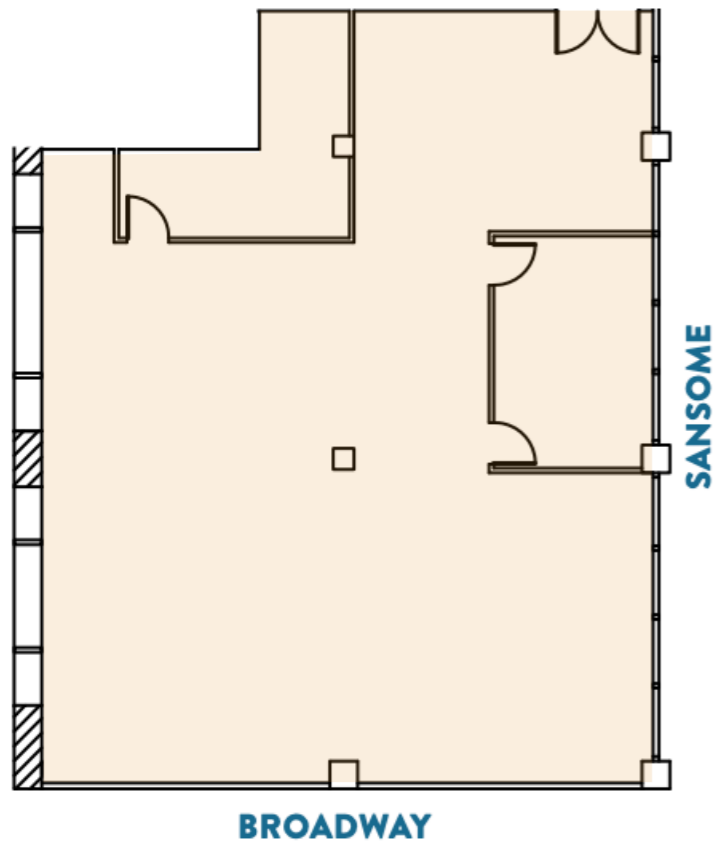


BUILDING ATTRIBUTES

| 300 Broadway

SUITE 39: +/- 2,666 SF

- Very Bright Suite With Atrium Skylights
- Abundant Natural Light Windowline
- Large Conference Room
- Updated Kitchen With Fridge, Dishwasher
- High Exposed Concrete Ceilings
- Ideal Tech/AI Office With 24/7 Access

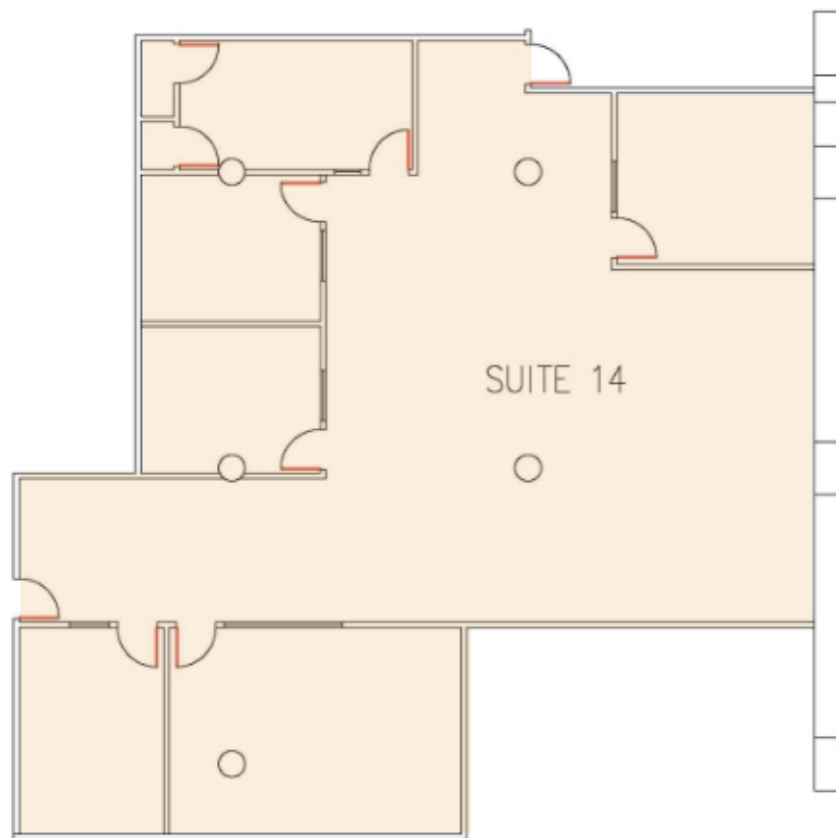


BUILDING ATTRIBUTES

| 300 Broadway

SUITE 14: +/- 3,063 SF

- Extra High Exposed Concrete Ceiling
- Bright Windowline, Lots Of Natural Light
- 3/4 Offices + Open Workspace
- Conference Room
- Kitchen
- Ideal Tech/AI Office With 24/7 Access



 **CALCO**
COMMERCIAL, INC.



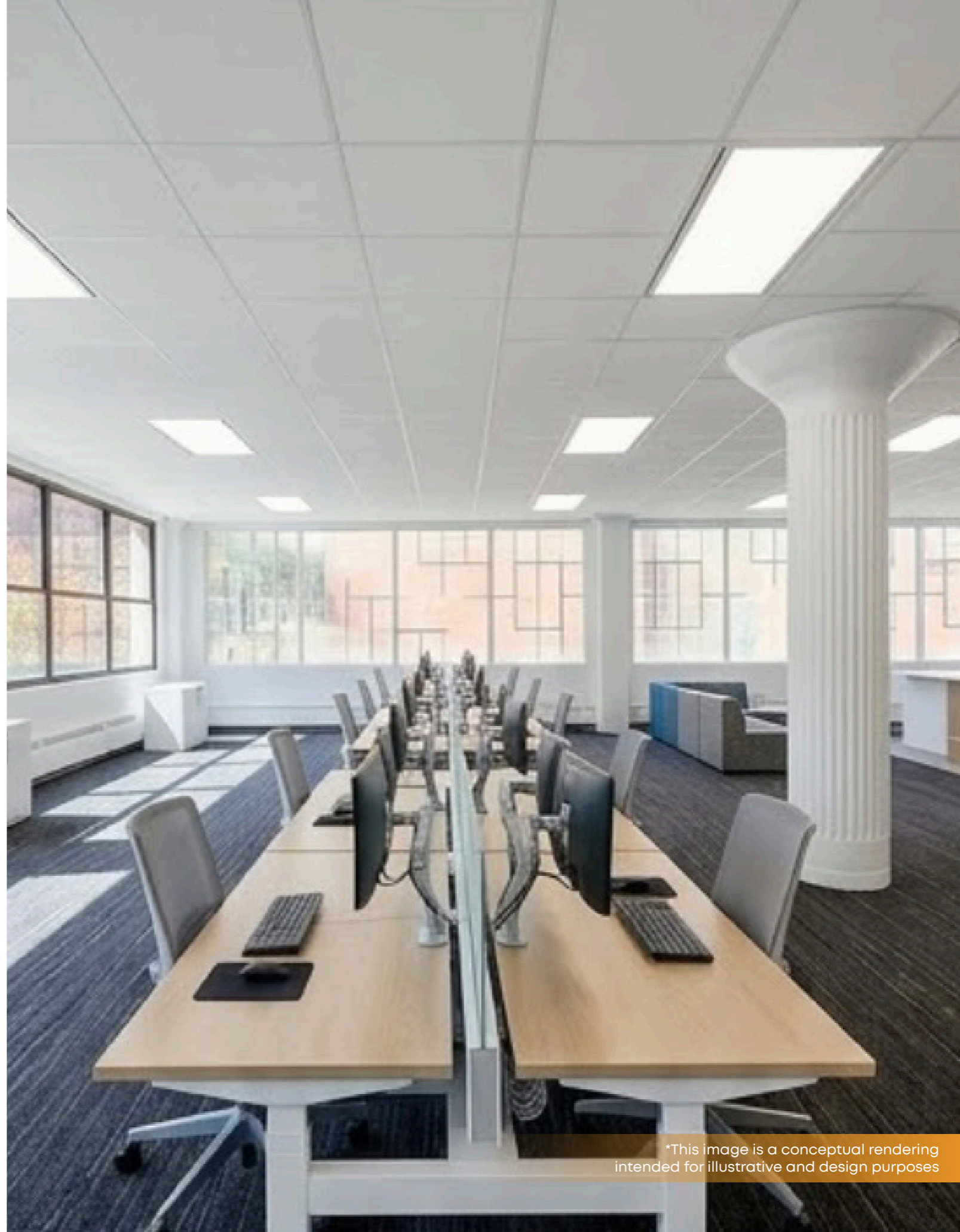
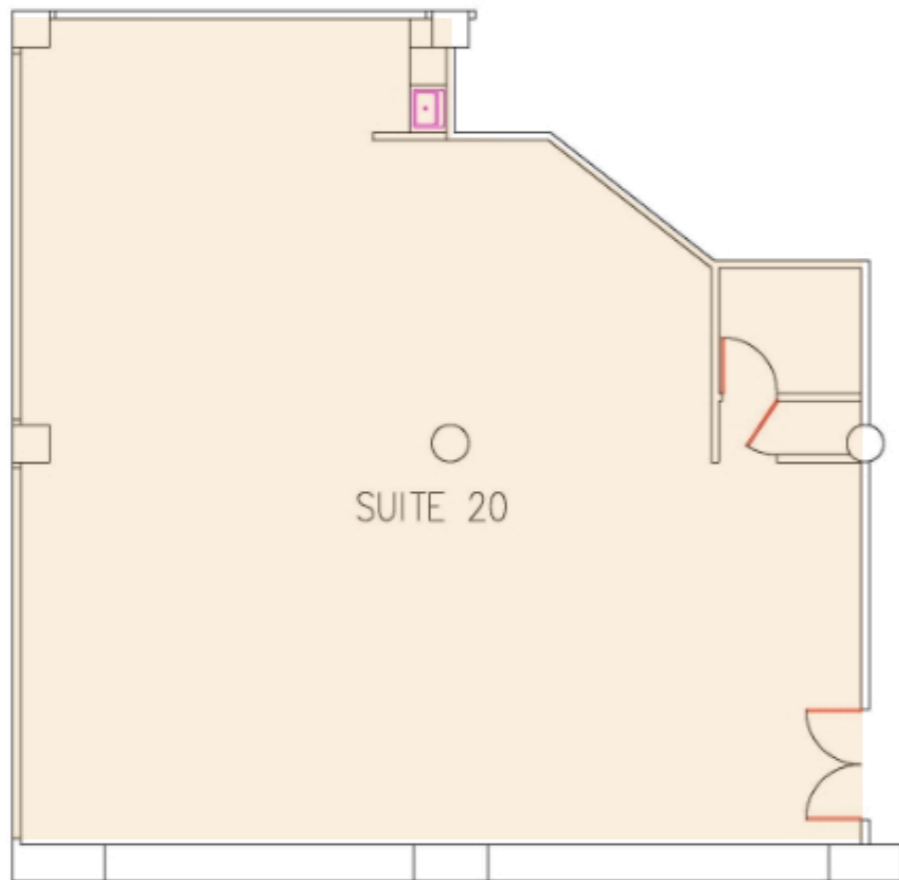
*This image is a conceptual rendering intended for illustrative and design purposes

BUILDING ATTRIBUTES

| 300 Broadway

SUITE 20: +/- 2,196 SF

- Open Kitchen/Lounge Area
- Excellent Natural Light
- Operable Windows
- Open Plan - Additional Rooms Can Be Added
- Ideal Tech/AI Office With 24/7 Access

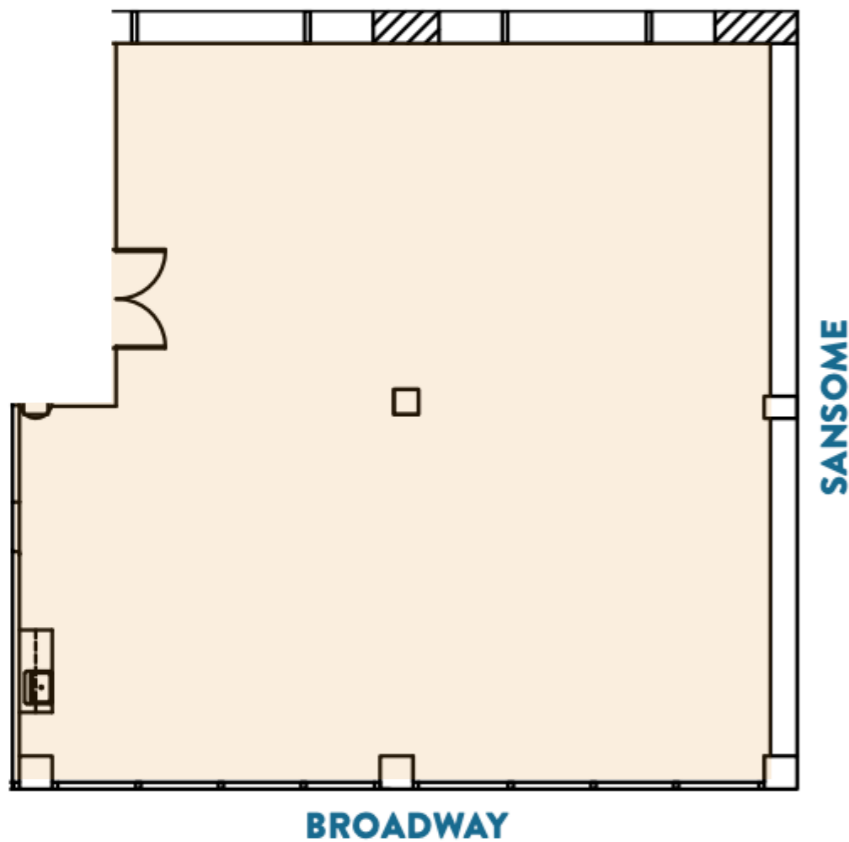


BUILDING ATTRIBUTES

| 300 Broadway

SUITE 30: +/- 2,441 SF

- Polished Concrete Floors
- Bright Window Line - Great Natural Lighting
- Views Of The Downtown
- Operable Windows
- Open Plan - Additional Rooms Can Be Added
- Ideal Tech/AI Office With 24/7 Access



BUILDING ATTRIBUTES

| 300 Broadway

901 SANSOME: 5,278 SF

- Rare Flex Space In Jackson Square
- Good Ceiling Height
- 180 Degree Window Line
- Standalone Unit
- Ideal For Robotics, Hardware, Prototyping, Office
- Two (2) Showers
- Polished Concrete Floor
- Exposed Brick Aesthetic
- Abundant Natural Light
- Full HVAC
- Private Entrance From Sansome Street
- Ideal Tech/AI Office With 24/7 Access
- Rollup Door On Sansome Street
- Easy Load/Unload Access



ADDITIONAL VACANCIES

| 300 Broadway

Suite 30: 2,441 SF **LEASED**

Suite 39: 2,666 SF **LEASED**

Suite 20: 2,196 SF

Suite 22: 740 SF

Suite 26: 2,182 SF

Suite 29: 1,687 SF **LEASED**

Suite 14: 3,063 SF

Suite 16: 1,875 SF **LEASED**

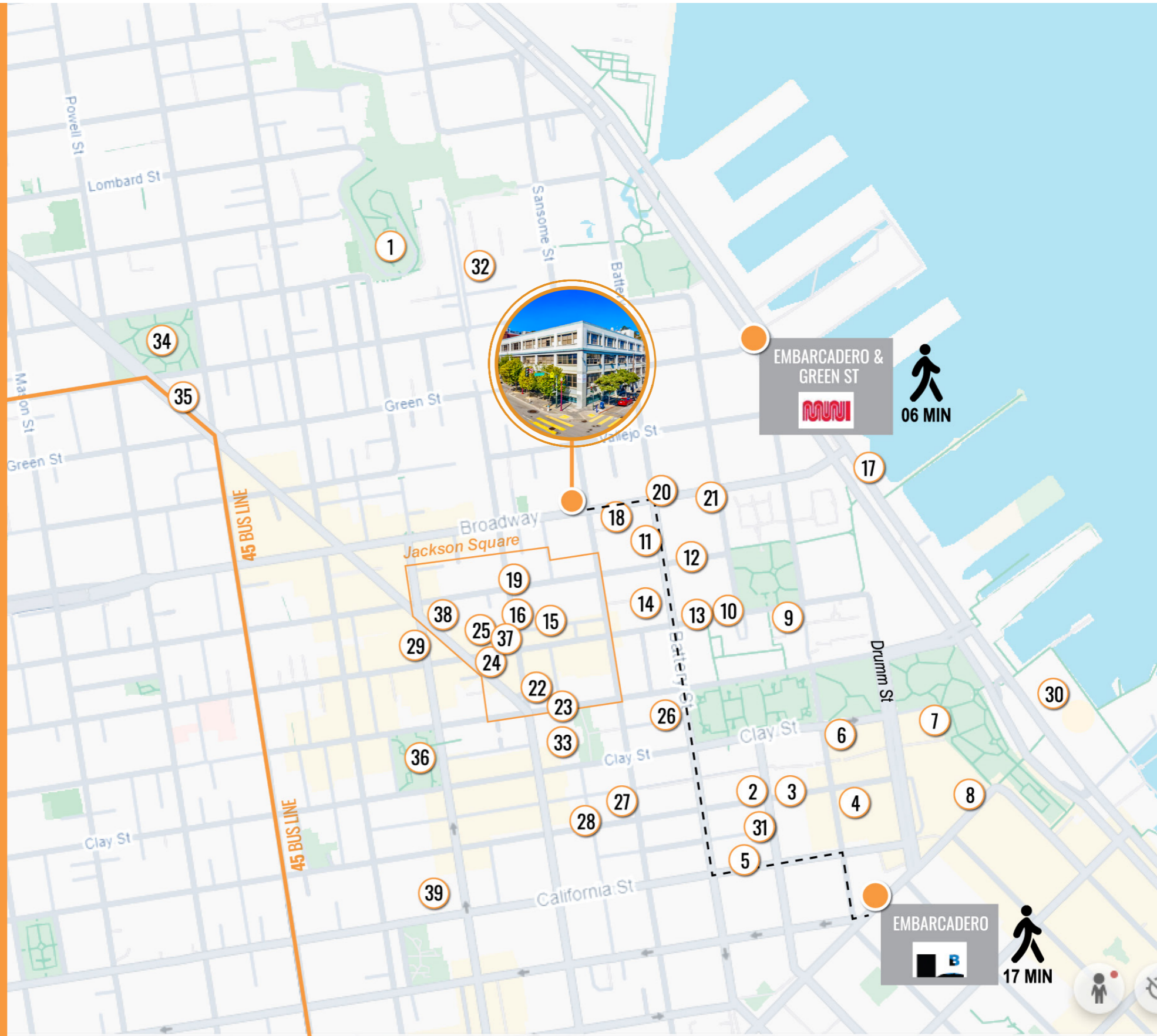
**901 SANSOME – Rare Jackson
Square Flex/Robotics Space:
5,278 SF**



AMENITIES MAP

| 300 Broadway

- 1 Coit tower
- 2 The Grubbies
- 3 Schroeder's
- 4 Chipotle Mexican Grill
- 5 Tadich Grill
- 6 Kirimachi Ramen
- 7 Stone Korean Kitchen
- 8 Philz Coffee
- 9 Safeway
- 10 Kokkari Estiatorio
- 11 The Battery
- 12 The Old Ship Saloon
- 13 The Gateway Theatre
- 14 Noodle Time
- 15 Bix
- 16 The Cigar Bar & Grill
- 17 The Waterfront
- 18 Gambino's New York Subs
- 19 Cotogna
- 20 Subway
- 21 Minted Headquarters
- 22 Barbarossa Lounge
- 23 KUSAKABE
- 24 Sai's Vietnamese Restaurant
- 25 Kells Irish Restaurant & Pub
- 26 San Francisco Wine Society
- 27 The Barrel Room
- 28 Wayfare Tavern
- 29 House of Nanking
- 30 Ferry Building
- 31 Bluestone Lane Coffee Shop
- 32 Hillstone
- 33 Transamerica Pyramid
- 34 Washington Square Park
- 35 Flour + Water Pizzeria
- 36 Chinatown
- 37 LoveFrom
- 38 CANOPY Jackson Square
- 39 Vention



NEARBY AMENITIES

| 300 Broadway



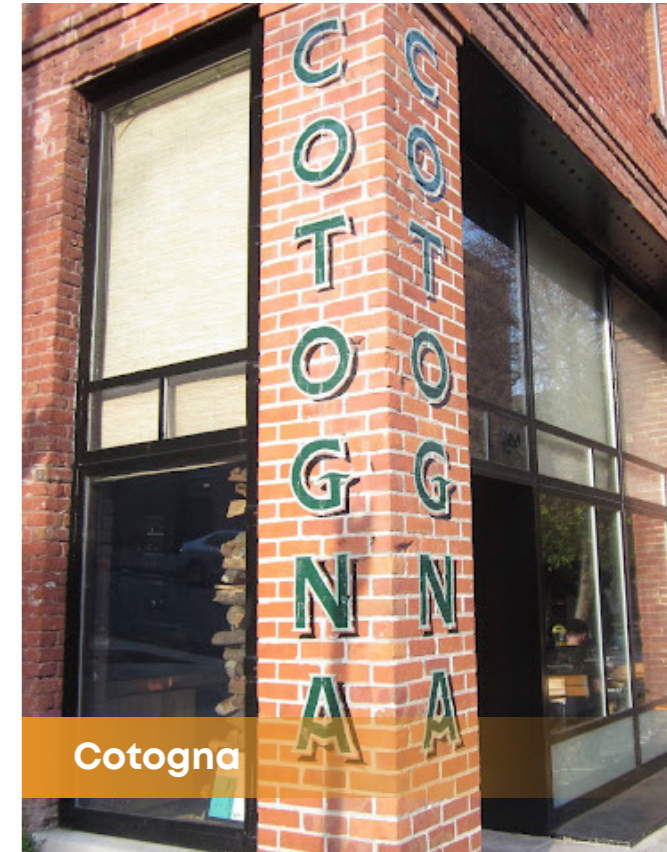
Coit Tower



Bix



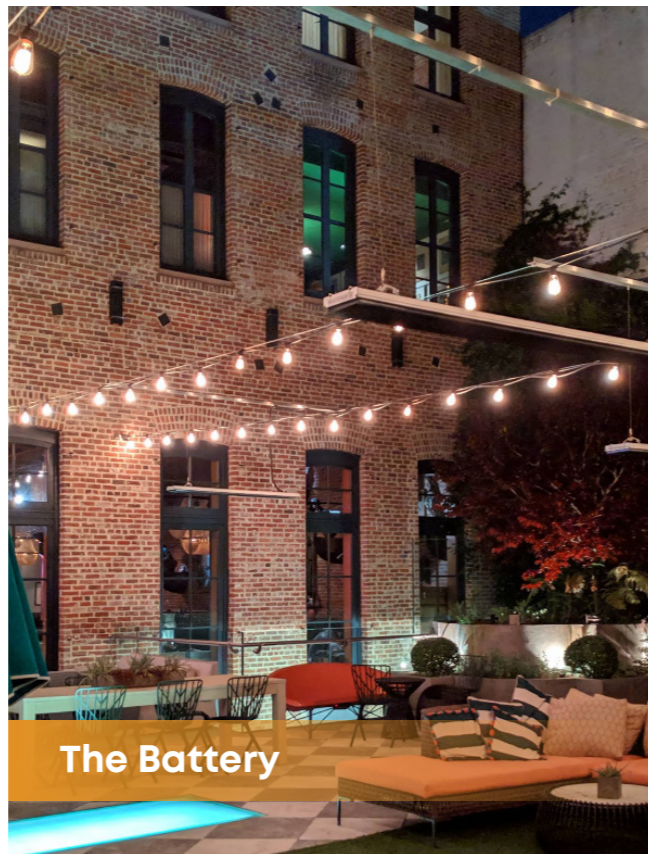
Transamerica pyramid



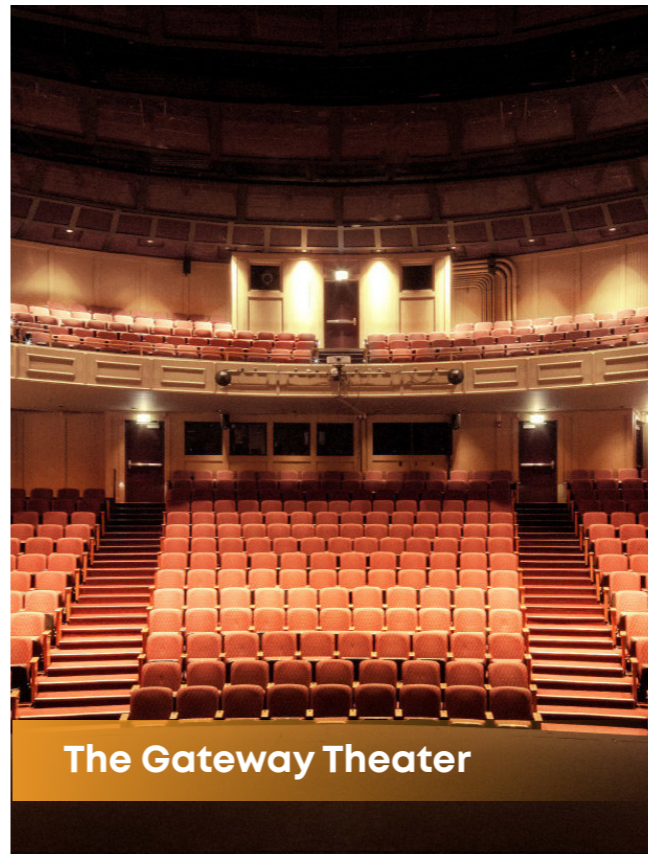
Cotogna



Ferry building



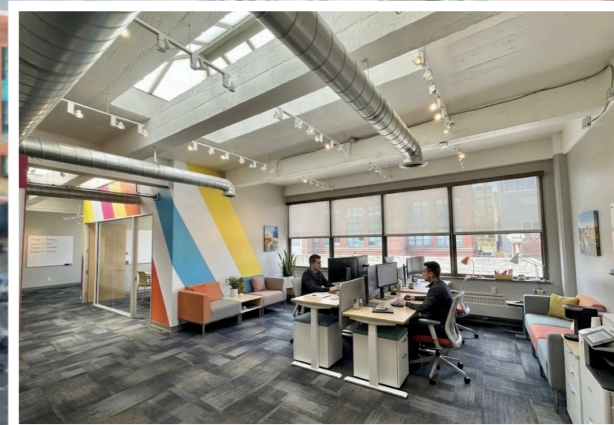
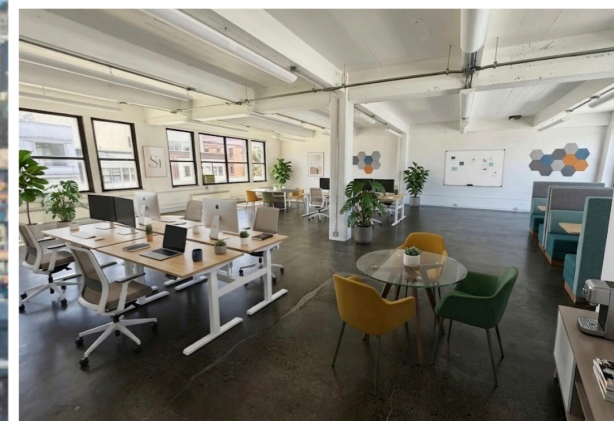
The Battery



The Gateway Theater



Kokkari Estiatorio



CHARLIE CUTLER

Partner
Email: charlie@calcosf.com
Cell: 415.850.4935
DRE # 02026787

LIV MASON

Associate
Email: liv@calcosf.com
Cell: 650.787.2364
DRE #02245475

**PIONEERING REAL ESTATE SOLUTIONS WITH
PROVEN EXPERTISE**

Calco Commercial, founded in 2011 by Scott Mason, brings over 35 years of experience and 2,500+ transactions, totaling over \$2.2 billion in sales and leases. Specializing in leasing and sales of commercial real estate in the San Francisco Bay Area and nationwide, we consistently rank as a top-producing firm. With deep knowledge of the Bay Area market, our team offers clients over three decades of expertise and exceptional customer service, providing the tools and guidance to navigate the ever-changing commercial real estate landscape.