

1,200 SF Available
Good Shepherd Center
8115 N 19th Ave, Phoenix, AZ 85021



Second Gen Nail Salon –
\$18.00 PSF NNN

NaiHorizon

Matt Harper, CCIM
+1 602 393 6604 • matt.harper@naihorizon.com

All information furnished regarding property for sale, rental or financing is from sources deemed reliable, but no warranty or representation is made to the accuracy thereof and same is submitted subject to errors, omissions, change of price, rental or other conditions prior to sale, lease or financing or withdrawal without notice. No liability of any kind is to be imposed on the broker herein.

2944 N 44th St, Suite 200
Phoenix, AZ 85018
+1 602 955 4000
naihorizon.com

Property Details

1,200 SF Available
Good Shepherd Center
\$18.00 PSF + NNN

Location

- Grocery-anchored center
- N/NEC 19th Avenue & Northern
- Close proximity to I-17 Freeway
- Excellent visibility along 19th Avenue
- Densely populated trade area
- Highly trafficked intersection
- Two Hands Corn Dogs coming soon!

Building

- Adjacent to Phoenix Light Rail
- Adjacent to NextCare Urgent Care
- Frontage on 19th Avenue

Suite

SF

A103 1,200 Second Gen Nail Salon

Demographics

1 Mile

3 Miles

5 Miles

Population

22,550

180,507

443,434

Average HH Income

\$51,654

\$53,314

\$56,592

Average Age

35.2

35.3

35.0

Traffic Counts

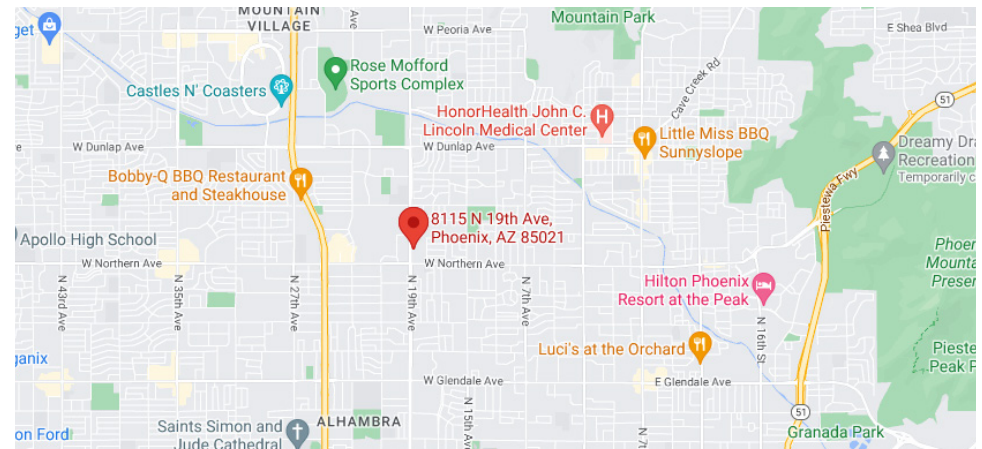
VPD

N 19th Ave

24,300

W Northern Ave

33,971



Matt Harper, CCIM

+1 602 393 6604 • matt.harper@naihonorizon.com

All information furnished regarding property for sale, rental or financing is from sources deemed reliable, but no warranty or representation is made to the accuracy thereof and same is submitted subject to errors, omissions, change of price, rental or other conditions prior to sale, lease or financing or withdrawal without notice. No liability of any kind is to be imposed on the broker herein.

2944 N 44th St, Suite 200

Phoenix, AZ 85018

+1 602 955 4000

naihonorizon.com

Property Photos

1,200 SF Available
Good Shepherd Center
\$18.00 PSF + NNN



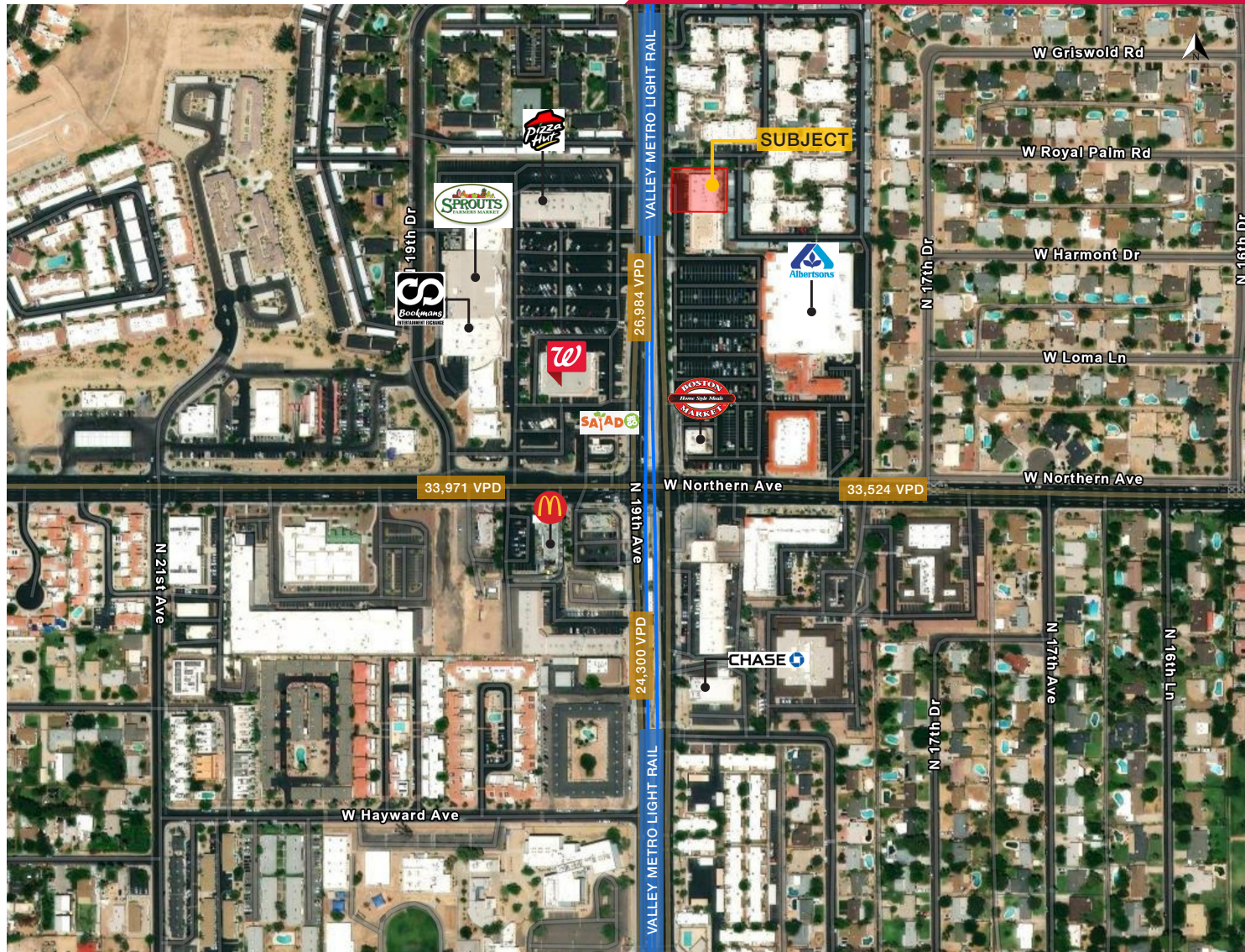
Matt Harper, CCIM
+1 602 393 6604 • matt.harper@naihorizon.com

All information furnished regarding property for sale, rental or financing is from sources deemed reliable, but no warranty or representation is made to the accuracy thereof and same is submitted subject to errors, omissions, change of price, rental or other conditions prior to sale, lease or financing or withdrawal without notice. No liability of any kind is to be imposed on the broker herein.

2944 N 44th St, Suite 200
Phoenix, AZ 85018
+1 602 955 4000
naihorizon.com

Aerial Map

1,200 SF Available
Good Shepherd Center
\$18.00 PSF + NNN



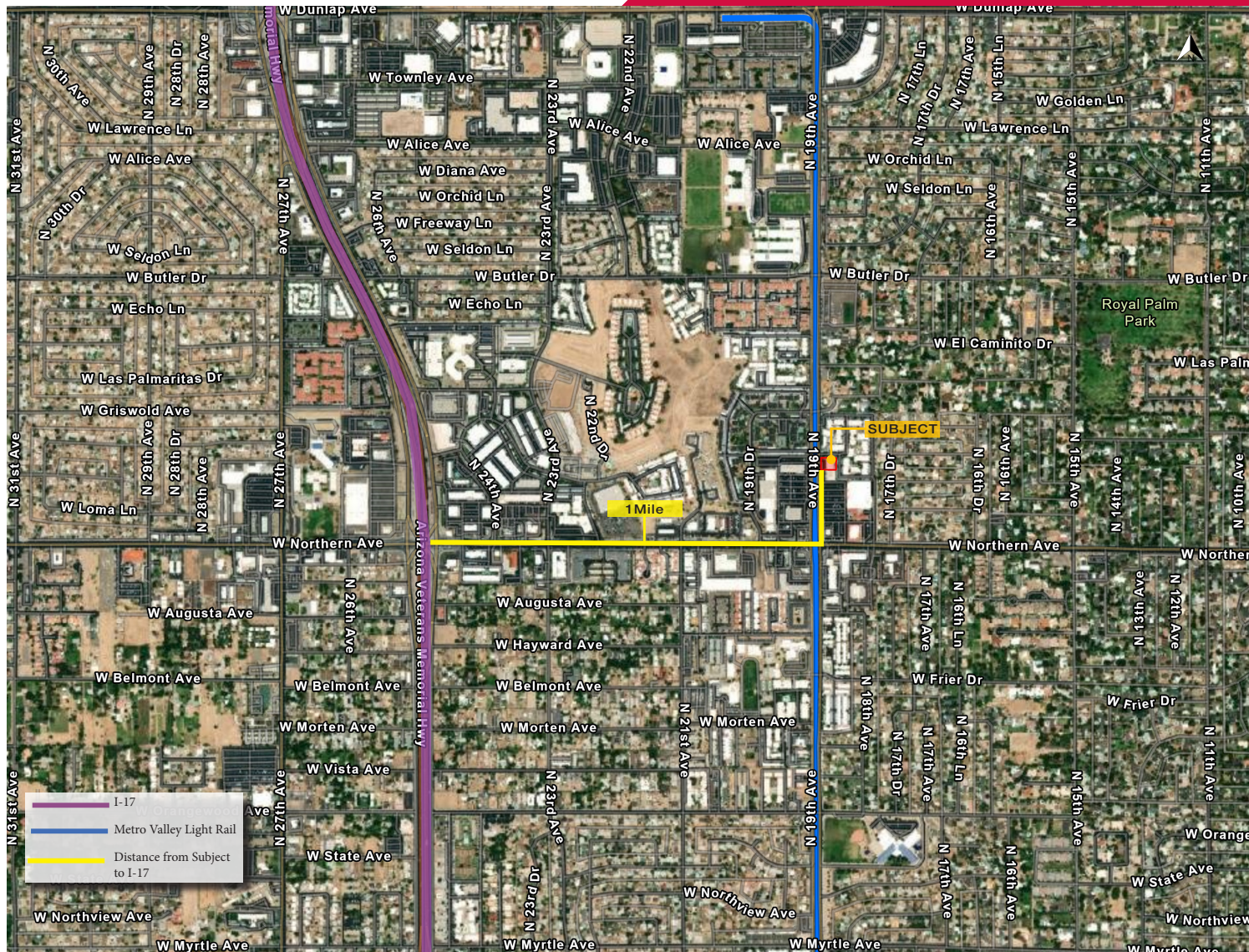
Matt Harper, CCIM
+1 602 393 6604 • matt.harper@naihonorizon.com

All information furnished regarding property for sale, rental or financing is from sources deemed reliable, but no warranty or representation is made to the accuracy thereof and same is submitted subject to errors, omissions, change of price, rental or other conditions prior to sale, lease or financing or withdrawal without notice. No liability of any kind is to be imposed on the broker herein.

2944 N 44th St, Suite 200
Phoenix, AZ 85018
+1 602 955 4000
naihonorizon.com

Aerial Map

1,200 SF Available
Good Shepherd Center
\$18.00 PSF + NNN



Matt Harper, CCIM
+1 602 393 6604 • matt.harper@naihonorizon.com

All information furnished regarding property for sale, rental or financing is from sources deemed reliable, but no warranty or representation is made to the accuracy thereof and same is submitted subject to errors, omissions, change of price, rental or other conditions prior to sale, lease or financing or withdrawal without notice. No liability of any kind is to be imposed on the broker herein.

2944 N 44th St, Suite 200
Phoenix, AZ 85018
+1 602 955 4000
naihonorizon.com