

FOR LEASE

STERLING PLAZA
Former GYM - Retail Space

47 Mazzeo Drive
Randolph, MA



PROPERTY INFORMATION:

<u>Building Size:</u>	60,368± SF
<u>Space Available:</u>	4,220± SF
<u>Ceiling Height:</u>	± 14' Clear
<u>HVAC:</u>	A/C Throughout/Gas heat
<u>Parking:</u>	410 spaces (6.8/1,000 SF)
<u>RE Taxes:</u>	\$ 3.10/SF (FY 24)
<u>Water/Sewer:</u>	Municipal

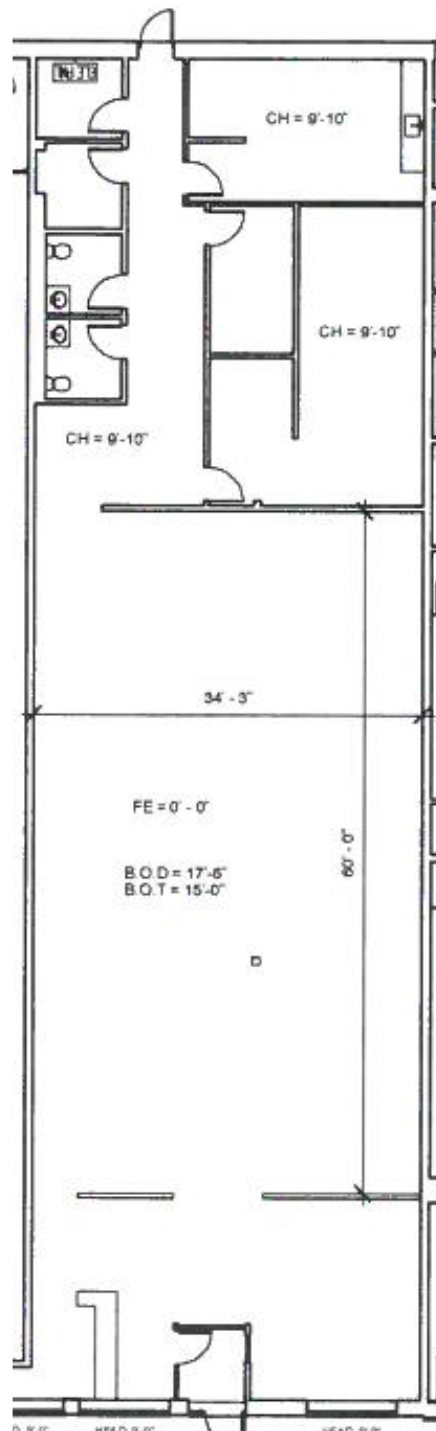
Exclusive Agent:

The Conrad Group, Inc.
Commercial Real Estate Services

Jim McEvoy
jhmcevoy@earthlink.net
Cell (781) 249-9225

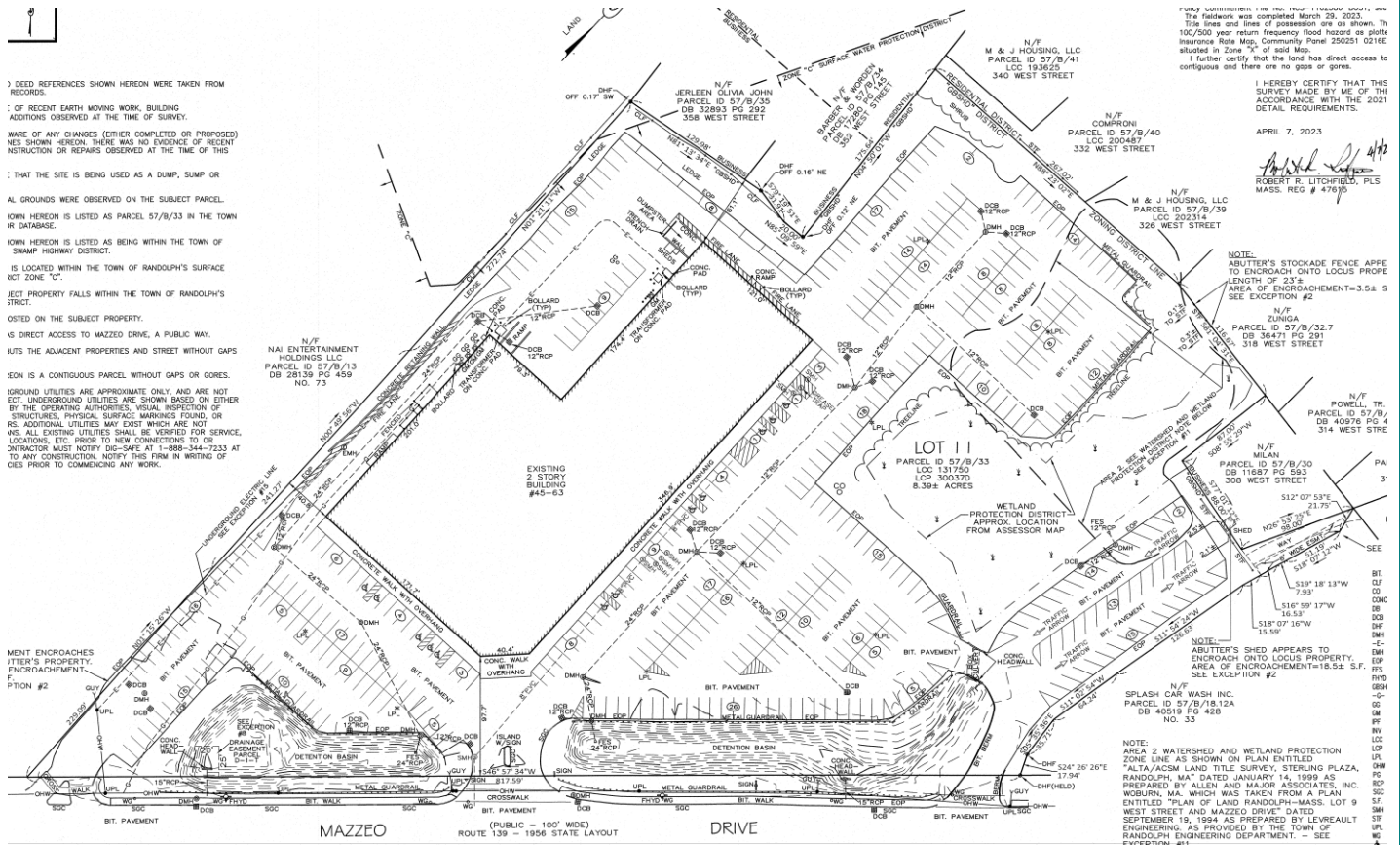
* All information is from sources deemed reliable however The Conrad Group makes no representation as to its accuracy

Unit Plan



The Conrad Group, Inc.
Commercial Real Estate Services

Site Plan



Contact:

Jim McEvoy
The Conrad Group, Inc.
(781) 249-9225
jhmcevoy@earthlink.net