



Cranbury Commons

Corner of Old Trenton Rd & South Main Street, Cranbury, New Jersey

Availability

- +/- 10,000 SF pad with drive-thru adjacent to mixed-use retail/residential development

Term

- Ground lease or build-to suit

Site Description

- New pad opportunity of up 10,000 SF with a drive-thru located at a traffic light controlled corner in the heart of Cranbury
- Free-standing pad located directly adjacent to a mixed-use development consisting of 70 residential units and 20,000 square feet of retail
- Tremendous incomes north of \$181,000 within the immediate area and a strong residential population surrounding the Cranbury market
- In addition to an existing heavy logistics and office presence, Cranbury is a growing retail market with additional residential and retail in-fill in development throughout the area
- Over 9,300 vehicles per day on Old Trenton Road and South Main Street

Demographics

Radius	Population	Daytime Population	Median HH Income
1 Mile	3,021	3,124	\$181,465
3 Mile	38,601	40,616	\$91,044
5 Mile	96,671	100,823	\$93,200
7 Mile	160,340	183,883	\$107,791

Retail for Lease - Contact

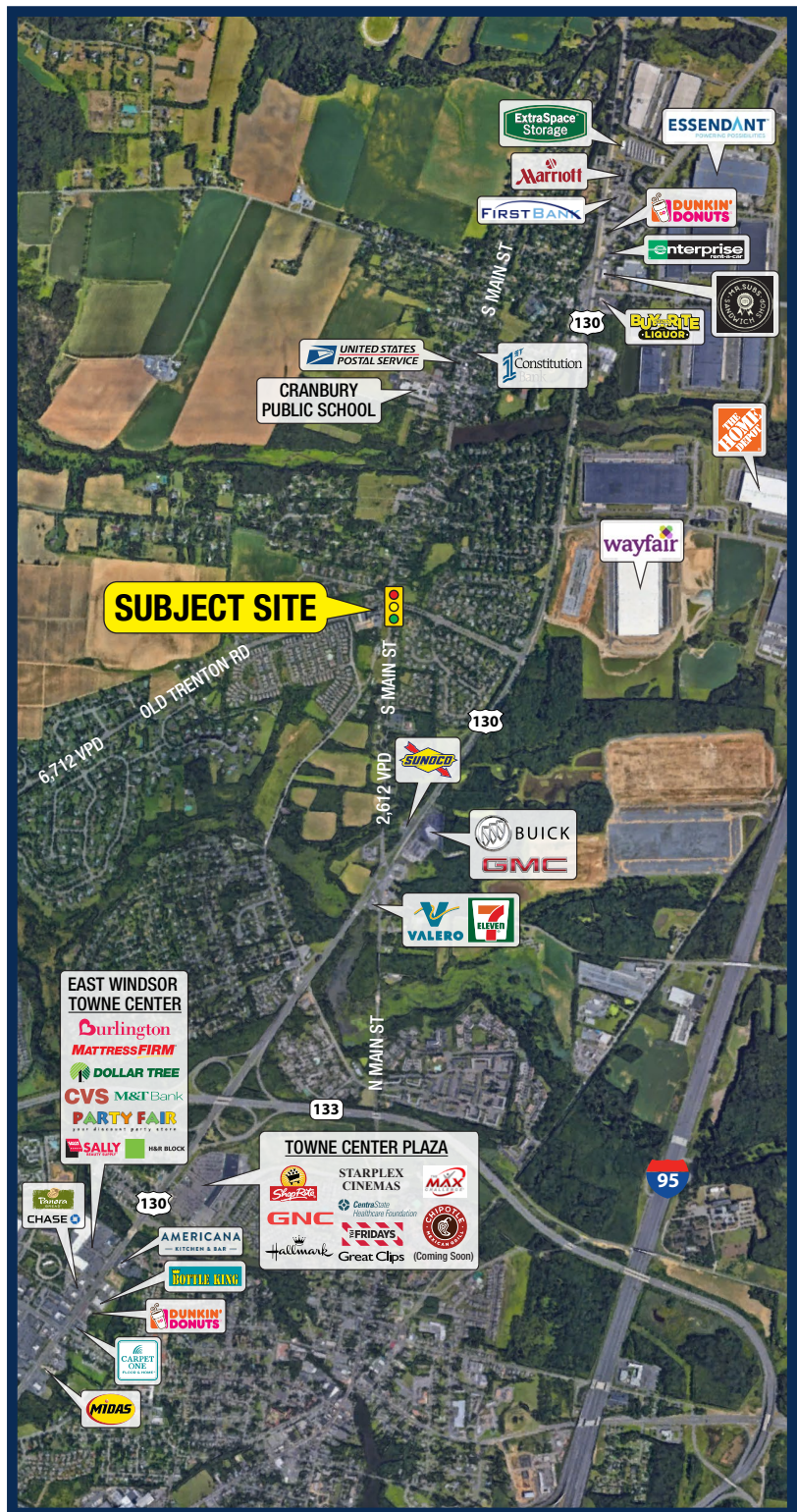
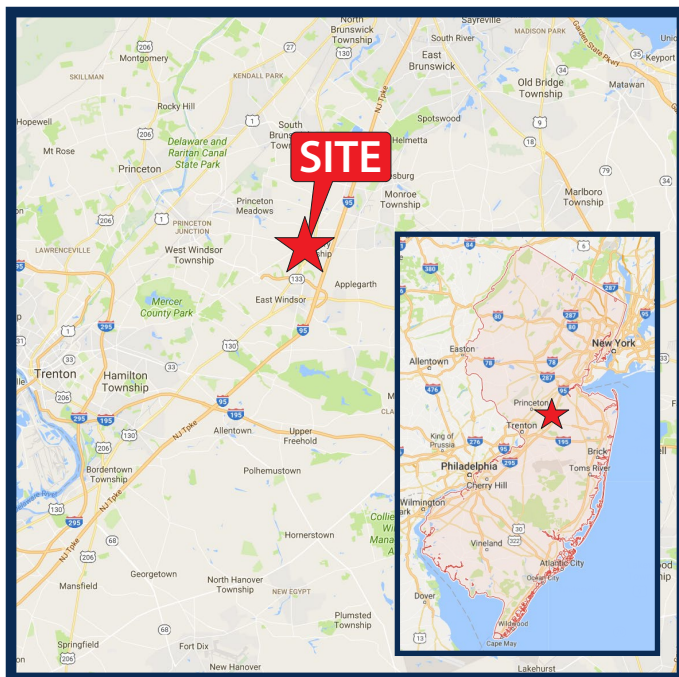
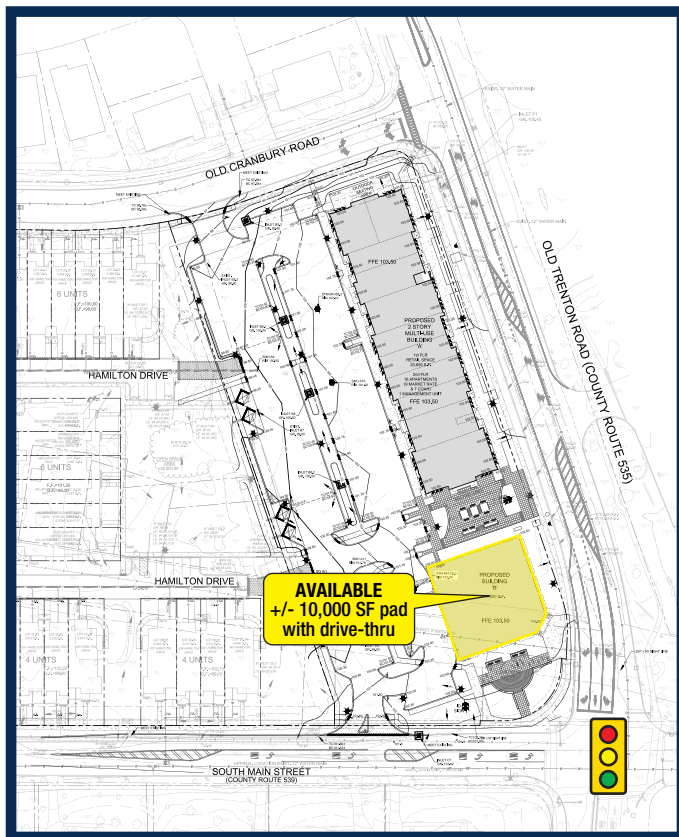
Jason Pierson
Ph. 732-707-6900 x1
jason@piersonre.com

Ryan Starkman
Ph. 732-707-6900 x5
ryan@piersonre.com

PIERSON
COMMERCIAL REAL ESTATE®

Cranbury Commons

Corner of Old Trenton Rd & South Main Street, Cranbury, New Jersey



Retail for Lease - Contact

Jason Pierson

Ph. 732-707-6900 x1

jason@piersonre.com

Ryan Starkman

Ph. 732-707-6900 x5

ryan@piersonre.com

PIERSON
COMMERCIAL REAL ESTATE.