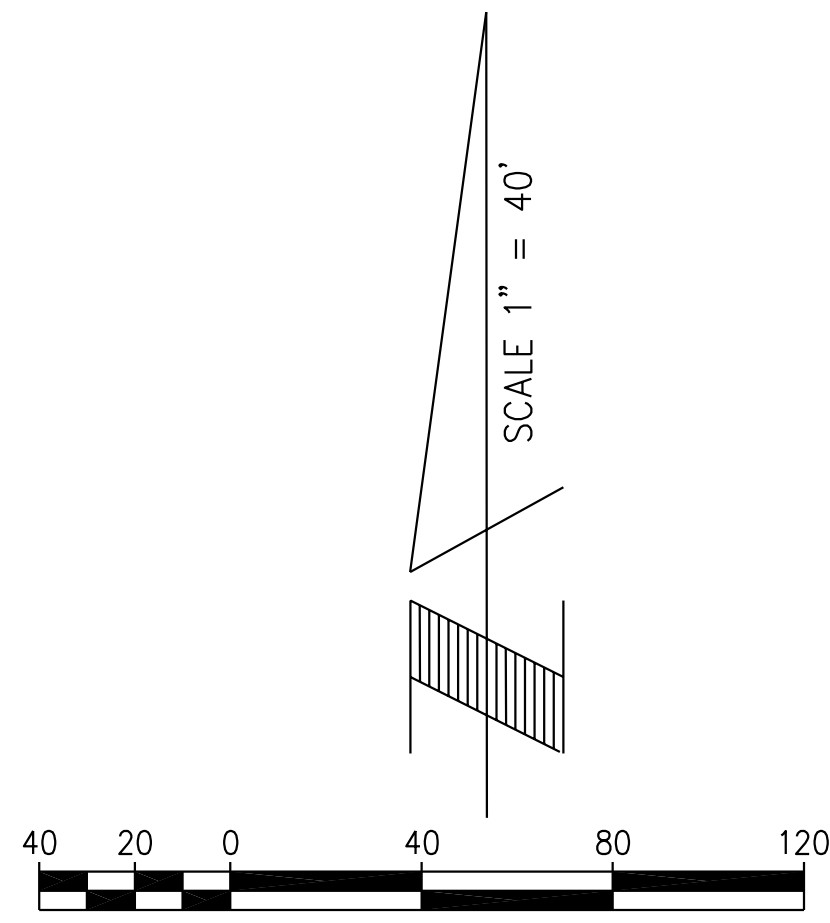
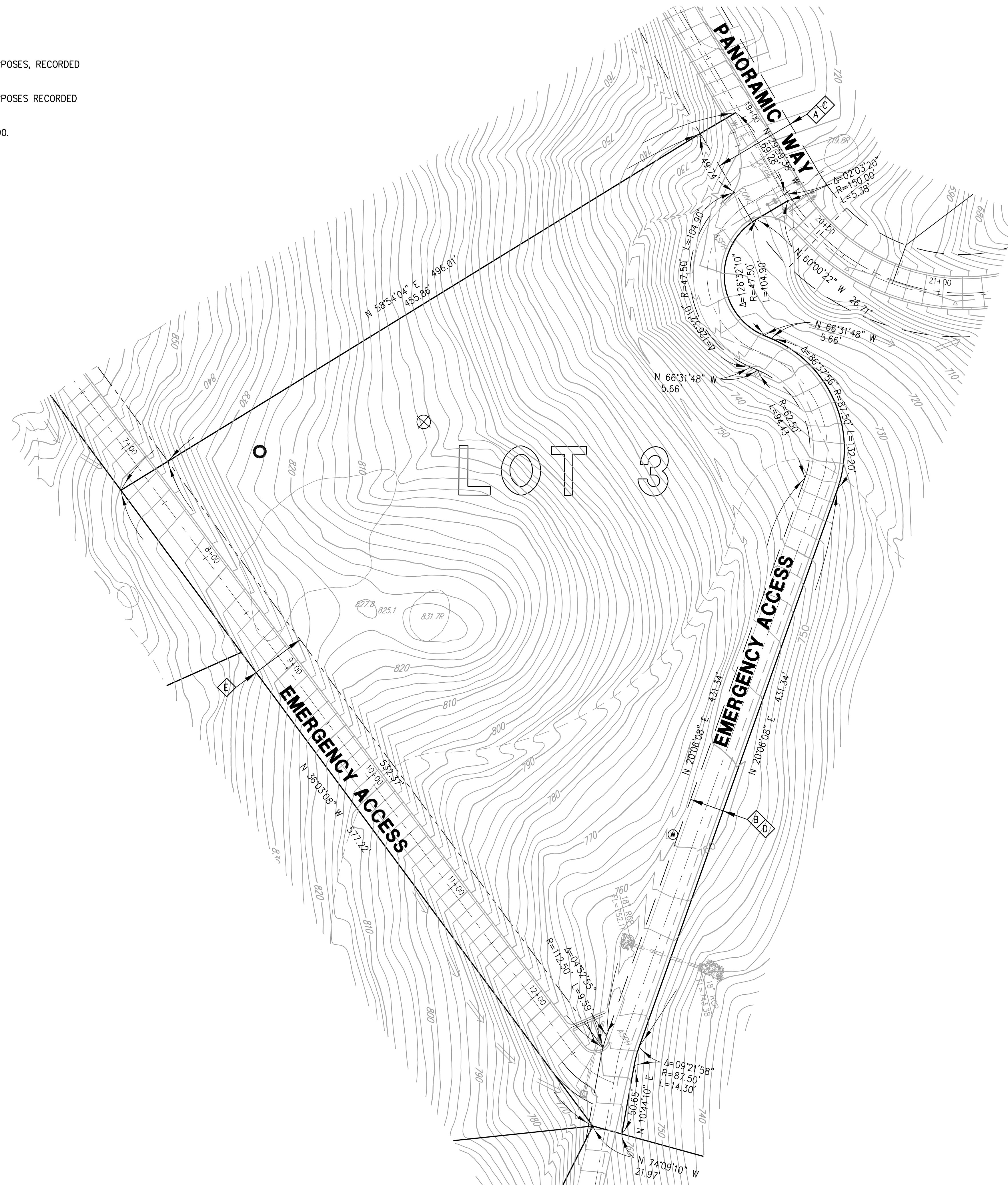


**EASEMENTS**

- Ⓐ 60' WIDE EASEMENT TO VALLECITOS WATER DISTRICT FOR PIPELINE PURPOSES, RECORDED SEPTEMBER 8, 1995, AS DOC # 1995-0399910 OF O.R.
- Ⓑ 25' WIDE EASEMENT TO VALLECITOS WATER DISTRICT FOR PIPELINE PURPOSES RECORDED SEPTEMBER 8, 1995, AS DOC # 1995-0399910 OF O.R.
- Ⓒ 60' WIDE PRIVATE ROAD AND PUBLIC UTILITY EASEMENT PER MAP 13390.
- Ⓓ 25' WIDE EMERGENCY ACCESS EASEMENT PER MAP 13930.
- Ⓔ 40' WIDE EMERGENCY ACCESS NEASEMENT PER MAP 13930.

**SOURCE OF TOPOGRAPHY**

ORIGINAL TOPOGRAPHY WAS PREPARED BY SAN-LO AERIAL PHOTOGRAMETRIS IN 1988 FOR STA ENGINEERING, INC. AND WAS SUPPLEMENTED BY FIELD SURVEY IN 1996 TO REFLECT WORK PERFORMED BY VALLECITOS WATER DISTRICT AND AGAIN MODIFIED TO REFLECT IMPROVEMENTS DESIGNED AND CONSTRUCTED AS PART OF THE PANORAMIC ESTATES DEVELOPMENT IN 2005.



**SEPTIC INFORMATION, 1982 DATA**  
 ○ APPROX. LOCATION TEST HOLE, 20 MIN/INCH  
 ⊗ APPROX. LOCATION DEEP HOLE  
 LOT ORIGINALLY APPROVED FOR 480 FEET FOR  
 FOR 3 BEDROOM RESIDENCE WITH 100% RESERVE  
 5' TRENCH WITH 3' OF GRAVEL

**AREA**  
 4.51 ACRES - GROSS  
 4.43 ACRES - NET

**ADDRESS**  
 2322 PANORAMIC WAY  
**ASSESSOR'S PARCEL NUMBER**  
 172-112-09

**LOT 3 PANORAMIC ESTATES**  
**MAP 13930, COUNTY OF SAN DIEGO**