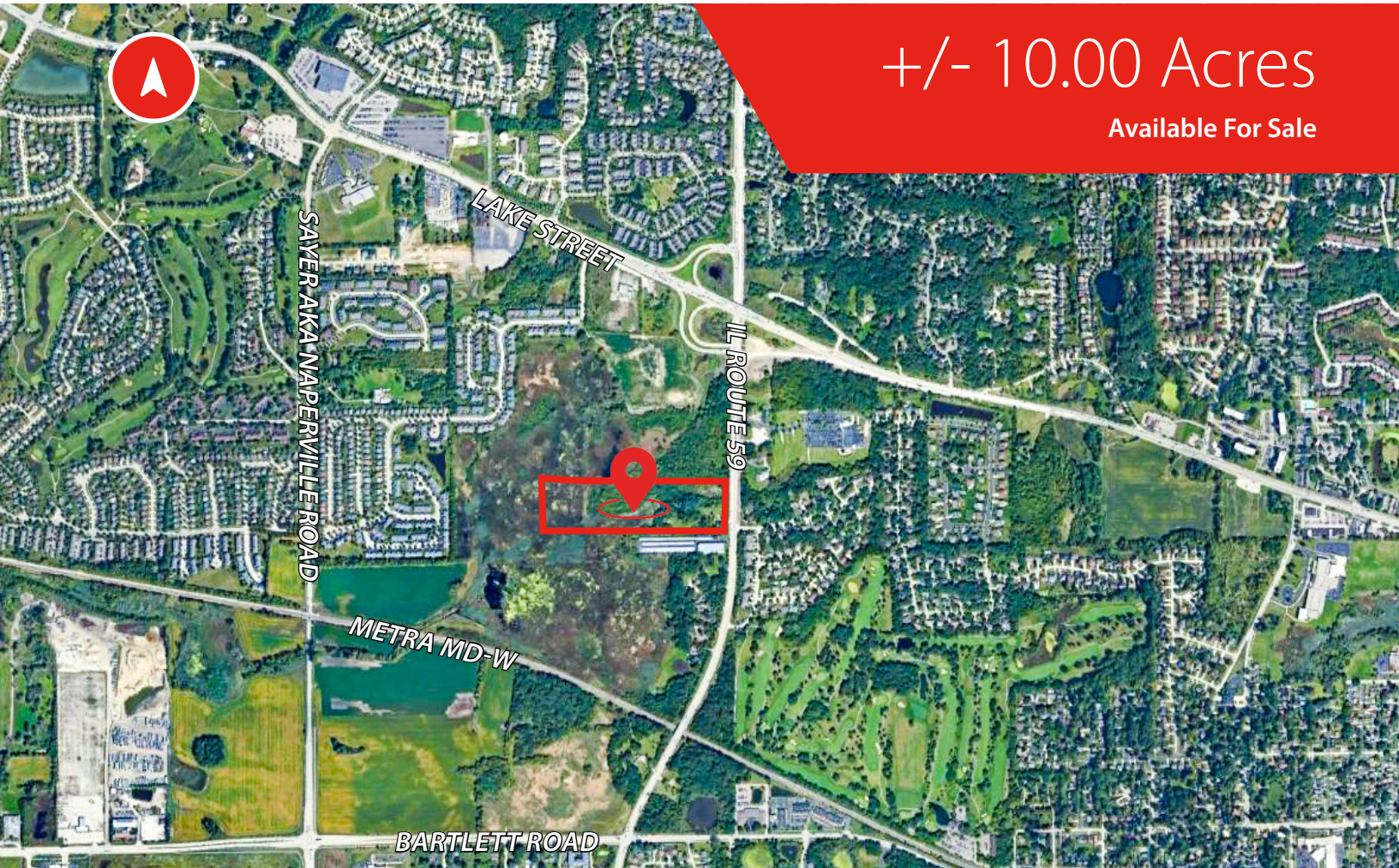


**+/- 10.00 Acres**

Available For Sale



**PROPERTY  
DETAILS**

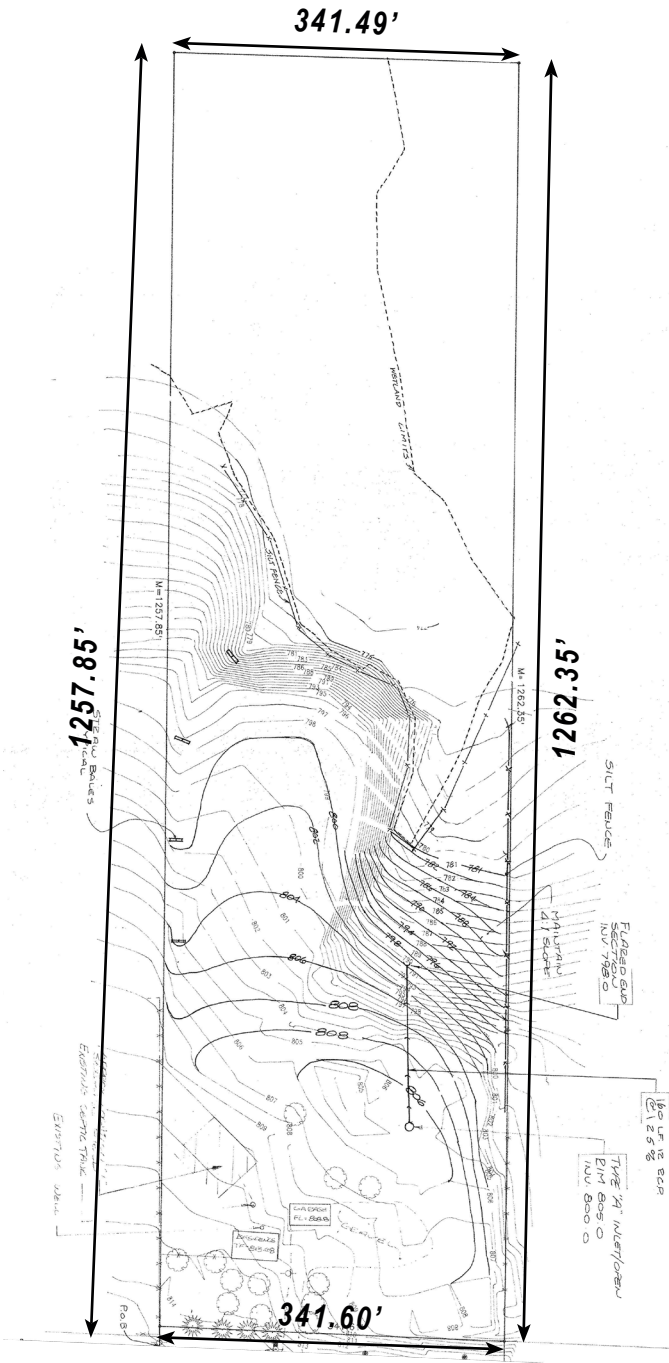
ACRES	± 10.00
USABLE ACRES	7.05
IL ROUTE 59 FRONTAGE	341.6'
POTENTIAL ZONING	COMMERCIAL USE
POTENTIAL ANNEXATION	BARTLETT
COUNTY	UNINCORPORATED COOK
2019 TAXES (PAID 2020)	\$10,005.04
PIN	06-28-401-003-0000
ASKING SALE PRICE	\$1,850,000

For more information,  
please contact:

Brian Colson  
Principal, Industrial Practice Group  
brian.colson@avisonyoung.com  
847.886.0228

Chris Lydon, SIOR  
Principal, Industrial Practice Group  
chris.lydon@avisonyoung.com  
847.232.8610

# 161 IL ROUTE 59 | UNINCORPORATED COOK SURVEY



**HIGH**  
VISIBILITY  
LOCATION

**341'**  
FRONTAGE ALONG  
IL ROUTE 59

**216,647**  
TOTAL POPULATION  
2019: 5 MILE RADIUS

**36,200 VPD ALONG IL ROUTE 59**

For more information,  
please contact:

Brian Colson  
Principal, Industrial Practice Group  
brian.colson@avisonyoung.com  
847.886.0228

Chris Lydon, SIOR  
Principal, Industrial Practice Group  
chris.lydon@avisonyoung.com  
847.232.8610

**\$107,045**  
AVERAGE HH INCOME  
2019: 5 MILE RADIUS