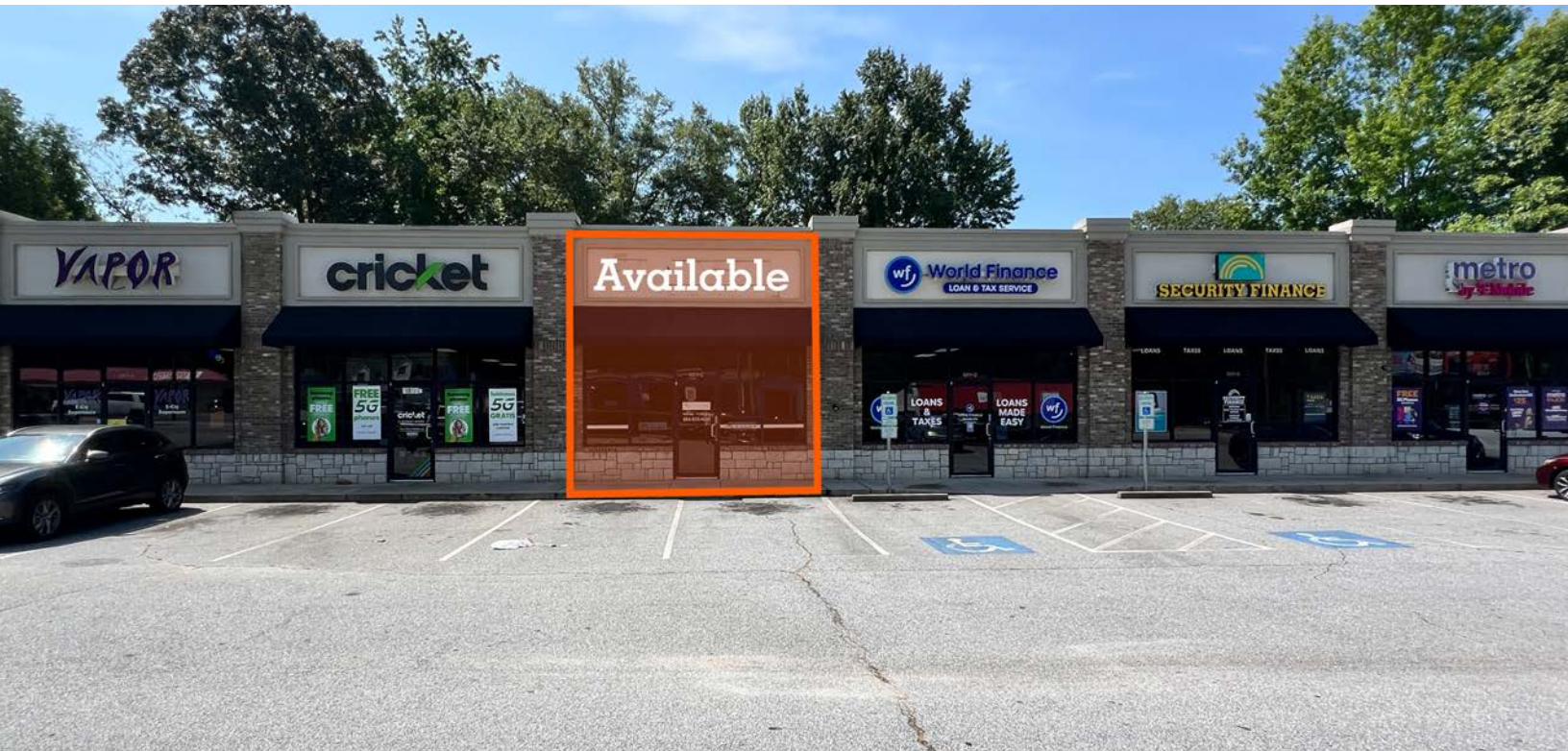


# Retail property for lease

Brookwood Center  
6811 Calhoun Memorial Hwy  
Easley, SC 29640



## One space remaining at Brookwood Center

- Located in the heart of Easley's retail trade area
- Outstanding visibility on Highway 123
- Traffic count: 38,200 VPD
- Strategically located near Publix, Home Depot, O'Reilly Auto Parts, and Dollar Tree
- 35 parking spaces

### Get more information

**James McKay, Vice President**  
864. 448. 0628  
[james.mckay@avisonyoung.com](mailto:james.mckay@avisonyoung.com)

Spaces	Lease Rate	Type	Space Size	Pass Throughs
Unit C	\$15 SF/YR	NNN	1,200 SF	\$2.95/SF/YR



# Retail property for lease

6811 Calhoun Memorial Hwy



**AVISON  
YOUNG**

**James McKay, Vice President**  
864. 448. 0628  
[james.mckay@avisonyoung.com](mailto:james.mckay@avisonyoung.com)

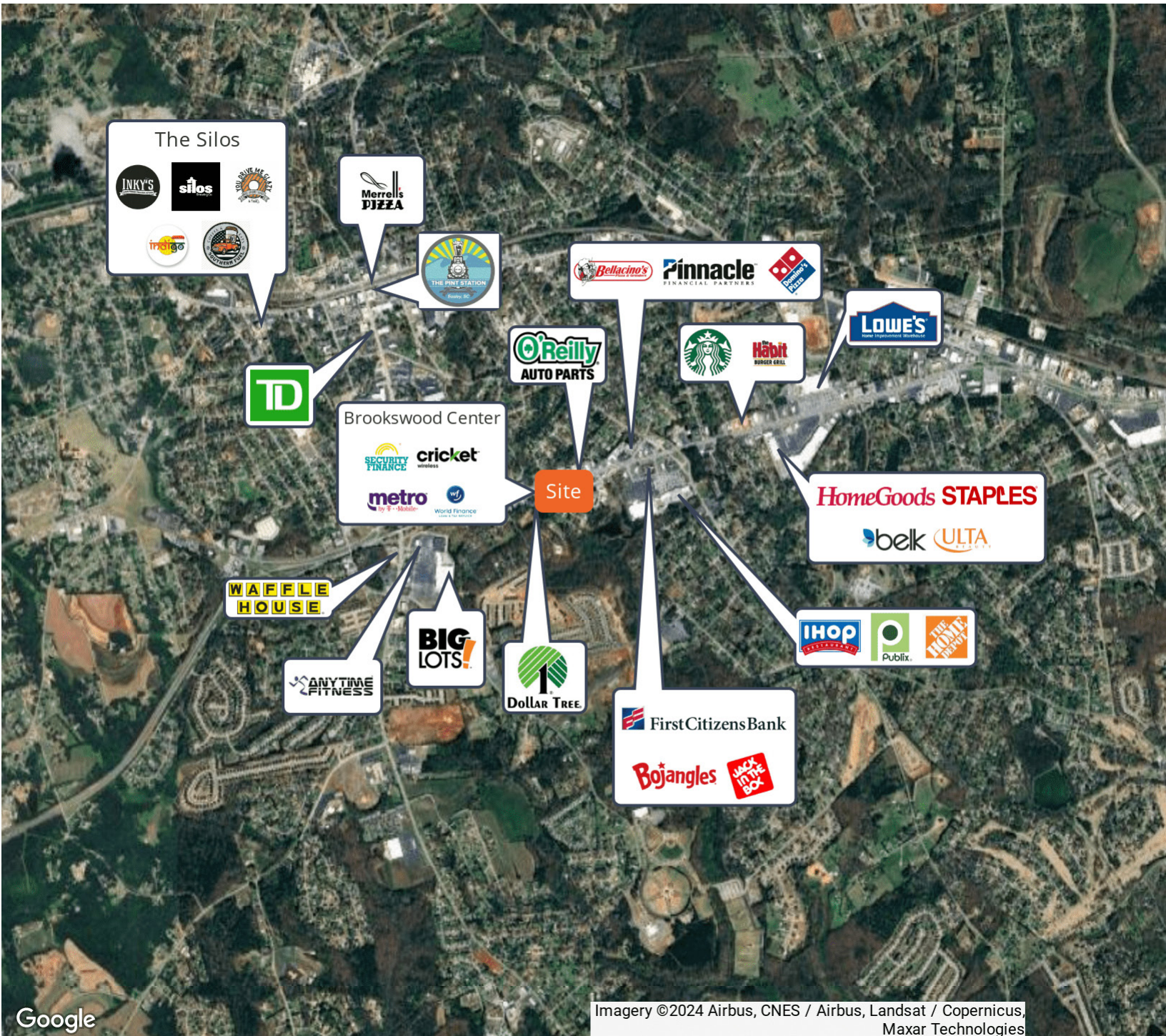
Avison Young - Greenville | 656 S Main Street, Suite 200 | Greenville, SC 29601 | 864 334 4145

© 2024. Avison Young - Greenville. Information contained herein was obtained from sources deemed reliable and, while thought to be correct, have not been verified. Avison Young - Greenville does not guarantee the accuracy or completeness of the information presented, nor assumes any responsibility or liability for any errors or omissions therein.



# Retail property for lease

6811 Calhoun Memorial Hwy



**AVISON  
YOUNG**

**James McKay, Vice President**  
864. 448. 0628  
james.mckay@avisonyoung.com

Avison Young - Greenville | 656 S Main Street, Suite 200 | Greenville, SC 29601 | 864 334 4145

© 2025. Avison Young - Greenville. Information contained herein was obtained from sources deemed reliable and, while thought to be correct, have not been verified. Avison Young - Greenville does not guarantee the accuracy or completeness of the information presented, nor assumes any responsibility or liability for any errors or omissions therein.