



Trailside Shoppes

3709 Gentian Boulevard
Columbus, Georgia 31907

Property Highlights

- All leases are NNN
- Spacious and accommodating layouts
- Close to Manchester Expressway, Columbus State University, and Peachtree Mall

Property Overview

3709 Gentian Boulevard is a prime commercial property with spaces available for lease in Columbus, GA. This modern space boasts a spacious layout accommodating a range of business needs, from retail to office use. With ample parking and high visibility, it offers an ideal location for attracting traffic and customers.

Offering Summary

| | |
|-----------------------|---------------------------------------|
| Lease Rate: | \$3,000.00 - 3,800.00 per month (NNN) |
| Building Size: | +/- 20,363 SF |
| Available SF: | +/- 2,500 - 3,000 SF |
| Lot Size: | +/- 1.74 Acres |

Demographics 0.3 Miles 0.5 Miles 1 Mile

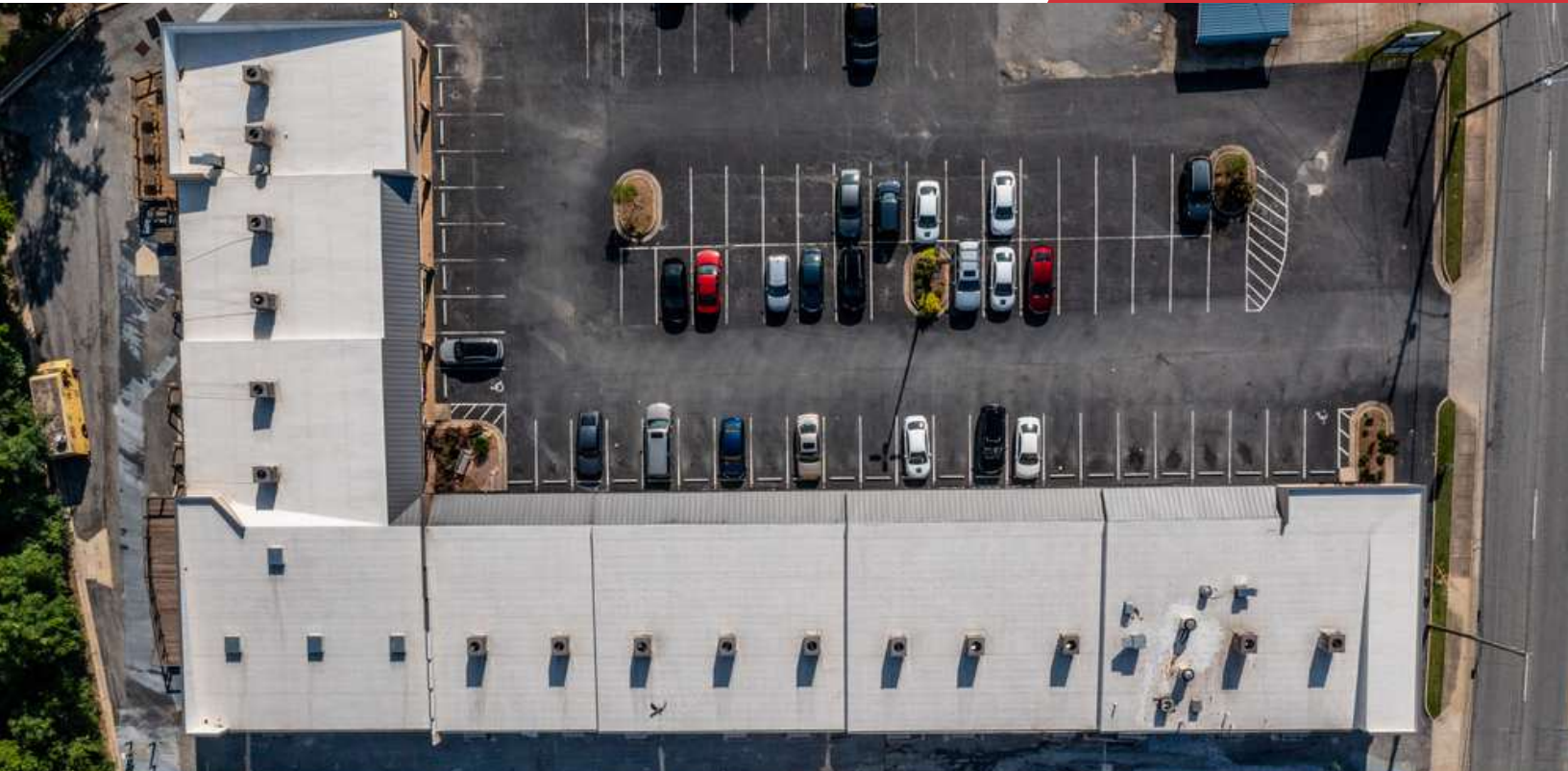
| | 0.3 Miles | 0.5 Miles | 1 Mile |
|--------------------------|-----------|-----------|----------|
| Total Households | 267 | 663 | 2,597 |
| Total Population | 532 | 1,452 | 6,462 |
| Average HH Income | \$63,202 | \$69,766 | \$78,746 |

For More Information

Amy D. Gill, MICP, MRP

O: 706 660 5418 x1009

agill@g2cre.com | GA #381793



Lease Information

| | | | |
|---------------------|----------------------|--------------------|-----------------------------------|
| Lease Type: | NNN | Lease Term: | Negotiable |
| Total Space: | +/- 2,500 - 3,000 SF | Lease Rate: | \$3,000.00 - \$3,800.00 per month |

Available Spaces

| Suite | Tenant Size (SF) | Lease Type | Lease Rate | Description |
|-----------|-----------------------|------------|-------------------|--|
| Suite 1/2 | Available 2,500 SF | NNN | \$3,800 per month | This +/- 2,500 SF space, previously used as a pizza restaurant, is available for lease for \$3,800 per month with a NNN lease. The space features dining areas, prep areas, and almost all equipment pictured. |
| Suite 5 | Available 3,000 SF | NNN | \$12.00 SF/yr | Suite 5 features a reception area, three classrooms, two private offices, and restrooms. This +/- 3,000 SF space is well-maintained and has LVP flooring throughout. Space leases for \$12/SF/year plus CAM charges with a NNN lease. Space will be available March 1, 2025. |

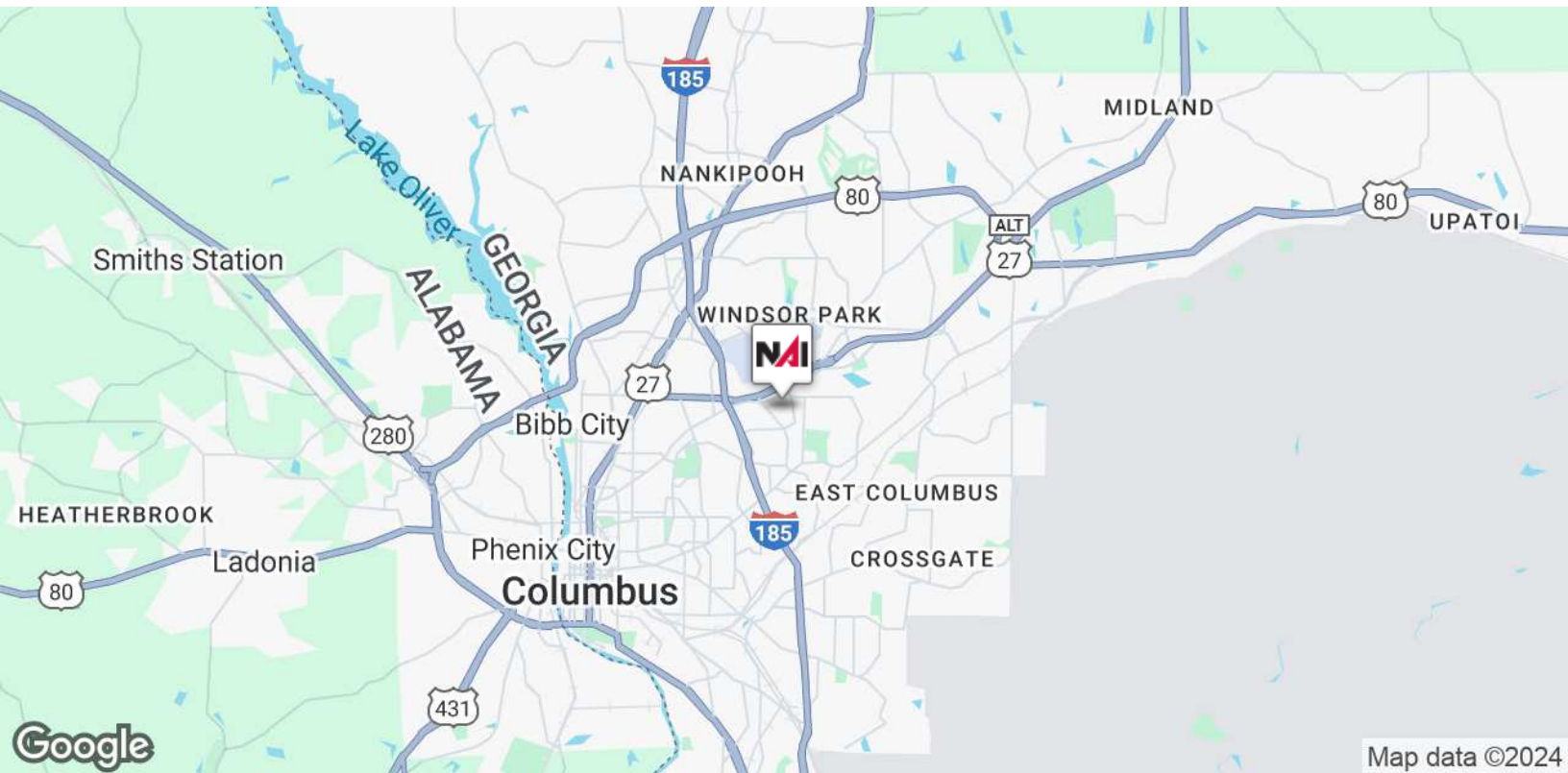
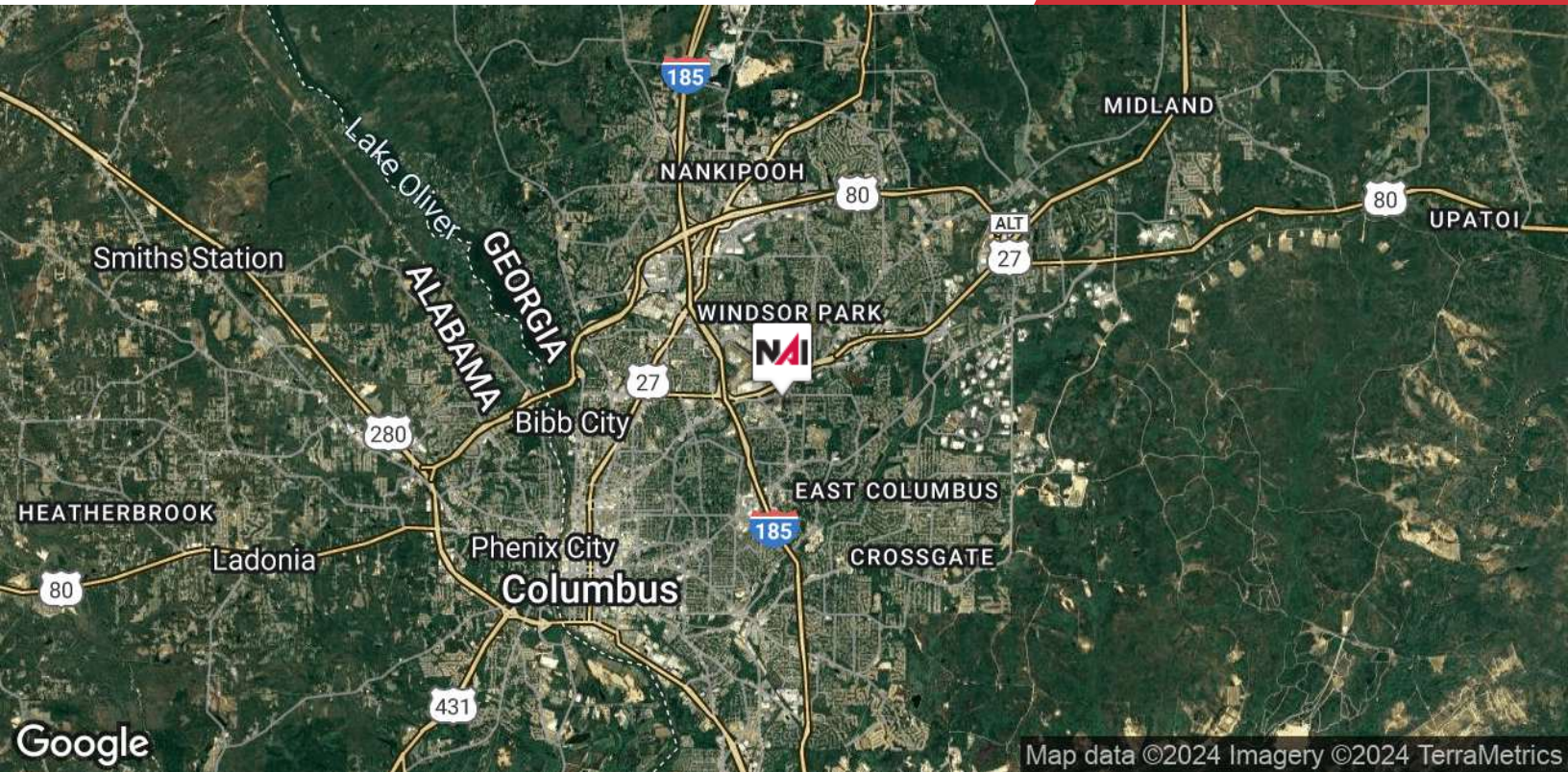
We obtained the information above from sources we believe to be reliable. However, we have not verified its accuracy and make no guarantee, warranty or representation about it. It is submitted subject to the possibility of errors, omissions, change of price, rental or other conditions, prior sale, lease or financing, or withdrawal without notice. We include projections, opinions, assumptions or estimates for example only, and they may not represent current or future performance of the property. You and your tax and legal advisors should conduct your own investigation of the property and transaction.



Map data ©2024 Imagery ©2024 Airbus, Landsat / Copernicus, Maxar Technologies, U.S. Geological Survey

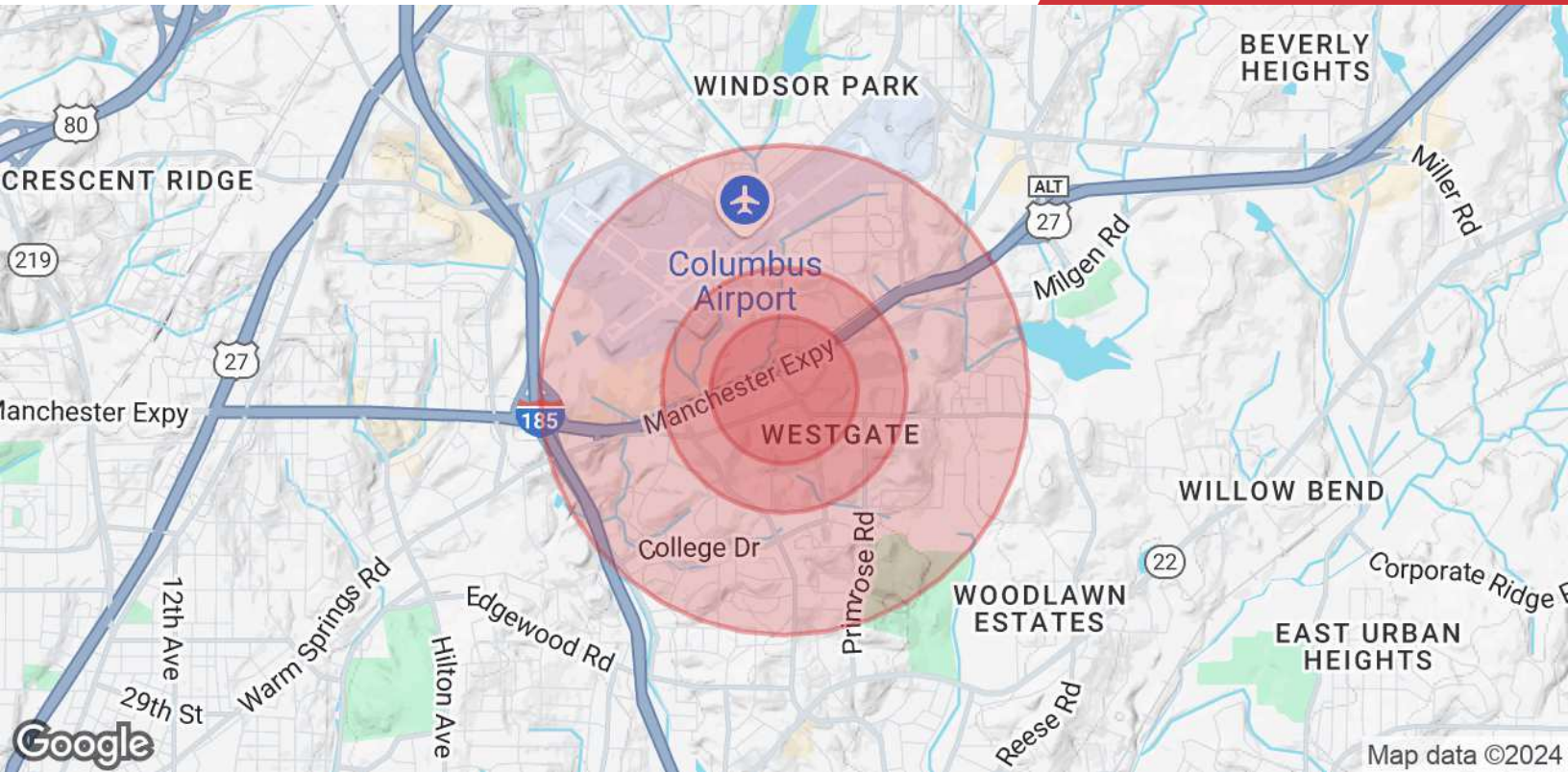
We obtained the information above from sources we believe to be reliable. However, we have not verified its accuracy and make no guarantee, warranty or representation about it. It is submitted subject to the possibility of errors, omissions, change of price, rental or other conditions, prior sale, lease or financing, or withdrawal without notice. We include projections, opinions, assumptions or estimates for example only, and they may not represent current or future performance of the property. You and your tax and legal advisors should conduct your own investigation of the property and transaction.

Post Office Box 4529
Columbus, GA 31904
706 660 5418 tel
G2cre.com



We obtained the information above from sources we believe to be reliable. However, we have not verified its accuracy and make no guarantee, warranty or representation about it. It is submitted subject to the possibility of errors, omissions, change of price, rental or other conditions, prior sale, lease or financing, or withdrawal without notice. We include projections, opinions, assumptions or estimates for example only, and they may not represent current or future performance of the property. You and your tax and legal advisors should conduct your own investigation of the property and transaction.

Post Office Box 4529
Columbus, GA 31904
706 660 5418 tel
G2cre.com



| Population | 0.3 Miles | 0.5 Miles | 1 Mile |
|-----------------------------|-----------|-----------|-----------|
| Total Population | 532 | 1,452 | 6,462 |
| Average Age | 39 | 37 | 36 |
| Average Age (Male) | 38 | 36 | 35 |
| Average Age (Female) | 41 | 39 | 37 |
| Households & Income | 0.3 Miles | 0.5 Miles | 1 Mile |
| Total Households | 267 | 663 | 2,597 |
| # of Persons per HH | 2 | 2.2 | 2.5 |
| Average HH Income | \$63,202 | \$69,766 | \$78,746 |
| Average House Value | \$290,361 | \$266,473 | \$238,240 |

Demographics data derived from AlphaMap

We obtained the information above from sources we believe to be reliable. However, we have not verified its accuracy and make no guarantee, warranty or representation about it. It is submitted subject to the possibility of errors, omissions, change of price, rental or other conditions, prior sale, lease or financing, or withdrawal without notice. We include projections, opinions, assumptions or estimates for example only, and they may not represent current or future performance of the property. You and your tax and legal advisors should conduct your own investigation of the property and transaction.