

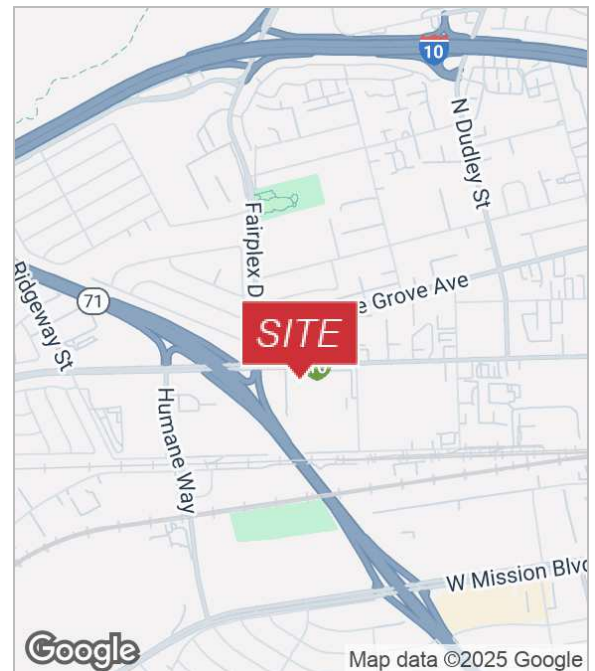


1986 W Holt Ave

Pomona, California 91768

Sale Highlights

- Industrial Business Park Environment
- Secured Property With Motorized Gate
- Holt Avenue Frontage
- 400 Amps of Power
- Easy Access to 71, 10, 57, & 60 Freeways



For more information

Arvin Poblete

O: 949.607.8402

apoblete@naicapital.com | CalDRE #01944364

Stephen Lim

O: 626.539.3797

slim@naicapital.com | CalDRE #01276633

No warranty, express or implied, is made as to the accuracy of the information contained herein. This information is submitted subject to errors, omissions, change of price, rental or other conditions, withdrawal without notice, and is subject to any special listing conditions imposed by our principals. Cooperating brokers, buyers, tenants and other parties who receive this document should not rely on it, but should use it as a starting point of analysis, and should independently confirm the accuracy of the information contained herein through a due diligence review of the books, records, files and documents that constitute reliable sources of the information described herein. Logos are for identification purposes only and may be trademarks of their respective companies. NAI Capital Commercial, Inc. CAL DRE Lic. #02130474

NAI Capital

21660 East Copley Dr. #320

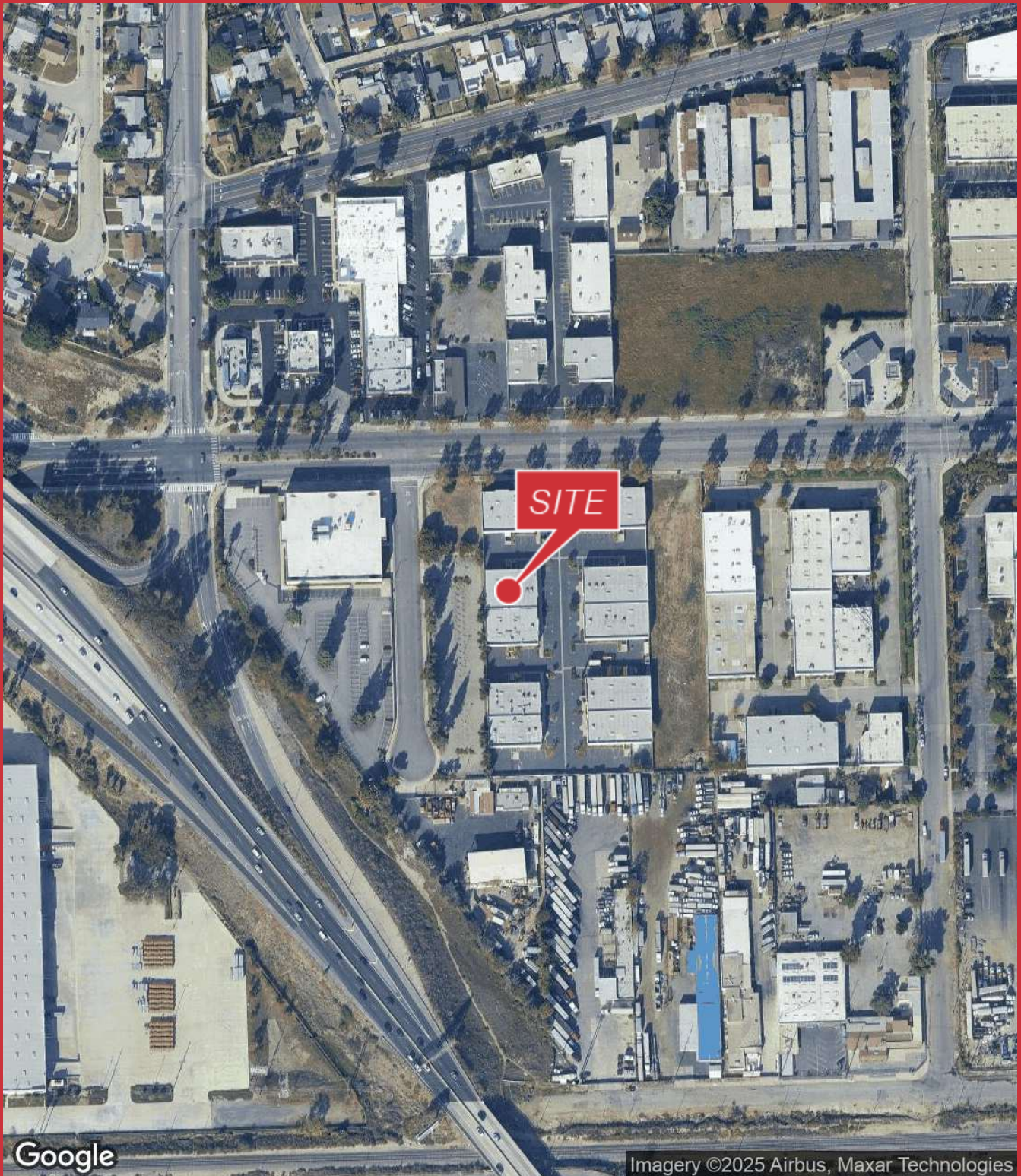
Diamond Bar, CA 91765

909.348.0600

naicapital.com

For Sale

1986 W Holt Ave, Pomona



Arvin Poblete

949.607.8402

apoblete@naicapital.com

CalDRE #01944364

Stephen Lim

626.539.3797

slim@naicapital.com

CalDRE #01276633

NAICapital
COMMERCIAL REAL ESTATE SERVICES, WORLDWIDE