

# UPDATED PROFESSIONAL OFFICE SUITE IN THE HEART OF FISHERSVILLE

1563 Jefferson Highway Suite 102, Fishersville, VA 22939

---



### OFFERING SUMMARY

Available SF: 1,800 SF

Lease Rate: \$17.50 SF/yr (Gross)

MLS#: 678585

### PROPERTY OVERVIEW

Updated 1,800 sq ft professional office suite, ideally situated in the heart of Fishersville. This versatile space has large offices, making it a perfect fit for medical professionals, counselors, accountants, or other uses. Clients are greeted by a welcoming, spacious lobby area that sets a highly professional tone. The layout features four generous individual offices designed to provide the quiet environment needed for focused work or confidential consultations. For comfort and convenience, the property includes two fully compliant handicap-accessible bathrooms. Tenants will also benefit from a kitchen and break area, along with on-site laundry facilities, which is a rare and highly convenient perk for medical practices or busy teams. Move-in ready with ample parking, pylon signage, and great visibility. Rate includes all CAM fees, and water! Move in available now!

*For More Information:*

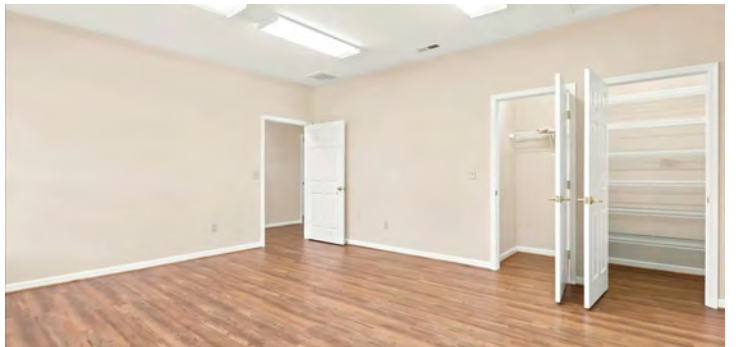
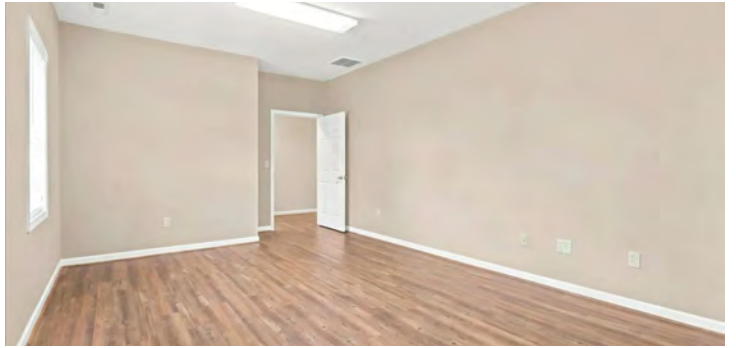
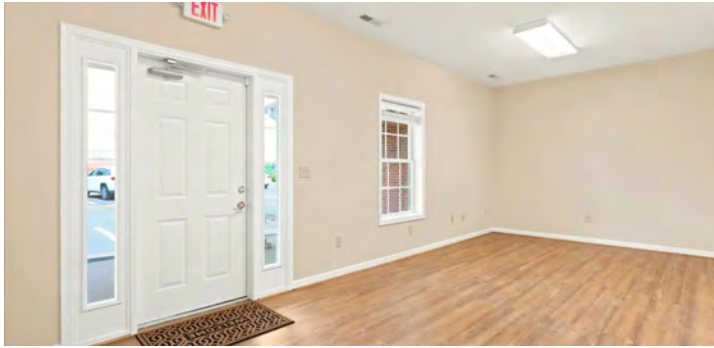
**Craig Anders**  
540.383.6054  
craig.anders@cottonwood.com

**COTTONWOOD**  
**COMMERCIAL**  
A COMMERCIAL REAL ESTATE BROKERAGE

## Additional Photos

# UPDATED PROFESSIONAL OFFICE SUITE IN THE HEART OF FISHERSVILLE

1563 Jefferson Highway Suite 102, Fishersville, VA 22939



For More Information:

Craig Anders

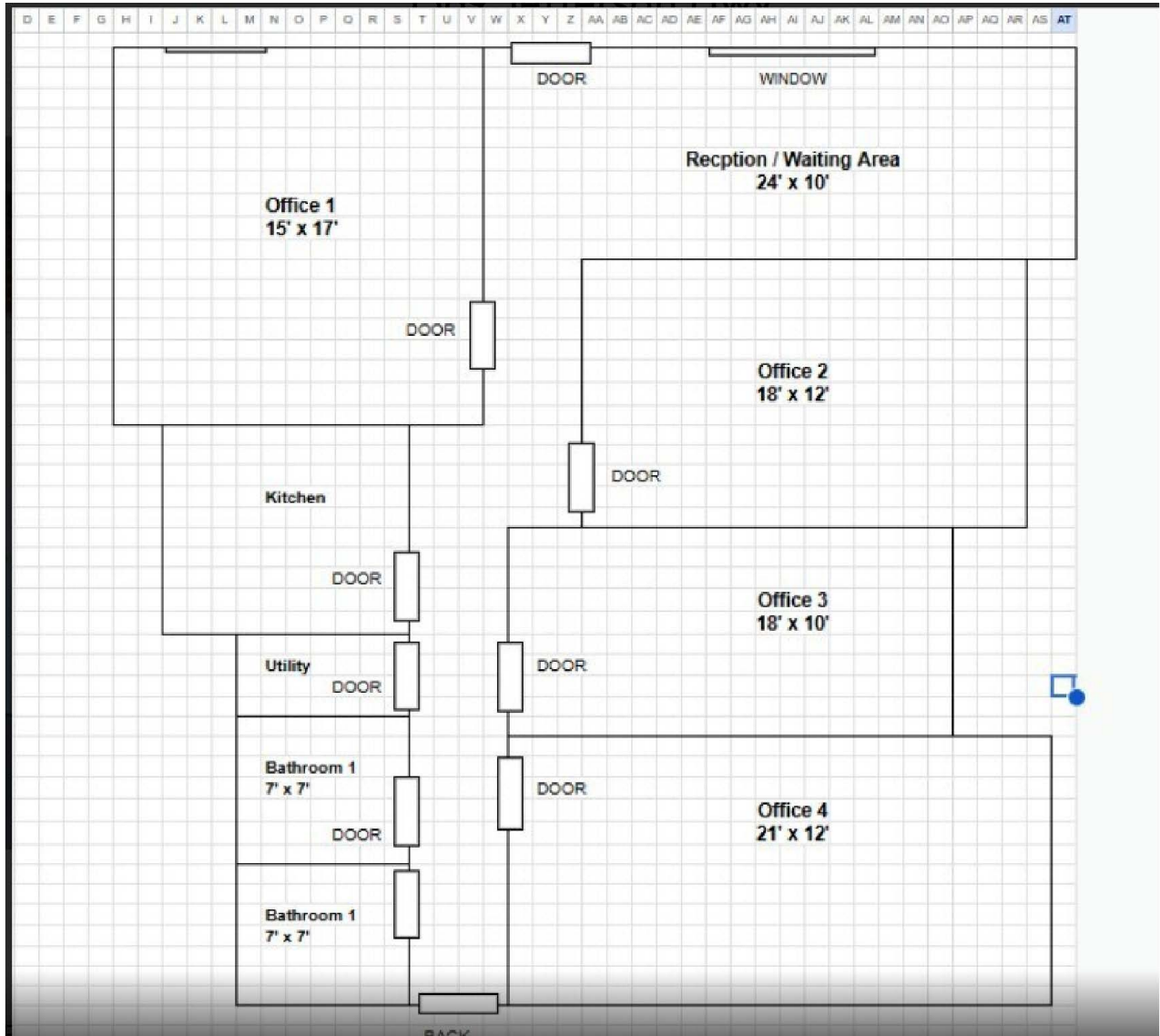
540.383.6054

[craig.anders@cottonwood.com](mailto:craig.anders@cottonwood.com)

**COTTONWOOD**  
**COMMERCIAL**  
A COMMERCIAL REAL ESTATE BROKERAGE

We obtained the information above from sources we believe to be reliable. However, we have not verified its accuracy and make no guarantee, warranty or representation about it. It is submitted subject to the possibility of errors, omissions, change of price, rental or other conditions, prior sale, lease or financing, or withdrawal without notice. We include projections, opinions, assumptions or estimates for example only, and they may not represent current or future performance of the property. You and your tax and legal advisors should conduct your own investigation of the property and transaction.

**UPDATED PROFESSIONAL OFFICE SUITE IN THE HEART OF FISHERSVILLE**  
1563 Jefferson Highway Suite 102, Fishersville, VA 22939



For More Information:

Craig Anders

540.383.6054

[craig.anders@cottonwood.com](mailto:craig.anders@cottonwood.com)

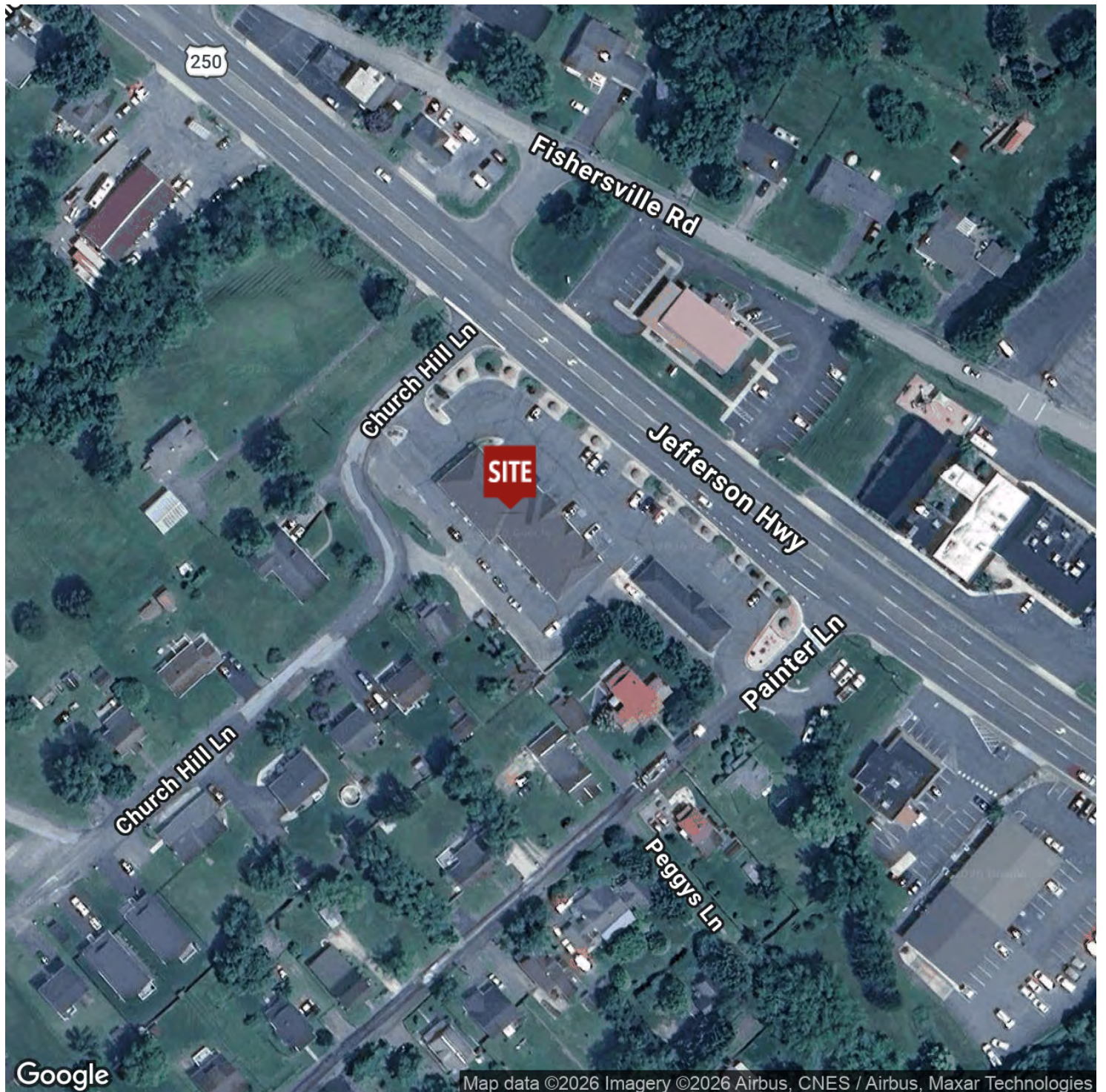
**COTTONWOOD**  
**COMMERCIAL**  
A COMMERCIAL REAL ESTATE BROKERAGE

We obtained the information above from sources we believe to be reliable. However, we have not verified its accuracy and make no guarantee, warranty or representation about it. It is submitted subject to the possibility of errors, omissions, change of price, rental or other conditions, prior sale, lease or financing, or withdrawal without notice. We include projections, opinions, assumptions or estimates for example only, and they may not represent current or future performance of the property. You and your tax and legal advisors should conduct your own investigation of the property and transaction.

## Location Map

# UPDATED PROFESSIONAL OFFICE SUITE IN THE HEART OF FISHERSVILLE

1563 Jefferson Highway Suite 102, Fishersville, VA 22939



For More Information:

Craig Anders

540.383.6054

[craig.anders@cottonwood.com](mailto:craig.anders@cottonwood.com)

**COTTONWOOD**  
COMMERCIAL  
A COMMERCIAL REAL ESTATE BROKERAGE

We obtained the information above from sources we believe to be reliable. However, we have not verified its accuracy and make no guarantee, warranty or representation about it. It is submitted subject to the possibility of errors, omissions, change of price, rental or other conditions, prior sale, lease or financing, or withdrawal without notice. We include projections, opinions, assumptions or estimates for example only, and they may not represent current or future performance of the property. You and your tax and legal advisors should conduct your own investigation of the property and transaction.