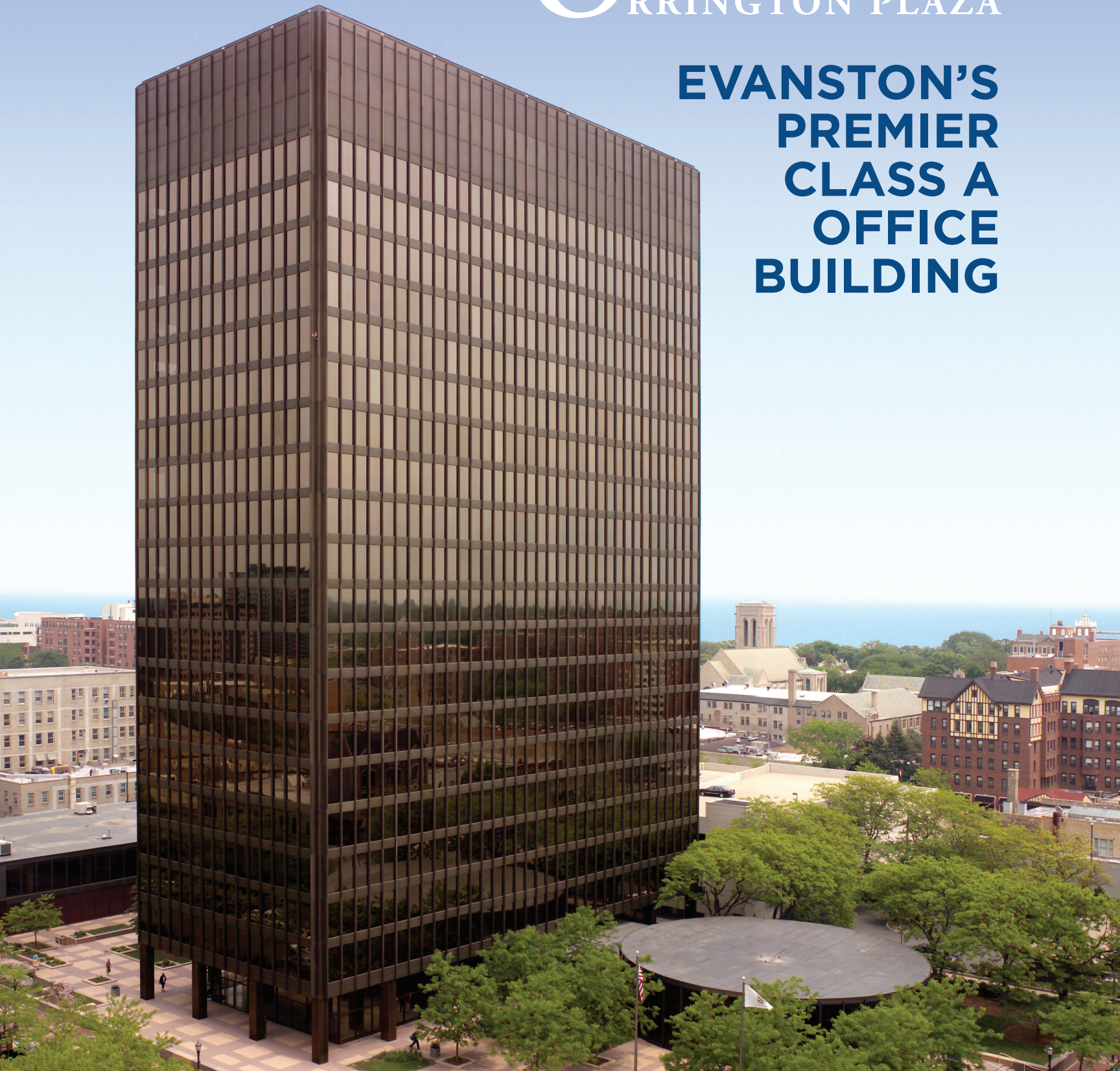




ORRINGTON PLAZA

**EVANSTON'S
PREMIER
CLASS A
OFFICE
BUILDING**



FOR LEASING INFORMATION:

Steve Degodny
312.593.5991
steve.degodny@transwestern.com

Joe Stevens
847.840.8743
joe.stevens@transwestern.com

1603 Orrington
Evanston, Illinois
orringtonplaza.com

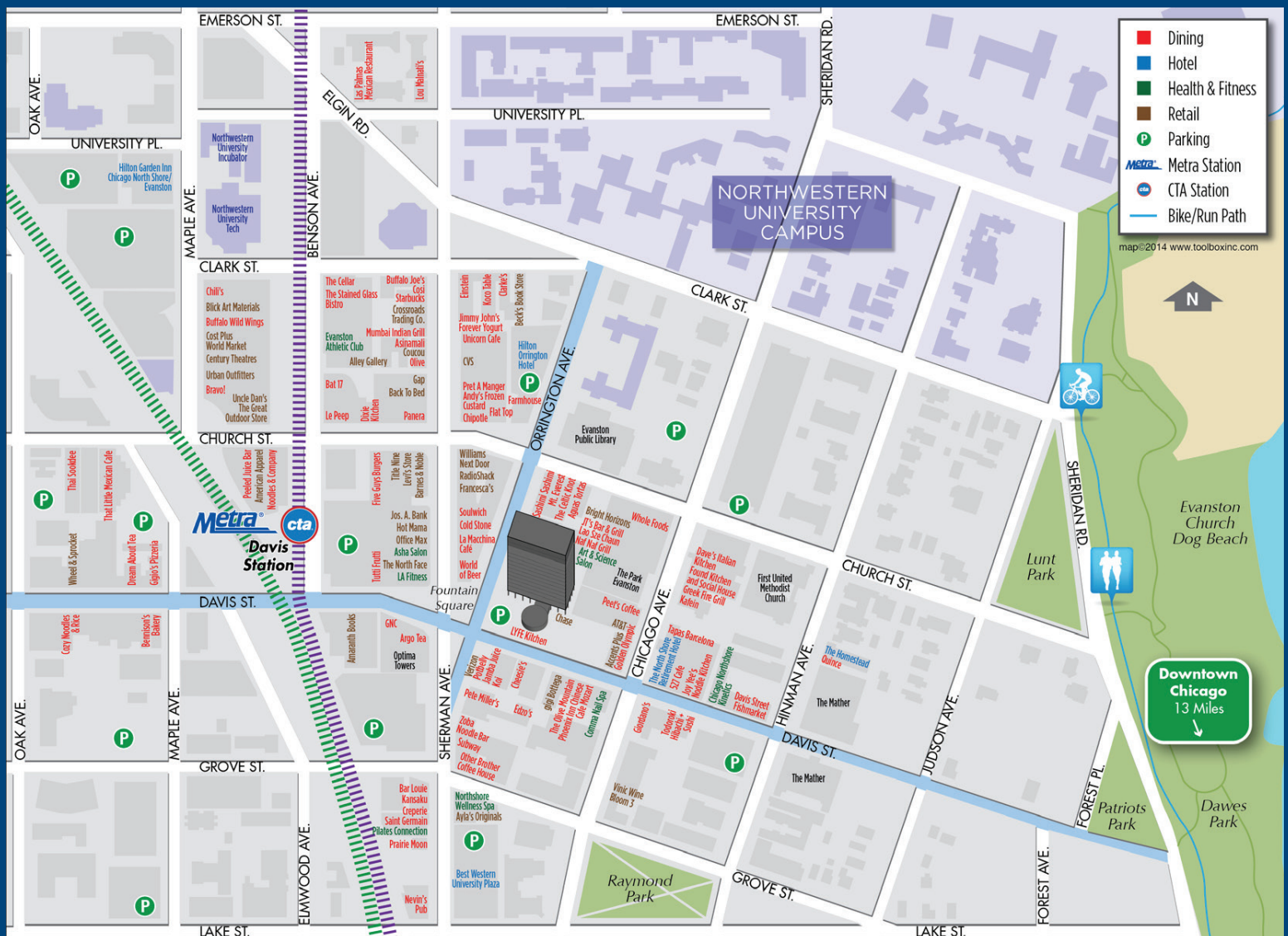


EVANSTON'S TALLEST BUILDING

Towering over downtown Evanston and its neighboring North Shore communities, Orrington Plaza is prominently located in the heart of Evanston's Central Business District and has long been a landmark on the Evanston skyline. Located one block from CTA's Purple Line, Metra Station and amidst a plethora of restaurants and retail, Orrington Plaza provides tenants unsurpassed convenience, accessibility and spectacular views of the Chicago skyline and Lake Michigan.

LOCATION

The City of Evanston provides an outstanding combination of access and proximity to all downtown Chicago in addition to all the amenities associated with a location directly along Lake Michigan. Evanston's diversity, cultural amenities, transit-oriented nature, and commercial infrastructure combine to create one of the most unique and highly desirable "24/7" environments to live, work, and play within the greater Metropolitan Chicago's area.



AMENITIES & PROPERTY FEATURES



LOCATED IN THE HEART OF
DOWNTOWN EVANSTON



FULL SERVICE CHASE BANK
BRANCH IN LOBBY



24-HOUR LOBBY
PERSONNEL



BRIGHT HORIZONS
DAYCARE



LE TOUR RESTAURANT &
DOS BROS FRESH MEXICAN GRILL



ART & SCIENCE
HAIR SALON



ON-SITE PROPERTY
MANAGEMENT



BIKE ROOM



SECURE, HEATED, PARKING
GARAGE

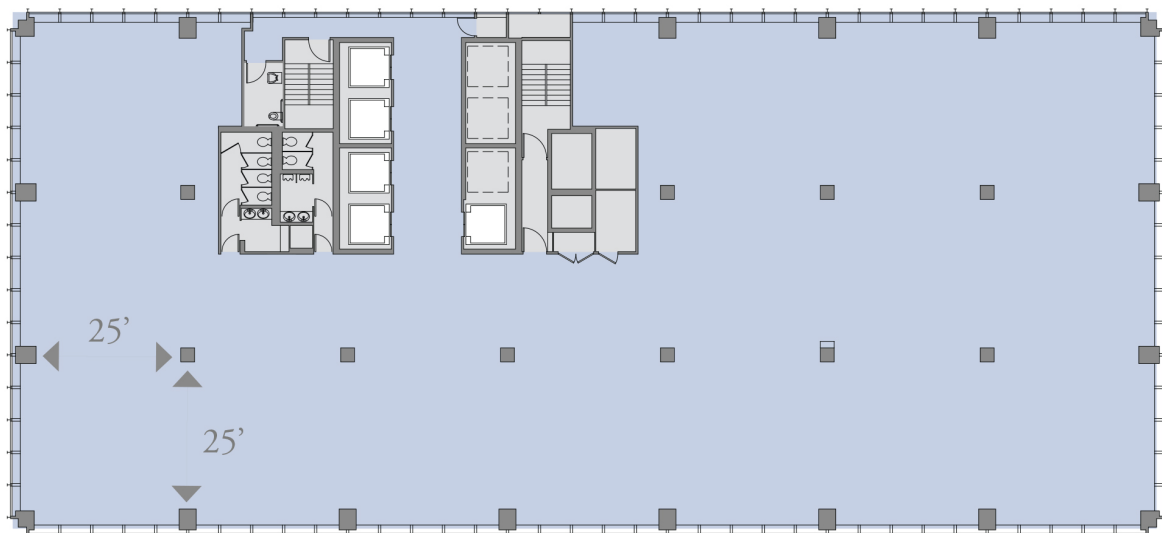


SPECTACULAR VIEWS



FLEXIBLE FLOORPLATE

Orrington Plaza offers a flexible, 14,000 SF floorplate that make planning opportunities easier. Offset core and building areas also provides efficient five foot planning with 25' x 25' bay sizes.





HARRINGTON PLAZA

Steve Degodny
312.593.5991
steve.degodny@transwestern.com

Joe Stevens
847.840.8743
joe.stevens@transwestern.com