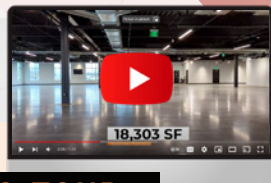




Accelerating success.

# CENTRE POINTE

1891 W. 2100 S.  
Salt Lake City, UT 84119



**VIDEO TOUR**

**Chris Kirk, Sior**  
Managing Director  
+1 801 947 8385  
chris.kirk@colliers.com

**Colliers**  
111 S. Main St., Suite 2200  
Salt Lake City, UT 84111  
Main: +1 801 947 8300  
colliers.com



# PROPERTY FEATURES

- 32,244 SF Available
- Fully Furnished, Plug & Play
- Shared Dock Access
- Freight Elevator
- 1,200 Amps of 277/480v Power
- Panel Capacity for Additional 2,400 Amps
- Clear Height to Accommodate Lab Configuration
- Oversized Gas & Sewer Lines
- Priority Electric Vehicle Parking/Charging Stations
- Class A Office Finishes and Common Areas
- Fitness Center





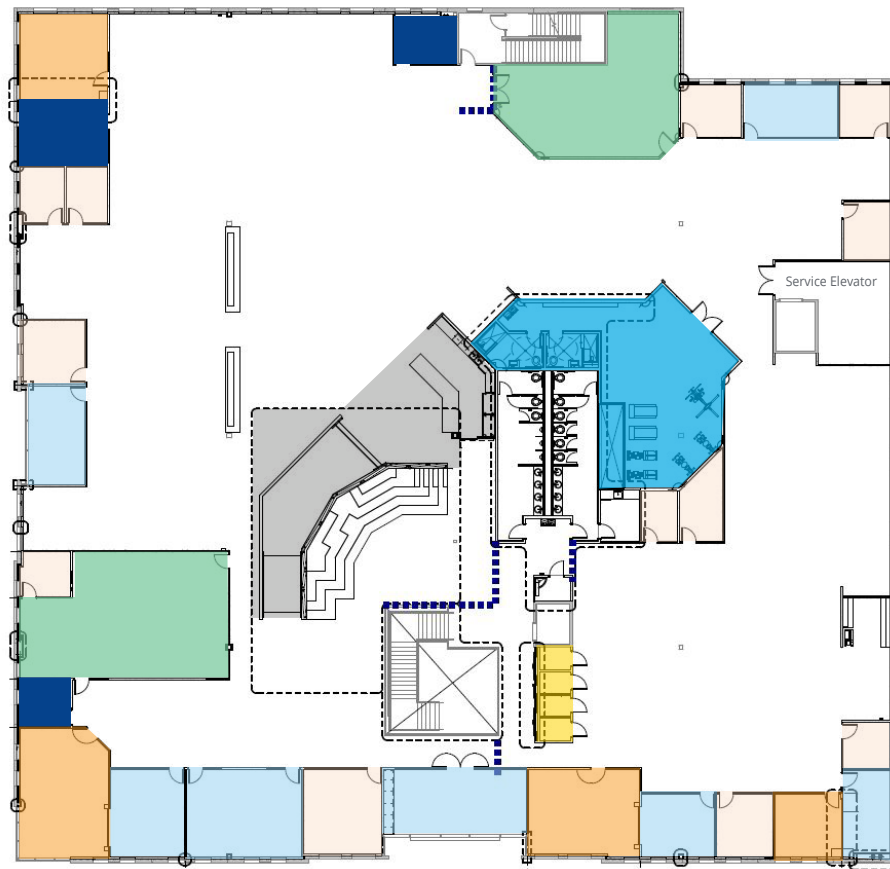
# SPACE CRAFTED FOR **SYNERGY** & **INNOVATION**

## FLOOR 2

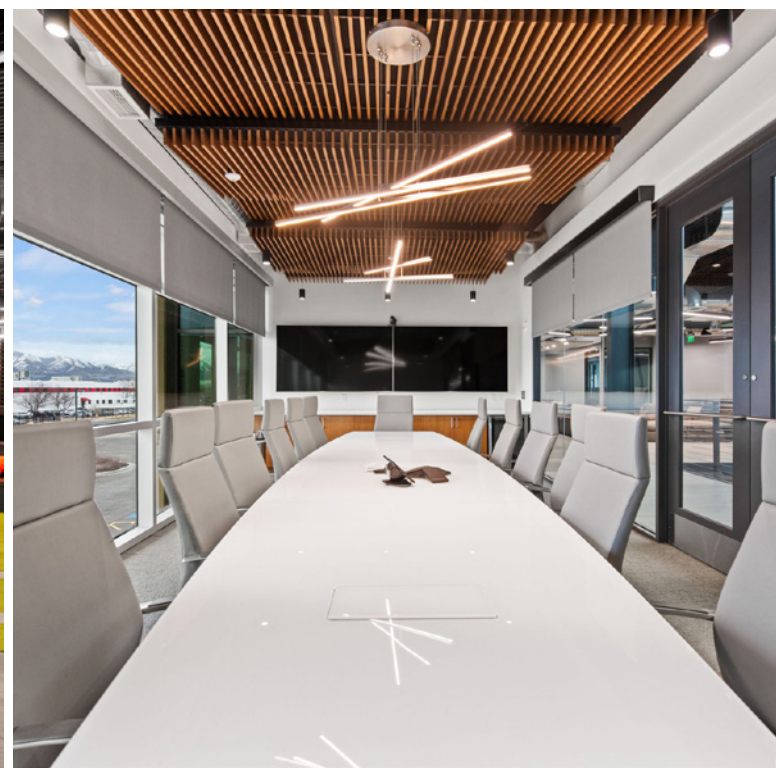
**32,244 SF**  
**AVAILABLE NOW**

Fully Furnished Office  
Plug & Play

- Executive Offices | 4
- Private Offices | 9
- Conference Rooms | 7
- Call Rooms | 4
- Fitness Center
- Training Rooms | 2
- Break Room



















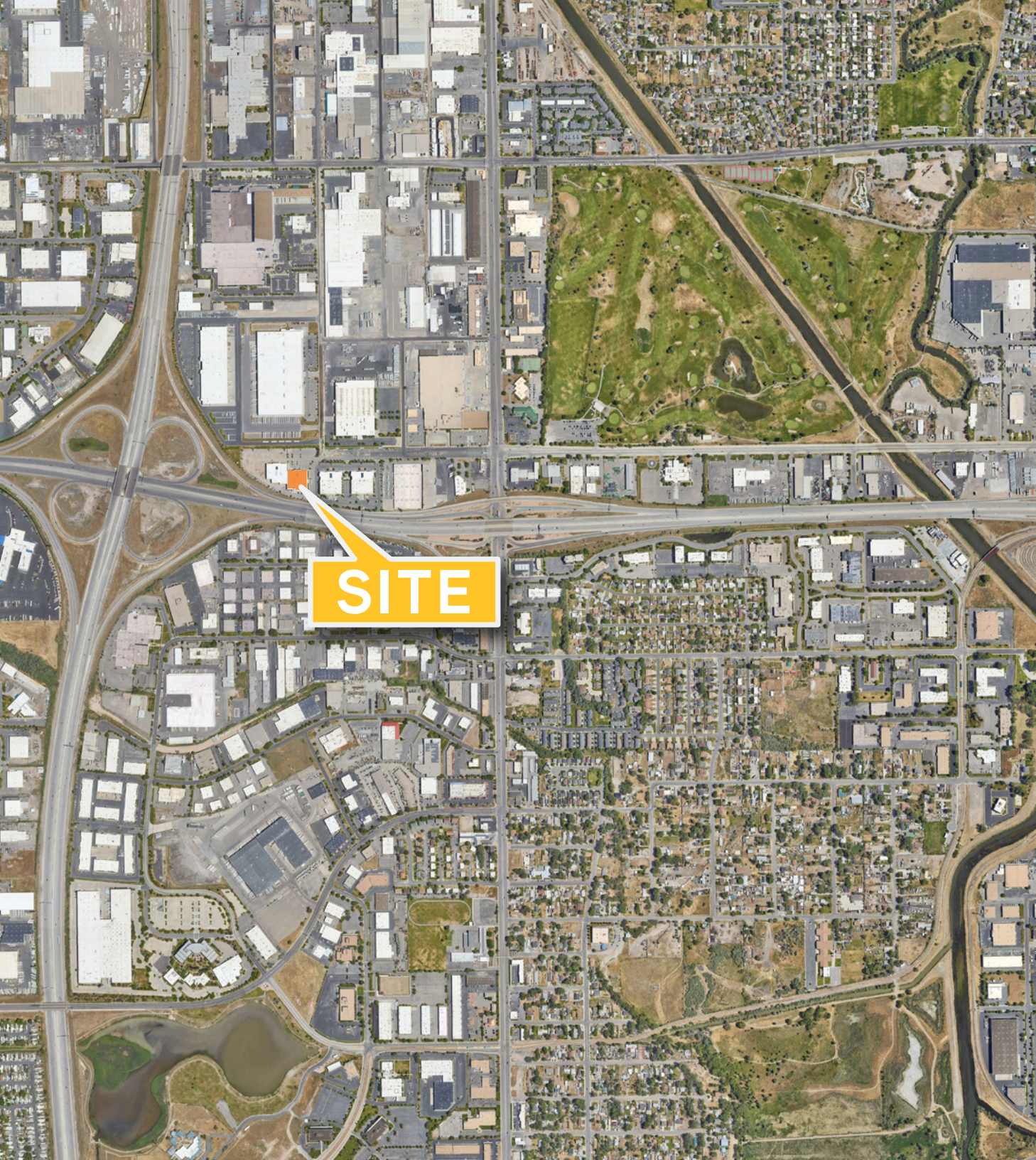












# LOCATION

- Excellent central access to all of Salt Lake County and the Wasatch Front
- 3 minutes to I-215
- 10 minutes to Salt Lake City International Airport
- 15 minutes to the University of Utah
- 16 minutes to Bountiful
- 25 minutes to the Point of the Mountain tech corridor
- Surrounded by a variety of restaurants and amenities



# SALT LAKE CITY

## CONNECTED TO THE WORLD



### 91 Direct Flight Destinations

- 11 International Direct Flights
- 80 Domestic Direct Flights
- Served by 12 Major Airlines

Getting here is a snap, thanks to easy access by road, rail and air. (They don't call Salt Lake the "Crossroads of the West" for nothing.) Salt Lake City International Airport is just 10 minutes from downtown. And Delta Airlines, official partner of Visit Salt Lake, flies nonstop to Salt Lake from over 100 cities.

• 10 minutes to Downtown

• 17 minutes to University of Utah

• 30 minutes to Utah Olympic Park & Park City Area

• 40 minutes to Ski Resorts







# CENTRE POINTE

1865-1895 W. 2100 S.

Salt Lake City, UT 84119

**Chris Kirk, sior**  
Managing Director  
+1 801 947 8385  
chris.kirk@colliers.com



**Colliers**

111 S. Main St., Suite 2200

Salt Lake City, UT 84111

Main: +1 801 947 8300

colliers.com

This document has been prepared by Colliers International for advertising and general information only. Colliers International makes no guarantees, representations or warranties of any kind, expressed or implied, regarding the information including, but not limited to, warranties of content, accuracy and reliability. Any interested party should undertake their own inquiries as to the accuracy of the information. Colliers International excludes unequivocally all inferred or implied terms, conditions and warranties arising out of this document and excludes all liability for loss and damages arising there from. This publication is the copyrighted property of Colliers International and/or its licensor(s). ©2024. All rights reserved.