



DEVELOPMENT SITE FOR SALE

13615 Blue Lick Rd

Memphis, IN 47143 (Clark County)



45.61

Acres Available

1,200 FT

Interstate Frontage

AG

Zoning

PROPERTY OVERVIEW

 **45.61 ACRES**

Land Available

 **±1200 FT**

Interstate Frontage (I-65)

 **±650 FT**

Road Frontage (Hwy 31)

 **4,881 (AADT, 2025)**

Hwy 31 Traffic Count

 **47,395 (AADT, 2025)**

I-65 Traffic Count

 **AG**

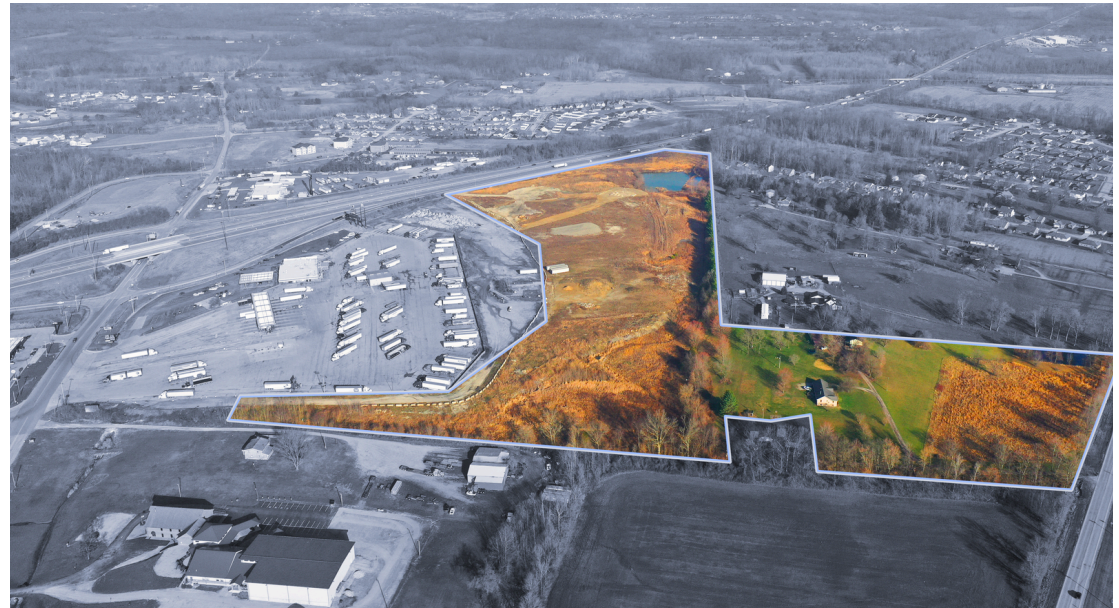
Zoning

 **CLARK COUNTY**

Jurisdiction

 **ELECTRIC & WATER NEARBY**

Utility Access



Located just off I-65 at Exit 16, this ±45.61-acre site presents a rare opportunity to acquire a large-scale, highly visible development tract within the Louisville MSA. Featuring approximately 1,200 feet of interstate frontage along I-65 and direct frontage on Highway 31, the property offers exceptional accessibility, visibility, and exposure to over 47,000 vehicles per day.

The site consists of three contiguous parcels and is currently zoned Agricultural, providing a blank slate for a variety of future development scenarios. Given its size, frontage, and strategic positioning along a major interstate corridor, the property is well-suited for industrial, multifamily, or a larger-scale mixed-use development.

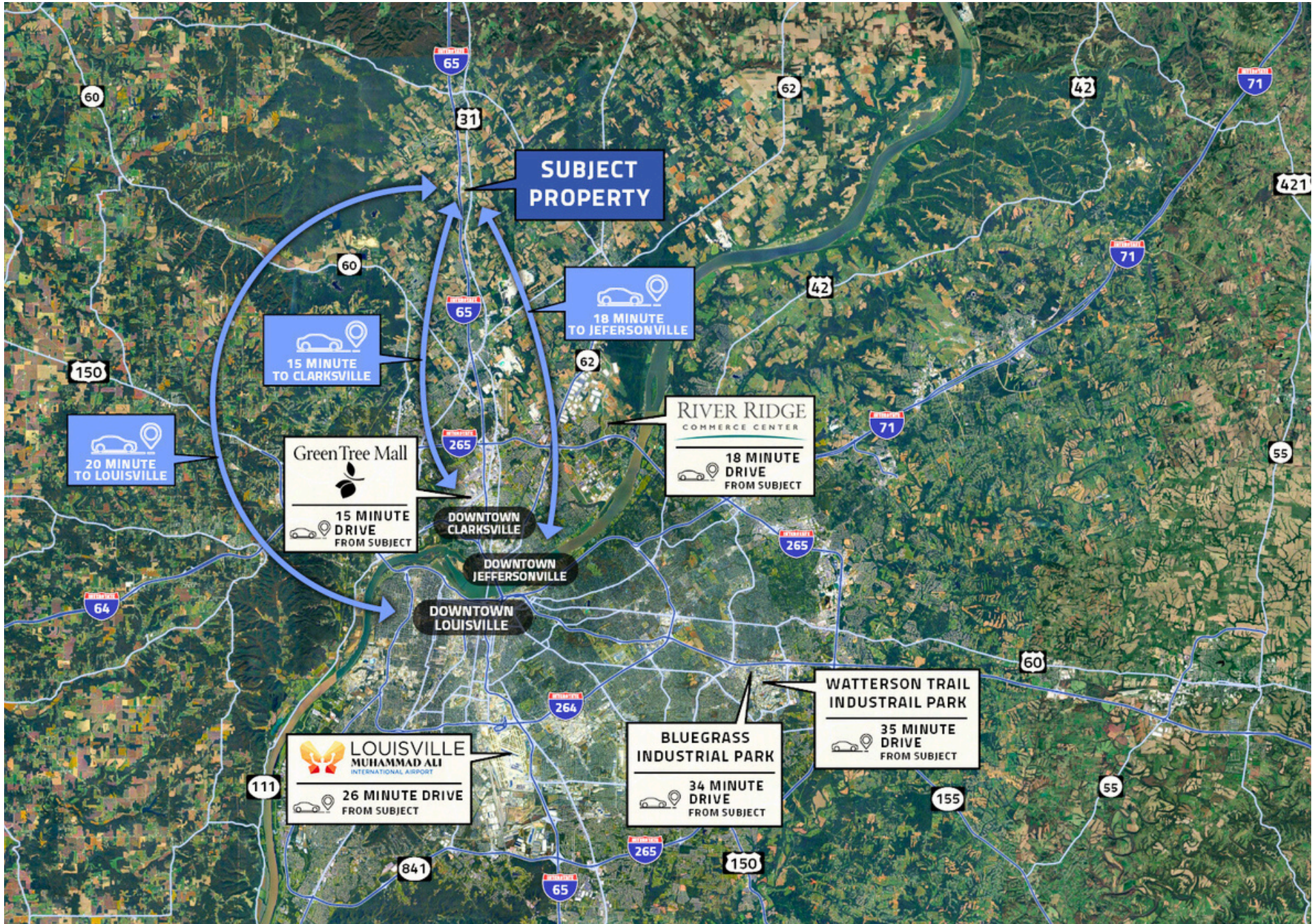
With its scale and flexibility, the property can be acquired as a whole or subdivided to accommodate a wide range of user needs and phased development strategies. Ownership is supportive of zoning changes and entitlement timelines, allowing developers to fully realize the site's highest and best use.



SITE AERIAL



SITE LOCATION



NEARBY POINTS OF INTEREST



Hub	Est. Drive Time	Positioning
River Ridge Commerce Center	18 min	Major regional distribution and manufacturing hub
Sellersburg / Jeffersonville I-65 Industrial Corridor	12-18 min	Warehouse, service industrial, and logistics concentration
Downtown Clarksville	17-20 min	Southern Indiana retail and commercial node
Downtown Jeffersonville	20-22 min	Riverfront dining, retail, and mixed-use destination
Watterson Industrial Corridor	25-30 min	Central infill industrial and airport-related logistics corridor
NuLu / Downtown Louisville	23-27 min	Urban core dining, entertainment, and mixed-use corridor
UPS Worldport / Airport Logistics Hub	28-32 min	Global logistics anchor for the region
Bluegrass Industrial Park	30-35 min	Established East End industrial and distribution hub
St. Matthews Mall / Shelbyville Rd Corridor	30-32 min	One of the region's premier established retail corridors
Riverport Industrial Park	35-40 min	Heavy industrial, river-served, and rail-oriented hub
Springhurst & Norton Commons	34-40 min	High-performing suburban retail and lifestyle node
Indianapolis, IN	75 - 90 min	Heading North on I-65

REGION



MARKET OVERVIEW



Regional

Memphis, Indiana is strategically positioned along the I-65 corridor within Clark County, one of the fastest-growing areas in Southern Indiana and a key component of the greater Louisville Metropolitan Statistical Area. While the immediate surroundings offer a more rural and flexible development environment, the property benefits from direct connectivity to one of the Midwest's most dynamic economic regions.

The Louisville MSA serves as a major logistics, manufacturing, and distribution hub, anchored by global infrastructure such as UPS Worldport, one of the largest air cargo hubs in the world. The region is also home to major employers including Ford Motor Company, GE Appliances, and a growing base of e-commerce and third-party logistics operators.

Southeast from Memphis, River Ridge Commerce Center has emerged as one of the most significant industrial developments in the Midwest, encompassing more than 6,000 acres and supporting thousands of jobs across manufacturing, distribution, and advanced logistics. The site's proximity to River Ridge, combined with direct interstate access, positions it as a logical extension for users seeking accessibility without the constraints or pricing of core industrial parks.

Clark County and the broader Southern Indiana market continue to experience steady population and economic growth, driven in part by relative affordability, business-friendly policies, and proximity to Louisville's employment base.

The immediate area surrounding the property is beginning to see increased attention from both public and private investment. Most notably, an approximately 80-acre neighboring tract has been acquired by the Indiana National Guard for the development of a consolidated armory, recruitment, and training center serving Southern Indiana. This project represents a significant long-term institutional investment and is expected to bring consistent activity, infrastructure improvements, and additional economic momentum to the area.

Why This Location Works

What makes this site unique is its ability to offer both access and scale, a combination that is increasingly difficult to find within the Louisville MSA. Users can reach major employment centers, retail corridors, and industrial hubs within a reasonable drive time, while still benefiting from a lower-density environment that is more conducive to large-scale development. With over 1,200 feet of interstate frontage and 45+ contiguous acres, the site supports a wide range of uses, including industrial, logistics, multifamily, or a phased mixed-use development. As growth continues to push outward, opportunities with this level of visibility, accessibility, and scale are becoming increasingly attractive to developers and long-term investors.

DEMOGRAPHICS

	1 - Mile	5 - Miles	10 - Miles
2024 Population	1,397	13,140	70,350
Median Age	38.3	39.8	41.1
Average HH Income	\$94,700	\$109,024	\$98,092
Employees	708	6,942	37,332
Households	521	4,807	26,350
Median Home Value	\$211,137	\$247,070	\$231,008

This site offers a compelling opportunity for a variety of potential uses, supported by a broad and stable demographic base. Within a 10-mile radius, the site draws from more than 70,000 residents and 26,000 households, with continued growth projected over the next five years. Household incomes are strong, with average household income reaching approximately \$109,000 within five miles and median household income remaining above \$80,000 across all measured rings.

The surrounding area benefits from a high level of homeownership, stable housing values, and an established workforce base, all of which support a range of future development strategies. Given the site's larger scale, these demographics are particularly supportive of more comprehensive development concepts, including industrial campuses, multifamily communities, or a phased mixed-use environment that can evolve over time.

ADDITIONAL ACREAGE AVAILABLE





Dylan Gilezan

(502) 648-7874
dylan@gilezanteam.com
License # 274341(KY)

Tanner Lopez

(502) 640-8842
tanner@gilezanteam.com
License # 281955 (KY)

Cal Lewellyn

(502) 905-2253
cal@gilezanteam.com
License # 279265 (KY)

Sam Higdon

(502) 235-0629
samh@gilezanteam.com
License # 266524 (KY)

All property information contained herein has been obtained from sources believed to be reliable; however, no warranty or representation, expressed or implied, is made as to its accuracy or completeness. Prices, terms, availability, and other details are subject to change or withdrawal without notice. Photographs, renderings, and other images are provided for illustrative purposes only and may depict finishes, fixtures, dimensions, or views that differ from the actual property. Prospective purchasers and tenants should conduct their own independent investigations, inspections, and verifications.