

# JARDINS ROSEMÈRE

ROSEMÈRE



## JARDINS ROSEMÈRE 395-401, GRANDE-CÔTE Road

### Leasing Availabilities

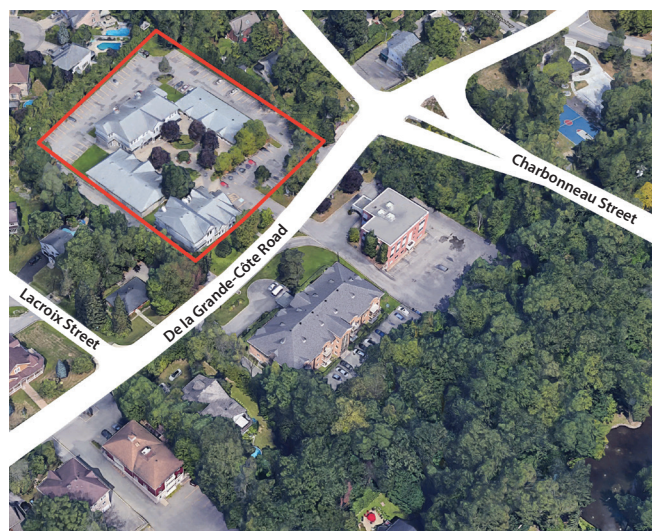
Suite 204:	984 sq. ft.	Office
Suite 207:	1,008 sq. ft.	Office
Suite 208:	504 sq. ft.	Office
Combined suites:	2,496 sq. ft.	
Suite 395:	6,218 sq. ft.	Office or retail

### Property Details

Total leasable area:	22,469 sq. ft.
Parking Spaces:	100

### Highlights

- 6,218 sq. ft. available office or retail space
- Beautiful community property featuring country-style architecture
- Strategically located on Grande-Côte Road in Rosemère
- Competitive rental rates
- Pylon signage available
- Ample free parking lot

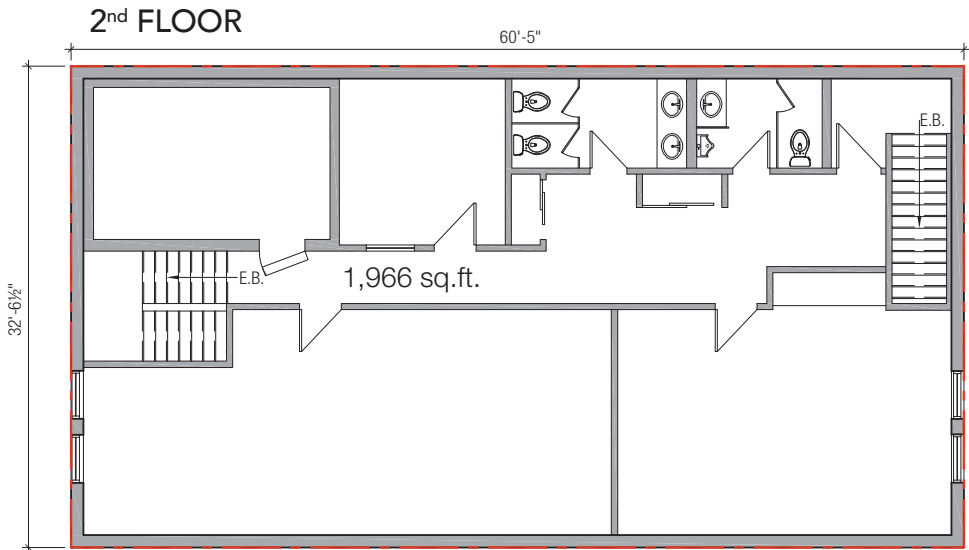
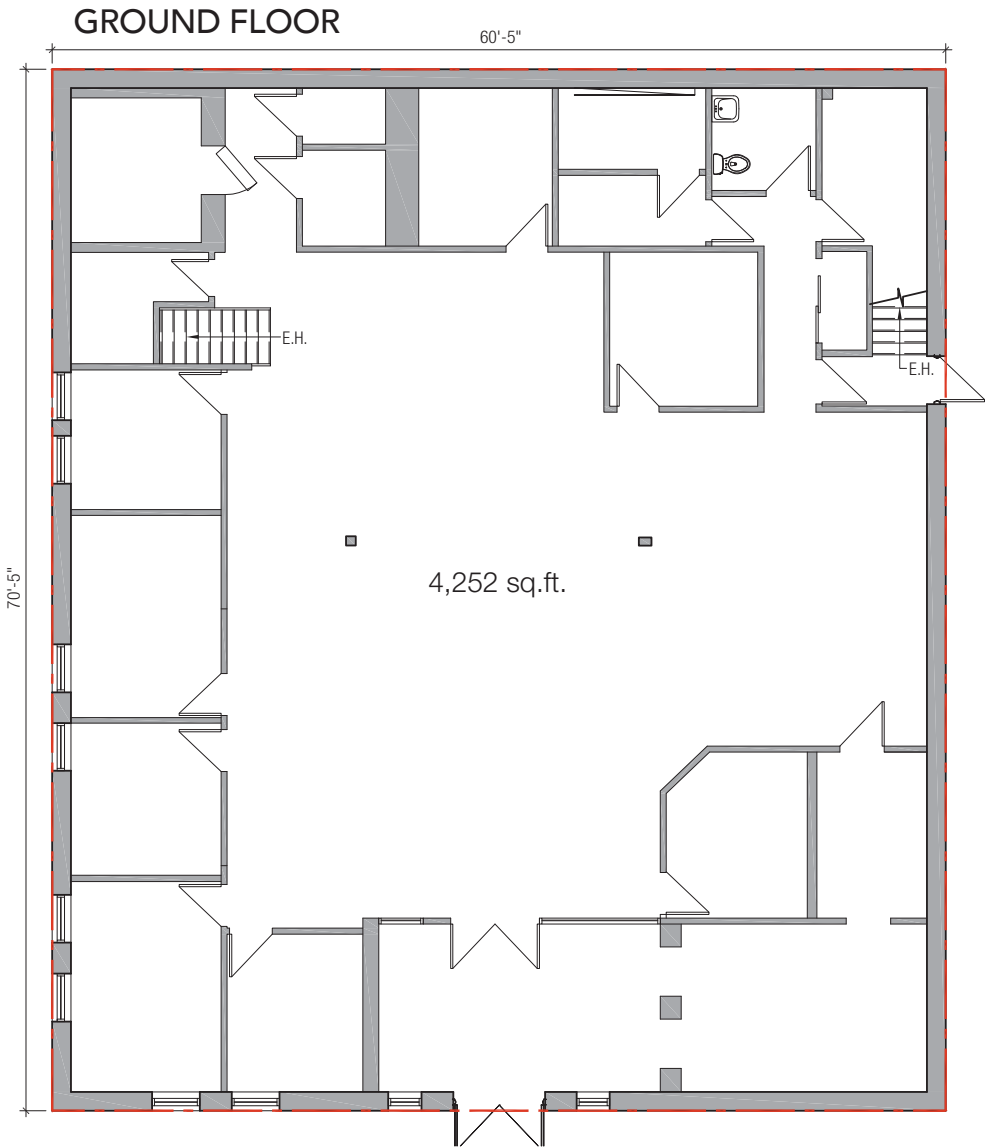


**Gisèle Durepos**  
Leasing Director  
Commercial Division  
Real estate broker  
☎ 514 774-7179  
✉ [gdurepos@cogir.net](mailto:gdurepos@cogir.net)

**Joseph Télió**  
Vice-President, Leasing  
Commercial Division  
Real estate broker  
☎ 450 766-2454 ☎ 514 213-3910  
✉ [jtelió@cogir.net](mailto:jtelió@cogir.net)

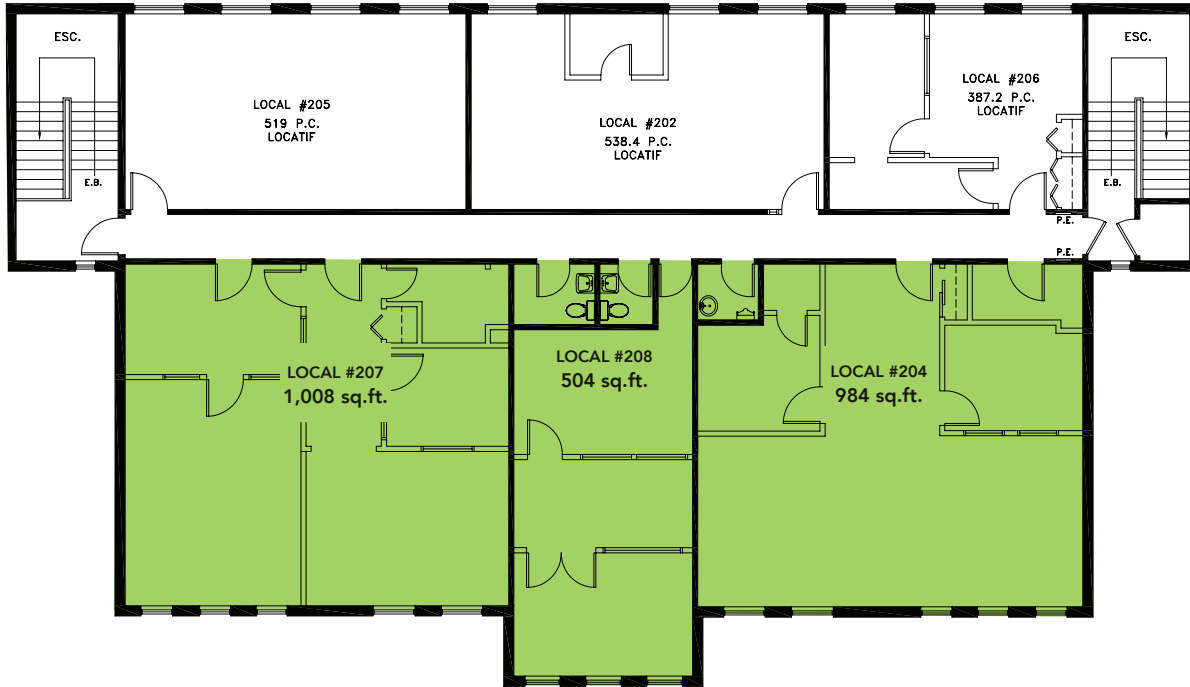
**Louis Parent**  
Leasing Director  
Commercial Division  
Commercial Real estate broker  
☎ 514 291-2750  
✉ [lparent@cogir.net](mailto:lparent@cogir.net)

AVAILABLE OFFICE OR RETAIL SPACE FOR LEASE: 6,218 sq. ft. | 395, GRANDE-CÔTE ROAD



## Office space - 2<sup>nd</sup> floor

- Suite 204: 984 sq. ft.
- Suite 207: 1,008 sq. ft.
- Suite 208: 504 sq. ft.
- Combined suites: 2,496 sq. ft.



## JARDINS ROSEMÈRE | Site plan

