

BRING YOUR RESTAURANT VISION TO LIFE IN COLUMBIA'S CULINARY HUB

8300 Benson Dr,
Columbia, MD 21045

PROPERTY OVERVIEW

Located in a high-traffic, vibrant area, this restaurant space is ideal for fast-casual dining. Surrounded by businesses, retail, and attractions, it offers excellent visibility and steady foot traffic. Flexible layouts starting at **2,300 sq. ft.** make it perfect for new concepts or expanding brands looking to grow in a thriving community.

KEY FEATURES

- Prime location attracting both locals and visitors
- Ample on-site parking for customer convenience
- Part of a thriving restaurant community with strong existing foot traffic

**SECURE YOUR SPOT IN ONE OF COLUMBIA'S
TOP DINING DESTINATIONS—SCHEDULE A
TOUR TODAY!**



DONALD REUWER

410-707-7054

dreuwer@ldandd.com

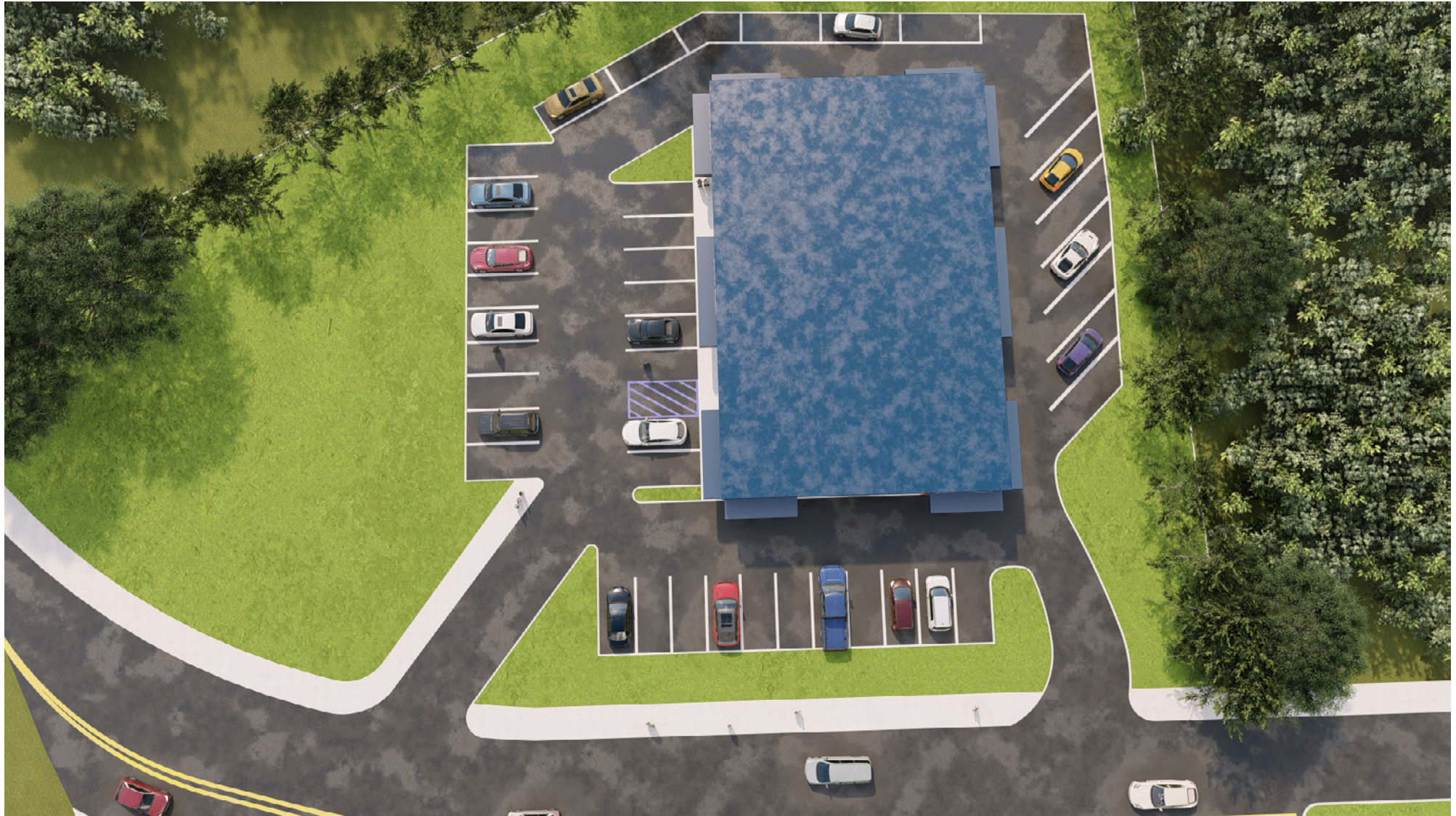


All information is from sources deemed reliable and is submitted subject to errors, omissions, change of price, terms, prior sales and withdrawals.

BRING YOUR RESTAURANT VISION TO LIFE IN COLUMBIA'S CULINARY HUB

8300 Benson Dr,
Columbia, MD 21045

SITE PLAN

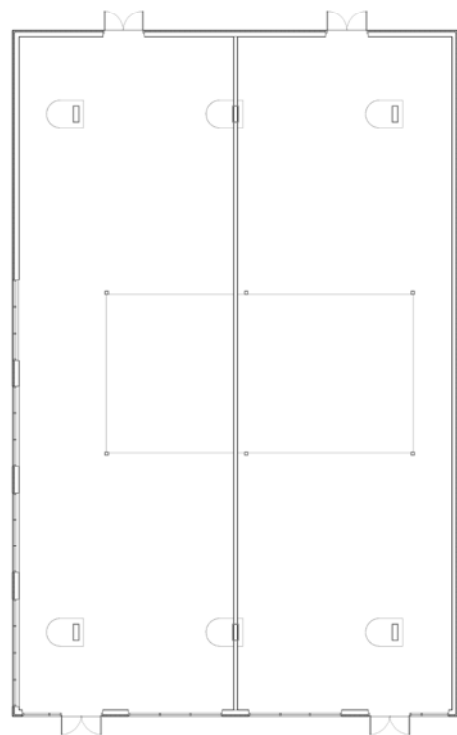


All information is from sources deemed reliable and is submitted subject to errors, omissions, change of price, terms, prior sales and withdrawals.

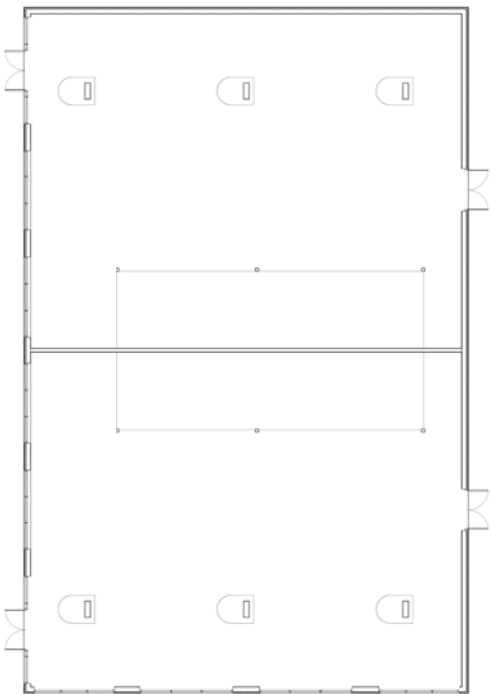
BRING YOUR RESTAURANT VISION TO LIFE IN COLUMBIA'S CULINARY HUB

8300 Benson Dr,
Columbia, MD 21045

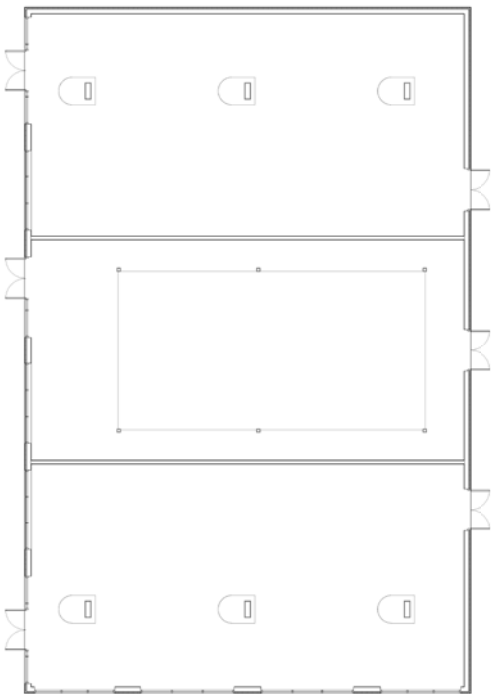
FLOOR PLAN OPTIONS



1	Option 1 FLOOR PLAN
SCALE: 1/8" = 1'-0"	



2	Option 2 FLOOR PLAN
SCALE: 1/8" = 1'-0"	



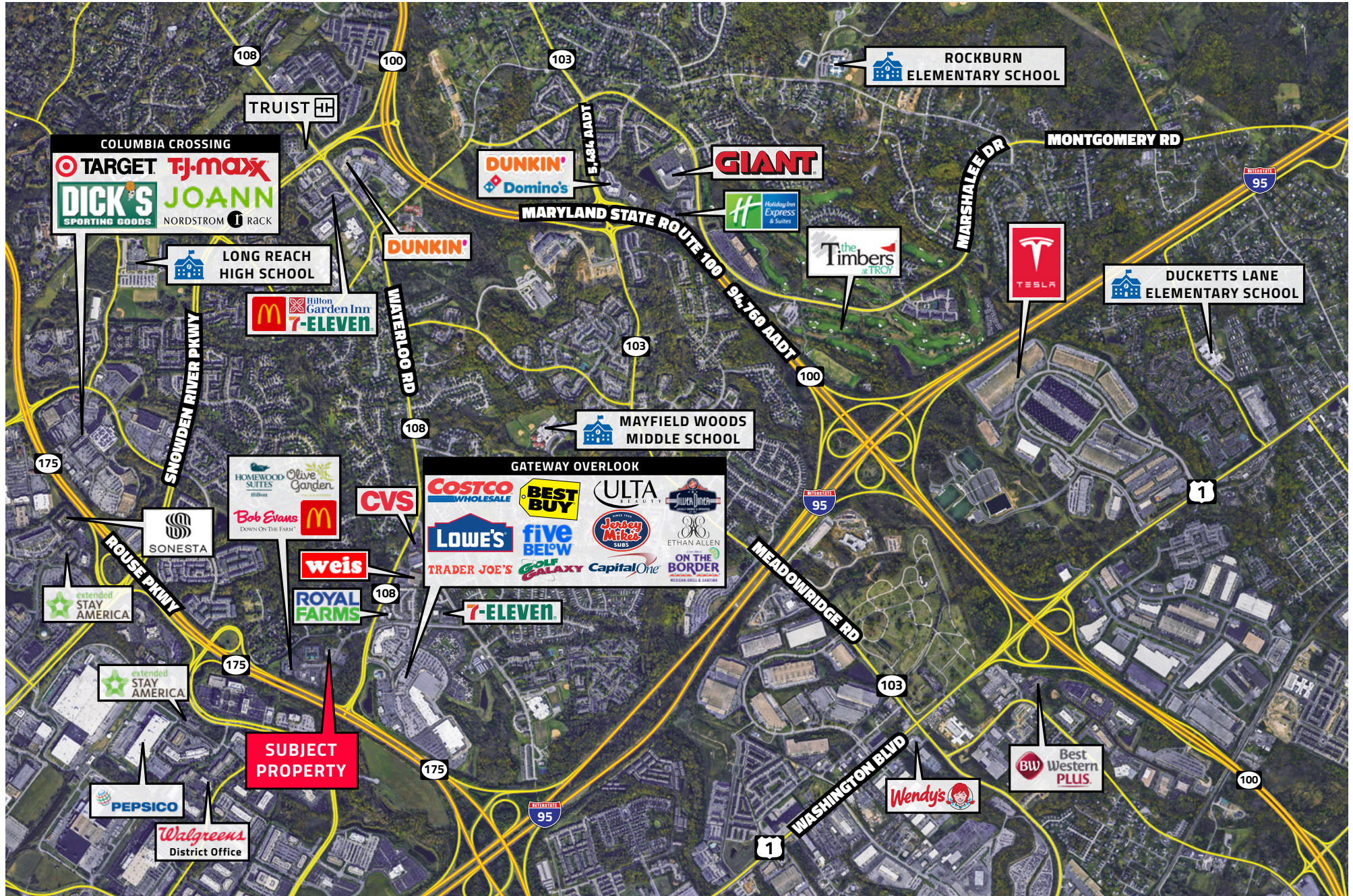
3	Option 3 FLOOR PLAN
SCALE: 1/8" = 1'-0"	

All information is from sources deemed reliable and is submitted subject to errors, omissions, change of price, terms, prior sales and withdrawals.

BRING YOUR RESTAURANT VISION TO LIFE IN COLUMBIA'S CULINARY HUB

8300 Benson Dr,
Columbia, MD 21045

MIDRANGE AERIAL



All information is from sources deemed reliable and is submitted subject to errors, omissions, change of price, terms, prior sales and withdrawals.