

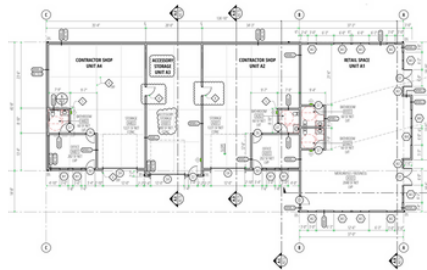
COMMERCIAL RETAIL SPACE **FOR LEASE**



\$2.00 PSF



UNDER CONSTRUCTION!



2,277 Square feet
of retail space



High-visibility
location



Open retail layout



Optional attached
warehouse spaces

9409 N. AERIAL CIRCLE, HAYDEN, ID 83835

Ideal for retail, boutique services, or showroom use

Conveniently located off Hwy 95 on West Hayden Ave: the West Hayden Plaza is a high-traffic area with great visibility and easy access.

This versatile retail space offers flexible add-on warehouse/shop options to fit your business needs: perfect for storage, operations, or contractor use. Customize your setup with up to 4,000+ SF of additional warehouse space available.



BRENDA OLSON

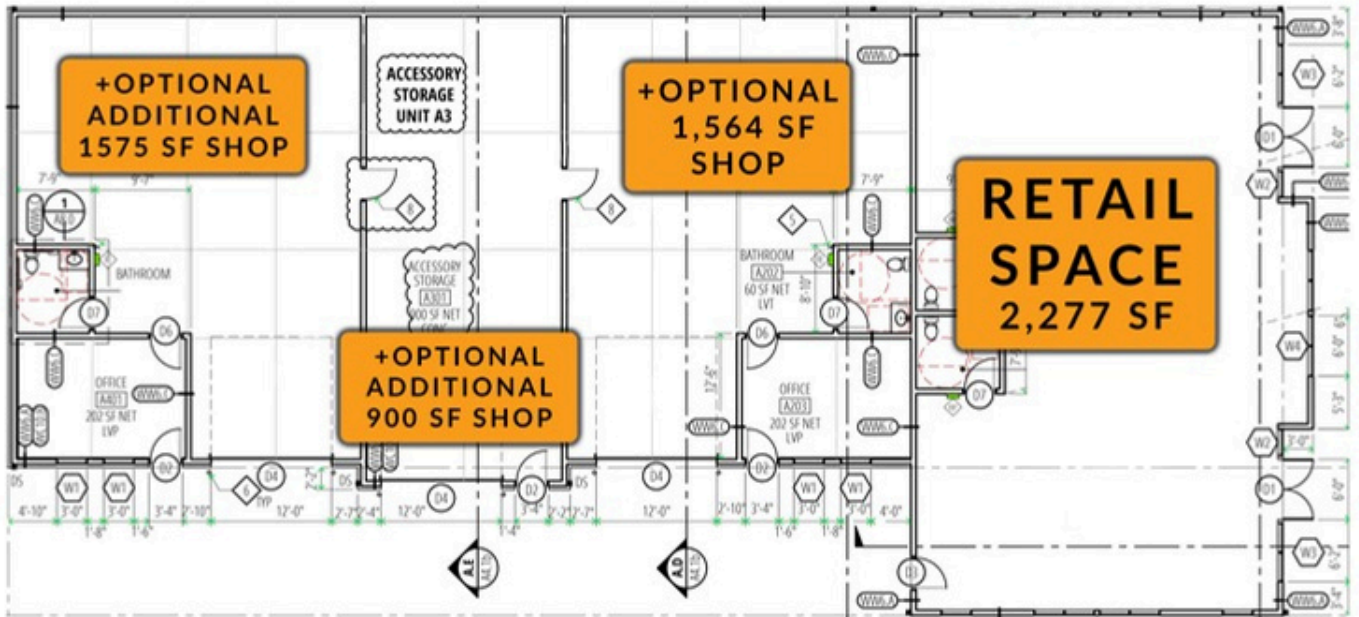


(702) 575-9628



1677 E. MILES ROAD HAYDEN LAKE, ID 83835

CUSTOMIZABLE SPACE TO FIT YOUR NEEDS



BASE SPACE

- 2.00 PSF -

2,277 SF Retail Space Spacious, high-visibility storefront with open layout and direct access from West Hayden Avenue

OPTIONAL ADD ON SPACES

- 1.50 PSF -

- + 1,564 SF Attached Shop/Warehouse
- + 900 SF Warehouse/Shop Space
- + 1,575 SF Warehouse/Shop Space

