



# OFFICE SPACE FOR LEASE 110 S HAGER AVE, BARRINGTON, IL



## BUILDING FEATURES:

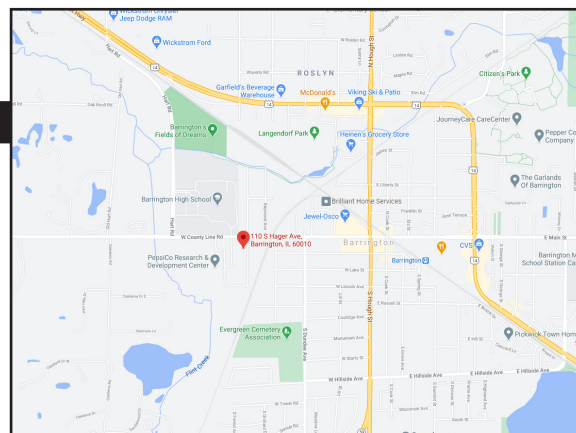
- Building Renovations Including common areas, New LED lighting, flooring, signage & parking lot upgrades in 2021
- 225 RSF Available (Suite 101-D)
- Building renovations in 2022
- Operable Windows and Efficient Layouts
- Located Across from Barrington High School
- All Inclusive Executive Suites available 180- 400 SF
- High End Finishes & ADA Restrooms

- Ample Parking on site
- Near Restaurants, Shopping and Metra
- Exterior Signage Available
- RENTAL RATE: SEE BELOW  
\* Rate Includes HVAC, Janitorial & Electricity  
WI-FI & Common Area Kitchen Access
- Visit [www.chicagolandcommercial.com](http://www.chicagolandcommercial.com) for links to 3-D Virtual Tours!!

## AVAILABLE SPACE:

SUITE	SIZE (SF)	PRICING	AVAILABLE
101-D	225 RSF	\$450 Per Month **	ASAP

\*\*EXECUTIVE OFFICE SUITES HAVE OPERABLE WINDOWS & INCLUDES UTILITIES & WI-FI\*\*



## FOR MORE INFORMATION:

RANDY OLCZYK  
Direct: 847.246.9611

[randy@chicagolandcommercial.com](mailto:randy@chicagolandcommercial.com)

TOM CALLAHAN  
Direct: 847.246.9636

[Tom@chicagolandcommercial.com](mailto:Tom@chicagolandcommercial.com)



4811 Emerson Ave Suite 112, Palatine, IL 60067

[www.chicagolandcommercial.com](http://www.chicagolandcommercial.com)





# OFFICE SPACE FOR LEASE

110 S HAGER AVE, BARRINGTON, IL

## INTERIOR BUILDING PHOTOS







# OFFICE SPACE FOR LEASE

110 S HAGER AVE, BARRINGTON, IL

## INTERIOR BUILDING PHOTOS

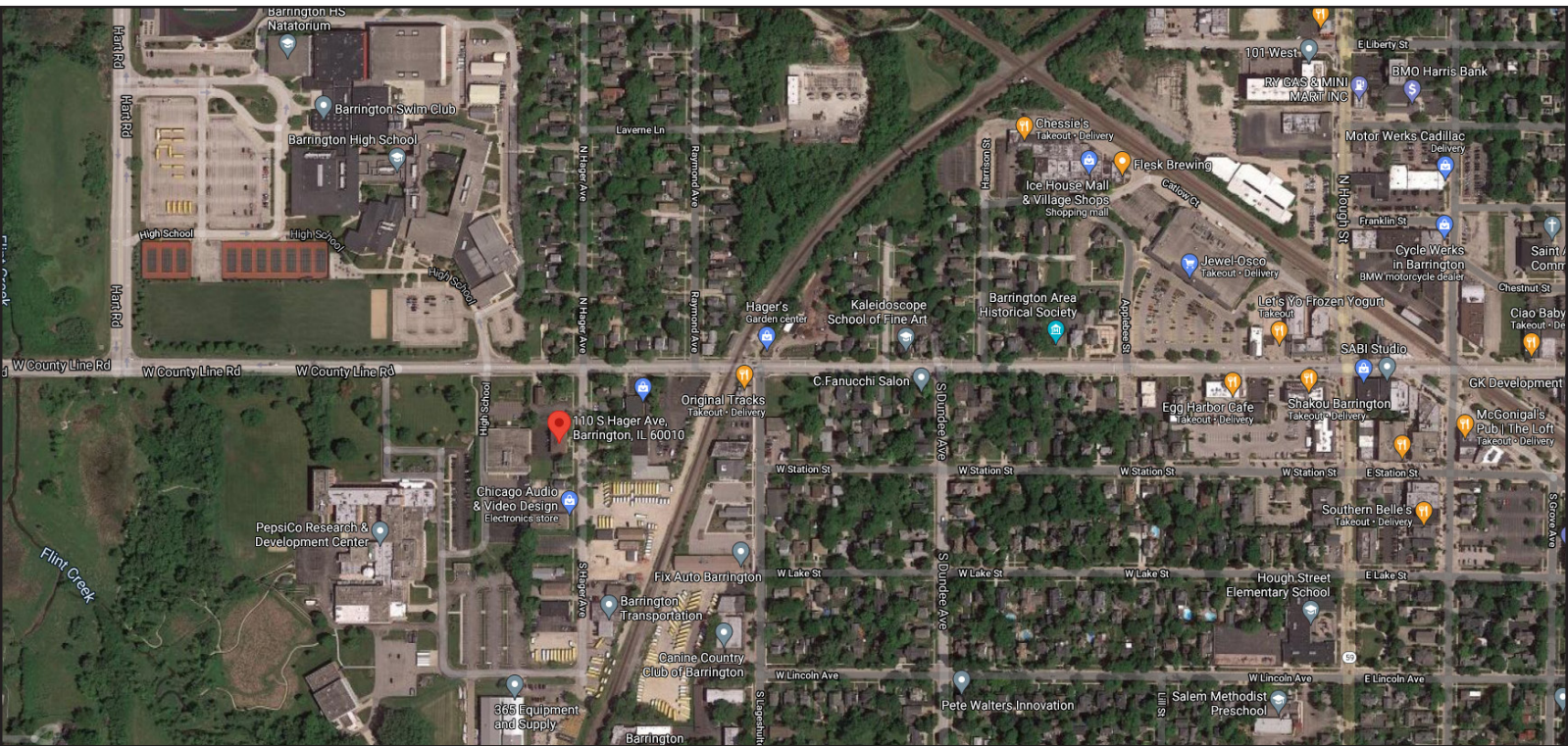
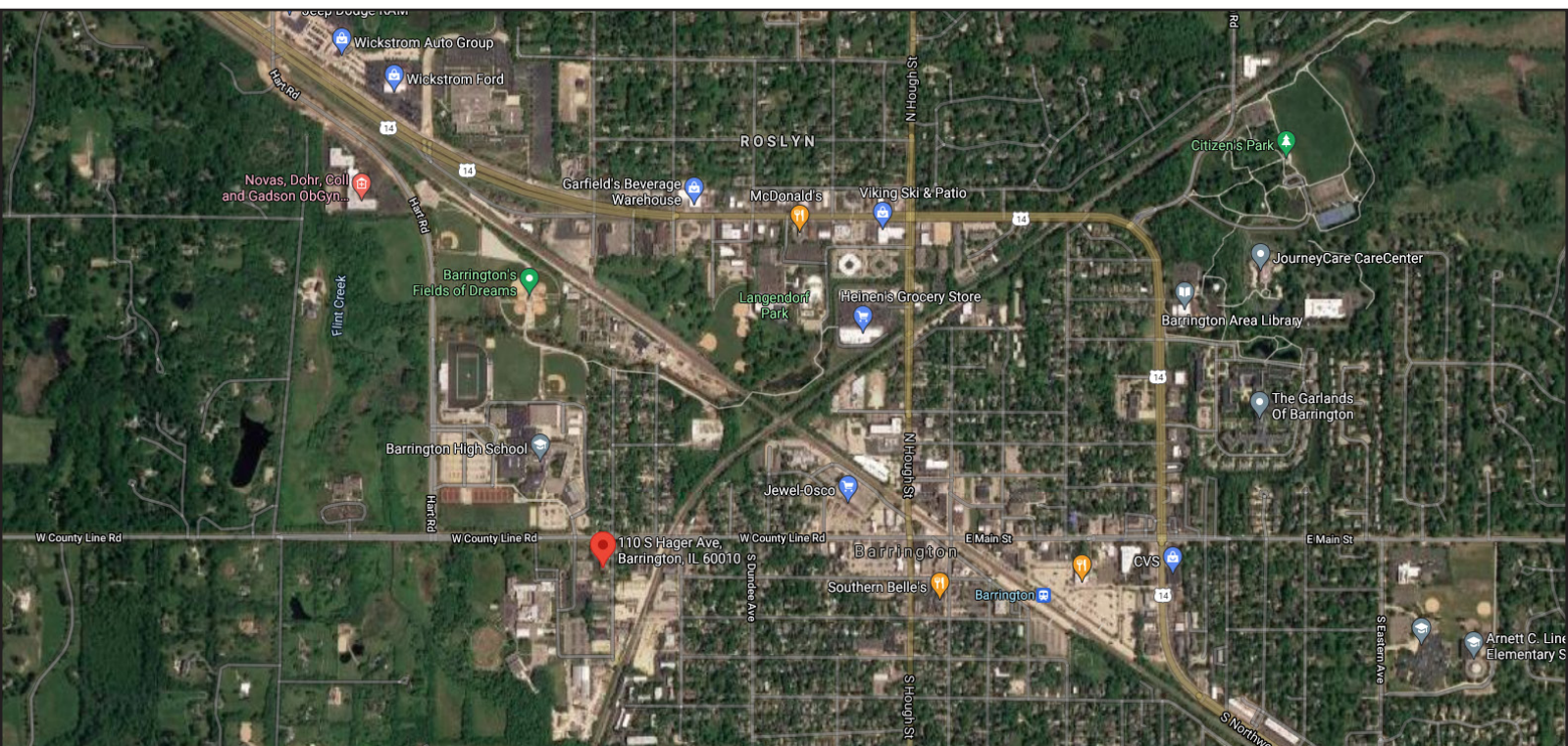






# OFFICE SPACE FOR LEASE 110 S HAGER AVE, BARRINGTON, IL

## AERIAL MAP



### FOR MORE INFORMATION:

**RANDY OLCZYK**  
Direct: 847.246.9611  
randy@chicagolandcommercial.com

**TOM CALLAHAN**  
Direct: 847.246.9636  
@chicagolandcommercial.com



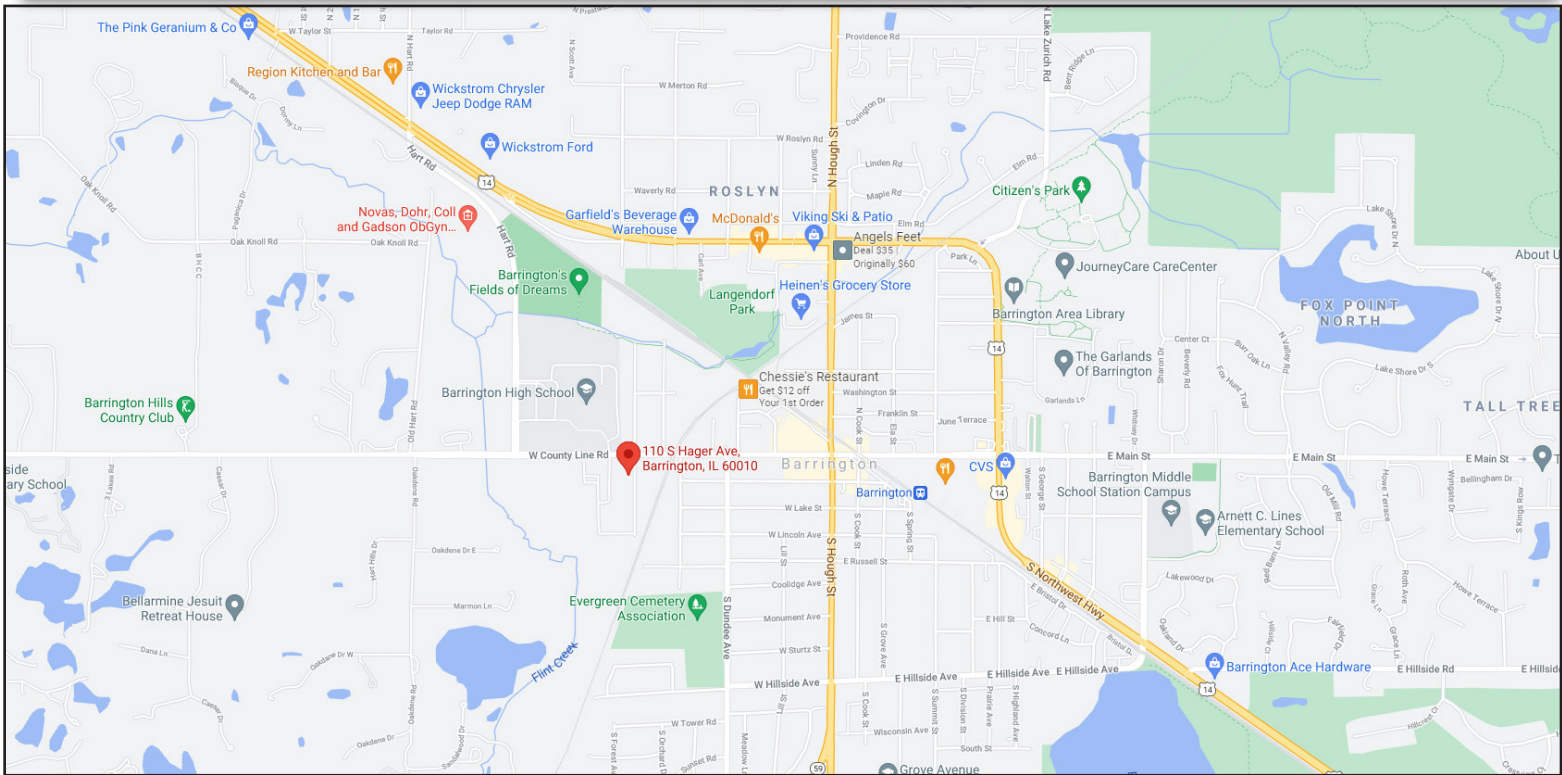
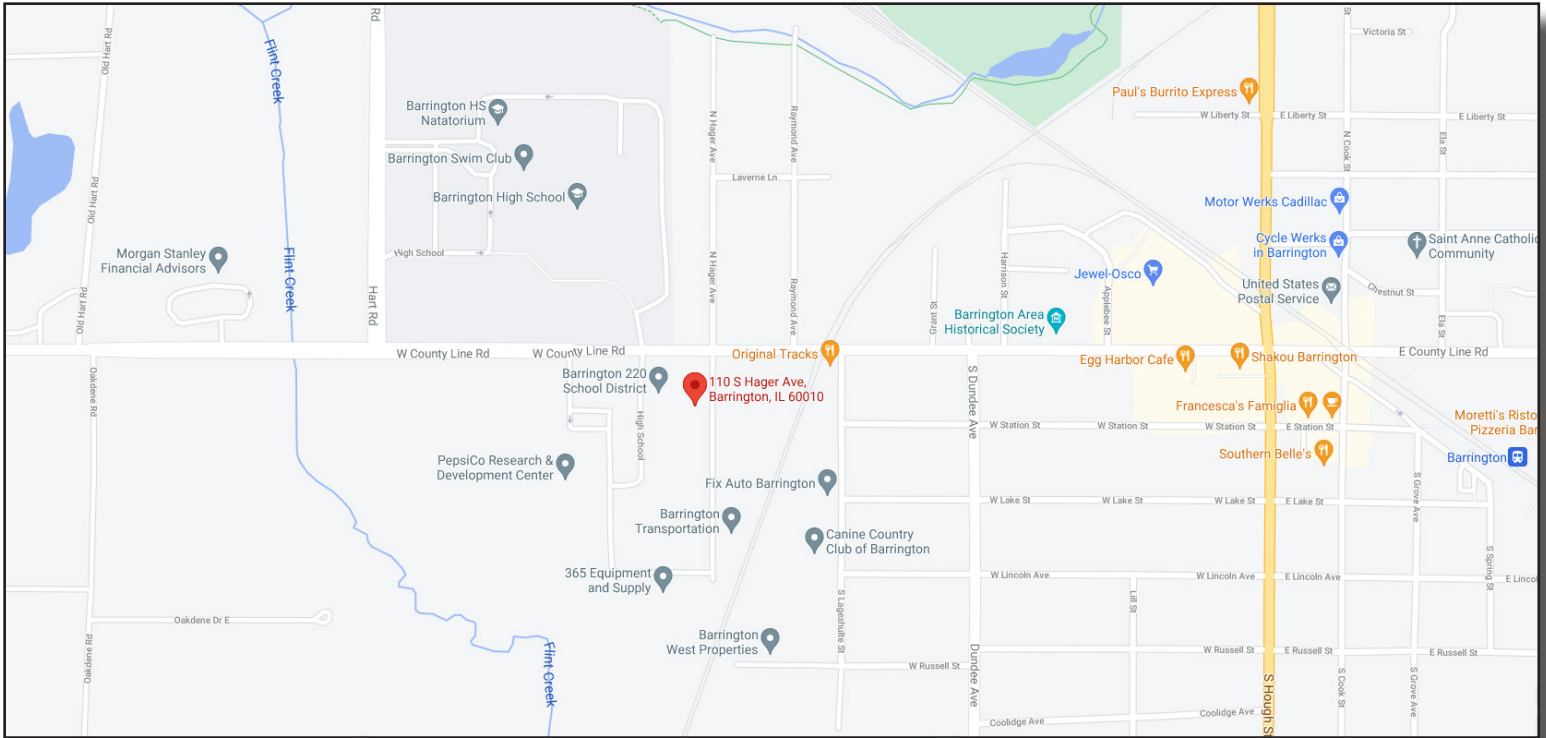
4811 Emerson Ave Suite 112, Palatine, IL 60067





# OFFICE SPACE FOR LEASE 110 S HAGER AVE, BARRINGTON, IL

## LOCATION MAP



### FOR MORE INFORMATION:

**RANDY OLCZYK**  
Direct: 847.246.9611  
randy@chicagolandcommercial.com

**TOM CALLAHAN**  
Direct: 847.246.9636  
@chicagolandcommercial.com

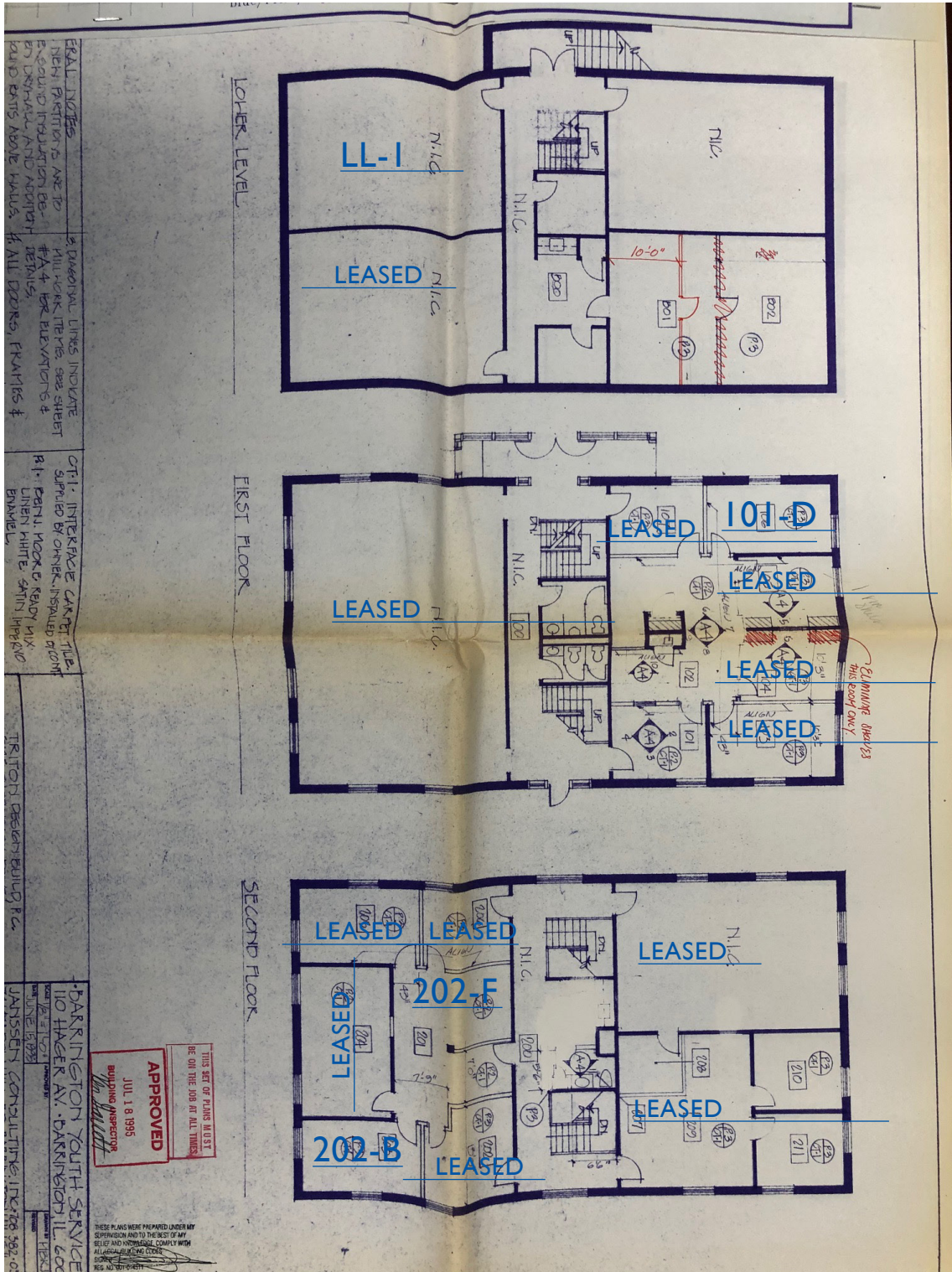


4811 Emerson Ave Suite 112, Palatine, IL 60067



# OFFICE SPACE FOR LEASE 110 S HAGER AVE, BARRINGTON, IL

## FLOOR PLATES



### FOR MORE INFORMATION:

RANDY OLCZYK  
Direct: 847.246.9611  
randy@chicagolandcommercial.com

TOM CALLAHAN  
Direct: 847.246.9636  
@chicagolandcommercial.com



4811 Emerson Ave Suite 112, Palatine, IL 60067

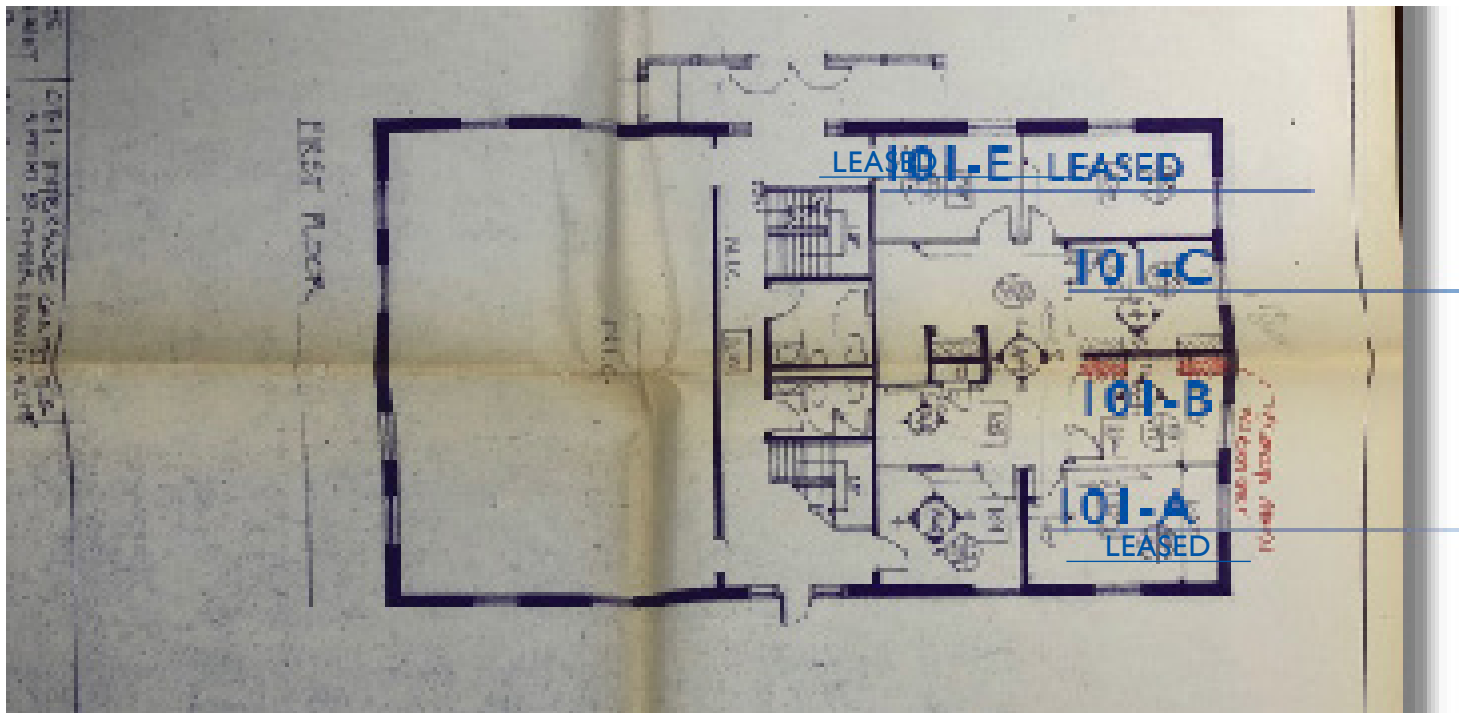
www.chicagolandcommercial.com





# OFFICE SPACE FOR LEASE 110 S HAGER AVE, BARRINGTON, IL

## SUITE 101 EXECUTIVE SUITES A-E



### AVAILABLE SPACE:

SUITE	SIZE (SF)	PRICING	AVAILABLE
101-D	225 RSF	\$450 Per Month **	ASAP

\*\*EXECUTIVE OFFICE SUITES HAVE OPERABLE WINDOWS & INCLUDES UTILITIES & WI-FI\*\*

### FOR MORE INFORMATION:

RANDY OLCZYK  
Direct: 847.246.9611  
randy@chicagolandcommercial.com

TOM CALLAHAN  
Direct: 847.246.9636  
@chicagolandcommercial.com



4811 Emerson Ave Suite 112, Palatine, IL 60067

[www.chicagolandcommercial.com](http://www.chicagolandcommercial.com)



# OFFICE SPACE FOR LEASE

## 110 S HAGER AVE, BARRINGTON, IL

### SUITE 202 -F EXECUTIVE SUITES

110 S Hager Ave. Barrington, IL Suite 202



#### FOR MORE INFORMATION:

RANDY OLCZYK  
Direct: 847.246.9611  
randy@chicagolandcommercial.com

TOM CALLAHAN  
Direct: 847.246.9636  
@chicagolandcommercial.com



4811 Emerson Ave Suite 112, Palatine, IL 60067