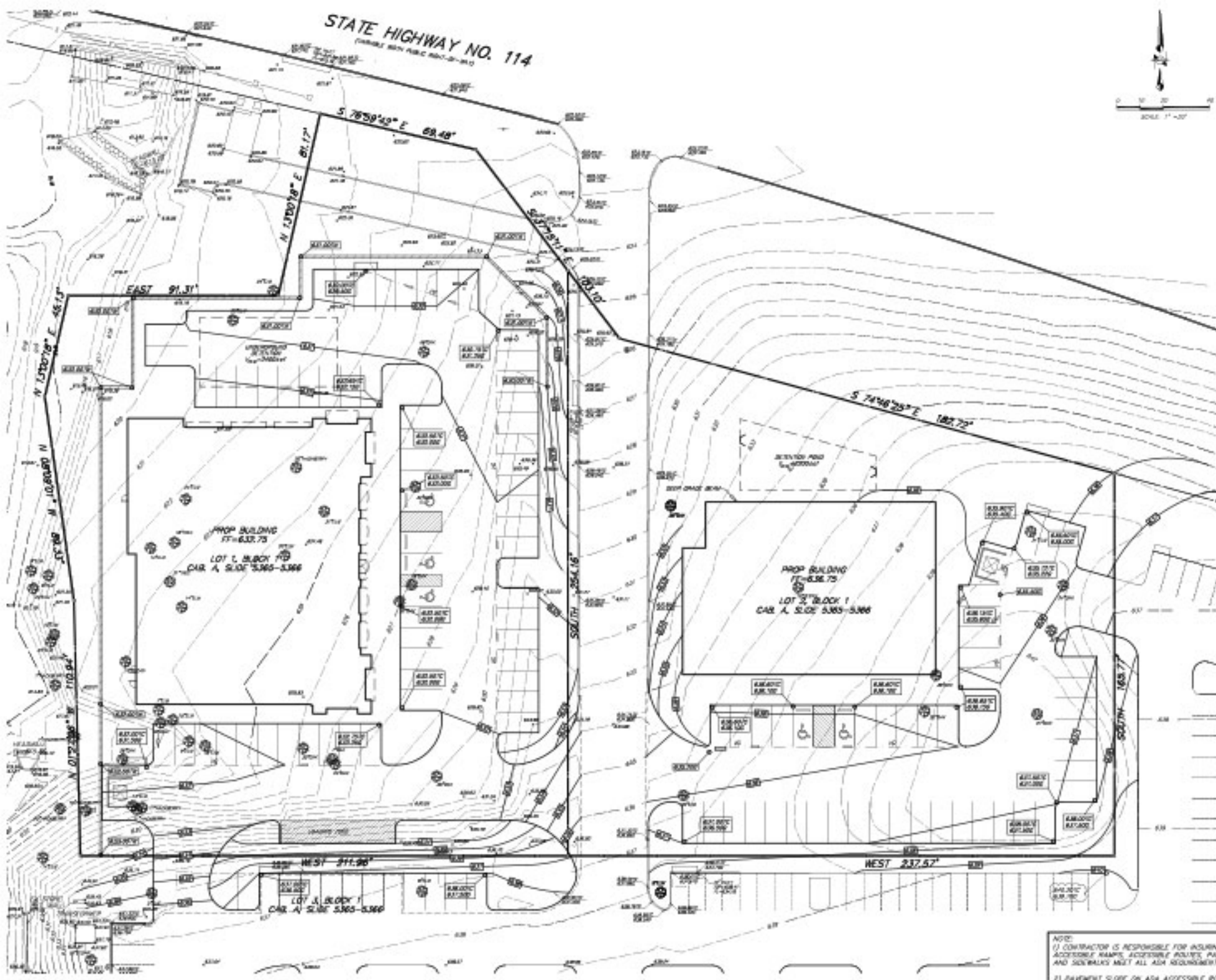


STATE HIGHWAY NO. 114
(USABLE WITH PUBLIC TRUST-01-94)



LEGEND

	EXISTING CONTOUR LINE
	PROPOSED CONTOUR LINE
	EXISTING SPOT ELEVATION
	EXISTING SPOT ELEVATION
	EXISTING SPOT ELEVATION
	PROPOSED SPOT ELEVATION
	UNITS OF PAVEMENT SHORT
	BY 1982

BENCHMARKS:
 SQUARE SET ON TOP OF CURB,
 CENTER OF A 10' INLET IN BEST CURB
 LINE OF DRIVE OFF OF EAST BOUND
 SERVICE ROAD OF HIGHWAY 114 IN
 FRONT OF ARCHITECTS OFFICE & ARTS
 AT GATEWAY PHASE I.
 ELEVATION=527.61'

REG. Raymond L. Gosselin, P.E.
 CHAIRMAN
 ARCHITECTS & ENGINEERS, P.C.
 11000 W. STATE HIGHWAY 114, SUITE 100
 FORT WORTH, TEXAS 76134-2000
 (817) 336-1100

PROCESS SET - FOR REVIEW ONLY
 Issued **05/30/06**

These documents are for Design Review and are not to be used for Construction, Closing or Permit Purposes. They were prepared by or under the supervision of:

Shawn M. Johnson, P.E. #63358
 Raymond L. Gosselin, Jr., Inc.

SHEET NO.
1
3

NOTE:
 (1) CONTRACTOR IS RESPONSIBLE FOR INSURING ALL ACCESSIBLE RAMPS, ACCESSIBLE ROUTES, PARKING SPACES AND SIDEWALKS MEET ALL ADA REQUIREMENTS.
 (2) PAVEMENT SLOPE ON ADA ACCESSIBLE ROUTES AND SIDEWALKS MUST NOT EXCEED 2% ALONG THE ROUTE AND 2% CROSS SLOPE.
 (3) ALL ADA PARKING SPACES MUST NOT EXCEED 2% SLOPE IN ALL DIRECTIONS.

GRADING PLAN						
INLAND DEVELOPMENT						
GATEWAY PLAZA						
GSO ARCHITECTS						
CITY OF SOUTHLAKE, TEXAS						
DESIGN	DRAWN	DATE	SCALE	NOTES	FILE	NO.
R.L.G.	R.L.G.	4/19/06	1"=20'	06	06	325
JOB NO.	06-325	E-FILE	E-FILE	DWG. NO.		