

# 107 North 1st Street

WILLIAMSBURG  
BROOKLYN, NY

NEWMARK



CONCEPTUAL RENDERING

## 107 NORTH 1ST STREET

# Property Details

### Location

North block between Berry Street and Wythe Avenue

### Approximate Size

Ground Floor	1,700 SF
Lower Level	3,000 SF
Rooftop	3,300 SF
Total	8,000 SF

### Term

Long term

### Frontage

45 FT on North 1st Street

### Possession

Immediate

### Site Status

New construction

### Neighbors

Gelateria Williamsburg, Nitehawk Cinema, PLANTA, Rivian, Black Seed Bagels, Aurora Brooklyn, 12 Chairs, Roberta's, Other Half Brewing, Two Hands, Trader Joe's, Supreme Williamsburg, Freehold, Misi, Devocion, Jack's Wife Freda and Radegast Hall & Biergarten

### Comments

Steps from the new and exciting Refinery at Domino campus and the future River Ring Development by Two Trees. Once complete both developments will collectively include over 4,000 residential units, 700,000 SF of office space, best in class retail space, 10 acres of world-class open space, and the Domino Park on the waterfront, which hosts nearly 1 million visitors per year

Equipped with black-iron venting for a restaurant

Unique rooftop opportunity with amazing views of Williamsburg; Rooftop can be leased separately

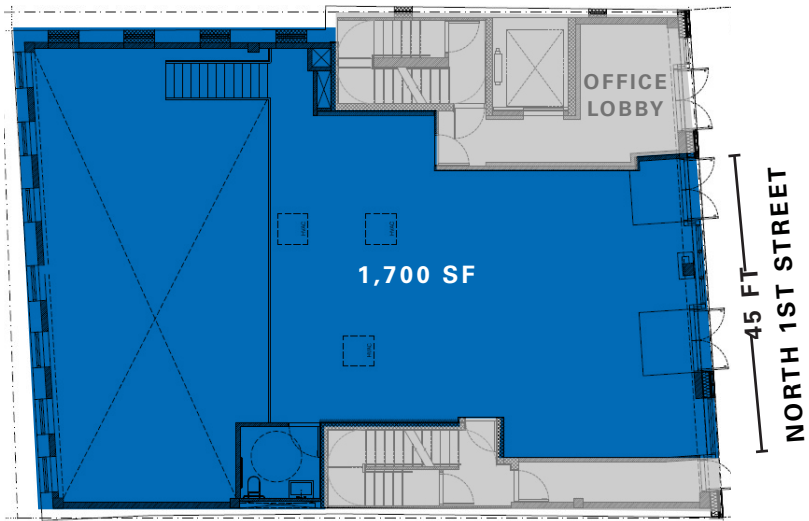
Seven minute walk to Bedford Avenue subway station servicing the **L** line to Manhattan and East Brooklyn

20 FT ceiling in the rear of the Lower Level space

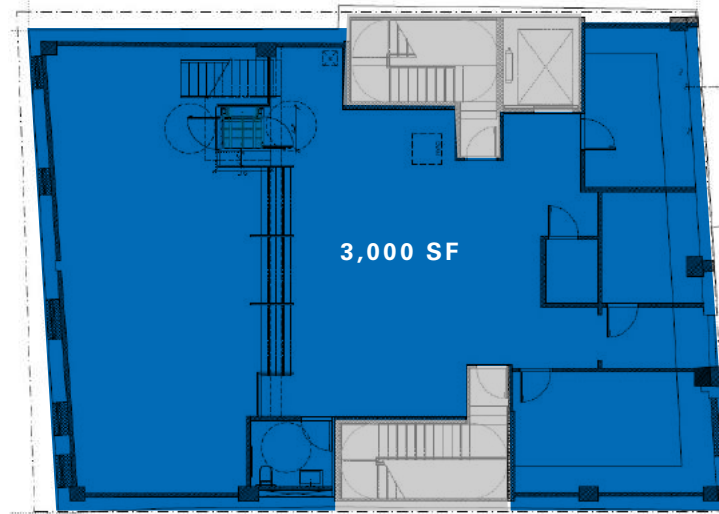


# Floor Plans

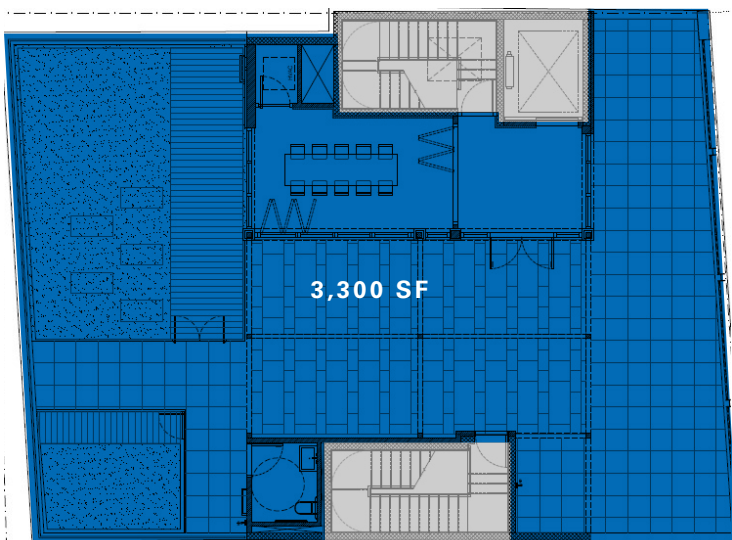
Ground Floor



Lower Level



Rooftop



# Domino Park



# 107 NORTH 1ST STREET



+ COMING SOON

## CONTACT

**Jeremy Ezra**  
 t 212-351-9351  
 jeremy.ezra@nrmk.com

**Mai Shachi**  
 t 212-916-2927  
 mai.shachi@nrmk.com

[nrmk.com](http://nrmk.com)