

COCHRAN

— commons —

151 ROESSLER ROAD, PITTSBURGH, PA 15220



OFFICE SPACE FOR LEASE WORK @ COCHRAN COMMONS

Space Highlights:

- Space Available on Multiple Floors:
Between 2,000 SF and 16,000 SF
- Asking Rent \$19.50 including utilities and janitorial
- Floor to ceiling glass windows with gorgeous views
- Space will be fully renovated prior to occupancy
- Abundant surface parking
- Numerous tenant amenities nearby



BUILDING LOBBY

NEWMARK

The information contained herein has been obtained from sources deemed reliable but has not been verified and no guarantee warranty or representation either express or implied is made with respect to such information. Terms of sale or lease and availability are subject to change or withdrawal without notice.

For information, please contact:

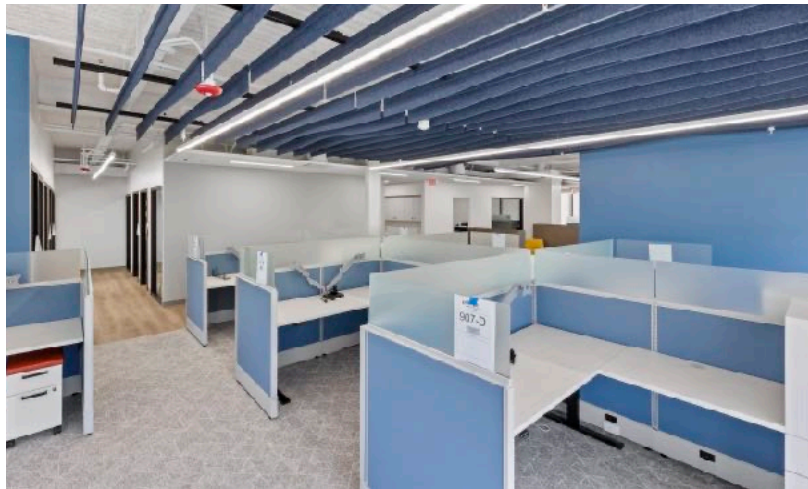
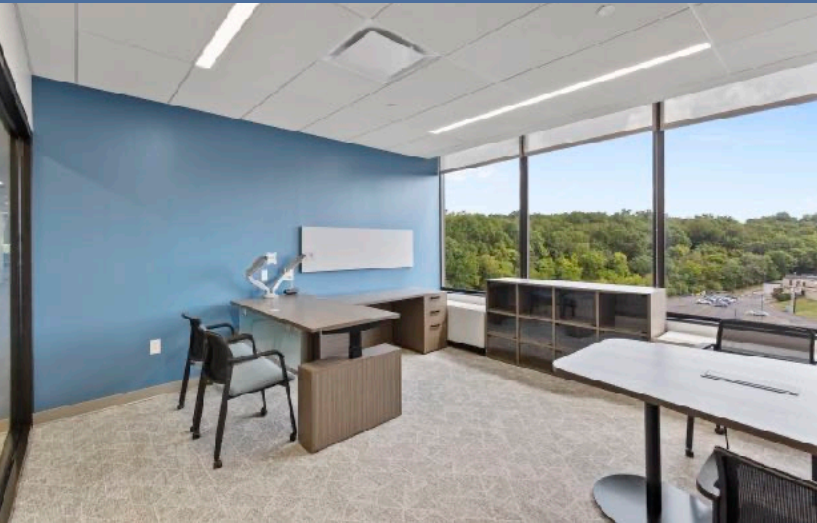
Martin Perry, CCIM
Senior Managing Director
O 412-281-0100
M 412-310-2315
martin.perry@nmrk.com

Kevin Spence
Managing Director
O 412-281-0100
M 412-303-0608
kevin.spence@nmrk.com

COCHRAN

— commons —

151 ROESSLER ROAD, PITTSBURGH, PA 15220



Manor Oak - 5 Mile Radius Demographics

WORK @ COCHRAN COMMONS

275,492

Population

\$73,384

Median Household
Income



Average
Household Size



Median Age

For information, please contact:



Martin Perry, CCIM
Senior Managing Director
O 412-281-0100
M 412-310-2315
martin.perry@nmrk.com



Kevin Spence
Managing Director
O 412-281-0100
M 412-303-0608
kevin.spence@nmrk.com

NEWMARK

COCHRAN

— commons —

151 ROESSLER ROAD, PITTSBURGH, PA 15220

Abundant Surface Parking



WORK @ COCHRAN COMMONS

- Space Available on Multiple Floors:
Between 2,000 SF and 16,000 SF
- Asking Rent \$19.50 including utilities and janitorial

For information, please contact:



Martin Perry, CCIM
Senior Managing Director
O 412-281-0100
M 412-310-2315
martin.perry@nmrk.com



Kevin Spence
Managing Director
O 412-281-0100
M 412-303-0608
kevin.spence@nmrk.com

NEWMARK

COCHRAN

— commons —

151 ROESSLER ROAD, PITTSBURGH, PA 15220

WORK, SHOP, DINE, LIVE @ COCHRAN COMMONS

1910 COCHRAN ROAD, PITTSBURGH, PA 15220

*A Mixed Use Community
in the Heart of the South Hills*



For information, please contact:



Martin Perry, CCIM
Senior Managing Director
O 412-281-0100
M 412-310-2315
martin.perry@nmrk.com



Kevin Spence
Managing Director
O 412-281-0100
M 412-303-0608
kevin.spence@nmrk.com

NEWMARK