

OFFICE/RETAIL AT COLUMBIA TOWN SQUARE

4,224 SF AVAILABLE

SUITE 101	1,400 SF
SUITE 201	1,412 SF
SUITE 301	1,412 SF



803 S MAIN ST / OVERVIEW



PROPERTY FEATURES

ADDRESS	803 S Main St, Columbia TN 37018
BUILDING SIZE	4,224 SF
SUITE 101	1,400 SF
SUITE 201	1,412 SF
SUITE 301	1,412 SF
USE	Office or Retail
RATE	\$28 NNN
REMODEL	2019

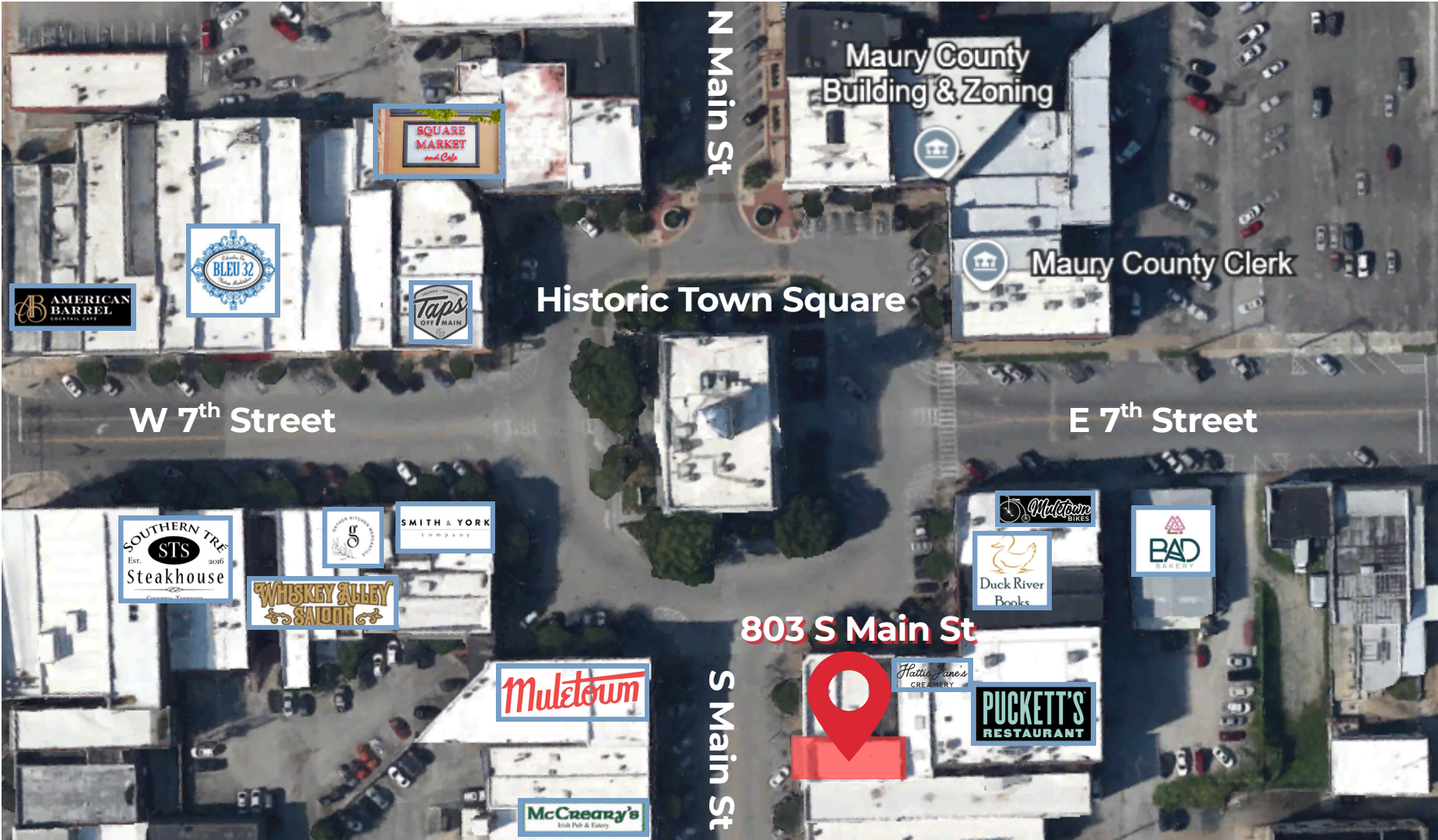
PROPERTY HIGHLIGHTS

- 4,224 SF beautifully restored three-story historic building with three separate combinable suites
- Fully remodeled in 2017 (new roof, HVAC, plumbing, interior)
- Open floor plan, exposed brick walls, soaring ceilings, abundant natural light
- Prominent Main Street frontage with high visibility and walkability
- Steps from Muletown Coffee, Southern Tre Steakhouse, Puckett's, and more

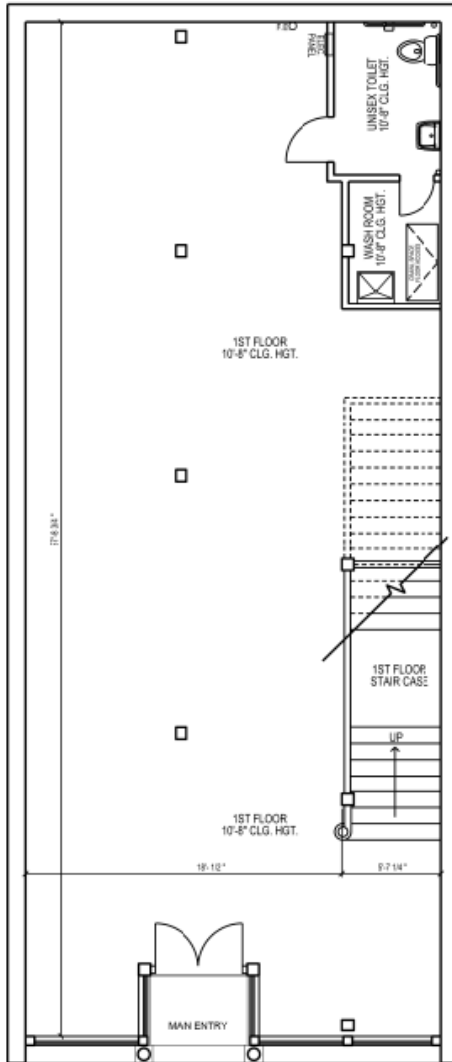
803 S MAIN ST / ADDITIONAL IMAGES



803 S MAIN ST / LOCATION



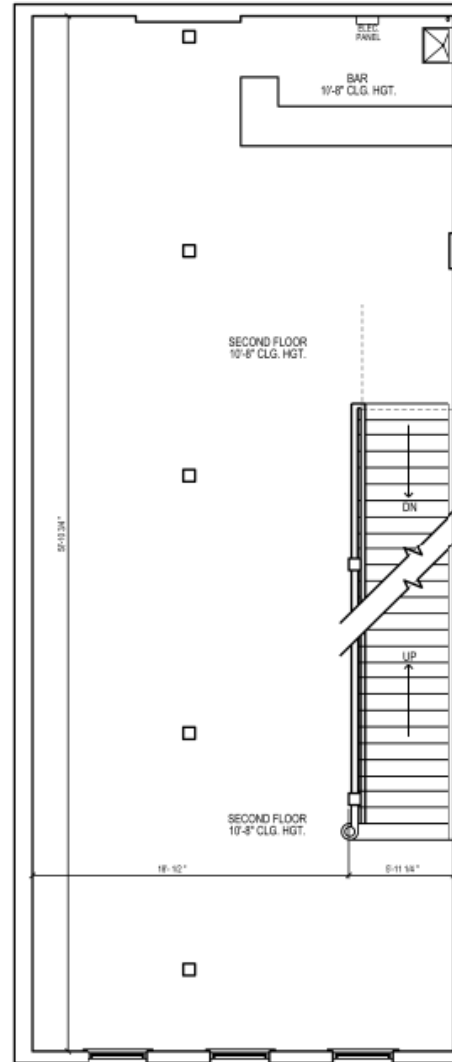
803 S MAIN ST / FLOOR PLAN



1400 S.F. FIRST FLOOR OVERALL
1151 S.F. FLOOR LEASABLE
249 S.F. COMMON AREA

1st Floor 1,400 SF

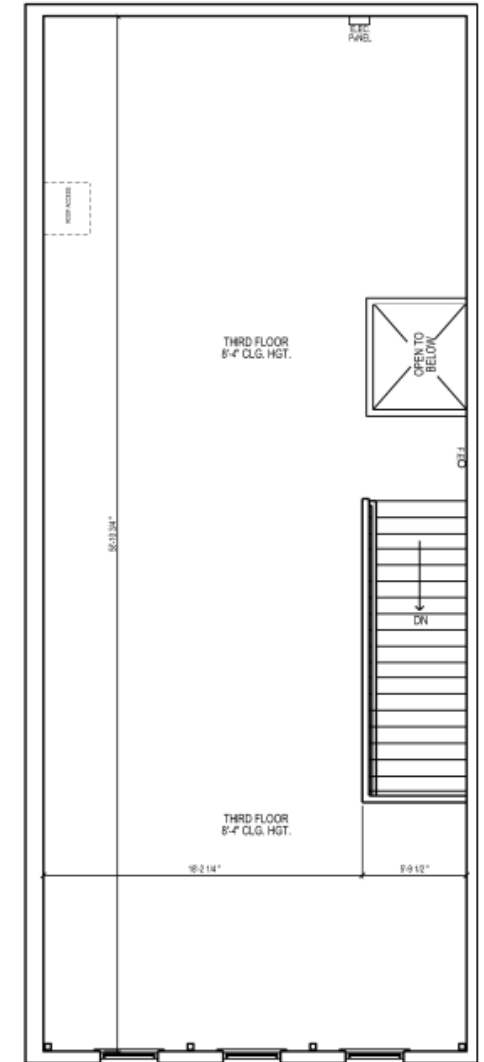
1 FIRST FLOOR
SCALE: 1/4"=1'-0"



1412 S.F. SECOND FLOOR OVERALL
1289 S.F. FLOOR LEASABLE
143 S.F. COMMON AREA

2nd Floor 1,412 SF

2 SECOND FLOOR
SCALE: 1/4"=1'-0"



1412 S.F. THIRD FLOOR OVERALL
1275 S.F. FLOOR LEASABLE
127 S.F. COMMON AREA

3rd Floor 1,412 SF

3 THIRD FLOOR
SCALE: 1/4"=1'-0"

FOR MORE INFORMATION:

THOMAS FREELAND

☎ (615) 870-9077

✉ thomas.freeland@freelandmanagement.com

ELIZABETH FREELAND

☎ (615) 943-9292

✉ elizabeth.freeland@freelandmanagement.com