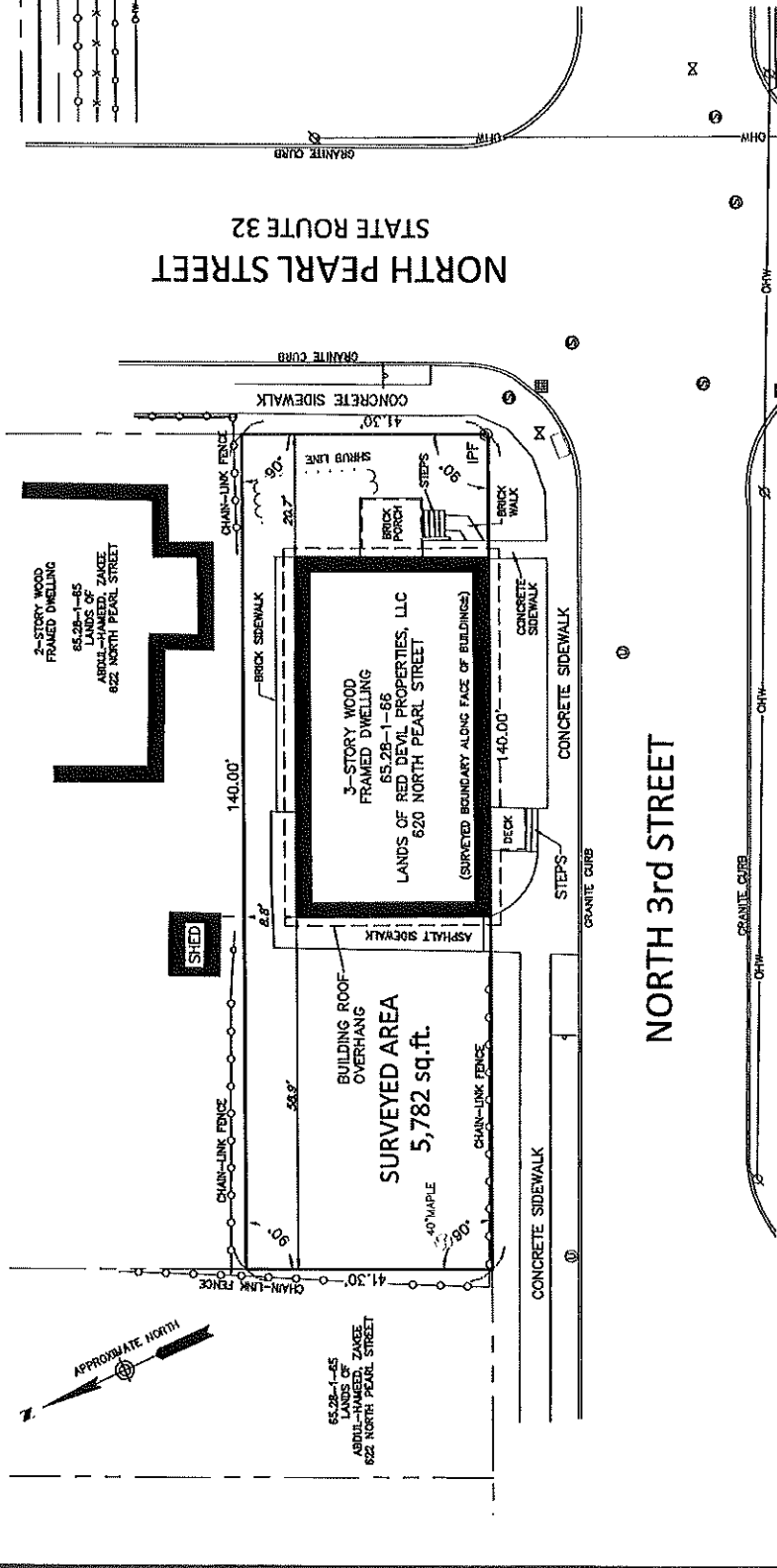
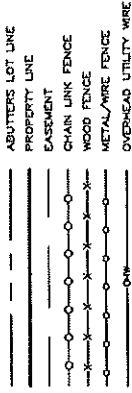


**INSIDE KEY**



**SURVEYED AREA**  
5,782 sq. ft.

**3-STORY WOOD  
FRAMED DWELLING**  
65.28-1-86  
LANDS OF  
RED DEVIL PROPERTIES, LLC  
620 NORTH PEARL STREET

**2-STORY WOOD  
FRAMED DWELLING**  
65.28-1-85  
LANDS OF  
RED DEVIL PROPERTIES, LLC  
622 NORTH PEARL STREET

**SURVEY CERTIFICATION**

THE CERTIFICATIONS SHOWN HEREON SIGNIFY THAT THIS PLAN WAS PREPARED IN ACCORDANCE WITH THE EXISTING CODE OF PRACTICE FOR LAND SURVEYING IN THE STATE OF ILLINOIS AND THAT THE SURVEYOR HAS CONDUCTED A VISUAL INSPECTION OF THE SURVEYED AREA AND HAS FOUND THAT THE INFORMATION CONTAINED HEREON IS TRUE AND CORRECT TO THE BEST OF HIS KNOWLEDGE AND BELIEF. THE SURVEYOR HAS CONDUCTED A VISUAL INSPECTION OF THE SURVEYED AREA AND HAS FOUND THAT THE INFORMATION CONTAINED HEREON IS TRUE AND CORRECT TO THE BEST OF HIS KNOWLEDGE AND BELIEF. THE SURVEYOR HAS CONDUCTED A VISUAL INSPECTION OF THE SURVEYED AREA AND HAS FOUND THAT THE INFORMATION CONTAINED HEREON IS TRUE AND CORRECT TO THE BEST OF HIS KNOWLEDGE AND BELIEF.

DECEMBER, 2014

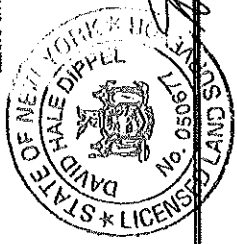
- RED DEVIL PROPERTIES, LLC
- SUNDARY FEDERAL CREDIT UNION
- CHICAGO TITLE INSURANCE SERVICES, LLC

**MAP REFERENCES**

1. MAP OF BUILDING LOTS OWNED BY WILLIAM P. VAN RESSLER, DATED IN THE COUNTY CLERK'S OFFICE ON MARCH 16, 1872 IN BOOK 17 AS MAP NO. 221.
2. MAP OF A SUBDIVISION OF A TRACT OF LAND BELONGING TO EDWARD V. CARR, DATED JULY 30, 1925 AND FILED IN THE ALBANY COUNTY CLERK'S OFFICE ON AUGUST 5, 1926.

**SURVEY NOTES**

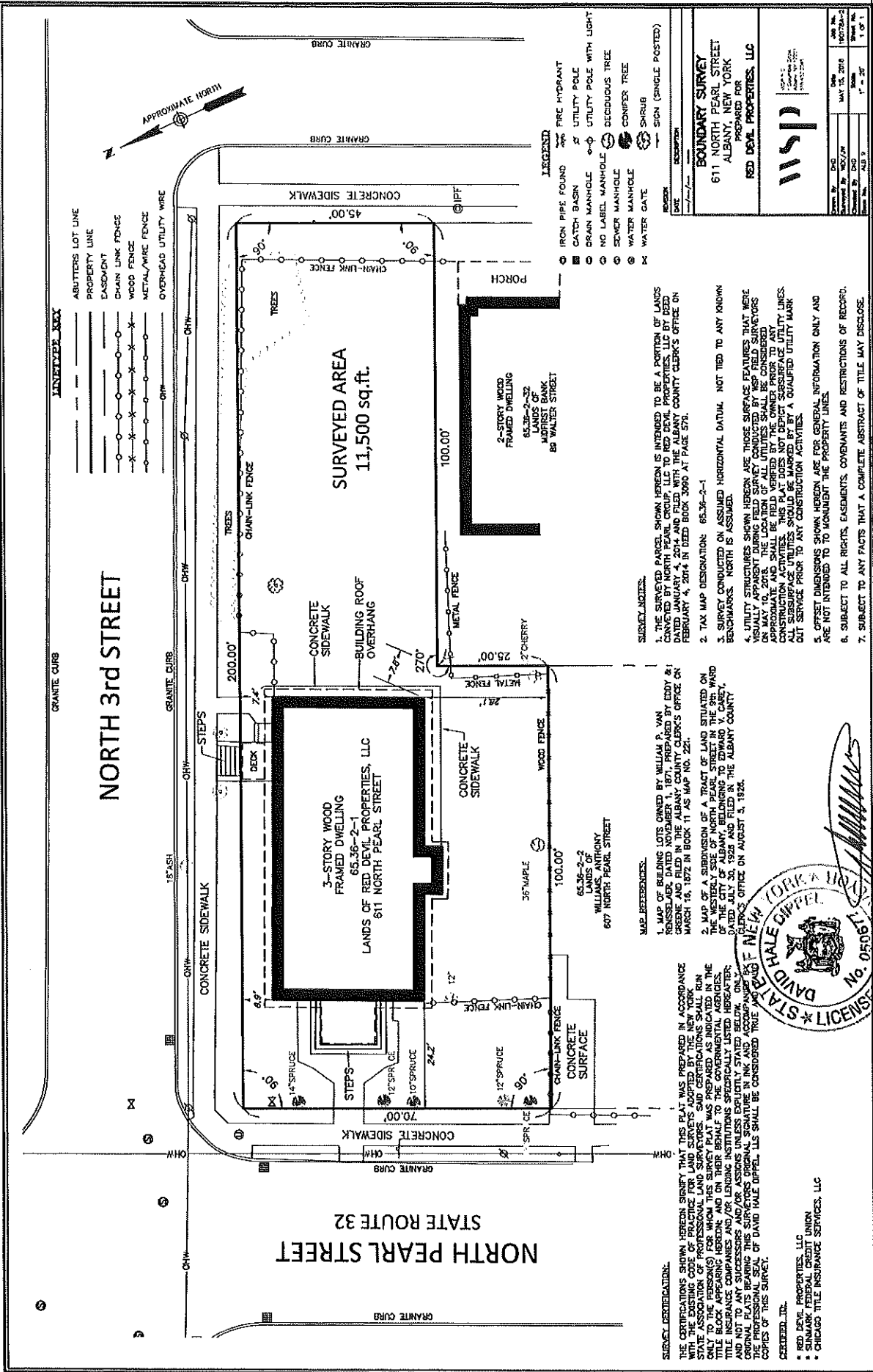
1. THE SURVEYED PARCELS SHOWN HEREON IS INTENDED TO BE A PORTION OF LANDS BELONGING TO RED DEVIL PROPERTIES, LLC BY DEED DATED JANUARY 4, 2014 AND FILED WITH THE ALBANY COUNTY CLERK'S OFFICE ON FEBRUARY 4, 2014 IN DEED BOOK 3090 AT PAGE 579.
2. TAX MAP DESIGNATION: 65.28-1-86
3. SURVEY CONDUCTED ON ASSUMED HORIZONTAL DATUM. NOT TIED TO ANY KNOWN BENCHMARKS. NORTH IS ASSUMED.
4. UTILITY STRUCTURES SHOWN HEREON ARE THOSE SURFACE FEATURES THAT WERE VISUALLY APPARENT DURING FIELD SURVEY CONDUCTED BY RED DEVIL PROPERTIES, LLC. APPROXIMATE AND SHALL BE FIELD VERIFIED BY THE OWNER PRIOR TO ANY CONSTRUCTION ACTIVITIES. THIS PLAN DOES NOT DEPICT SUBSURFACE UTILITY LINES. ALL SUBSURFACE UTILITIES SHOULD BE MARKED BY A QUALIFIED UTILITY MARK-OUT SERVICE PRIOR TO ANY CONSTRUCTION ACTIVITIES.
5. OFFSET DIMENSIONS SHOWN HEREON ARE FOR GENERAL INFORMATION ONLY AND ARE NOT INTENDED TO MONUMENT THE PROPERTY LINES.
6. SUBJECT TO ALL RIGHTS, EASEMENTS, COVENANTS AND RESTRICTIONS OF RECORD.
7. SUBJECT TO ANY FACTS THAT A COMPLETE ABSTRACT OF TITLE MAY DISCLOSE.



**BOUNDARY SURVEY**  
620 NORTH PEARL STREET  
ALBANY, NEW YORK



Drawn By	DSC	Date	MAY 13, 2018
Checked By	MSJ/WH	Scale	1" = 20'
Scale	1" = 20'	Sheet No.	1 OF 1



- LEGEND**
- IRON PIPE FOUND
  - CATCH BASIN
  - DRAIN MANHOLE
  - NO LABEL MANHOLE
  - SEWER MANHOLE
  - WATER MANHOLE
  - WATER GATE
  - FIRE HYDRANT
  - UTILITY POLE
  - UTILITY POLE WITH LIGHT
  - DECIDUOUS TREE
  - CONIFER TREE
  - SHRUB
  - SIGN (SINGLE POSTED)

- LEGEND**
- ABUTTERS LOT LINE
  - PROPERTY LINE
  - EASEMENT
  - CHAIN LINK FENCE
  - WOOD FENCE
  - METAL/WIRE FENCE
  - OVERHEAD UTILITY WIRE

**BOUNDARY SURVEY**  
611 NORTH PEARL STREET  
ALBANY, NEW YORK  
PREPARED FOR  
**RED DEVIL PROPERTIES, LLC**

DATE	NOV 10, 2018
BY	DAVID HALE DWIFF
FOR	RED DEVIL PROPERTIES, LLC
SCALE	1" = 20'

**SURVEY NOTES:**

- THE SURVEYED PARCEL SHOWN HEREON IS INTENDED TO BE A PORTION OF LANDS IN VICTORIA NORTH 74-2-1-1, 1871, PREPARED BY EDDY & MARSHALL, SURVEYORS, AND FILED WITH THE ALBANY COUNTY CLERK'S OFFICE ON MARCH 14, 1872 IN BOOK 11 AS MAP NO. 23.
- MAP OF A SUBDIVISION OF A TRACT OF LAND SITUATED ON NORTH PEARL STREET, ALBANY, NEW YORK, BELONGING TO EDWARD V. CASE, DATED JULY 30, 1928 AND FILED IN THE ALBANY COUNTY CLERK'S OFFICE ON AUGUST 3, 1928.
- MAP OF BUILDING LOTS OWNED BY WILLIAM P. VAN WALKER, DATED NOVEMBER 1, 1871, PREPARED BY EDDY & MARSHALL, SURVEYORS, AND FILED WITH THE ALBANY COUNTY CLERK'S OFFICE ON MARCH 14, 1872 IN BOOK 11 AS MAP NO. 23.
- MAP OF A SUBDIVISION OF A TRACT OF LAND SITUATED ON NORTH PEARL STREET, ALBANY, NEW YORK, BELONGING TO EDWARD V. CASE, DATED JULY 30, 1928 AND FILED IN THE ALBANY COUNTY CLERK'S OFFICE ON AUGUST 3, 1928.
- UTILITY STRUCTURES SHOWN HEREON ARE THOSE SURFACE FEATURES THAT WERE VISUALLY APPARENT DURING FIELD SURVEY CONDUCTED BY MSP FIELD SURVEYORS ON MAY 10, 2018. THE LOCATION OF ALL UTILITIES SHALL BE CONSIDERED APPROXIMATE AND SHALL BE FIELD VERIFIED BY THE SURVEYOR. ALL SUBSURFACE UTILITIES SHOULD BE MARKED BY A QUALIFIED UTILITY MARK-OUT SERVICE PRIOR TO ANY CONSTRUCTION ACTIVITIES.
- OFFSET DIMENSIONS SHOWN HEREON ARE FOR GENERAL INFORMATION ONLY AND ARE NOT INTENDED TO MONUMENT THE PROPERTY LINES.
- SUBJECT TO ALL RIGHTS, EASEMENTS, COVENANTS AND RESTRICTIONS OF RECORD, SUBJECT TO ANY FACTS THAT A COMPLETE ABSTRACT OF TITLE MAY DISCLOSE.

**MAR. REFERENCES:**

- MAP OF BUILDING LOTS OWNED BY WILLIAM P. VAN WALKER, DATED NOVEMBER 1, 1871, PREPARED BY EDDY & MARSHALL, SURVEYORS, AND FILED WITH THE ALBANY COUNTY CLERK'S OFFICE ON MARCH 14, 1872 IN BOOK 11 AS MAP NO. 23.
- MAP OF A SUBDIVISION OF A TRACT OF LAND SITUATED ON NORTH PEARL STREET, ALBANY, NEW YORK, BELONGING TO EDWARD V. CASE, DATED JULY 30, 1928 AND FILED IN THE ALBANY COUNTY CLERK'S OFFICE ON AUGUST 3, 1928.

**SUBJECT CERTIFICATION:**

THE CERTIFICATIONS SHOWN HEREON SIGNIFY THAT THIS PLAT WAS PREPARED IN ACCORDANCE WITH THE EXISTING CODE OF PRACTICE FOR SURVEYORS AND CERTIFICATIONS SHALL BE IN FULL COMPLIANCE WITH THE EXISTING CODE OF PRACTICE FOR SURVEYORS AND CERTIFICATIONS SHALL BE ONLY TO THE PERSON(S) FOR WHOM THIS SURVEY PLAT WAS PREPARED AS INDICATED IN THE TITLE BLOCK APPEARING HEREON; AND ON THEIR BEHALF TO THE GOVERNMENTAL AGENCIES, TITLE INSURANCE COMPANIES AND/OR LENDING INSTITUTIONS SPECIFICALLY LISTED HEREON; AND NOT TO ANY SUCCESSORS AND/OR ASSIGNS IN WHOLE OR IN PART OF THE SURVEYOR, THE PROFESSIONAL SEAL OF DAVID HALE DWIFF, L.L.S. SHALL BE CONSIDERED TRUE AND CORRECT.

DAVID HALE DWIFF, L.L.S.

- RED DEVIL PROPERTIES, LLC
- SUNMARK FEDERAL CREDIT UNION
- CHICAGO TITLE INSURANCE SERVICES, LLC

