



±1.1 AC RED BLUFF, CA

2650 Main St., Red Bluff, CA 96080

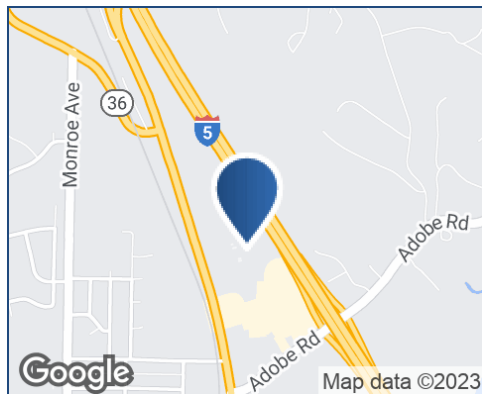
Property Summary



DAILY TRAFFIC CONDITIONS

TRAFFIC COUNT	DAILY TRAFFIC
COUNT	9,932
STREET	Main St.

* Figures shown represent estimates



DEMOGRAPHICS - 2023

DEMOGRAPHICS	3 MILE	5 MILE	10 MILE
Estimated Population	21,521	25,493	31,374
Average HH Income	\$105,133	\$107,593	\$110,815
Estimated Households	8,601	10,160	12,462

PROPERTY HIGHLIGHTS

- ±1.1 AC Land Parcel adjacent to the Home Depot in Red Bluff, CA
- Easy access off Adobe Rd. from Interstate 5
- The parcel is visible from Interstate 5
- Just across Main St., to the west, is a large residential neighborhood



MARK MILLER
626.399.1140
MMiller@retail-pa.com
CalDRE #01130250

CHRIS CAMPBELL
916.446.8760
chris.campbell@cbre.com
CalDRE #01204114

Retail Property Advisors // 626.399.1140 // 225 South Lake Ave. // Suite 300, Pasadena, CA 91101 // Retail-PA.com

ATLANTA // TAMPA // PASADENA, CA // AUBURN // SARASOTA // BALTIMORE

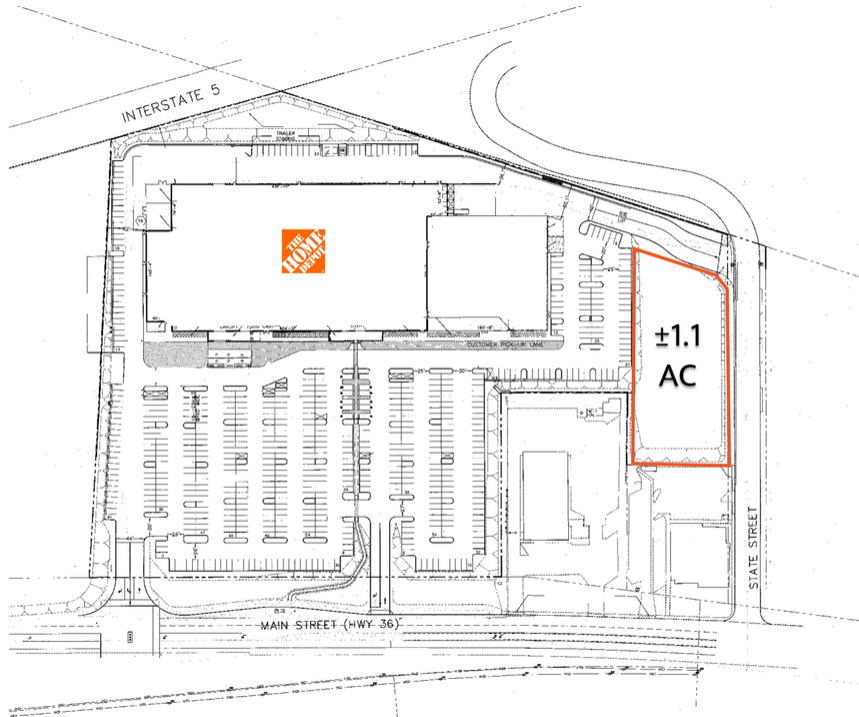
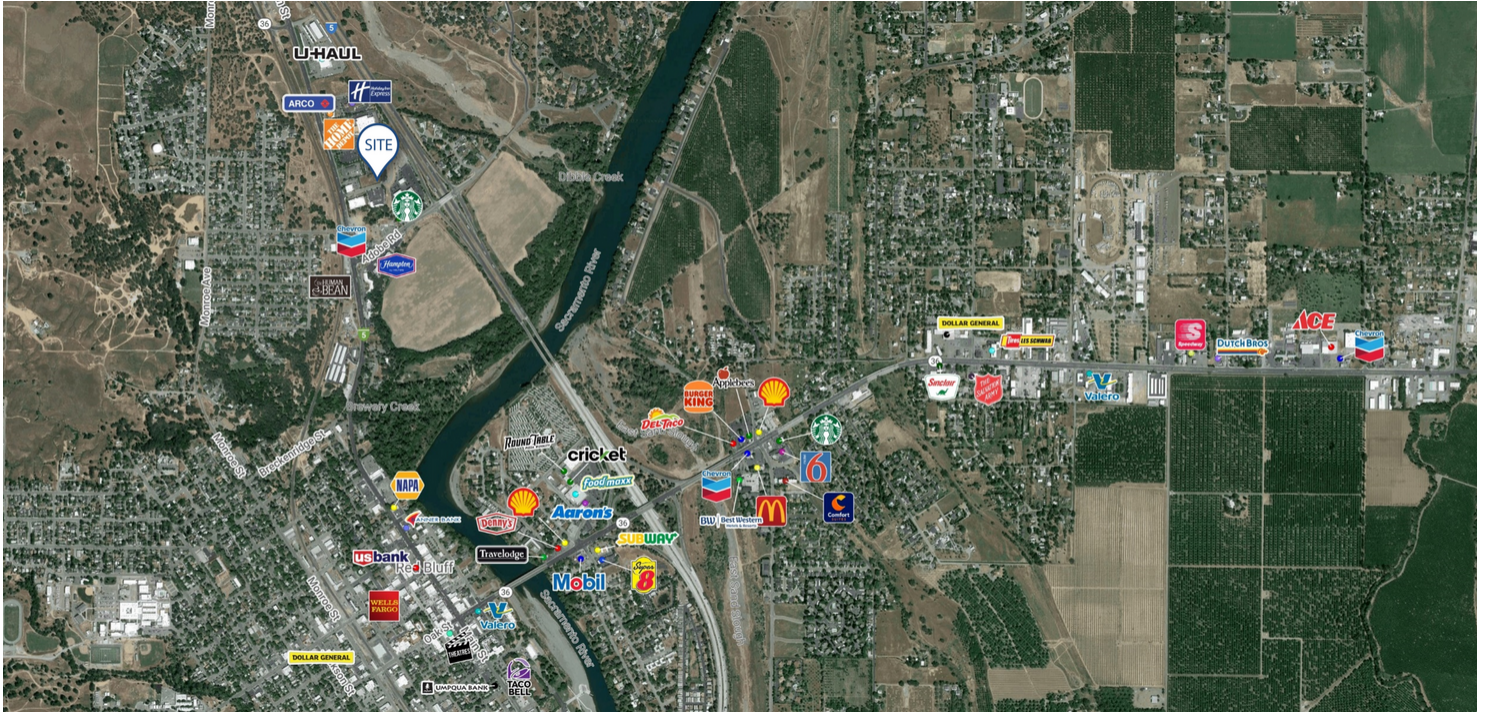
No warranty or representation, expressed or implied, is made as to the accuracy of the information contained herein, and same is submitted subject to errors, omissions, change of price, rental or other conditions, withdrawal without notice, any special list conditions imposed by our Principals.



±1.1 AC RED BLUFF, CA

2650 Main St., Red Bluff, CA 96080

Location Maps



MARK MILLER

626.399.1140

MMiller@retail-pa.com

CalDRE #01130250

CHRIS CAMPBELL

916.446.8760

chris.campbell@cbre.com

CalDRE #01204114

Retail Property Advisors // 626.399.1140 // 225 South Lake Ave. // Suite 300, Pasadena, CA 91101 // Retail-PA.com

ATLANTA // TAMPA // PASADENA, CA // AUBURN // SARASOTA // BALTIMORE

No warranty or representation, expressed or implied, is made as to the accuracy of the information contained herein, and same is submitted subject to errors, omissions, change of price, rental or other conditions, withdrawal without notice, any special list conditions imposed by our Principals.