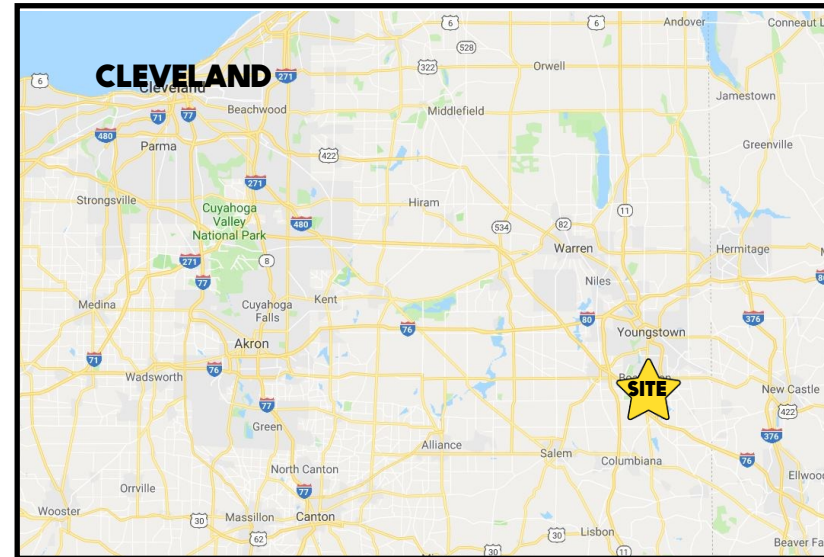


## LOCATION

8387 Tod Ave, Boardman, OH 44512



## TRAFFIC

McClurg Rd = 6,997 VPD

## HIGHLIGHTS

- 2 story funeral home / banquet hall
- Finished lower level w/ full kitchen (all equipment stays)
- Each floor: 6,996 SF = 13,992 total SF
- Handicap accessible with elevator
- Located by Mercy Hospital / YMCA
- Can be repurposed for office, medical, etc.

Office: 330.757.4889 | Fax: 330.294.5622 | 3768 Boardman Canfield Rd, Canfield, OH 44406

## CONTACT

**DON THOMAS**

501.269.3827

dthomas@platzrealtygroup.com





Office: 330.757.4889 | Fax: 330.294.5622 | 3768 Boardman Canfield Rd, Canfield, OH 44406

**[www.PLATZREALTYGROUP.com](http://www.PLATZREALTYGROUP.com)**

The information presented was obtained from sources believed to be true and reliable. The Platz Realty Group makes no warranties or guarantees to the accuracy of the information.



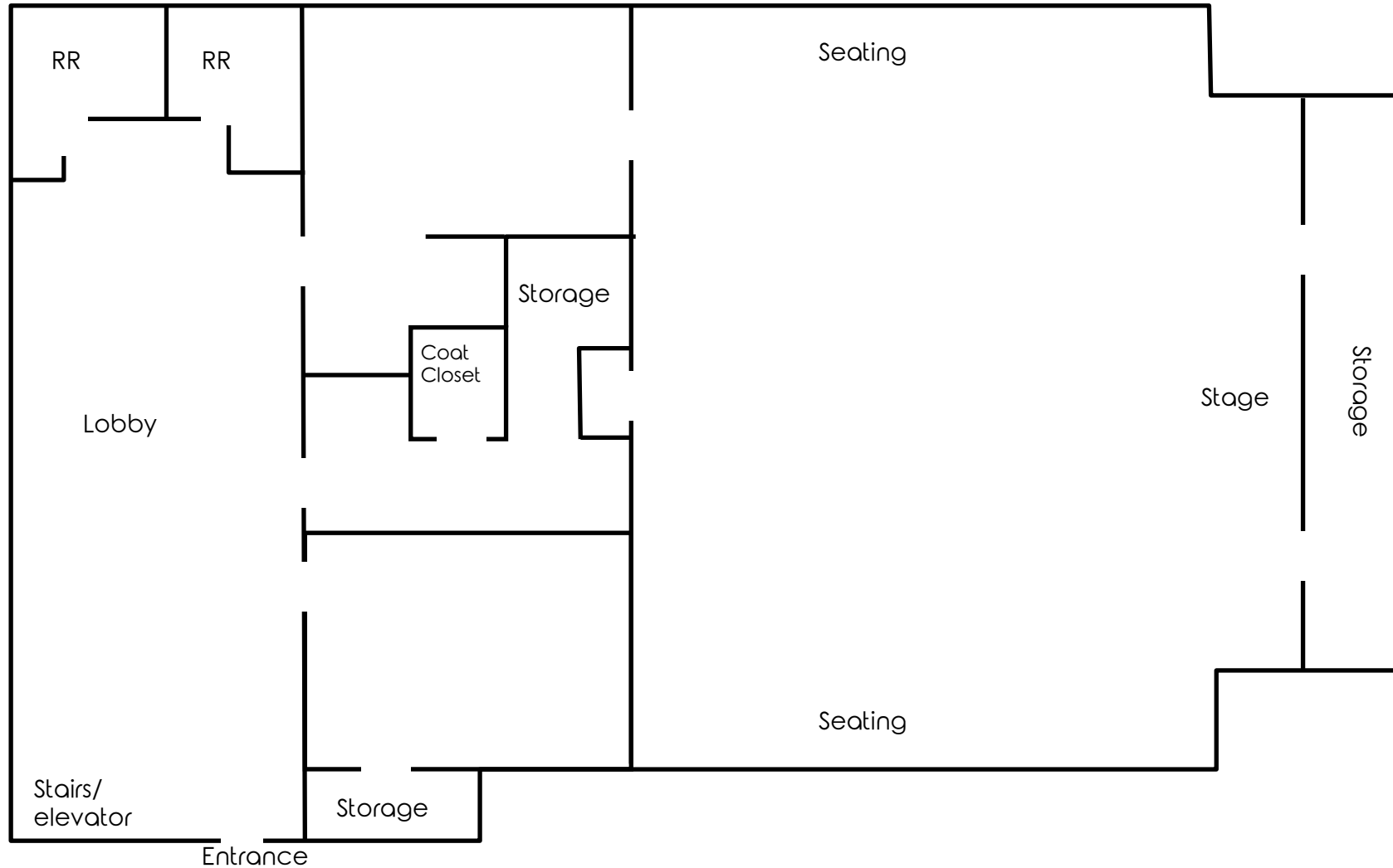


Office: 330.757.4889 | Fax: 330.294.5622 | 3768 Boardman Canfield Rd, Canfield, OH 44406

**[www.PLATZREALTYGROUP.com](http://www.PLATZREALTYGROUP.com)**

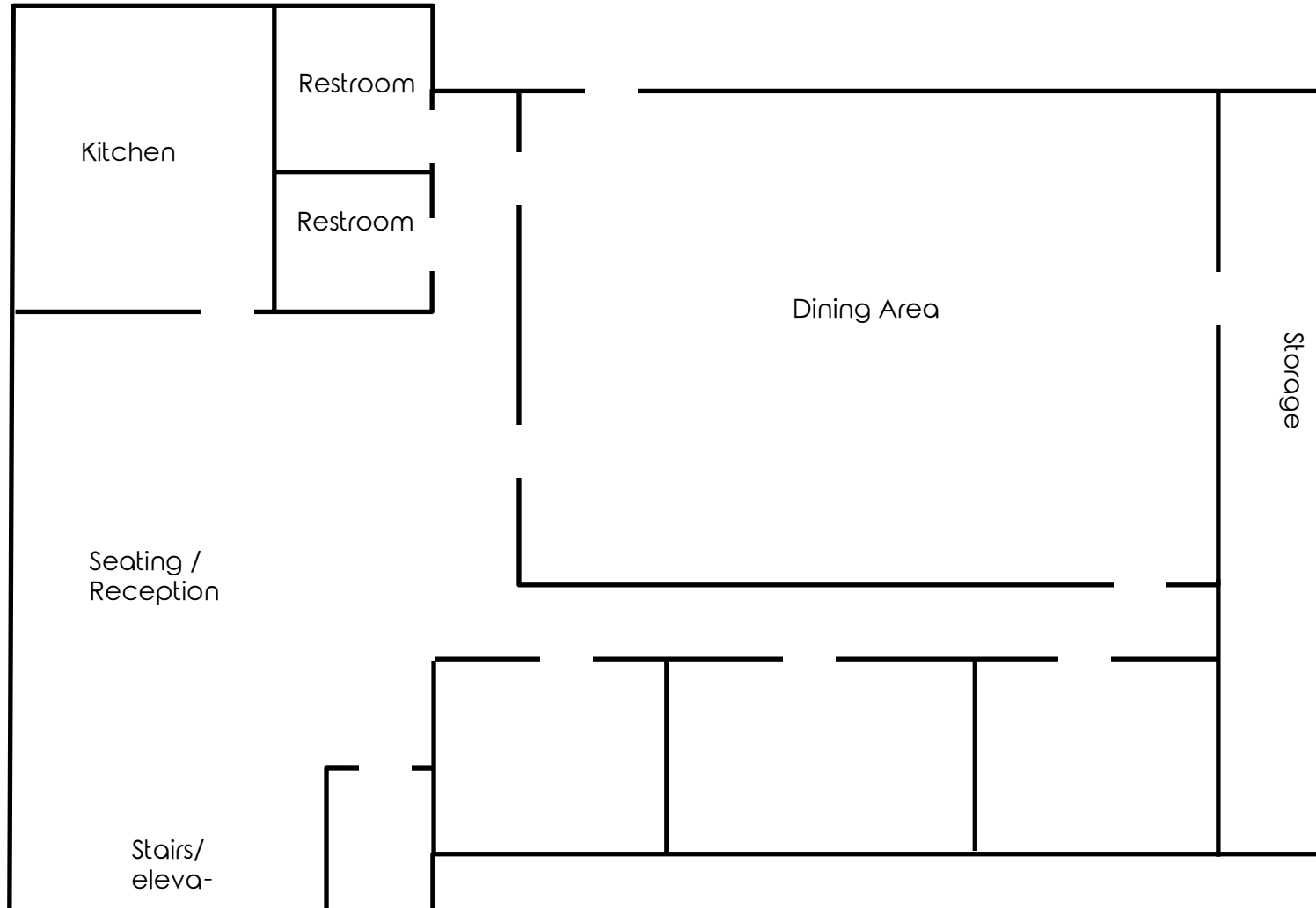
The information presented was obtained from sources believed to be true and reliable. The Platz Realty Group makes no warranties or guarantees to the accuracy of the information.

First Floor



Office: 330.757.4889 | Fax: 330.294.5622 | 3768 Boardman Canfield Rd, Canfield, OH 44406

Lower Level



Office: 330.757.4889 | Fax: 330.294.5622 | 3768 Boardman Canfield Rd, Canfield, OH 44406





Office: 330.757.4889 | Fax: 330.294.5622 | 3768 Boardman Canfield Rd, Canfield, OH 44406

**www.PLATZREALTYGROUP.com**



