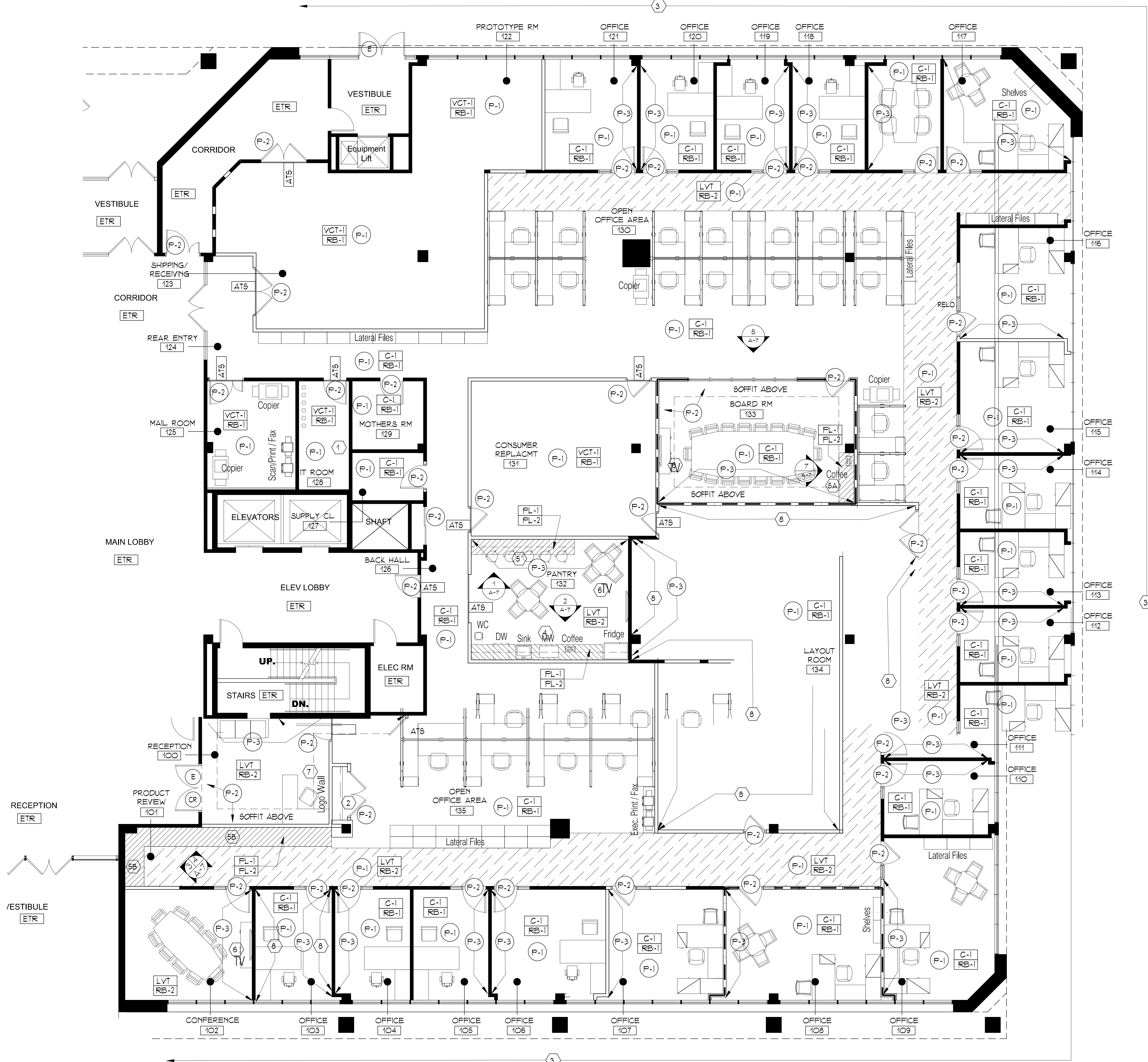


THE GENERAL NOTES INDICATED ON THIS DRAWING ARE A SAFEGUARD ONLY AND SHOULD ONLY BE USED WHEN THEY APPLY TO THIS WORK. THEY MAY OR MAY NOT BE NECESSARY FOR THIS OR FUTURE WORK.



A **1st Floor Finish Plan Right Side**
 SCALE: 1/8" = 1'-0"
15,892 SF

General Notes:

THIS DESIGN IS PROTECTED BY A COPYRIGHT ANY USE OR REPRODUCTION OF THIS MATERIAL MUST BE WITH THE EXPRESSED WRITTEN CONSENT OF GSM ARCHITECTS LLC.

Engineer

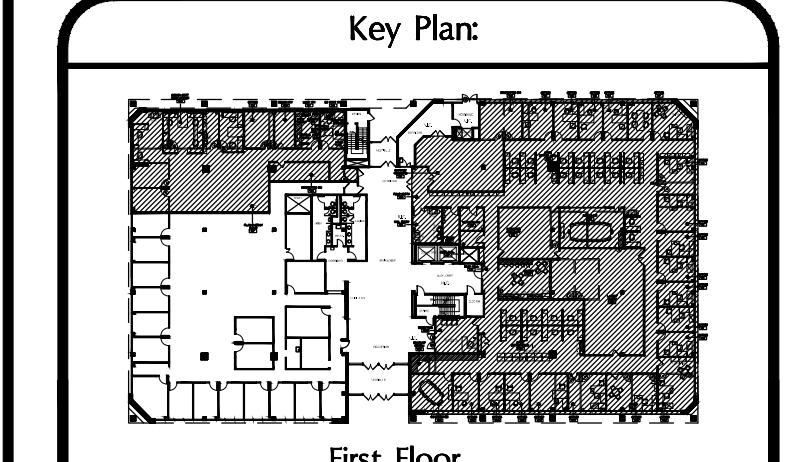
enerdyne consulting services, LLC
 680 HEACOCK RD, SUITE 103
 YARDLEY, PA 19067
 PHONE: 215-321-9400
 FAX: 215-321-9415
 www.enerdynelc.com

Tenant

CAMBRIDGE
 UNFORGETTABLE STYLE • UNBELIEVABLE VALUE™

Owner/Developer

VISION
 Real Estate Partners



Drawing Revisions

No.	Date	Description
1	08/14/18	Issued For Demolition Permit

Architect:

GSM
 Architecture Services
 (NJ) License #13715

SCOTT MONRO ARCHITECT
 170 Kimmelon Road, Suite C
 Kimmelon, New Jersey 07405
 (973) 283-0931
 Email: smonro@gsmarchitects.com

Project Name & Address:

Cambridge Silversmiths
 200 Changebridge Road
 Montville, New Jersey
 First Floor

Project Number: 18-041	Sheet Number: A-5
Date: August 8, 2018	A-5
Drawn By: gsm	
Scale: As Noted	
Sheet 5 of 7	