

For Sale

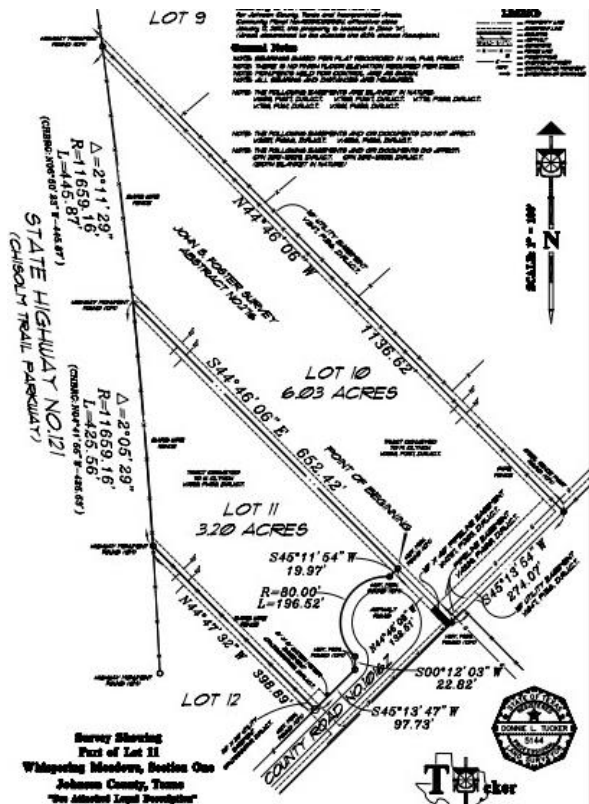


8125 CR 1016Z, Burleson (LAND 9.25 ac) \$ 899,000





View from Chisolm Trail Pkwy



2 tracts totaling 9.25 acres (6.0705 ac and 3.1795 ac). Seller willing to subdivide into 2 tracts... see the attached surveys. Make an offer per tract. Some Fencing... concrete cul-de-sac to access this property. Just West of the TCU Equestrian Facility. Drive south of Ft. Worth on Chisolm Trail Pkwy... exit FM 1902 going South and going North, exit FM 917 to access CR 1016 Z

David A Cook
 (817) 475-8984 text messages welcomed

The information contained herein is furnished by the owner to the best of his knowledge but is subject to verification by the purchaser. The sale offering is subject to errors, omissions, and change of price, prior to sale or without notice.