



For lease

1717 South Orange Avenue
Suite 102 - 3,550+/- RSF available

Building Highlights

Located directly across South Orange Avenue from Orlando Health's main campus, this 3-story, 47,000+/- RSF class A, Medical Office Building is a true landmark within the SoDo neighborhood of Downtown Orlando. This building is set to be transformed with a planned \$2.5 million exterior and common area renovation, that will also include an updating of the parking area to include the addition of new unreserved and handicap parking spaces to the current parking count. Come join our other tenants Nemours and Orlando Health at this premier MOB location!



Medical Office Space

Suite 102

Coveted Ground Floor Space

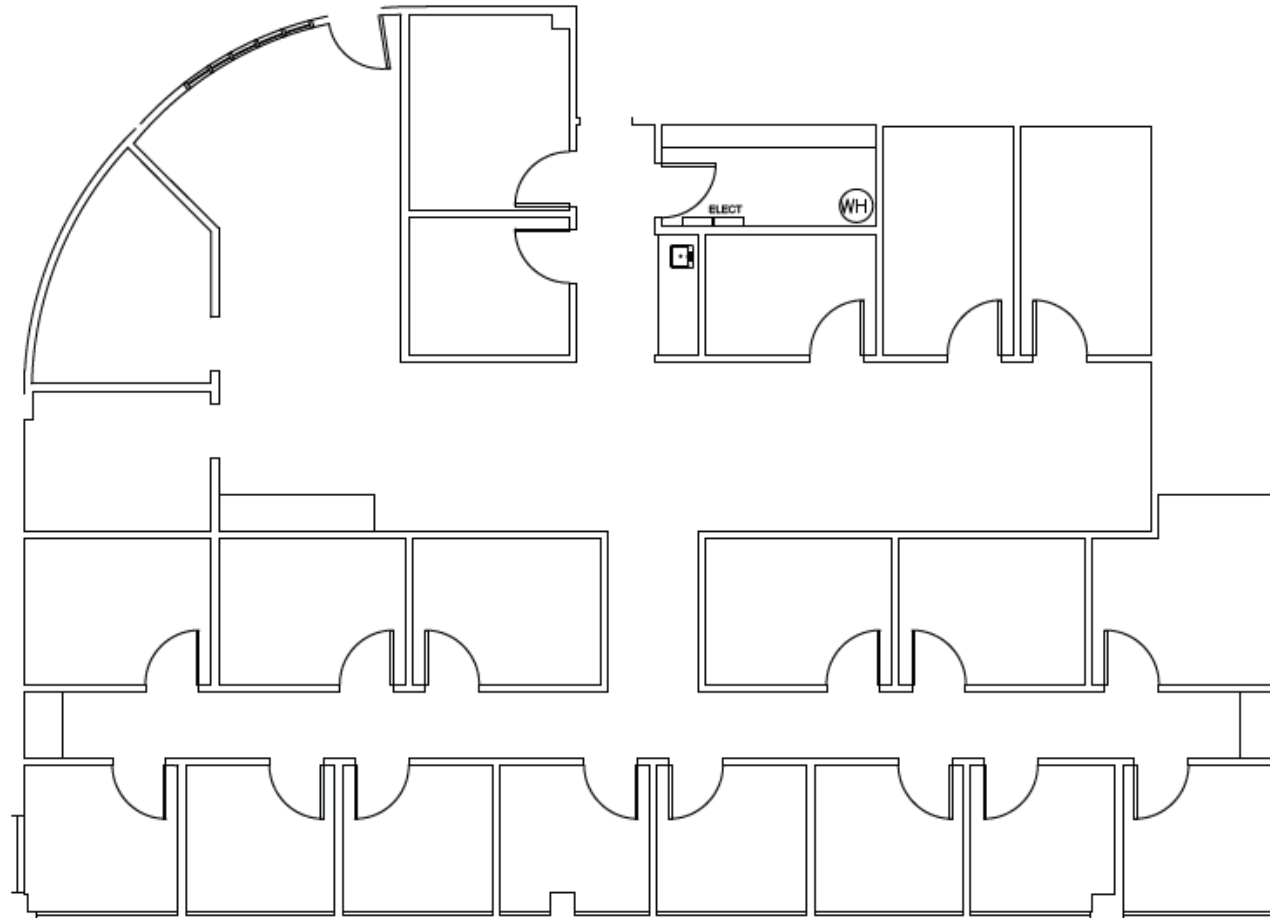
3,550+/- RSF Available

Lease Rate: \$29.75 per SF, NNN

Designated Monument Signage
on South Orange Avenue
Available



Floorplan - Suite 102



[CLICK HERE TO VIEW MATTERPORT](#)



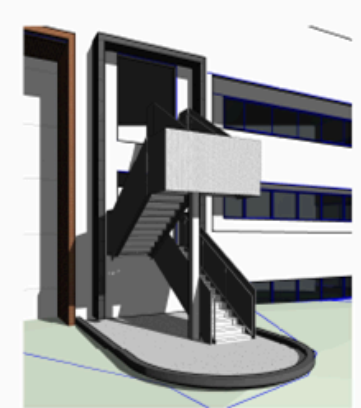
Future Exterior Renditions



1 3D VIEW - ATRIUM



2 3D VIEW - COVERED DROP-OFF



3 3D VIEW - SOUTH SIDE STAIRCASE



Jamie Barati

Senior Vice President

jamie.barati@jll.com

+1 407 930 1803

John Worrell

Senior Vice President

john.worrell@jll.com

+1 407 930 1809