

OF SURVEY OF

LOT 3, CONCESSION 7

THE TOWNSHIP OF GRANTHAM,
LINCOLN, NOW IN THE

NIAGARA-ON-THE-LAKE

MUNICIPALITY OF NIAGARA

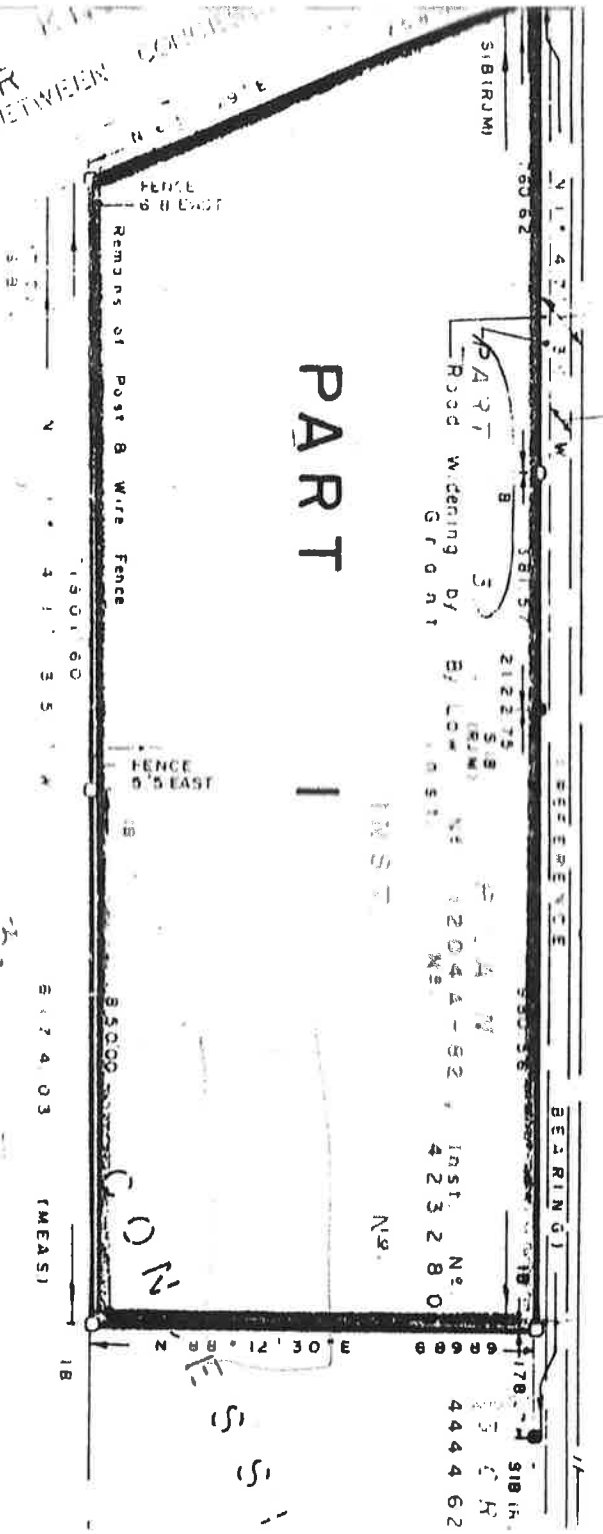
1 INCH = 300 FEET

A. MASCOE
SURVEYOR



LOCALLY KNOWN AS
IRVINE ROAD BETWEEN LOTS 2 & 3

NORTHEAST CORNER
LOT 3, CONCESSION 7



PART 1

LOCALLY KNOWN AS
EAST CHESTER
ORIGINAL ROAD ALLOWANCE BETWEEN LOTS 2 & 3

LOT 3
TOWNSHIP OF

OF