

FOR LEASE

**CONTACT: BRIAN GODIN or
BROOK LADRIGAN**

E-mail: Bgodinpb@gmail.com

E-mail: Bladrigan.gpb@gmail.com

www.GodinPropertyBrokers.com

Phone: 203-577-2277 Fax: 203-577-2100

850 Straits Turnpike, Suite 204

Middlebury, CT, 06762



**2,025 +/- S/F Office/Warehouse Condominium
Ideal for Light Manufacturing/Contractors
Clean Space - Great Parking
Easy Access to I-91
Lease Price: \$12.00 PSF + Utilities**

**222 Elm Street
Unit 4
North Haven, CT 06473**



PROPERTY DATA FORM

PROPERTY ADDRESS		222 Elm Street, Unit 4	
CITY, STATE		North Haven, CT 06473	
BUILDING INFO	Garage	MECHANICAL EQUIP.	
Total S/F	2,025 +/-	Air Conditioning	Central
Number of floors	1	Sprinkler / Type	N/A
Avail S/F	2,025 +/-	Type of Heat	FHA / Natural Gas
Office Space	1,500 +/-	OTHER	
Column Space	525 +/-	Acres	.0000
Ext. Construction	Masonry	Zoning	IL80
Total/Avail Drive-in	10' x 14'	Parking	Ample
Roof	Tar & Gravel	State Route / Distance To...	
Ceiling Height	16'	TAXES	
Date Built	1987	Assessment	
UTILITIES	TENANT TO	Mill Rate	
Sewer	City	Appraised	
Water	City	Taxes	
Gas/Oil	Gas	TERMS	
Electrical	150 amps/ 3 phase	Lease	\$12.00 PSF + Utilities

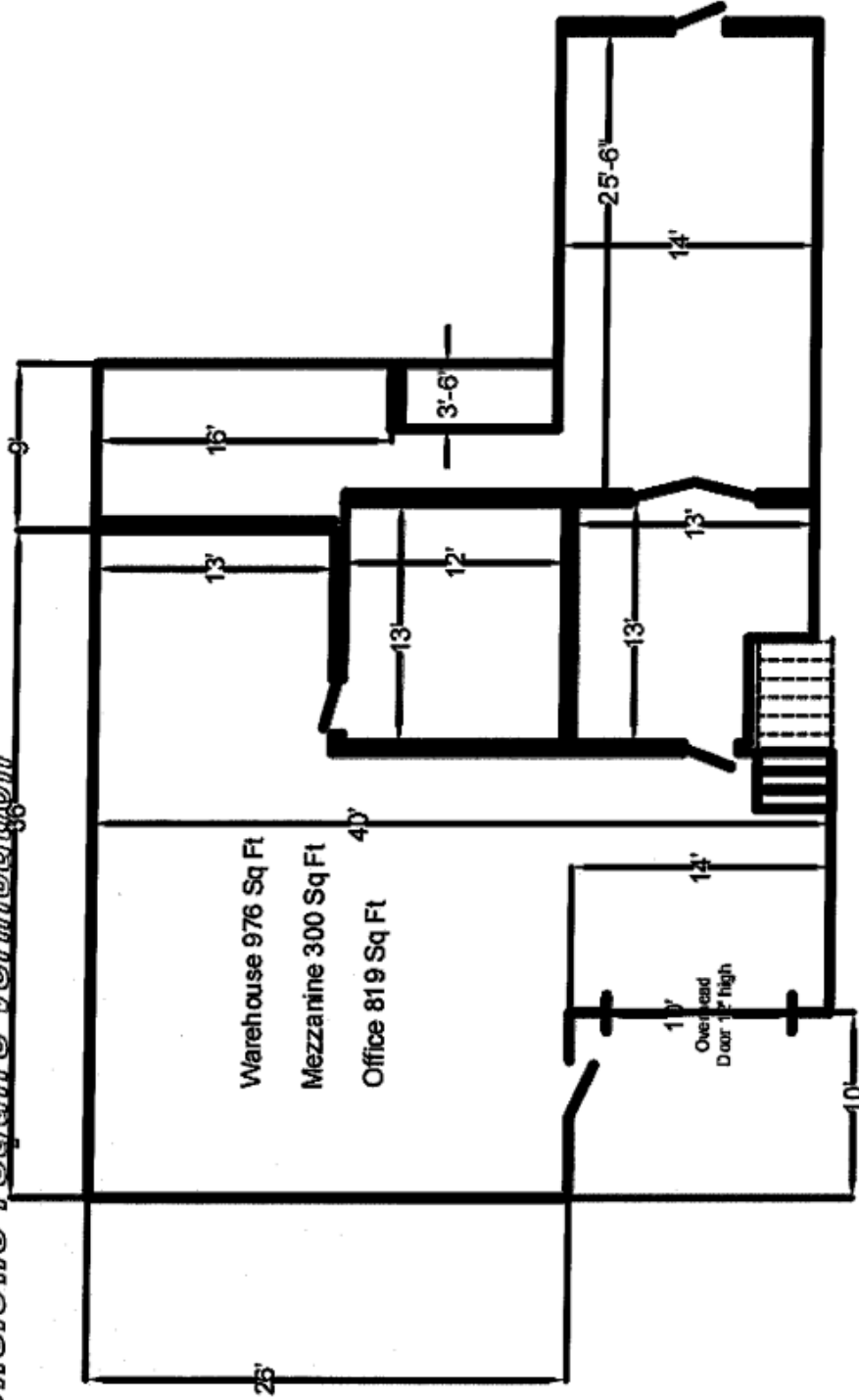


All information furnished is from sources deemed reliable and is submitted subject to errors, omissions, change of other terms of conditions, prior sale, lease or financing or withdrawal-all without notice. No representation is made or implied by Godin Property Brokers, LLC or its associates as to the accuracy of the information submitted herein.

REVISIONS		
REV	DESCRIPTION	DATE

Preliminary

Dimensions require verification



NOTES
1.

222 Elm Street #4		Raines Brothers 420 Sharon Dr., Cheshire, Connecticut 06410	
Floor Plan			
TOLERANCES (EXCEPT AS NOTED)	DECIMAL ±.010	FRACTIONAL ± 1/64	ANGULAR ± 1/2 DEG
REV	DATE	BY	DATE
	8/28/24	RJR	