

Plaza 1800

Retail Space

1800 NW 86th St
Clive, IA 50325
www.cbre.com/desmoines

Small shop space available along 86th street in Clive. This community shopping center benefits from a dedicated stoplight on the south end of the center and shared access to Alice Avenue via the adjacent Krispy Kreme.

Available Space

- + Suite 7
 - 1,400 SF
 - Available 9/1/24
- + Former employment office
- + Base Rent: \$10.00/SF NNN
- + OPEX: \$6.22/SF
- + Tenants include Pally's Bar & Grill, Lara's Bakery, Cricket Wireless, Fireplace Center, Groomers, Inc., and Paleteria Mexico De Mis Sabores.
- + Traffic Counts on 86th Street - 27,500 vpd
- + Monument Signage
- + Adjacent to Bike World



Plaza 1800

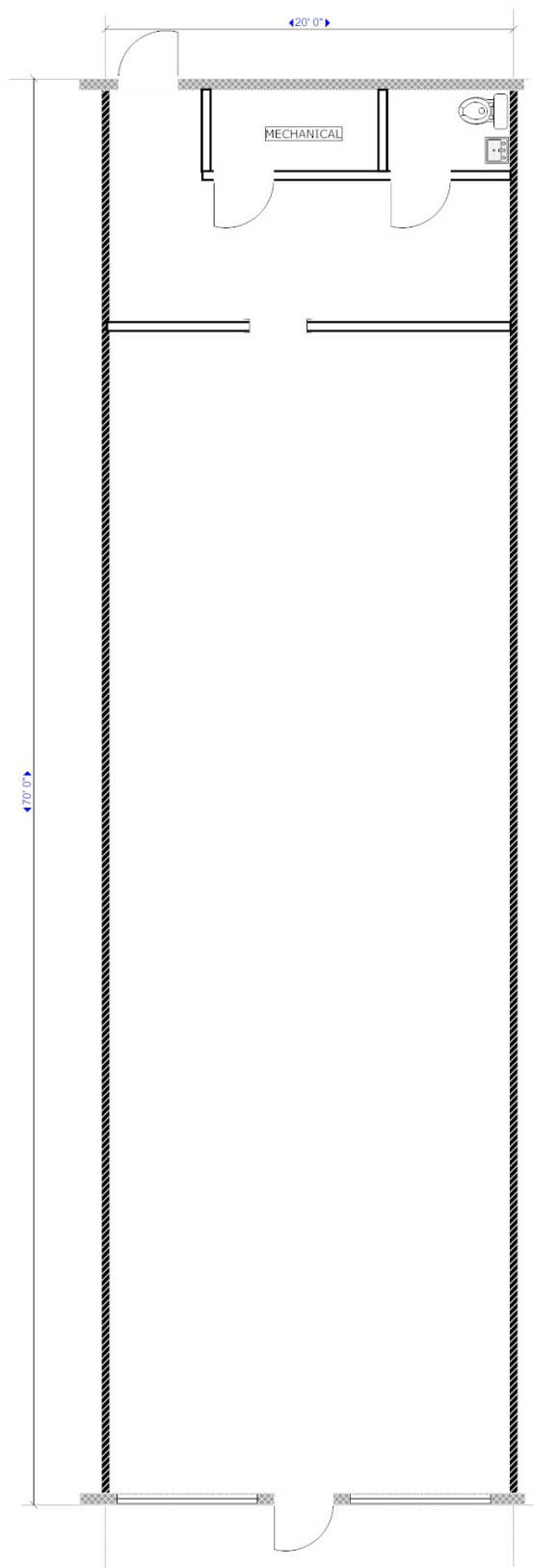
1800 NW 86th St | Clive, IA 50325

For Lease

Floor Plan - Suite 7

1,400 SF

Available 9/1/24



Plaza 1800

1800 NW 86th St | Clive, IA 50325

For Lease

Location



Contact Us

Bill Wright

Senior Vice President
+1 515 210 3050
bill.wright2@cbre.com
Licensed in the State of Iowa.

Chris Pendroy, CCIM, SIOR

Senior Vice President
+1 515 402 6600
chris.pendroy@cbre.com
Licensed in the State of Iowa.

Grant Wright, CCIM

First Vice President
+1 515 745 5113
grant.wright@cbre.com
Licensed in the State of Iowa.

Dakota Little

Sales Associate
+1 515 745 4378
dakota.little@cbre.com
Licensed in the State of Iowa.

© 2024 CBRE, Inc. All rights reserved. This information has been obtained from sources believed reliable, but has not been verified for accuracy or completeness. You should conduct a careful, independent investigation of the property and verify all information. Any reliance on this information is solely at your own risk. CBRE and the CBRE logo are service marks of CBRE, Inc. All other marks displayed on this document are the property of their respective owners, and the use of such logos does not imply any affiliation with or endorsement of CBRE. Photos herein are the property of their respective owners. Use of these images without the express written consent of the owner is prohibited.

www.cbre.com/desmoines

CBRE