

Rendering

General or medical office in **Murray Hill** sale or lease

Space highlights

- Newly renovated space
- 1 reception desk / waiting area
- 2 office / exam rooms
- Wet pantry / break room
- 1 private bathroom
- 24/7 building access

Availability

Ground floor - Unit: LBB

Possession

Immediate

Rate

Upon request

Get more information:

Thomas Kaufman | Principal
D. 917 877 6031 | M. 917 453 1028
E. thomas.kaufman@avisonyoung.com

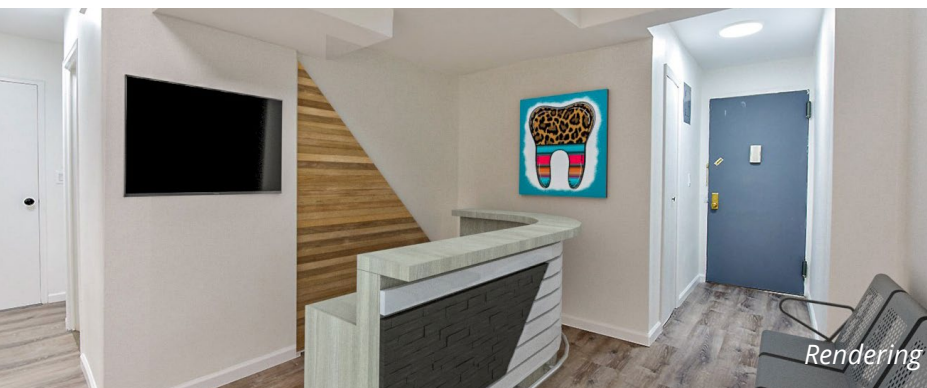
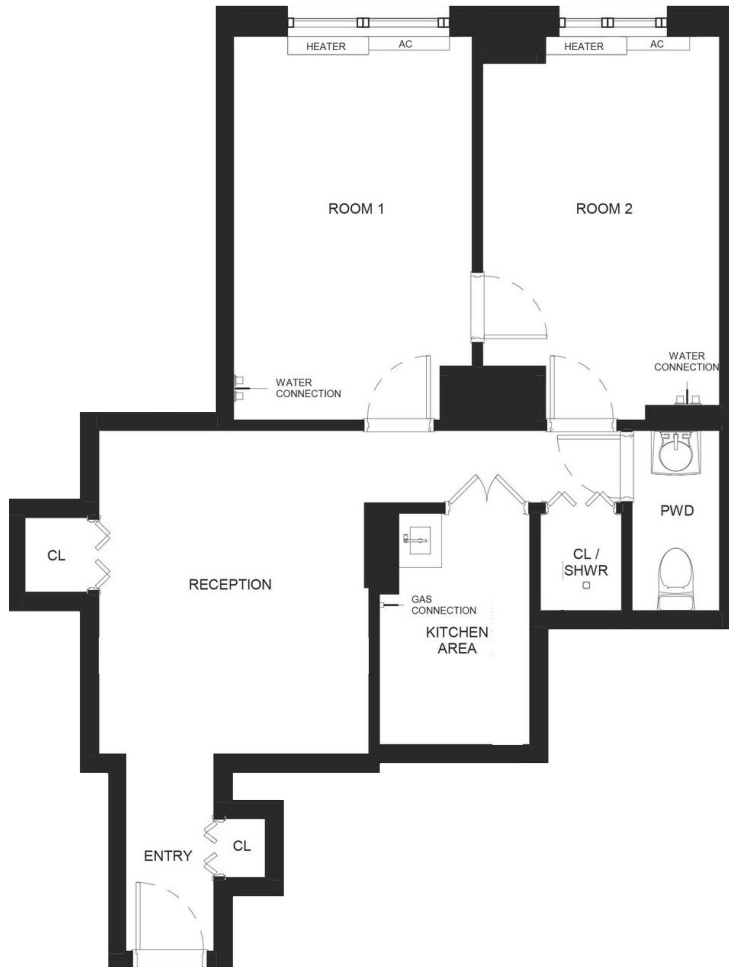
Mark Roopchan | Associate
D. 212 729 7087 | M. 646 460 9384
E. mark.roopchan@avisonyoung.com

Office for sale or lease

150 East 37th Street, New York, NY 10016

Ground floor

Suite LBB



Get more information:

Thomas Kaufman | Principal
D. 917 877 6031 | M. 917 453 1028
E. thomas.kaufman@avisonyoung.com

Mark Roopchan | Associate
D. 212 729 7087 | M. 646 460 9384
E. mark.roopchan@avisonyoung.com

© 2024 Avison Young - New York, LLC. All rights reserved.
E. & O.E.: The information contained herein was obtained from sources which we deem reliable and, while thought to be correct, is not guaranteed by Avison Young.

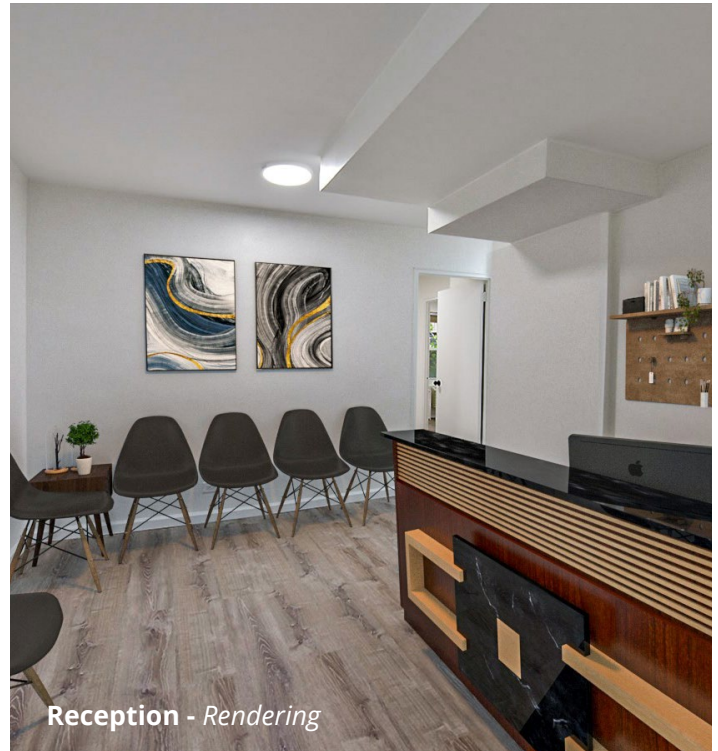
**AVISON
YOUNG**

Office for sale or lease

150 East 37th Street, New York, NY 10016



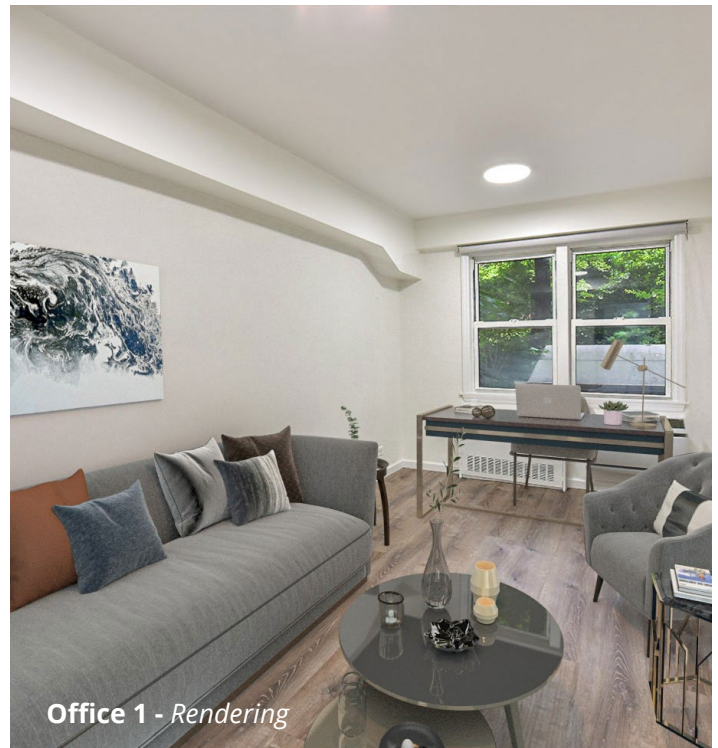
Reception



Reception - Rendering



Office 1



Office 1 - Rendering

Get more information:

Thomas Kaufman | Principal
D. 917 877 6031 | M. 917 453 1028
E. thomas.kaufman@avisonyoung.com

Mark Roopchan | Associate
D. 212 729 7087 | M. 646 460 9384
E. mark.roopchan@avisonyoung.com


© 2024 Avison Young - New York, LLC. All rights reserved.
E. & O.E.: The information contained herein was obtained from sources which we deem reliable and, while thought to be correct, is not guaranteed by Avison Young.

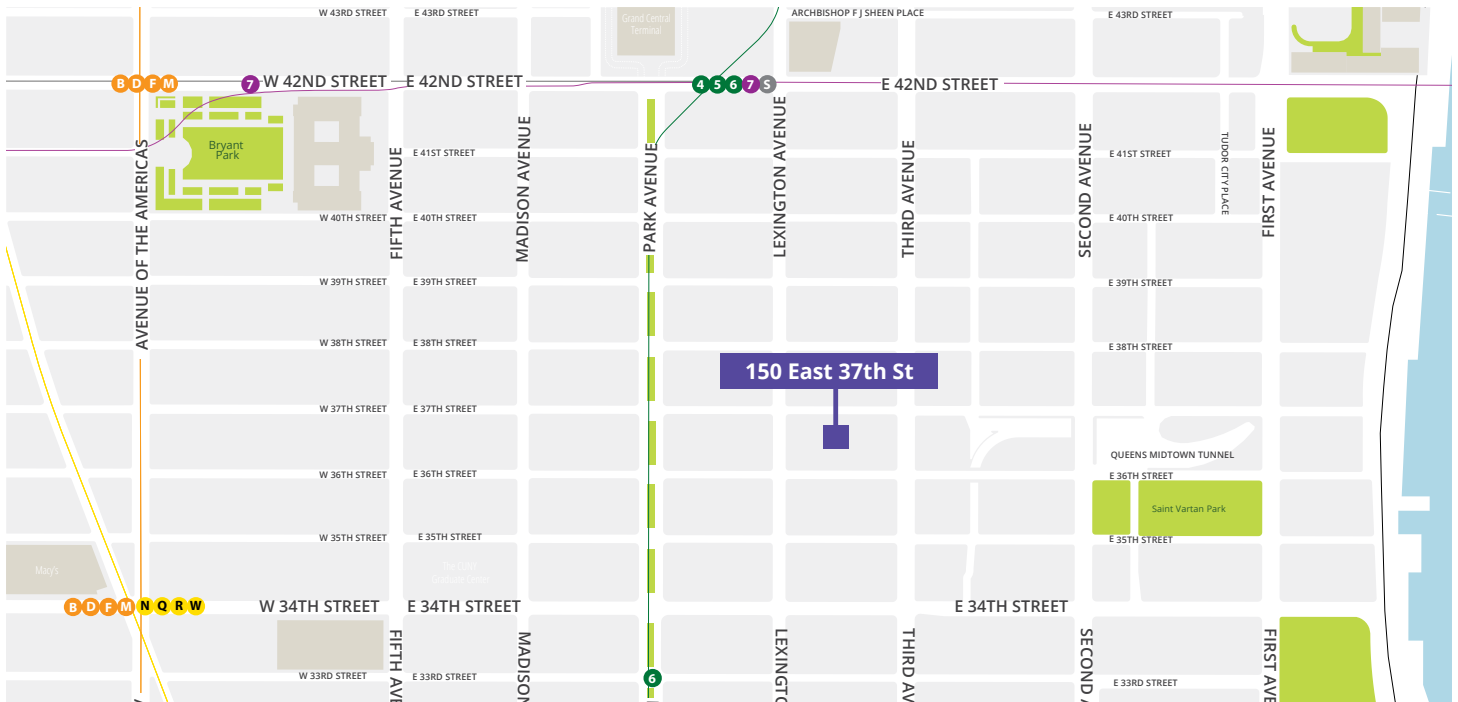
**AVISON
YOUNG**

Office for sale or lease

150 East 37th Street, New York, NY 10016

Building highlights

- Potential use groups
 - Medical office
 - Dental office
 - Psychotherapy office
 - Wellness office
 - Chiropractor office
 - Non-profit office
 - Community facility
- A short walk from Grand Central Terminal which includes the:
 **MTA** Metro-North Railroad
- Surrounded by numerous citi bike locations



Get more information:

Thomas Kaufman | Principal
D. 917 877 6031 | M. 917 453 1028
E. thomas.kaufman@avisonyoung.com

Mark Roopchan | Associate
D. 212 729 7087 | M. 646 460 9384
E. mark.roopchan@avisonyoung.com

© 2024 Avison Young - New York, LLC. All rights reserved.
E. & O.E.: The information contained herein was obtained from sources which we deem reliable and, while thought to be correct, is not guaranteed by Avison Young.

**AVISON
YOUNG**