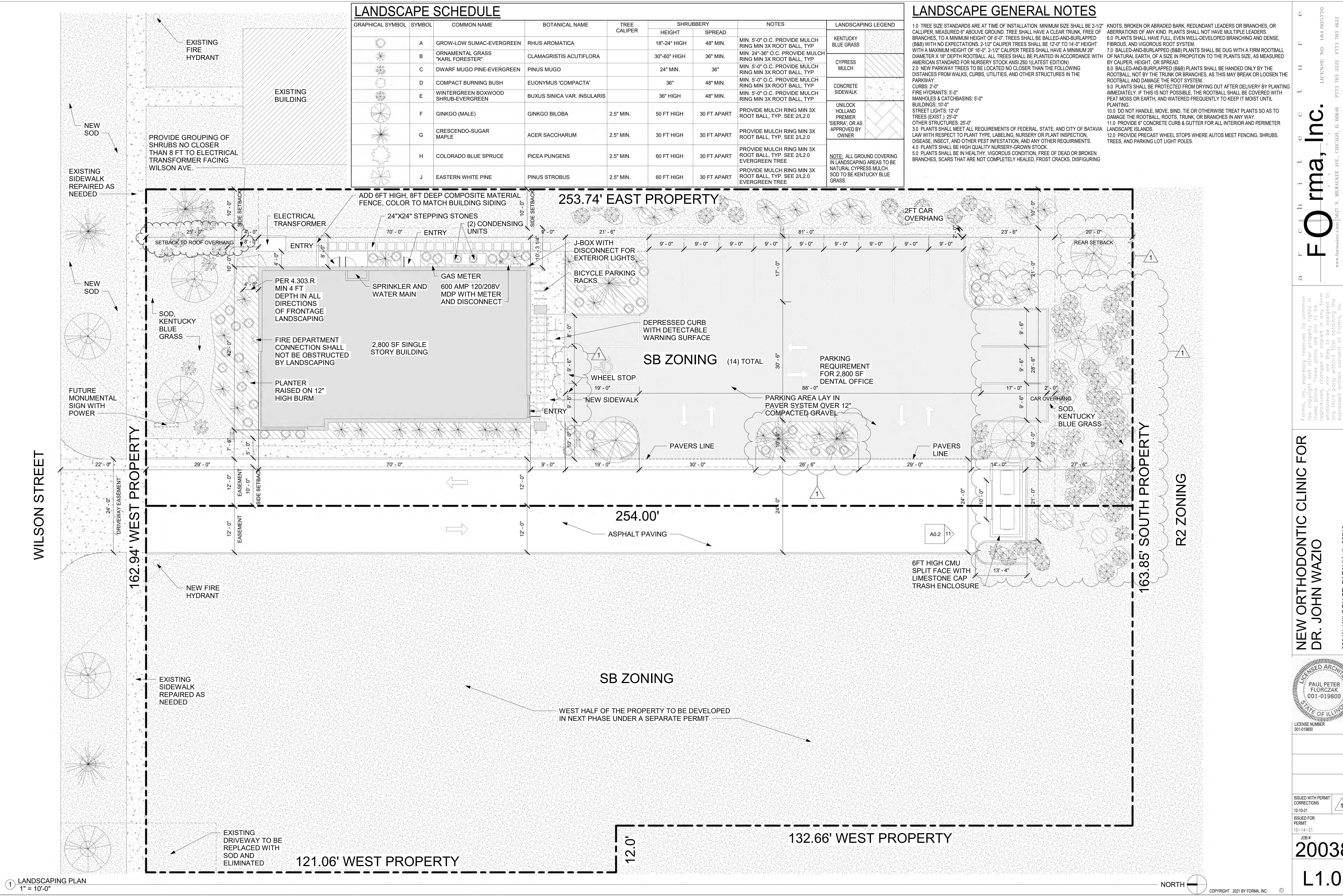


LANDSCAPE SCHEDULE

GRAPHICAL SYMBOL	SYMBOL	COMMON NAME	BOTANICAL NAME	TREE CALIPER	SHRUBBERY		NOTES	LANDSCAPING LEGEND	
					HEIGHT	SPREAD		KENTUCKY BLUE GRASS	CYPRESS MULCH
	A	GROW-LOW SUMAC-EVERGREEN	RHUS AROMATICA		18"-24" HIGH	48" MIN.	MIN. 5'-0" O.C. PROVIDE MULCH RING MIN 3X ROOT BALL, TYP		
	B	ORNAMENTAL GRASS "KARL FORESTER"	CLAMAGRISTIS ACUTIFLORA		30"-60" HIGH	36" MIN.	MIN. 24"-36" O.C. PROVIDE MULCH RING MIN 3X ROOT BALL, TYP		
	C	DWARF MUGO PINE-EVERGREEN	PINUS MUGO		24" MIN.	36"	MIN. 5'-0" O.C. PROVIDE MULCH RING MIN 3X ROOT BALL, TYP		
	D	COMPACT BURNING BUSH	EUONYMUS 'COMPACTA'		36"	48" MIN.	MIN. 5'-0" O.C. PROVIDE MULCH RING MIN 3X ROOT BALL, TYP		
	E	WINTERGREEN BOXWOOD SHRUB-EVERGREEN	BUXUS SINICA VAR. INSULARIS		36" HIGH	48" MIN.	MIN. 5'-0" O.C. PROVIDE MULCH RING MIN 3X ROOT BALL, TYP		
	F	GINKGO (MALE)	GINKGO BILOBA	2.5" MIN.	50 FT HIGH	30 FT APART	PROVIDE MULCH RING MIN 3X ROOT BALL, TYP. SEE 2/L2.0		
	G	CRESCENDO-SUGAR MAPLE	ACER SACCHARUM	2.5" MIN.	30 FT HIGH	30 FT APART	PROVIDE MULCH RING MIN 3X ROOT BALL, TYP. SEE 2/L2.0		
	H	COLORADO BLUE SPRUCE	PICEA PUNGENS	2.5" MIN.	60 FT HIGH	30 FT APART	PROVIDE MULCH RING MIN 3X ROOT BALL, TYP. SEE 2/L2.0		
	J	EASTERN WHITE PINE	PINUS STROBUS	2.5" MIN.	60 FT HIGH	30 FT APART	PROVIDE MULCH RING MIN 3X ROOT BALL, TYP. SEE 2/L2.0		

LANDSCAPE GENERAL NOTES

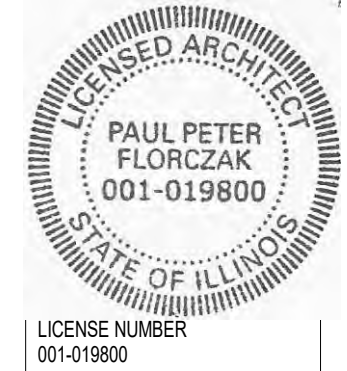
- TREE SIZE STANDARDS ARE AT TIME OF INSTALLATION. MINIMUM SIZE SHALL BE 2-1/2" CALIPER, MEASURED 6" ABOVE GROUND. TREE SHALL HAVE A CLEAR TRUNK, FREE OF BRANCHES, TO A MINIMUM HEIGHT OF 6'-0". TREES SHALL BE BALLED-AND-BURLAPPED (B&B) WITH NO EXPECTATIONS. 2-1/2" CALIPER TREES SHALL BE 12'-0" TO 14'-0" HEIGHT WITH A MAXIMUM HEIGHT OF 16'-0". 2-1/2" CALIPER TREES SHALL HAVE A MINIMUM 28" DIAMETER X 18" DEPTH ROOTBALL. ALL TREES SHALL BE PLANTED IN ACCORDANCE WITH AMERICAN STANDARD FOR NURSERY STOCK (ANSI Z60.1 LATEST EDITION)
- NEW PARKWAY TREES TO BE LOCATED NO CLOSER THAN THE FOLLOWING DISTANCES FROM WALKS, CURBS, UTILITIES, AND OTHER STRUCTURES IN THE PARKWAY:
 - CURBS: 2'-0"
 - FIRE HYDRANTS: 5'-0"
 - MANHOLES & CATCHBASINS: 5'-0"
 - BUILDINGS: 10'-0"
 - STREET LIGHTS: 12'-0"
 - TREES (EXIST): 25'-0"
 - OTHER STRUCTURES: 25'-0"
- PLANTS SHALL MEET ALL REQUIREMENTS OF FEDERAL, STATE, AND CITY OF BATAVIA LAW WITH RESPECT TO PLANT TYPE, LABELING, NURSERY OR PLANT INSPECTION, DISEASE, INSECT, AND OTHER PEST INFESTATION AND ANY OTHER REQUIREMENTS.
- PLANTS SHALL BE HIGH QUALITY NURSERY-GROWN STOCK.
- PLANTS SHALL BE IN HEALTHY, VIGOROUS CONDITION, FREE OF DEAD OR BROKEN BRANCHES, SCARS THAT ARE NOT COMPLETELY HEALED, FROST CRACKS, DISFIGURING KNOTS, BROKEN OR ABRADED BARK, REDUNDANT LEADERS OR BRANCHES, OR ABERRATIONS OF ANY KIND. PLANTS SHALL NOT HAVE MULTIPLE LEADERS.
- PLANTS SHALL HAVE FULL, EVEN WELL-DEVELOPED BRANCHING AND DENSE, FIBROUS, AND VIGOROUS ROOT SYSTEM.
- BALLED-AND-BURLAPPED (B&B) PLANTS SHALL BE DUG WITH A FIRM ROOTBALL OF NATURAL EARTH, OF A SIZE IN PROPORTION TO THE PLANTS SIZE, AS MEASURED BY CALIPER, HEIGHT, OR SPREAD.
- BALLED-AND-BURLAPPED (B&B) PLANTS SHALL BE HANDED ONLY BY THE ROOTBALL, NOT BY THE TRUNK OR BRANCHES, AS THIS MAY BREAK OR LOOSEN THE ROOTBALL AND DAMAGE THE ROOT SYSTEM.
- PLANTS SHALL BE PROTECTED FROM DRYING OUT AFTER DELIVERY BY PLANTING IMMEDIATELY. IF THIS IS NOT POSSIBLE, THE ROOTBALL SHALL BE COVERED WITH PEAT MOSS OR EARTH, AND WATERED FREQUENTLY TO KEEP IT MOIST UNTIL PLANTING.
- DO NOT HANDLE, MOVE, BIND, TIE OR OTHERWISE TREAT PLANTS SO AS TO DAMAGE THE ROOTBALL, ROOTS, TRUNK, OR BRANCHES IN ANY WAY.
- PROVIDE 6" CONCRETE CURB & GUTTER FOR ALL INTERIOR AND PERIMETER LANDSCAPE ISLANDS.
- PROVIDE PRECAST WHEEL STOPS WHERE AUTOS MEET FENCING, SHRUBS, TREES, AND PARKING LOT LIGHT POLES.



1 LANDSCAPING PLAN
1" = 10'-0"

Forma, Inc. expressly reserves its common law copyright and other property rights in these plans. These plans are not to be reproduced, changed or copied in any form or by any means without first obtaining the expressed written consent of Forma, Inc.

NEW ORTHODONTIC CLINIC FOR DR. JOHN WAZIO
 950 W. WILSON ST. BATAVIA, IL 60510



ISSUED WITH PERMIT CORRECTIONS 12-10-21

ISSUED FOR PERMIT 10-14-21

JOB # **20038**

L1.0

Forma, Inc.
 a r c h i t e c t u r e
 d e s i g n b u i l d i n g