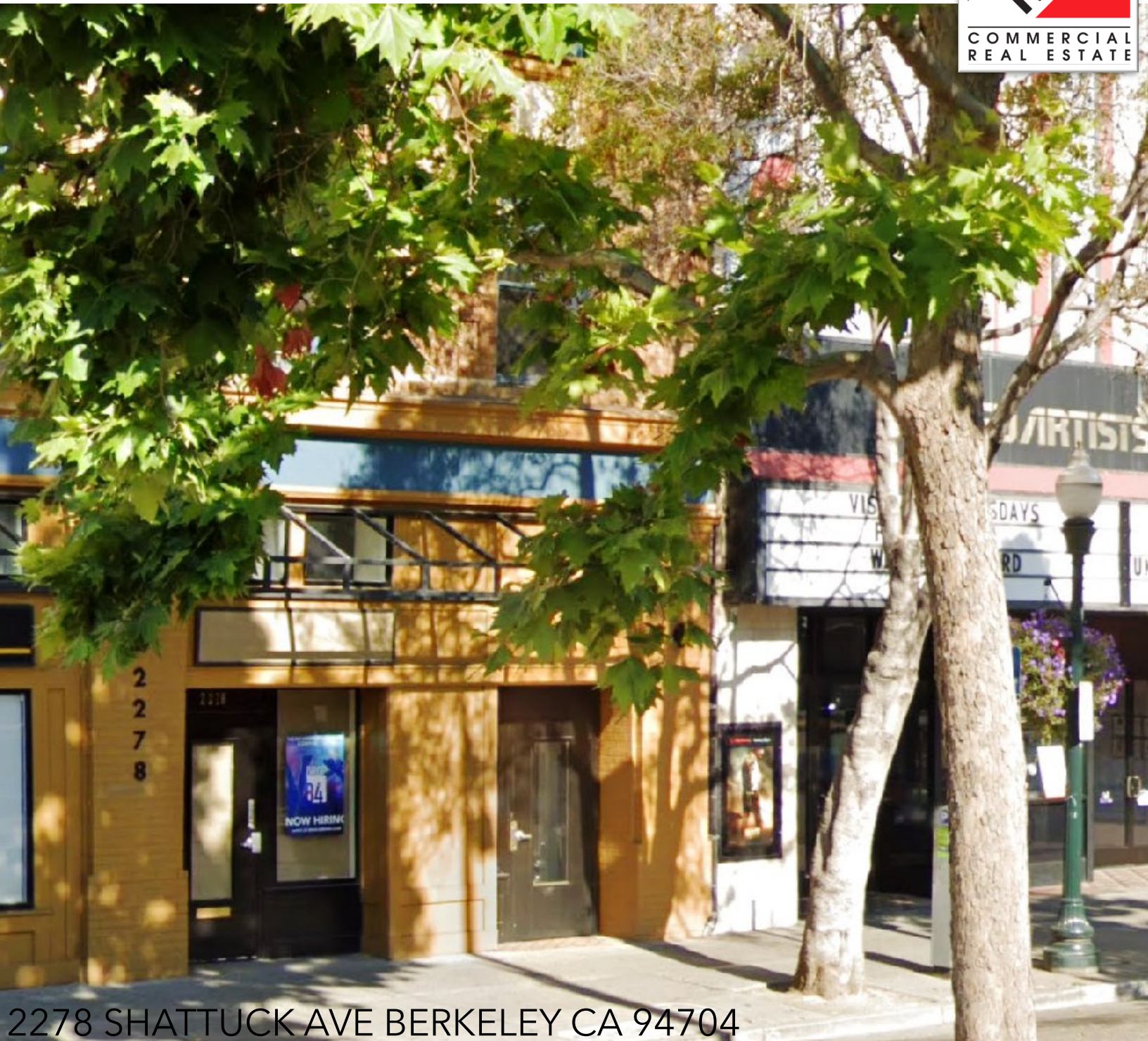


±2555-SF BERKELEY OFFICE / RETAIL



2278 SHATTUCK AVE BERKELEY CA 94704

\$3.50 PSF MONTHLY
IG + PG&E & JANITORIAL

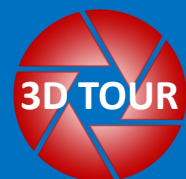
Ground floor office or retail, prestige buildout, great section of Shattuck Avenue. Ideal for law firm, other professional service office, retail, or a hybrid use thereof.

Matt Gondak

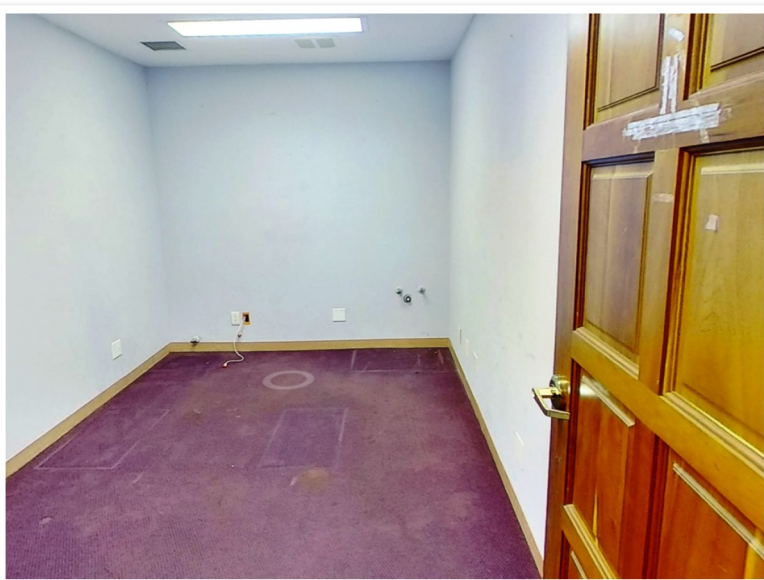
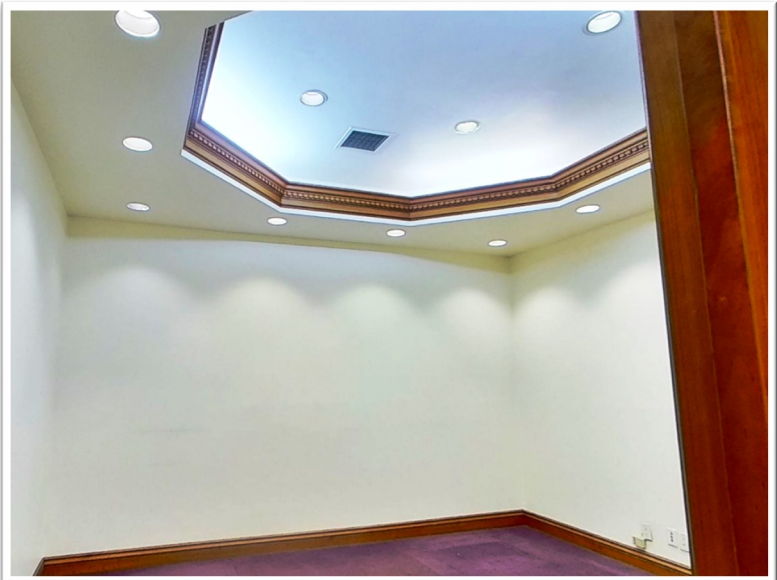
510-450-1434

mgondak@mrecommercial.com

CA DRE No: 00832220

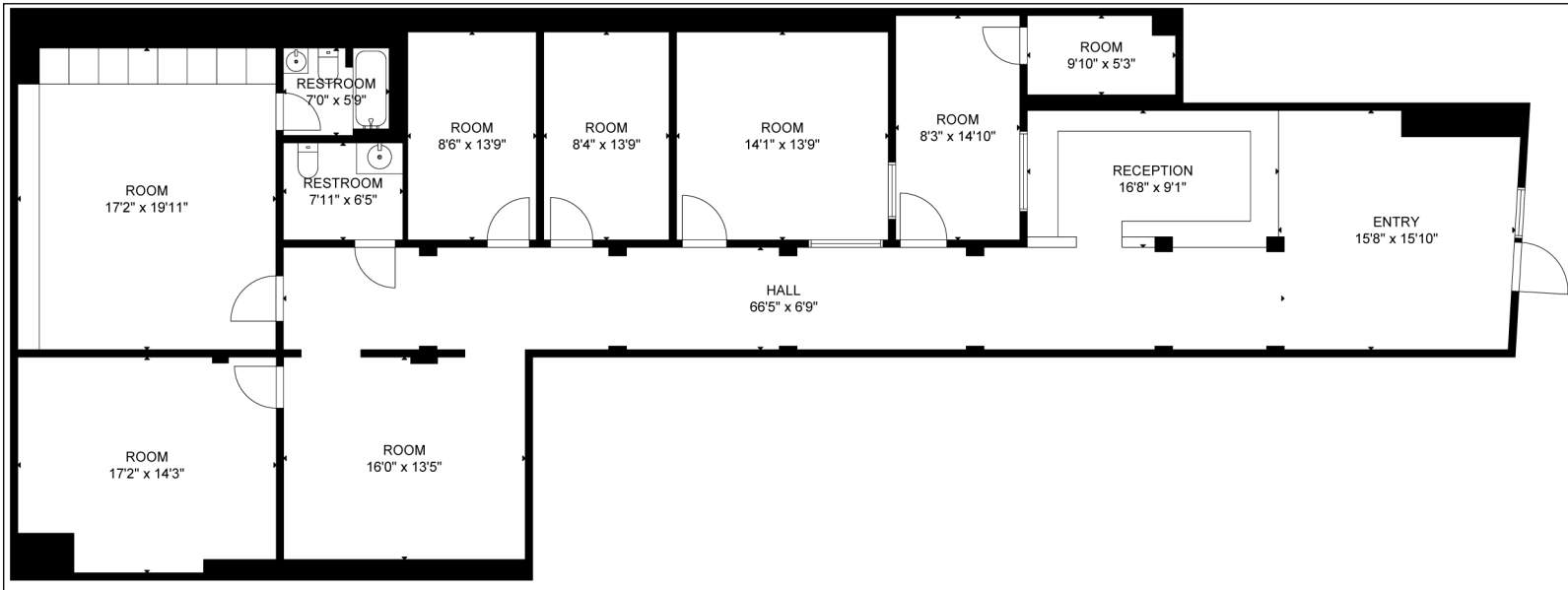


2278 SHATTUCK AVE BERKELEY CA
±2555 SQUARE FEET



All information herein is offered in good faith and deemed accurate, but not guaranteed.

2278 SHATTUCK AVE BERKELEY CA
±2555 SQUARE FEET



All information herein is offered in good faith and deemed accurate, but not guaranteed.