

309

GOLD STREET DOWNTOWN BROOKLYN

Corner of Gold & Johnson Streets

RETAIL/RESTAURANT FOR LEASE

APPROXIMATE SIZE

Ground Floor: 2,500 SF + Storage

ASKING RENT

\$21,000/Month

POSSESSION

Immediate

TERM

Negotiable

FRONTAGE

70 FT

COMMENTS

- Former "Starbucks" with all existing infrastructure and fixtures in place
- At the base of "BKLYN AIR", a new 30-story luxury residential tower with 256-units
- Setup ideal for coffee/café, QSR, or juice shop
- All uses considered

NEIGHBORS

The Oro Condominium • Urban
Uncorked • Botte • Naya • Chipotle • Five Guys
• Pret • Chase Bank • Loading Dock Theatre •
Public Storage • Compilation Coffee Roasters

TRANSPORTATION



NOAM AZIZ

Senior Director
212.468.5984
naziz@meridiancapital.com

JOAQUIN CARRILLO

Associate
212.468.5919
jcarrillo@meridiancapital.com

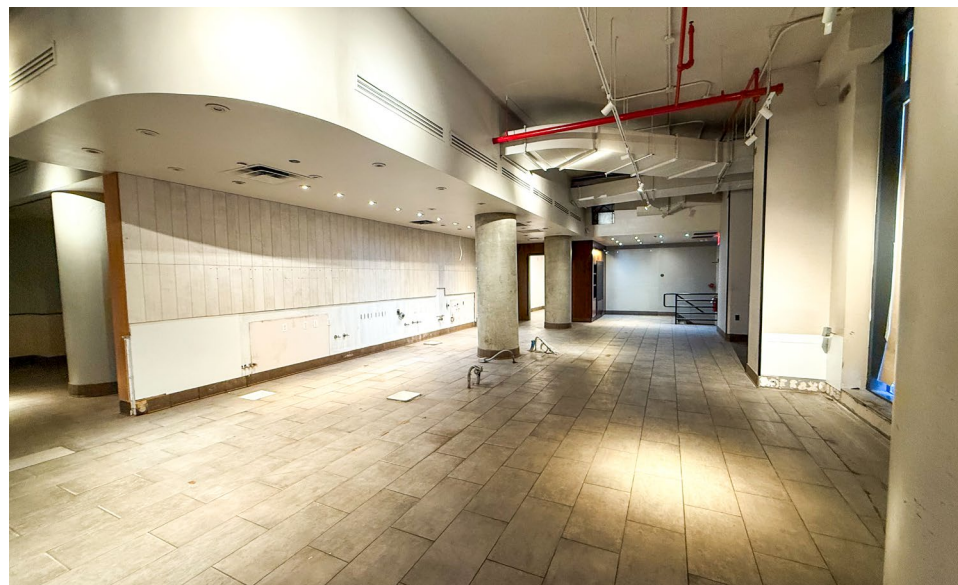
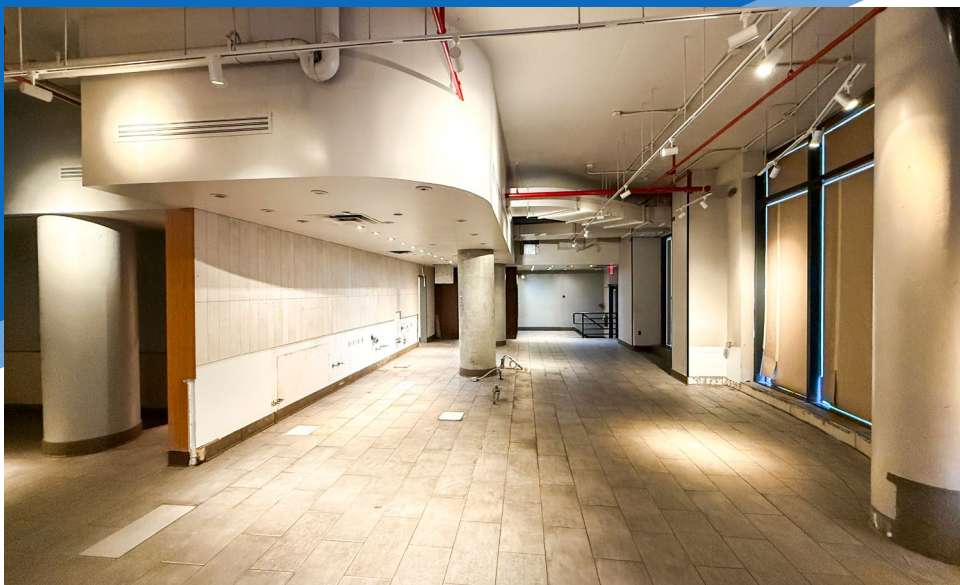
CARSON SHAHRABANI

Associate
212.468.5927
cshahrabani@meridiancapital.com



MERIDIAN
RETAIL LEASING

All information supplied is from sources deemed reliable and is furnished subject to errors, omissions, modifications, removal of the listing from sale or lease, and to any listing conditions, including the rates and manner of payment of commissions for particular offerings imposed by Meridian Capital Group. This information may include estimates and projections prepared by Meridian Capital Group with respect to future events, and these future events may or may not actually occur. Such estimates and projections reflect various assumptions concerning anticipated results. While Meridian Capital Group believes these assumptions are reasonable, there can be no assurance that any of these estimates and projections will be correct. Therefore, actual results may vary materially from these estimates and projections. Any square footage dimensions set forth are approximate.



INTERIOR

NOAM AZIZ
Senior Director
212.468.5984
naziz@meridiancapital.com

JOAQUIN CARRILLO
Associate
212.468.5919
jcarrillo@meridiancapital.com

CARSON SHAHRABANI
Associate
212.468.5927
cshahrabani@meridiancapital.com



MERIDIAN
RETAIL LEASING

All information supplied is from sources deemed reliable and is furnished subject to errors, omissions, modifications, removal of the listing from sale or lease, and to any listing conditions, including the rates and manner of payment of commissions for particular offerings imposed by Meridian Capital Group. This information may include estimates and projections prepared by Meridian Capital Group with respect to future events, and these future events may or may not actually occur. Such estimates and projections reflect various assumptions concerning anticipated results. While Meridian Capital Group believes these assumptions are reasonable, there can be no assurance that any of these estimates and projections will be correct. Therefore, actual results may vary materially from these estimates and projections. Any square footage dimensions set forth are approximate.

309 GOLD STREET

DOWNTOWN BROOKLYN | Corner of Gold and Johnson Streets

RETAIL/RESTAURANT FOR LEASE



NEIGHBORS

NOAM AZIZ

Senior Director
212.468.5984
naziz@meridiancapital.com

JOAQUIN CARRILLO

Associate
212.468.5919
jcarrillo@meridiancapital.com

CARSON SHAHRABANI

Associate
212.468.5927
cshahrabani@meridiancapital.com



MERIDIAN
RETAIL LEASING

All information supplied is from sources deemed reliable and is furnished subject to errors, omissions, modifications, removal of the listing from sale or lease, and to any listing conditions, including the rates and manner of payment of commissions for particular offerings imposed by Meridian Capital Group. This information may include estimates and projections prepared by Meridian Capital Group with respect to future events, and these future events may or may not actually occur. Such estimates and projections reflect various assumptions concerning anticipated results. While Meridian Capital Group believes these assumptions are reasonable, there can be no assurance that any of these estimates and projections will be correct. Therefore, actual results may vary materially from these estimates and projections. Any square footage dimensions set forth are approximate.