



1004 MONTAUK HIGHWAY • WATER MILL, NEW YORK

New Medical Office Building Development

New Medical Office Building Development

A rare opportunity to lease brand-new medical office space in the heart of the Hamptons. This to-be-built property sits on .96 acres along Montauk Highway, strategically positioned between Southampton and Bridgehampton in the sought-after community of Water Mill.

Property Highlights

- Up to 9,450 SF available for lease
 - **Level 1:** 3,150 SF – Medical Office Space
 - **Level 2:** 3,150 SF – Medical Office Space
 - **Lower Level:** 3,150 SF – Storage or Support Services
- Built-to-suit option available
- Modern construction designed for medical use
- All floors accessible via elevator and stairwell
- Ample on-site parking: 41 parking spaces

Transportation & Accessibility

- Conveniently located on Montauk Highway (Route 27), the main east-west corridor of the Hamptons
- Easy access to Southampton, Bridgehampton, and East Hampton
- The Long Island Rail Road (LIRR) stops in both Southampton and Bridgehampton, connecting directly to New York City
- Hampton Jitney and Hampton Luxury Liner provide frequent bus service between Manhattan and the East End
- Regional airports at East Hampton, Gabreski (Westhampton) and MacArthur (Islip)



LOCATION

WATER MILL, NEW YORK
EAST END, LONG ISLAND

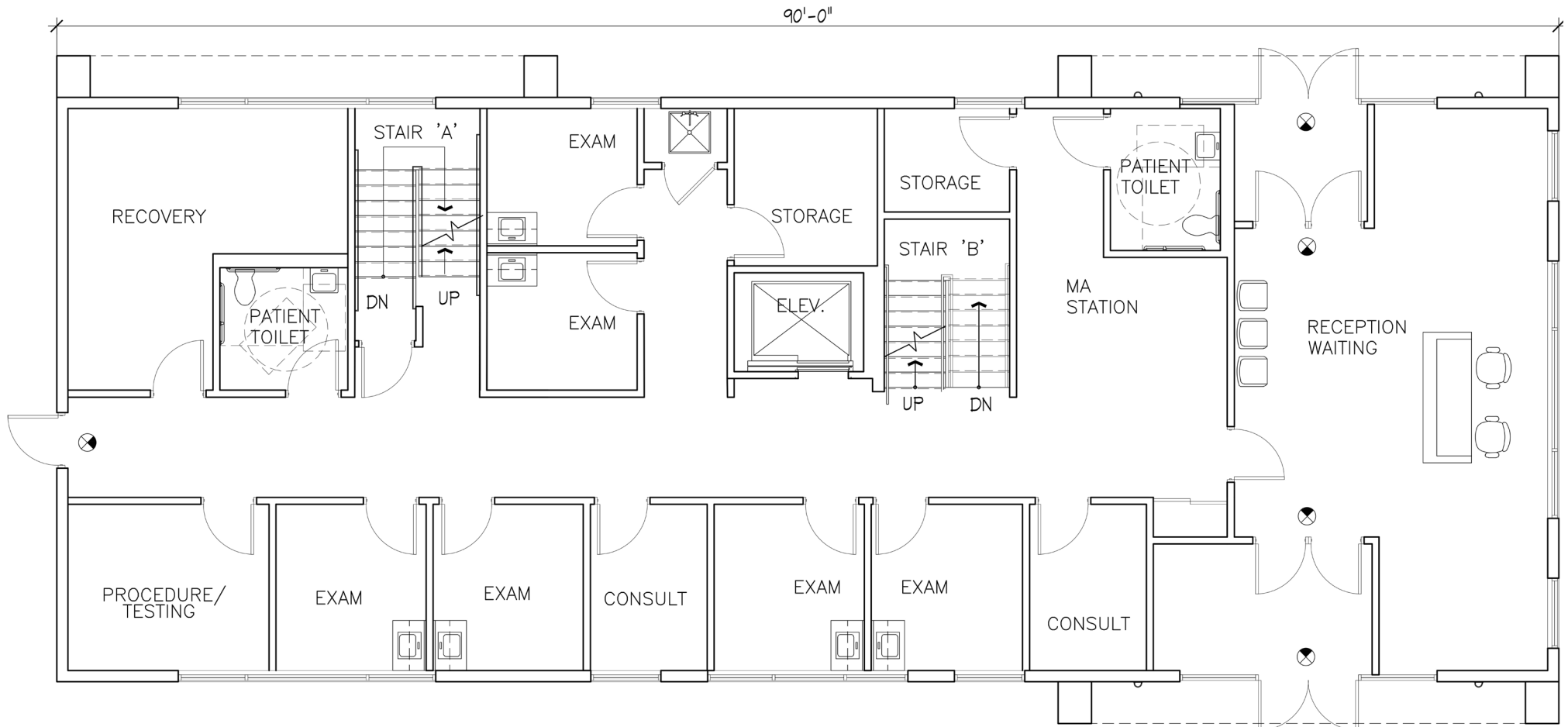
Location

Water Mill is known for its balance of seclusion and culture. Just minutes from both Southampton and Bridgehampton, the area offers a blend of expansive estates, family-friendly attractions, and world-class destinations such as the Parrish Art Museum. Physicians and healthcare providers here can serve a vibrant community while enjoying all the Hamptons lifestyle has to offer.



PROPOSED SINGLE TENANT LAYOUT

WATER MILL, NEW YORK
EAST END, LONG ISLAND

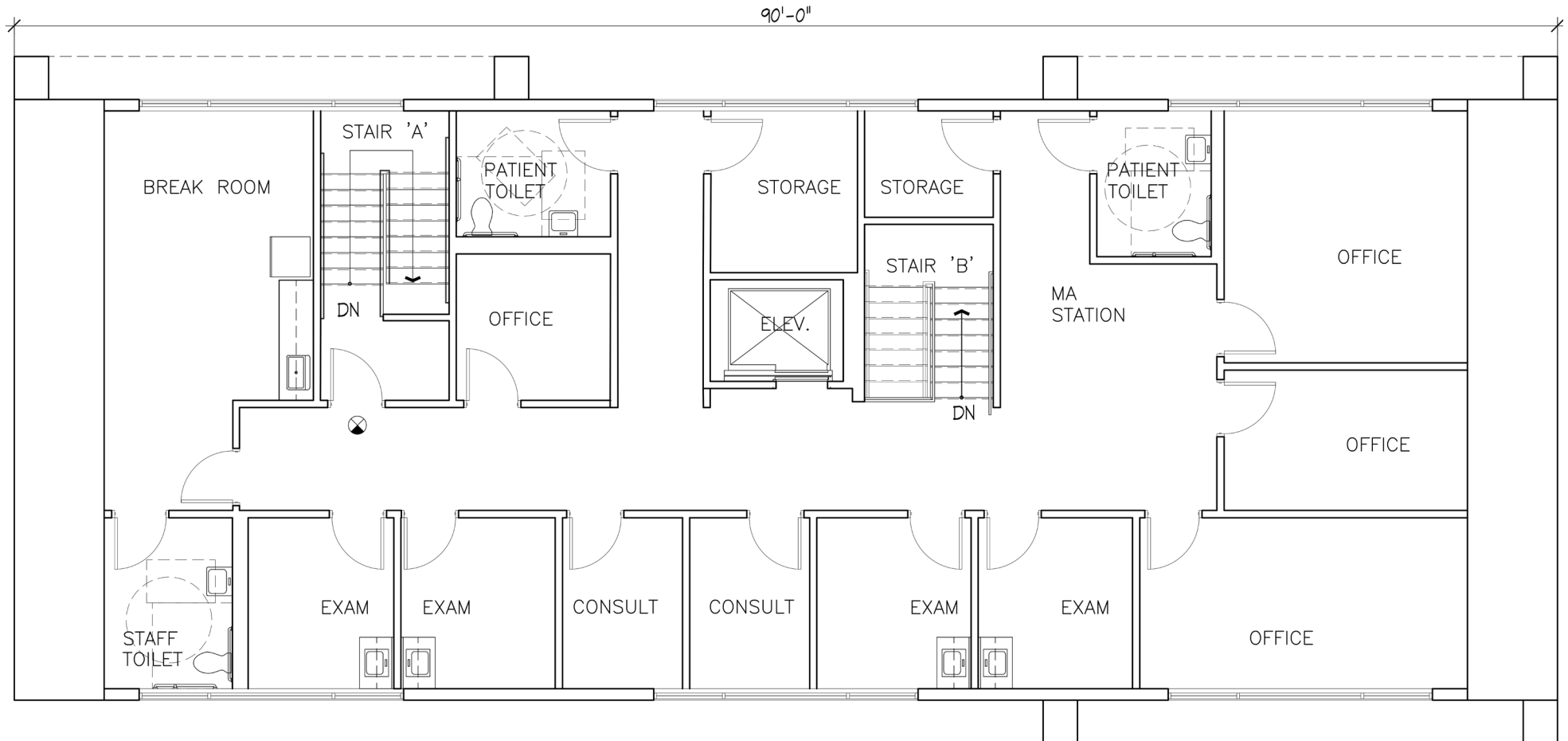


Level 1

- Waiting and Reception Area
- Six Exam Rooms
- Procedure Room
- Recovery Room
- Two Offices/Consults
- Nurses' Station
- Two Storage Rooms
- Two ADA Restrooms

PROPOSED SINGLE TENANT LAYOUT

WATER MILL, NEW YORK
EAST END, LONG ISLAND

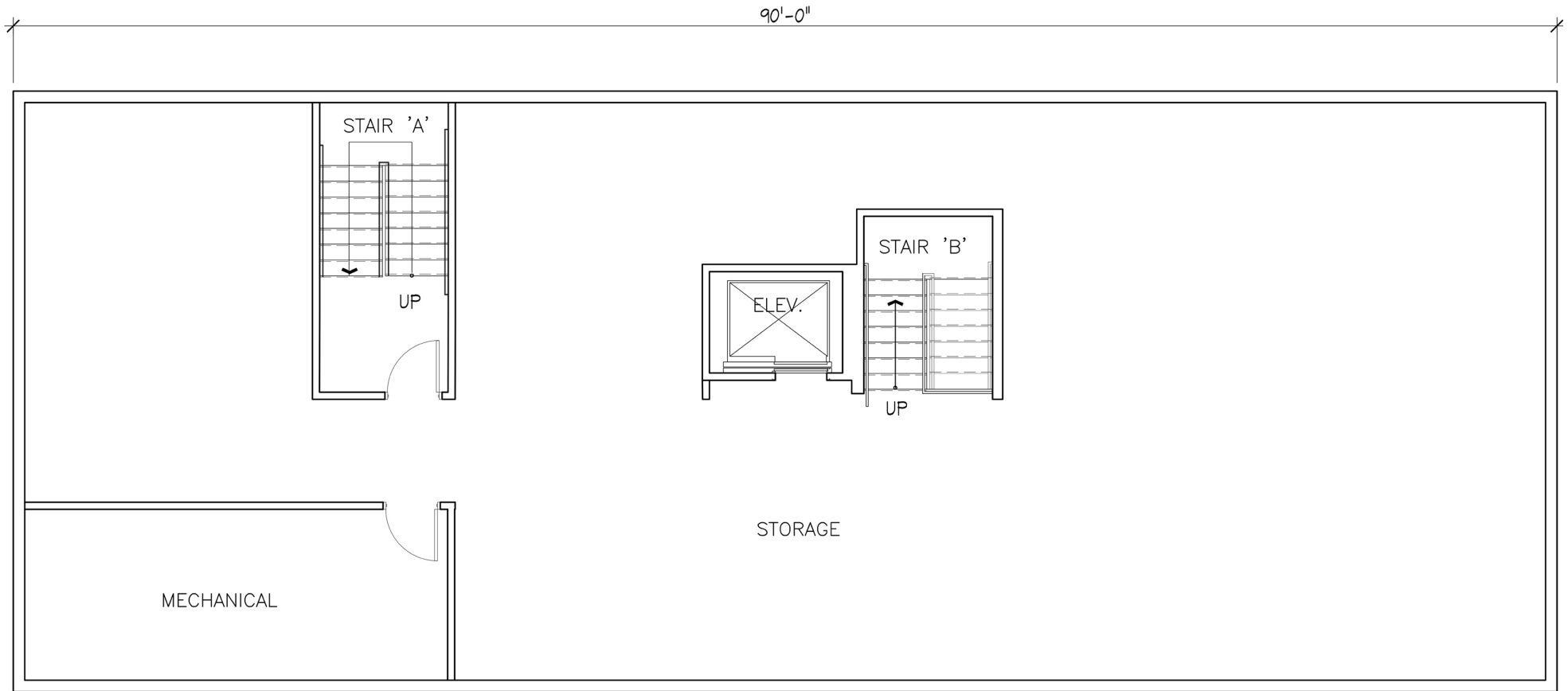


Level 2

- Four Exam Rooms
- Break Room
- Four Offices/Consults
- Nurses' Station
- Two Storage Rooms
- Three ADA Restrooms

PROPOSED SINGLE TENANT LAYOUT

WATER MILL, NEW YORK
EAST END, LONG ISLAND



LOWER LEVEL

- OFFICE/SUPPORT



WexlerHealthcareProperties.com

DAN LESSING

Licensed Associate Real Estate Broker

631.500.0743

Dan.Lessing@Corcoran.com

Real estate agents affiliated with The Corcoran Group are independent contractors and are not employees of The Corcoran Group. Equal Housing Opportunity. The Corcoran Group is a licensed real estate broker located at 590 Madison Ave, NY, NY 10022. All information furnished regarding property for sale or rent or regarding financing is from sources deemed reliable, but Corcoran makes no warranty or representation as to the accuracy thereof. All property information is presented subject to errors, omissions, price changes, changed property conditions, and withdrawal of the property from the market, without notice.

All information furnished herein is deemed reliable and is submitted subject to errors, omissions, change of terms and conditions, and prior sale, rental or withdrawal without notice. We do not represent or guarantee the accuracy of any information and are not liable for any reliance thereon. The information contained in this electronic message is confidential. If the reader of this message is not the intended recipient, you are hereby notified that any use or distribution or reproduction of this communication is prohibited.