

# 101 North 10<sup>th</sup> Street / 118 North 11<sup>th</sup> Street

Williamsburg, Brooklyn, NY

**Location:** Between Wythe Ave and Berry St



**Suite 201:** 7,526 RSF (Divisible)

**Suite 307:** 700 RSF

**Hecla 4<sup>th</sup> Floor:** 5,450 SF (Divisible)

**Ceiling Height:** 10 - 13 FT

## Highlights:

- Newly renovated office suites located in the heart of Williamsburg
- Lobby with elevator access
- HVAC system, fire sprinkler system, and Verizon Fios installed in each unit
- Located three blocks from the  Train Station on Bedford Avenue & five blocks from the  Train Station on Manhattan Avenue
- Surrounded by five major hotels – *The Williamsburg Hotel, Wythe Hotel, The William Vale, The Hoxton, and McCarren Hotel & Pool*



## Neighboring Tenants:



## Contact Exclusive Leasing Team



**Harrison Balisky**  
516-672-4493  
hb@olmstedre.com

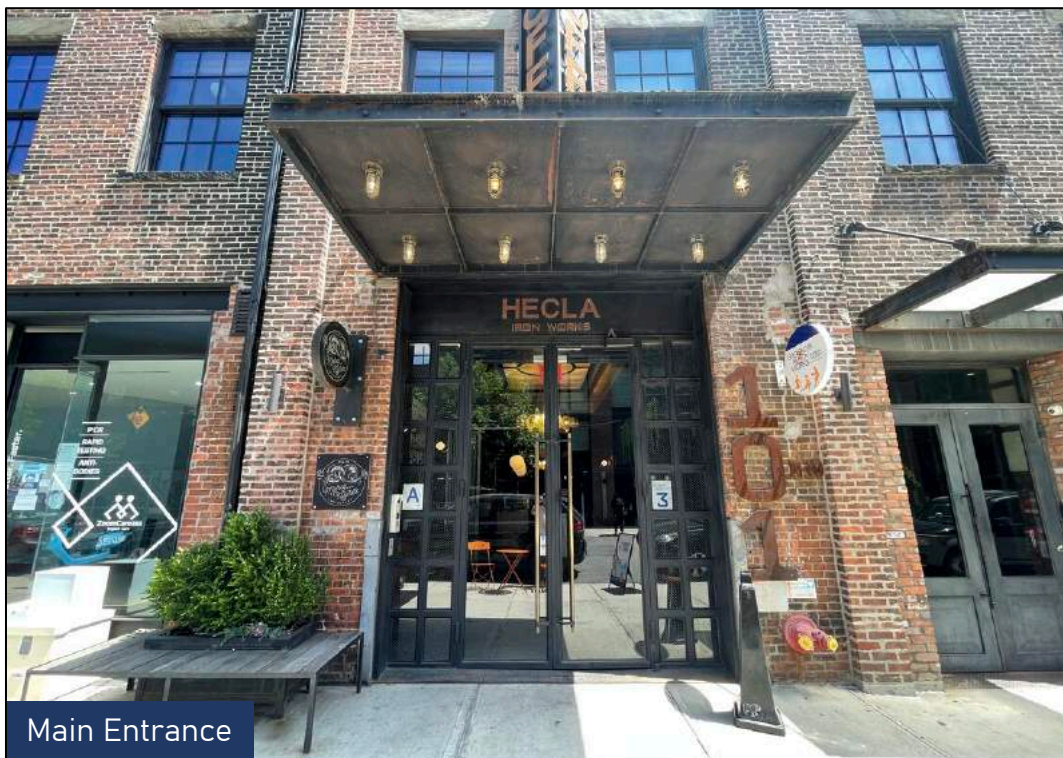
**Brad Krosser**  
862-368-7271  
bk@olmstedre.com



# 101 North 10<sup>th</sup> Street – Suite 201

Williamsburg, Brooklyn, NY

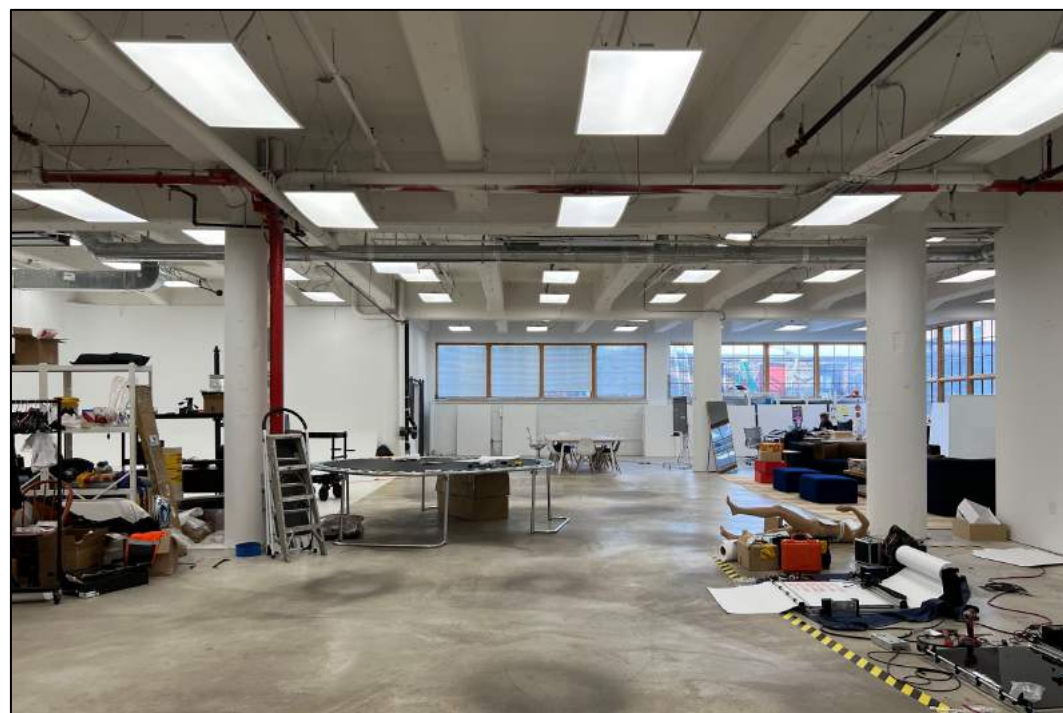
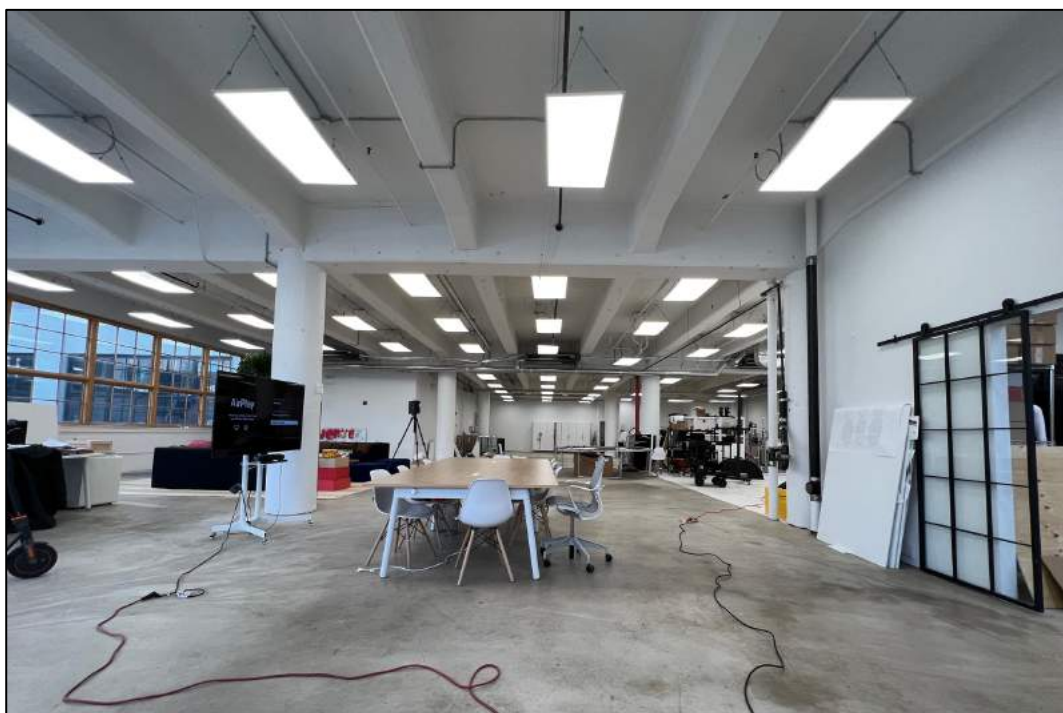
## Photos



Main Entrance



Front Lobby





# 101 North 10<sup>th</sup> Street – Suite 201

Williamsburg, Brooklyn, NY

## Photos





# 101 North 10<sup>th</sup> Street – Suite 307

## Photos

Williamsburg, Brooklyn, NY



Main Entrance



Front Lobby



Suite 307



Suite 307

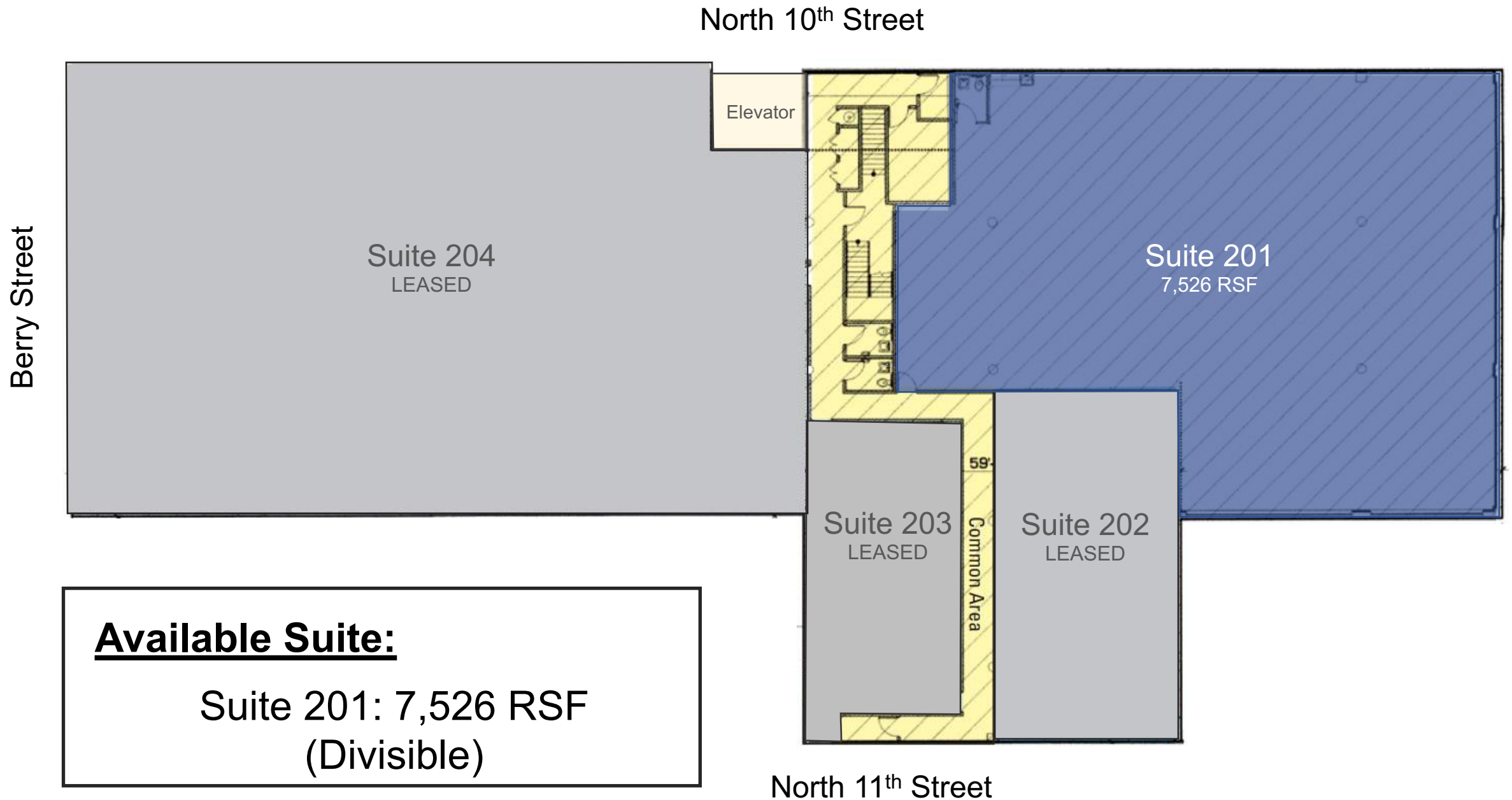
All information is from sources deemed reliable. No representation is made and we do not guarantee the accuracy of any information provided. All information must be independently verified. The value of any real estate investment is dependent on a variety of factors and should be evaluated carefully by prospective purchasers/ or tenants.



# 101 North 10<sup>th</sup> Street – Suite 201

Williamsburg, Brooklyn, NY

## 2nd Floorplan:



### Available Suite:

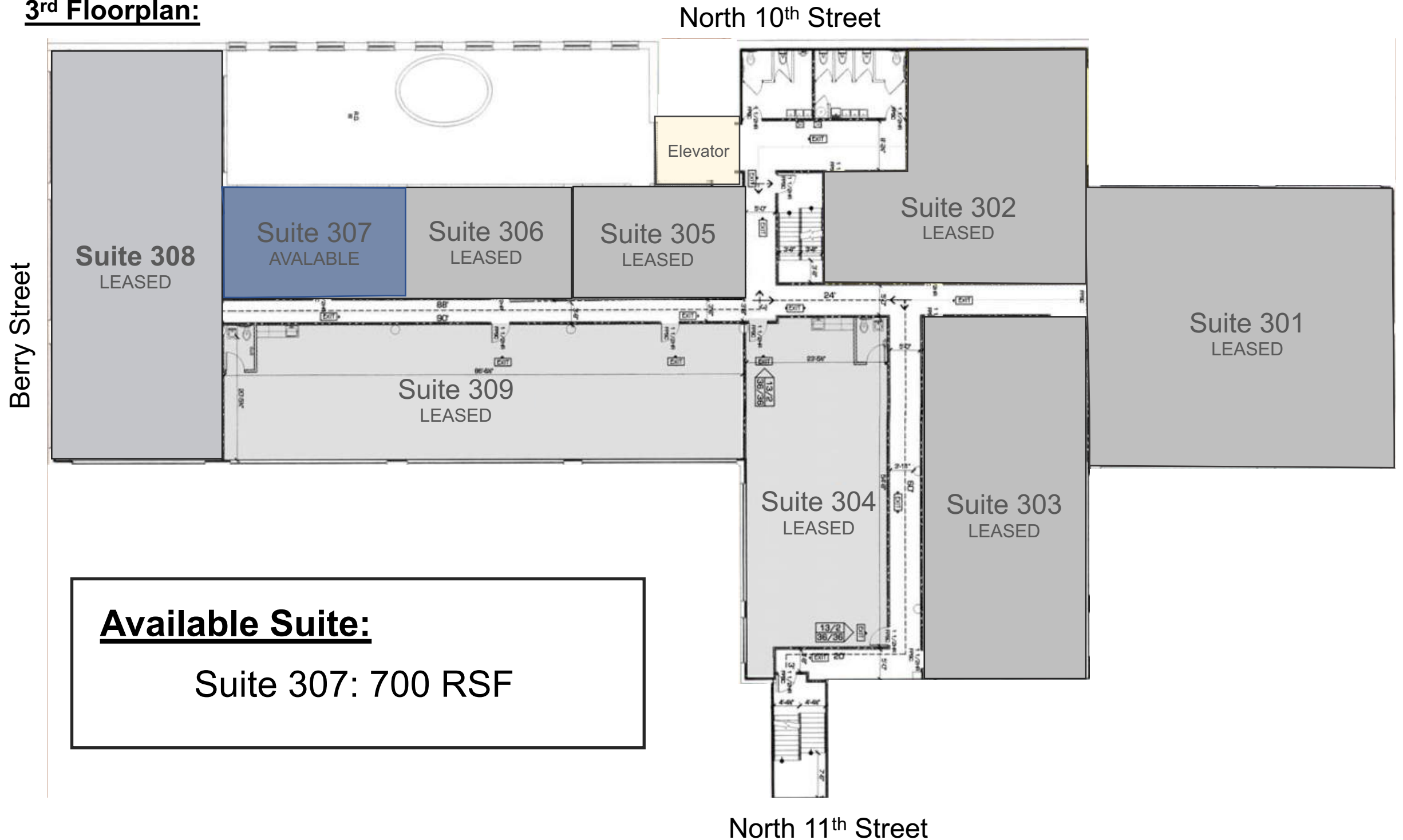
Suite 201: 7,526 RSF  
(Divisible)



# 101 North 10<sup>th</sup> Street – Suite 307

Williamsburg, Brooklyn, NY

## 3<sup>rd</sup> Floorplan:



### Available Suite:

Suite 307: 700 RSF



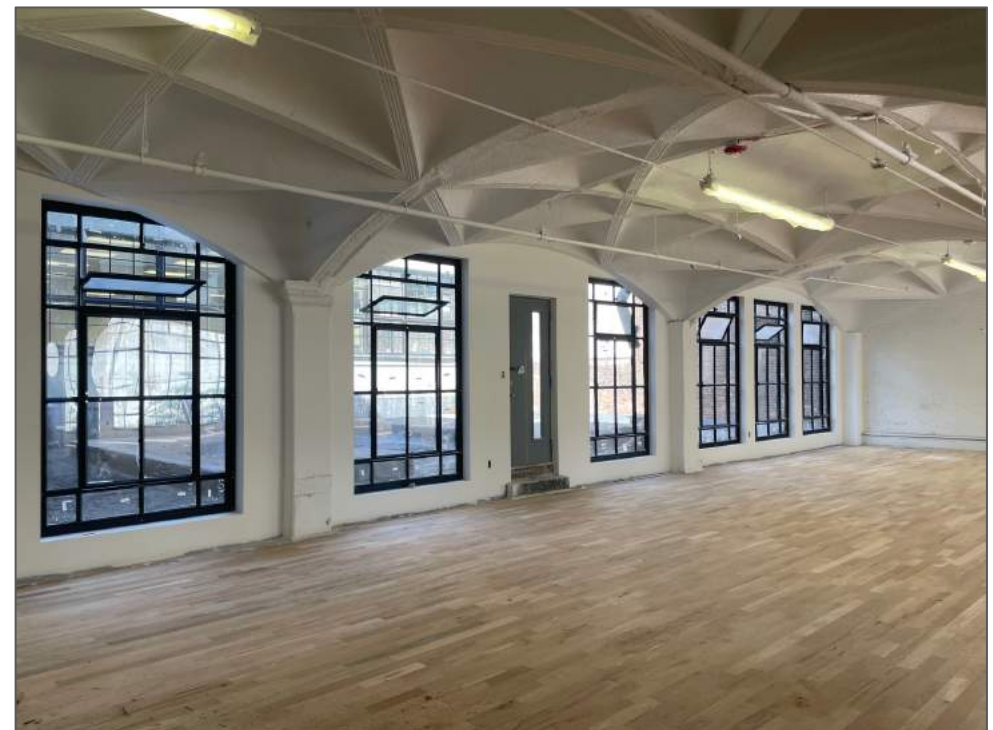




# 118 North 11<sup>th</sup> Street

Williamsburg, Brooklyn, NY

## Photos





# 118 North 11<sup>th</sup> Street

Williamsburg, Brooklyn, NY

## Photos

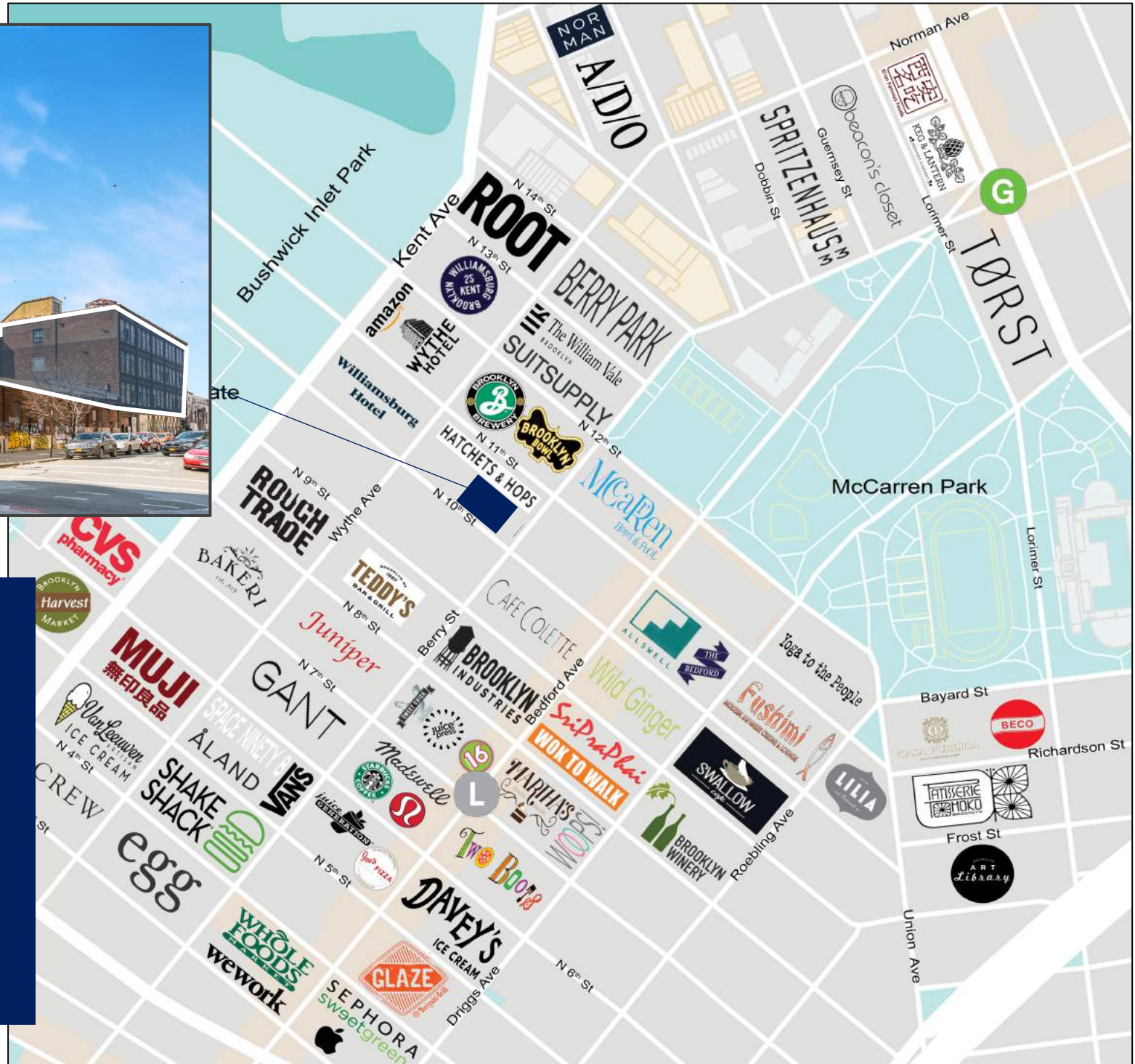




# 101 North 10<sup>th</sup> Street / 118 North 11<sup>th</sup> Street

Williamsburg, Brooklyn, NY

## Retail Map:



**Annual Subway Ridership**

- L** train is 5 min away at **Bedford Avenue** station with 9,892,516 annual ridership
- G** train is 8 min away at **Nassau Avenue** station with 2,880,235 annual ridership