

# 8500 MELROSE AVENUE

WEST HOLLYWOOD, CA 90069

RETAIL SPACE AVAILABLE



**NEWMARK**  
PACIFIC

**CBRE**

**JAY LUCHS**  
Executive Vice Chairman  
310-407-6585  
jay.luchs@nrmk.com  
CA RE Lic. #01260345  
**JAYLUCHS.COM**

**RYAN GURMAN**  
Senior Vice President  
310-650-7545  
ryan.gurman@cbre.com  
CA RE Lic. #01972081

## ADDRESS

8500 Melrose Avenue  
West Hollywood, CA 90069

## AVAILABLE USE

Space 1      Retail

## SIZE

Ground Floor: ±3,107 SF  
Mezzanine:    ±1,051 SF  
**Total:        ±4,158 SF**

## PARKING

Ample underground parking



**NEWMARK**  
PACIFIC

**CBRE**

**JAY LUCHS**  
Executive Vice Chairman  
310-407-6585  
jay.luchs@nmrk.com  
CA RE Lic. #01260345  
**JAYLUCHS.COM**

**RYAN GURMAN**  
Senior Vice President  
310-650-7545  
ryan.gurman@cbre.com  
CA RE Lic. #01972081



<b>SPACE 1</b>	Ground Floor + Mezzanine
<b>USE</b>	Retail
<b>SIZE</b>	Ground Floor: ±3,107 SF Mezzanine: ±1,051 SF <b>Total: ±4,158 SF</b>
<b>RENT</b>	Available upon Request
<b>AVAILABLE</b>	Immediately

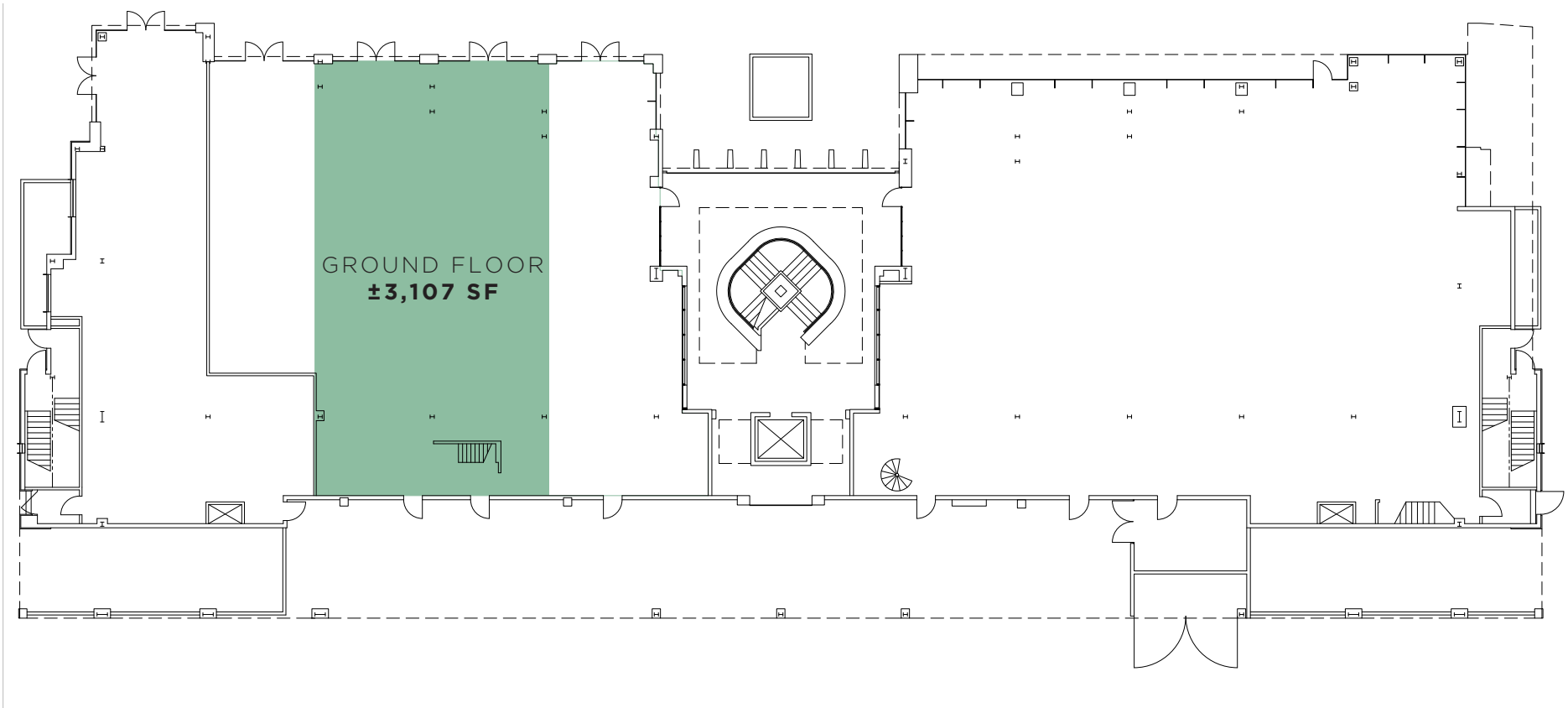
**NEWMARK**  
PACIFIC

**CBRE**

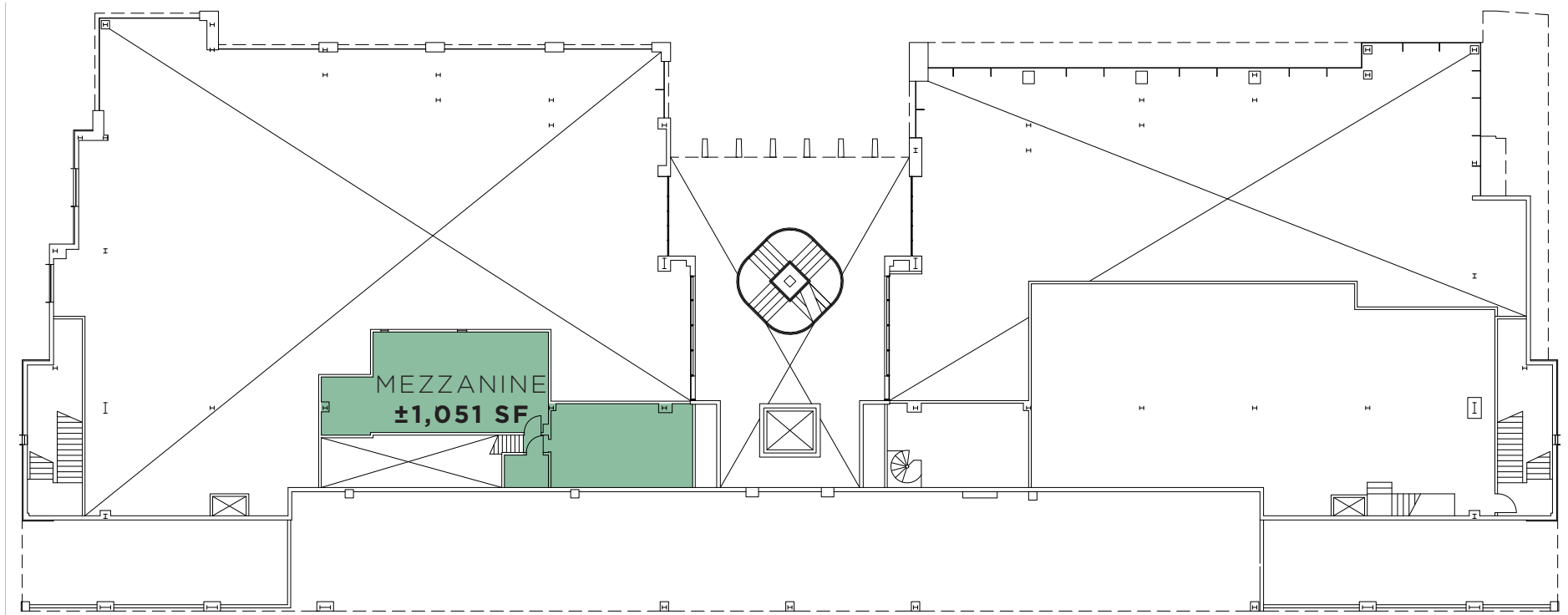
**JAY LUCHS**  
Executive Vice Chairman  
310-407-6585  
jay.luchs@nrmk.com  
CA RE Lic. #01260345  
[JAYLUCHS.COM](http://JAYLUCHS.COM)

**RYAN GURMAN**  
Senior Vice President  
310-650-7545  
ryan.gurman@cbre.com  
CA RE Lic. #01972081

**SPACE 1** GROUND FLOOR PLAN



**SPACE 1** MEZZANINE FLOOR PLAN



**BEVERLY CENTER**  
 Apple, Bloomingdale's, Balenciaga, Burberry, Dolce & Gabbana, Gucci, H&M, Louis Vuitton, Macy's, Prada, Saint Laurent, Sephora, Tocaya Modern Mexican, Tumi, UNIQLO, Versace, Yardbird, Zara, & more

Largo at the Coronet

**SOFITEL**  
HOTELS & RESORTS

**CEDARS-SINAI**

**FOUR SEASONS**  
Hotels and Resorts

**DRIES VAN NOTEN**

Raya Skin Care Salon and Spa

**SUBJECT PROPERTY**  
8500 MELROSE AVENUE

**VINCE.**

**JOE THE JUICE**

lululemon **athletica**

LA CIENEGA BLVD

**±39,356**  
CARS PER DAY

Traffic Count: Costar, TrafficMetrix 2025

**Glossier.**

**TEA**

**le PÈRE**

MELROSE AVE

P. & L.P.  
WE CULTIVATE

*Alicia & Olivia*

**NEWMARK**  
PACIFIC

**CBRE**

**JAY LUCHS**  
Executive Vice Chairman  
310-407-6585  
jay.luchs@nrmk.com  
CA RE Lic. #01260345  
**JAYLUCHS.COM**

**RYAN GURMAN**  
Senior Vice President  
310-650-7545  
ryan.gurman@cbre.com  
CA RE Lic. #01972081

ROBERTSON BOULEVARD	8755 THE BUTCHER'S DAUGHTER	8751 RE/DUNE	8747 CUIVE CHRISTIAN / Marble Systems / COUNTRY FLOORS	8737 MICHAEL CLARK / RUG	8735 Future GUZZO / CATCH Restaurant (roof top)	8715 ARTERIOS	8715 SOOLVO / THE SHADE SHED	8687 PRC	8629 1/2 Grete / COMMUNITY GOODS	8629 Decorative Sleep / atacoma	8627 atacoma	8619 Sports & Bath (coming soon) / VANDOM MUNICIPAL	8609 WHIRL CUSTOM LIGHTING	8605 VANDOM	8585 @world / am! / THE GREAT	8583 HALE BOB / HOKA	8551 F&B & BOUTE	8523-8525 Glossier. / ALFRED	8507 le PÈRE	8503 Pop up	8501 ALFRED	LA BIENEGA BOULEVARD	PARKING LOT	8483 VENROY pop up	8479 Resale	8475 CHERRY	8473 Luxbae	8471 BUNDI	8465 Under Construction	8455 CARACHEE Salon	8453 BURN	8451 ALBA	8447 @volve / Flavia Lanni	8443 Toward	8441 Wanna Buy a Watch	8435 St. Monica / Thomas / Laguna, CA	MELROSE ALLEY	8425 Pop up space, future development	8419 A.P.C.	8407 Leased	8409 KHAITE
---------------------	--------------------------------	-----------------	---	-----------------------------	--	------------------	---------------------------------	-------------	-------------------------------------	------------------------------------	-----------------	--	-------------------------------	----------------	----------------------------------	-------------------------	---------------------	---------------------------------	-----------------	----------------	----------------	----------------------	-------------	-----------------------	----------------	----------------	----------------	---------------	----------------------------	------------------------	--------------	--------------	-------------------------------	----------------	---------------------------	--	---------------	--	----------------	----------------	----------------

ROBERTSON BOULEVARD	8764 CECCONIS / Future RH	8750 Leased / Richard Mulligan / john varriatou	8746 ANNE HAUCK	8738 FORMATIONS / Dennis & Lena / Silver Springs	8720 8710 GUESS (coming soon)	8686 THUMA (coming soon) / zinique	8684 8678 8674 8674 BEN SOLEIMANI Antiques / Future GENTLE MONSTER	8650 NORWICH AVENUE / JANET YONATY	8642 8636 8632 Samuel's Rug Gallery / Ancient Moderne	HUNTLEY AVENUE	8620 8618 8612 SALOMON / THOR	WESTBOURNE DRIVE	8580-8582 MANSOUR / RH / flagship	8550 8540 8538 8532 MARTYN LAWRENCE BULLARD / VINCE. / JOE - THE JUICE	8500 8498 8486 8466 8454 8448 8444 8440 CHEZ AIA / Reebok / LAB / Red Fish / housecb / Frame Hardwood / cult gaia	N. CROFT AVENUE	8428 8422 8420 8414 8412 8406 8404 8400 adidas For Lease / G-STAR RAW / BEAT THE RUNWAY / SILK LAUNDRY / ETAI / MEJURI / AWAY
---------------------	------------------------------	--	--------------------	---	-------------------------------------	---------------------------------------	--	---------------------------------------	--	----------------	--	------------------	--------------------------------------	--	---	-----------------	---

## NEIGHBORING TENANTS



The RealReal



WOLF & BRIDGER



Glossier.



TEA @ Glossier. alley



lululemon athletica



THE GREAT.



Rosalinde



rosalina.com



RH



DESIGN WITHIN REACH

The information contained herein has been obtained from sources deemed reliable but has not been verified and no guarantee, warranty or representation, either express or implied, is made with respect to such information. Terms of sale or lease and availability are subject to change or withdrawal without notice.

**NEWMARK**  
PACIFIC  
Corporate RE Lic. #01796698

**CBRE**  
Corporate RE Lic. #00409987

**JAY LUCHS**  
Executive Vice Chairman  
310-407-6585  
jay.luchs@nmrk.com  
CA RE Lic. #01260345  
**JAYLUCHS.COM**

**RYAN GURMAN**  
Senior Vice President  
310-650-7545  
ryan.gurman@cbre.com  
CA RE Lic. #01972081