



CBRE



**3125 WEST
EXECUTIVE PARKWAY**

LEHI, UTAH | UP TO 4,628 RSF AVAILABLE

For Lease



PROPERTY HIGHLIGHTS

\$24.00 Per Sq. Ft., Full Service Gross

Availability

First Floor: Approx. 4,628 RSF
Second Floor: Now Fully Leased
Third Floor: Now Fully Leased

Easy Access to I-15

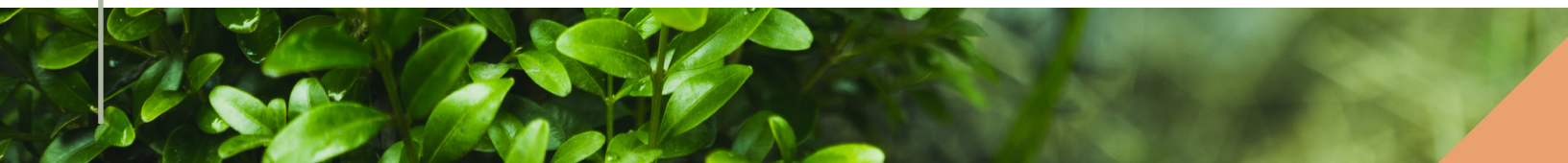
5/1,000 SF Parking Ratio

Close Proximity to Amenities

Walking Distance to FrontRunner

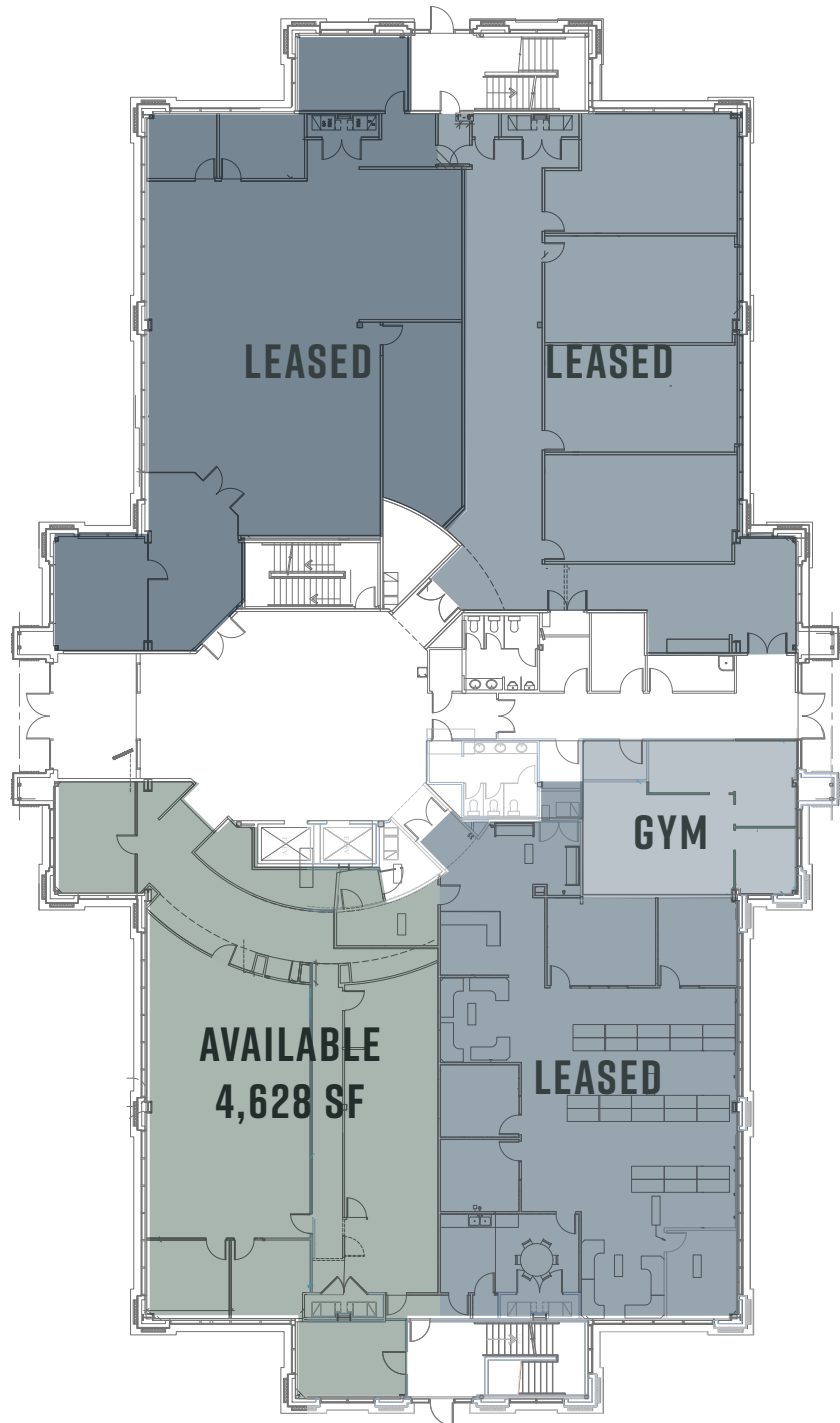


PHOTOS

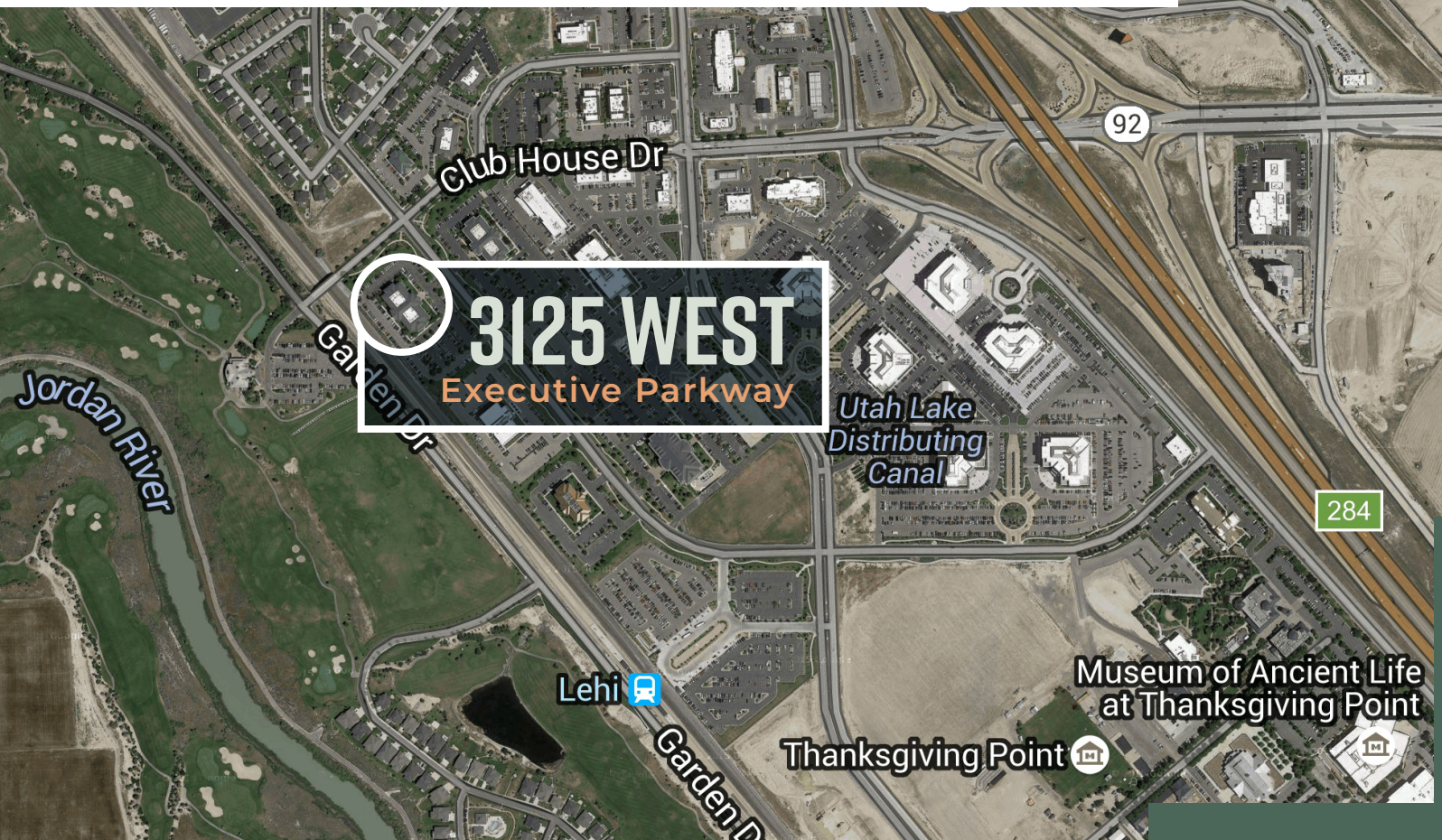


AVAILABLE SPACE

First Floor: 4,628 Sq. Ft.



PROPERTY LOCATION



CONTACT US

JAMES MECHAM

First Vice President

+1 801 869 8028

james.mecham@cbre.com

© 2023 CBRE, Inc. All rights reserved. This information has been obtained from sources believed reliable, but has not been verified for accuracy or completeness. You should conduct a careful, independent investigation of the property and verify all information. Any reliance on this information is solely at your own risk. CBRE and the CBRE logo are service marks of CBRE, Inc. All other marks displayed on this document are the property of their respective owners, and the use of such logos does not imply any affiliation with or endorsement of CBRE. Photos herein are the property of their respective owners. Use of these images without the express written consent of the owner is prohibited.

www.cbre.com/saltlakecity

CBRE