



A RETAIL LEASING OPPORTUNITY:

Wall Street Place

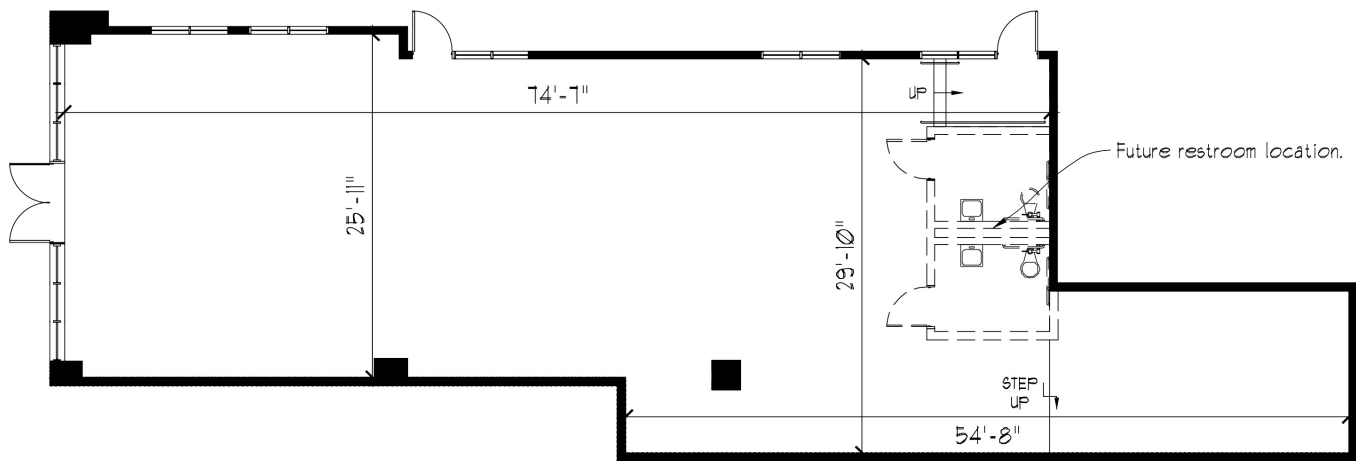
61 WALL STREET, NORWALK CT



HATHAWAY



CONTACT 203.814.3361 • RENTALS@HATHAWAYPM.COM
HATHAWAY, INC. • 1387 SEAVIEW AVENUE, BRIDGEPORT, CT 06607 • HATHAWAYPM.COM



RETAIL SPACE A

Scale = 3/32" = 1'-0"

- 2,289 NSF
- Space with rough-in plumbing for 2 restrooms.

County: Fairfield

City: Norwalk

Available S.F: 2,289

Terms: \$32/S.F. NNN

Lease Length Desired: 3-5 years

Availability: July 2026

PROPERTY OVERVIEW:

Available for a three to five-year lease, "Suite A" offers a highly visible retail space with frontage on Wall Street. This spacious unit provides 2,289 S.F. and would be ideal for a deli or a fast-casual restaurant. Positioned perfectly in the heart of the Norwalk Renaissance, each ground-floor space at Wall Street Place features high ceilings, large display windows, and is ready for your custom build-out. Employee and customer parking is available in the convenient Art Park Lot as well as on-street parking.

LOCATION OVERVIEW:

Wall Street Place is close to the Norwalk Public Library, Norwalk Post Office, the Wall Street Theater and Freese Park, as well as public transportation to easily access other parts of the city and region. Residents will benefit from the City of Norwalk's investment in the surrounding area, including safer intersections, wider sidewalks, public outdoor event spaces, outdoor dining spaces, bike and walking trail connections, and increased street parking. For additional information about Norwalk's Renaissance, please visit Norwalkct.gov/3207/Project-Design-Status.



CONTACT 203.814.3361 • RENTALS@HATHAWAYPM.COM
HATHAWAY, INC. • 1387 SEAVIEW AVENUE, BRIDGEPORT, CT 06607 • HATHAWAYPM.COM



HATHAWAY

WALL
STREET
PLACE