

FOR SALE

RESTAURANT

712 STATE HWY 55 HAMEL, MN



COLDWELL BANKER
COMMERCIAL
REALTY



Price

\$785,000

Property Features

- ❖ Almost 1800 sq ft w/ Full Kitchen
- ❖ 12'ft Commercial Hood
- ❖ Walk-in Cooler
- ❖ Smoker, steamer, grill & 4 top stove
- ❖ 2 Bathrooms
- ❖ Parking lot w/2 driveways .46 acres
- ❖ All restaurant equipment included





Biz Information

- ❖ Chuckwagon Catering
- ❖ Customer list
- ❖ Includes equipment
- ❖ Includes Vans
- ❖ Email for entire equipment list



- ❖ Busy Hwy 55 area.
- ❖ Busy industrial area
- ❖ Lots of residential housing being built

Craig Weber (612) 968-0839
E) craig.weber@cbburnet.com

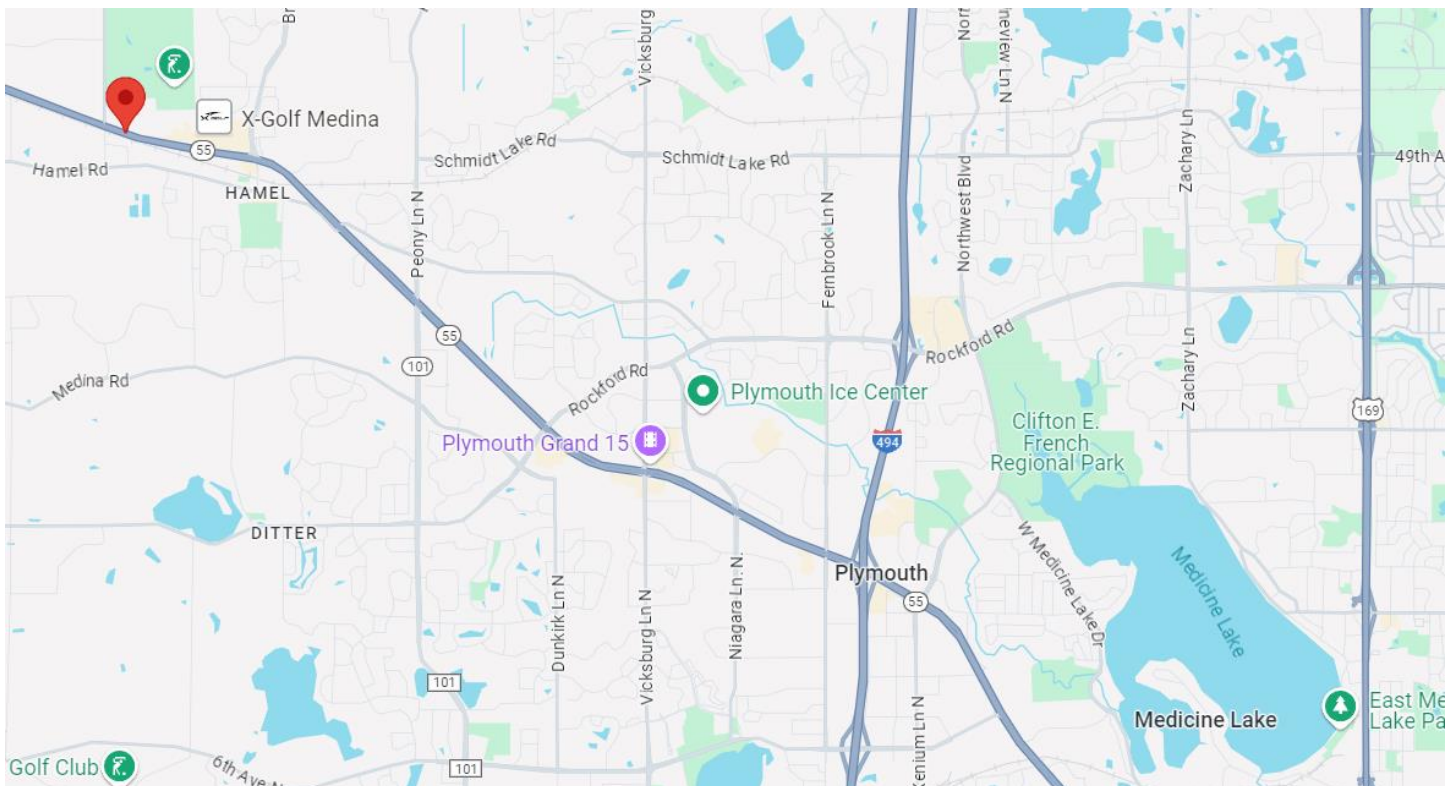
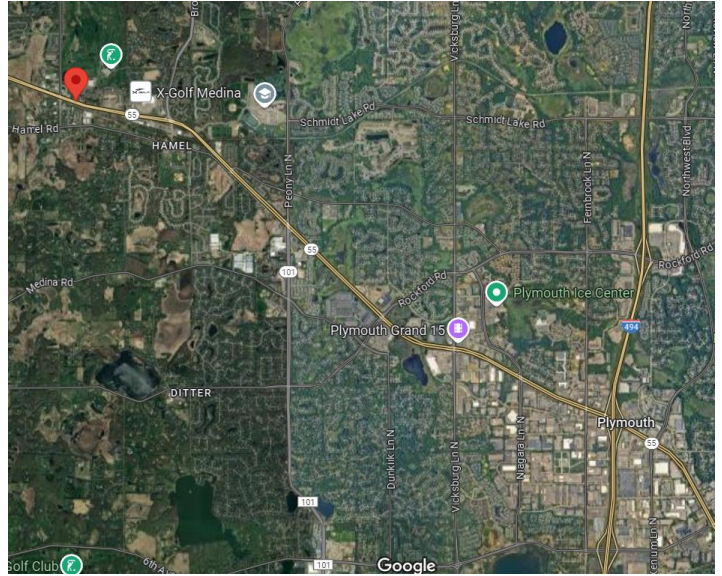


COLDWELL BANKER COMMERCIAL REALTY • 1715 Yankee Doodle Rd #110 EAGAN, MN 55121
•Cell 612-968-0839• WWW.CBCWORLDWIDE.COM

5 Mile Area Demographics

- ❖ Population: 90,428
- ❖ Median Household Income: \$149,359
- ❖ Median Home Value: \$675,000
- ❖ Traffic: Hwy 55 VPD 26,342

712 State Hwy 55 Hamel, MN 55340



Craig Weber (612) 968-0839
E) craig.weber@cbburnet.com



COLDWELL BANKER
COMMERCIAL
REALTY

Coldwell Banker Commercial / JAC Commercial Group

Craig Weber (612)-968-0839 craig.weber@cbburnet.com

Allan Zolin (651)-341-8196 allan.zolin@cbrealty.com