

Freestanding Building Available

+/-3,620 SF Freestanding Building For Sale or Lease

16732 W 159th Street | Lockport, Illinois 60441



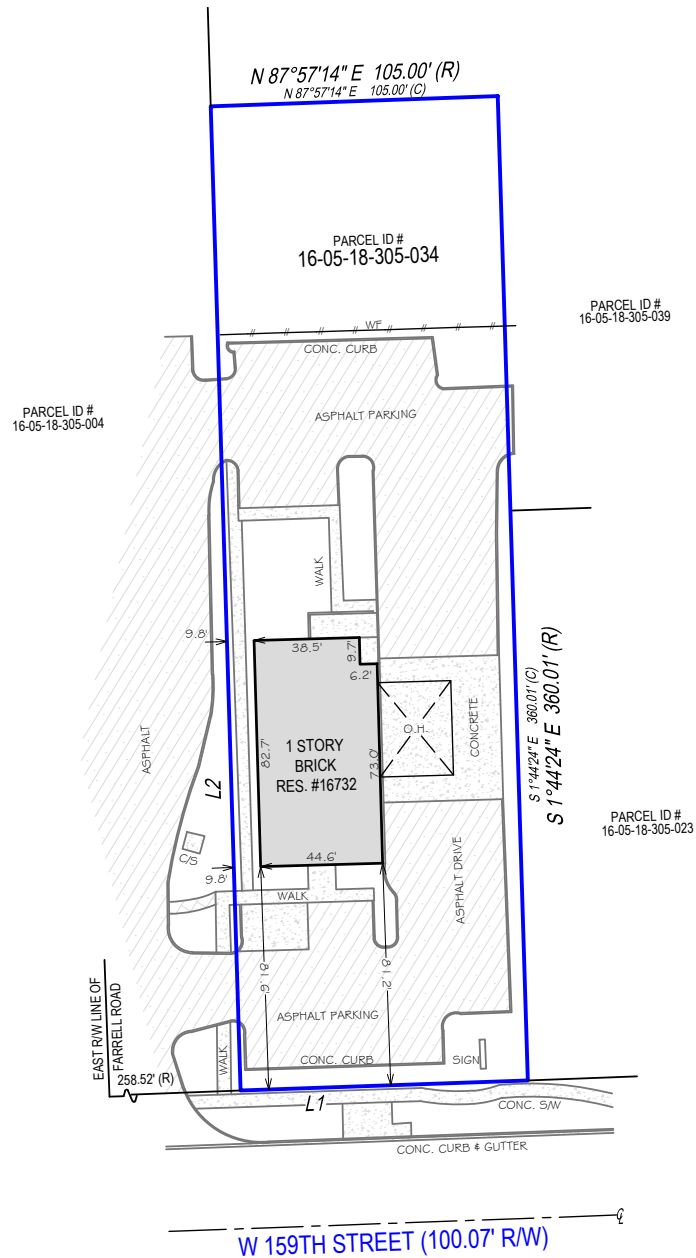
Property Information

- + +/- 3,620 SF Freestanding building
- + Former Bank Building with drive-thru lanes and windows still in-tact
- + Shared access with Walgreens from two streets. 159th Street and Farrell Road.
- + Immediate access to I-55
- + Low taxes in Will County
- + Close Proximity To Lockport Township High School, Lewis University And Downtown Lockport
- + Jewel-Osco, Aldi, and Walmart Supercenter in the surrounding area.

Freestanding Building Available
 16732 W 159th Street | Lockport, Illinois 60441

For Sale or Lease

Site Plan & Demographics



Demographics	3 Mile	5 Mile	7 Mile
Population	34,495	98,586	253,352
Average HH Income	\$128,057	\$126,203	\$115,557
Daytime Population	28,587	80,222	230,147
Employees	9,926	29,460	92,531

Traffic Counts	
W 159th Street	22,200 VPD
Farrell Road	11,400 VPD

Freestanding Building Available

16732 W 159th Street | Lockport, Illinois 60441 60714 60714

For Sale or Lease



Contact Us

Les Kristof
Vice President
+1 630 573 1282
Les.Kristof@cbre.com

© 2025 CBRE, Inc. All rights reserved. This information has been obtained from sources believed reliable but has not been verified for accuracy or completeness. CBRE, Inc. makes no guarantee, representation or warranty and accepts no responsibility or liability as to the accuracy, completeness, or reliability of the information contained herein. You should conduct a careful, independent investigation of the property and verify all information. Any reliance on this information is solely at your own risk. CBRE and the CBRE logo are service marks of CBRE, Inc. All other marks displayed on this document are the property of their respective owners, and the use of such marks does not imply any affiliation with or endorsement of CBRE. Photos herein are the property of their respective owners. Use of these images without the express written consent of the owner is prohibited.