



1800
Alexander Bell Drive

RESTON'S

BEST VALUE

BUILDING FEATURES



Debt Free Building Under Strong New Ownership



Updated Common Areas & Bathrooms



New Conference Center



Multiple Balconies Available



On-site Fitness Facility, Locker Rooms



W&OD Trail Adjacent to Building



Convenient Access to Dulles Toll Road, Reston Town Center & Wiehle-Reston East Metro



3.5/1,000 RSF Parking Ratio



Covered Parking Available



CONFERENCE CENTER



RENOVATED LOBBY

CAPITAL IMPROVEMENT

\$2.6M

Capital Expenditures Since 2018

\$1.8M

HVAC System

\$450k

Building Waterproofing

\$175k

Lobby Entrance Update

\$90k

Corridors Update

\$4.1M

Tenant Improvements

THE OPPORTUNITY

1800 Alexander Bell Drive is the place to be...



15 shopping centers within a 10-minute drive offers a diverse & thriving amenity base



Toll Road proximity allows quick access to downtown Washington, multiple airports & a broad retail base



One mile from Wiehle-Reston Silver Line station



Silver Line's second phase opened in 2020 with connectivity to Reston Town Center, Dulles International Airport and Loudoun County



AVAILABILITY

5	Suite 520 1,580 RSF			
4	Suite 400 5,346 RSF <i>Office Intensive</i>			
3				
2	Suite 200 3,592 RSF			
1	Suite 120 6,533 RSF	Suite 130 4,072 RSF		
P	Suite P-100 3,560 RSF		Suite P-130 4,274 RSF	Conference Center

Available Amenity Leased

\$27/SF
Rental Rate
Base Year Lease

\$35/SF
Tenant Improvement Allowance
or
Move-In Ready

- Landlord has ability to finance more tenant improvement allowance
- Ability to fund tenant improvement allowance without lender approval

RESTON, VIRGINIA

THE AREA

Situated in the heart of the Dulles Tech Corridor, Reston, Virginia was voted in 2018 as one of the Best Places to Live in Virginia by Money Magazine. Virginia's first planned community, Reston combines a strategic business location midway between Washington DC and Dulles International Airport, with walkable, quality of life-enhancing amenities that include Metro, Reston Town Center and numerous community benefits such as the W&OD walk/bike path.

SHOPPING

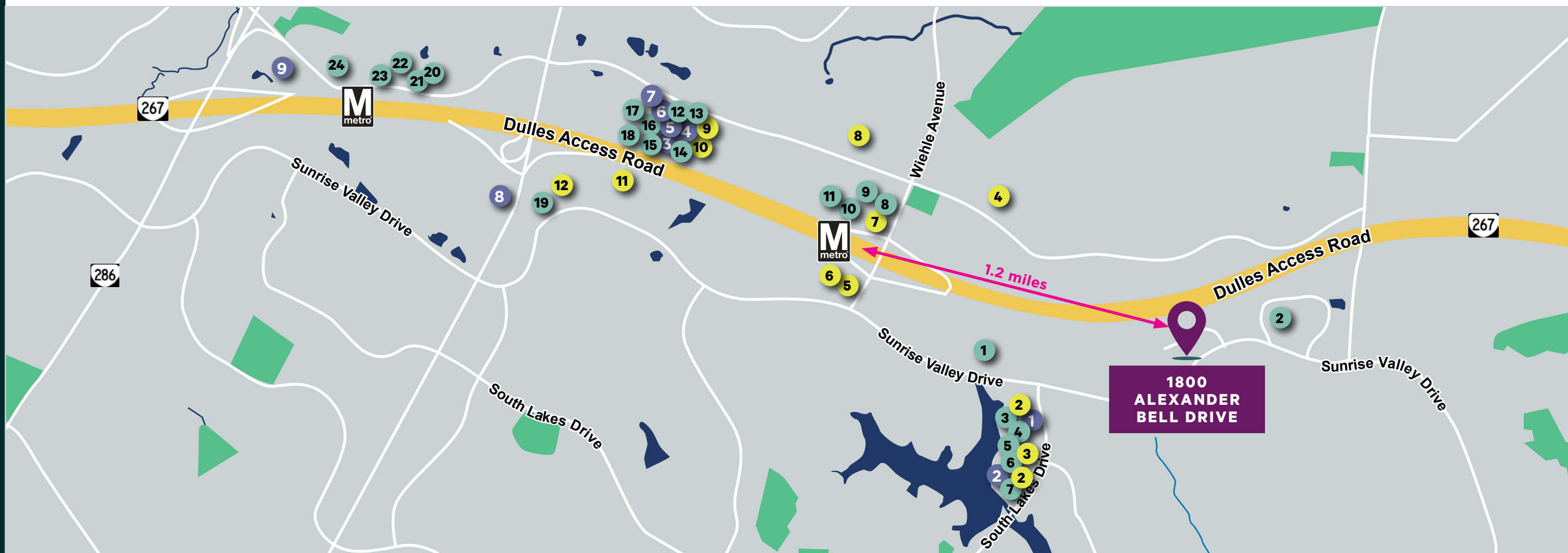
- 1 Safeway
- 2 CVS
- 3 Whole Foods
- 4 LOFT
- 5 CVS
- 6 Michael's
- 7 Total Wine
- 8 Wegmans
- 9 Target

DINING

- 1 Carolina's Deli
- 2 Uptown Cafe
- 3 Lakeside Asia Cafe
- 4 Cafesano
- 5 Red's Table
- 6 The Red Bird
- 7 Starbucks
- 8 Matchbox
- 9 Founding Farmers
- 10 Davio's Northern Italian Steakhouse
- 11 Big Buns
- 12 Zoe's Kitchen
- 13 Brown Bag
- 14 Bonchon
- 15 Tropical Smoothie
- 16 Five Guys
- 17 The Melting Pot
- 18 Saa Thai & Sushi
- 19 MyHome Thai Bistro
- 20 Tiki Thai
- 21 Kook Dogg Cafe
- 22 Nando's PERi-PERi
- 23 Cooper's Hawk
- 24 Chick-fil-A

LIFESTYLE

- 1 Truist
- 2 The UPS Store
- 3 Hand & Stone Massage
- 4 SkateQuest
- 5 Fed-Ex Office Center
- 6 United Bank
- 7 Scissors & Scotch
- 8 OneLife Fitness
- 9 Truist
- 10 Spa Noa
- 11 The Westin Hotel - Reston
- 12 Sheraton Hotel - Reston



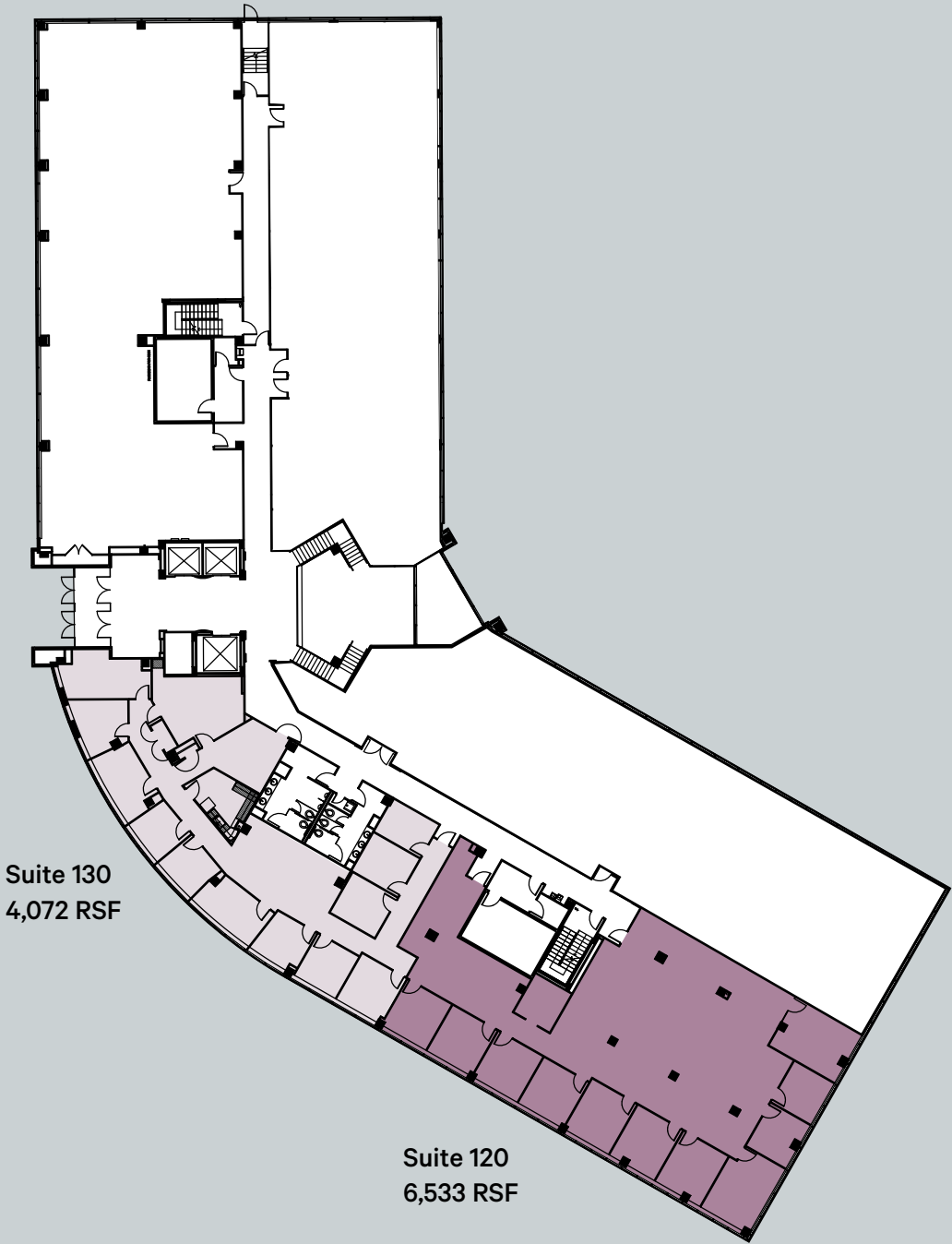
1800 ALEXANDER BELL DRIVE

PLAZA FLOOR

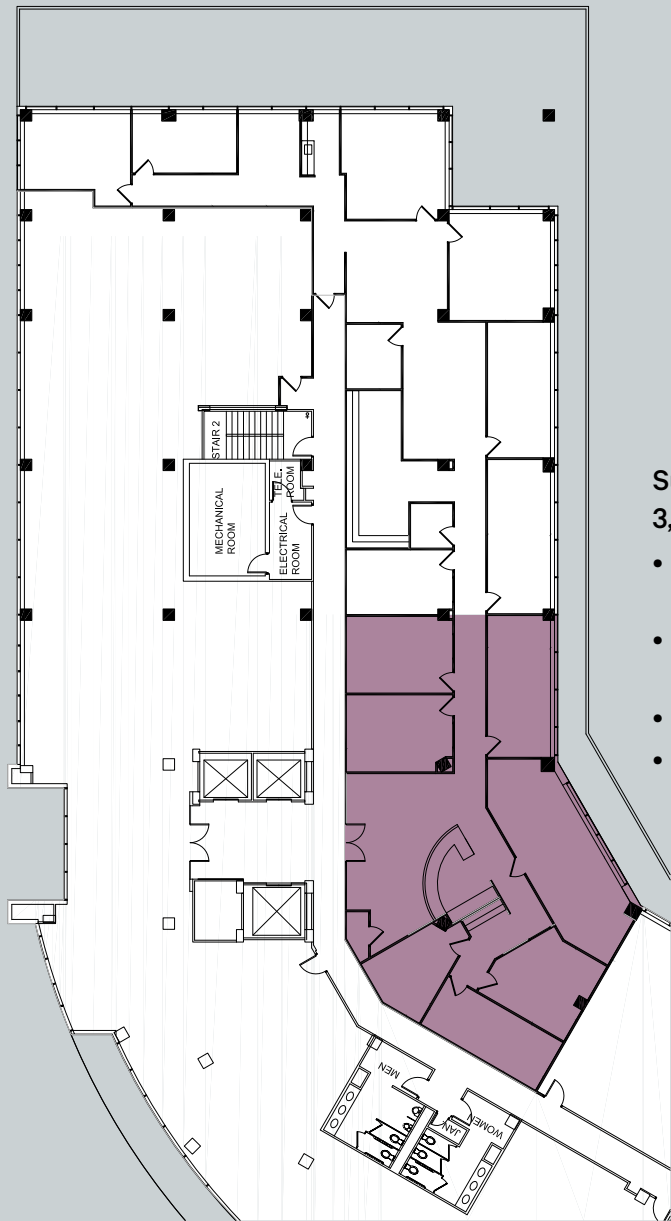


1800 ALEXANDER BELL DRIVE

FIRST FLOOR

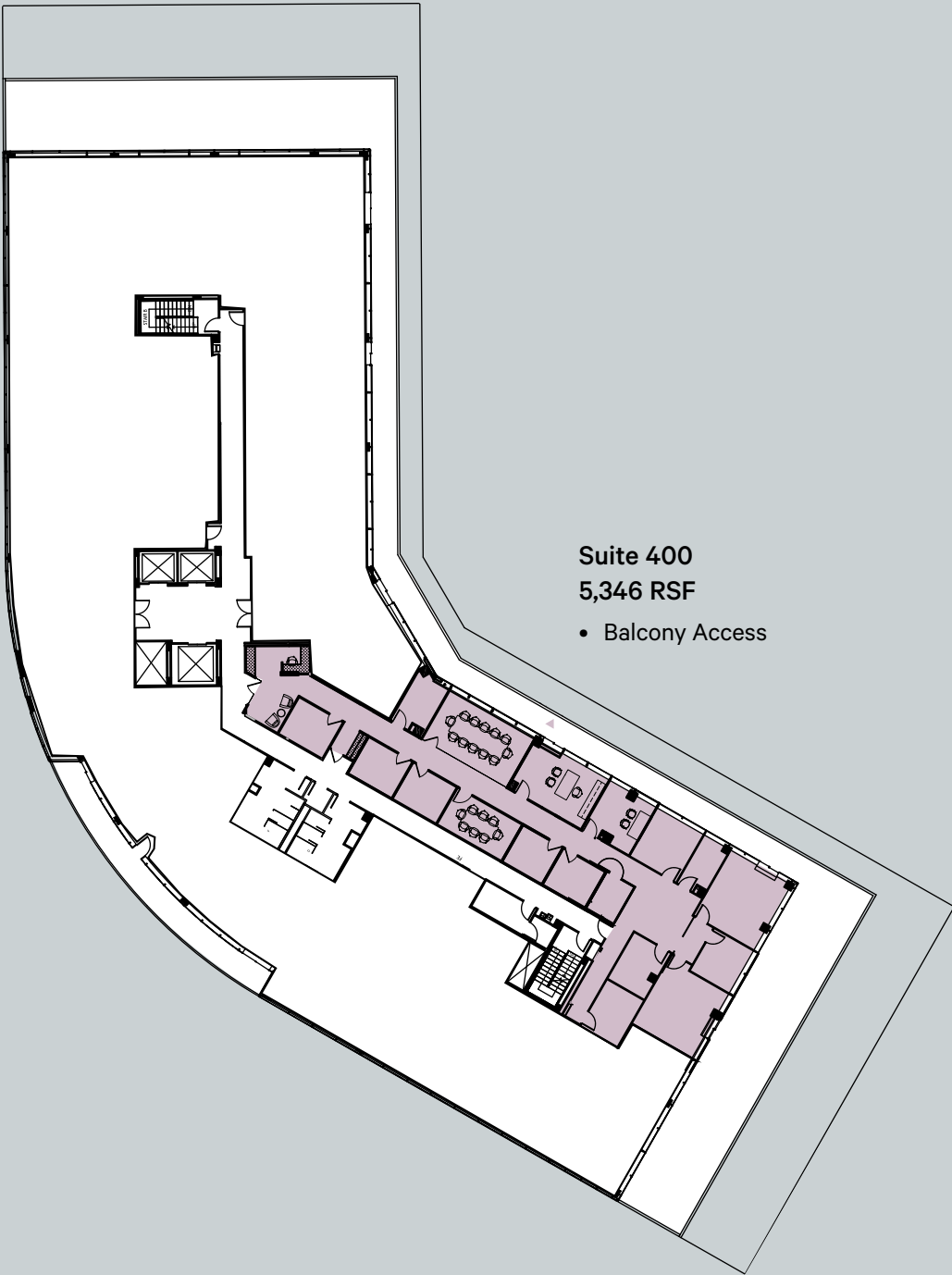


SECOND FLOOR



- Suite 200**
3,592 RSF
- Prominent Elevator Lobby Exposure
 - Tenant-exclusive Balcony
 - Occupancy – 90 Days
 - Furniture Available

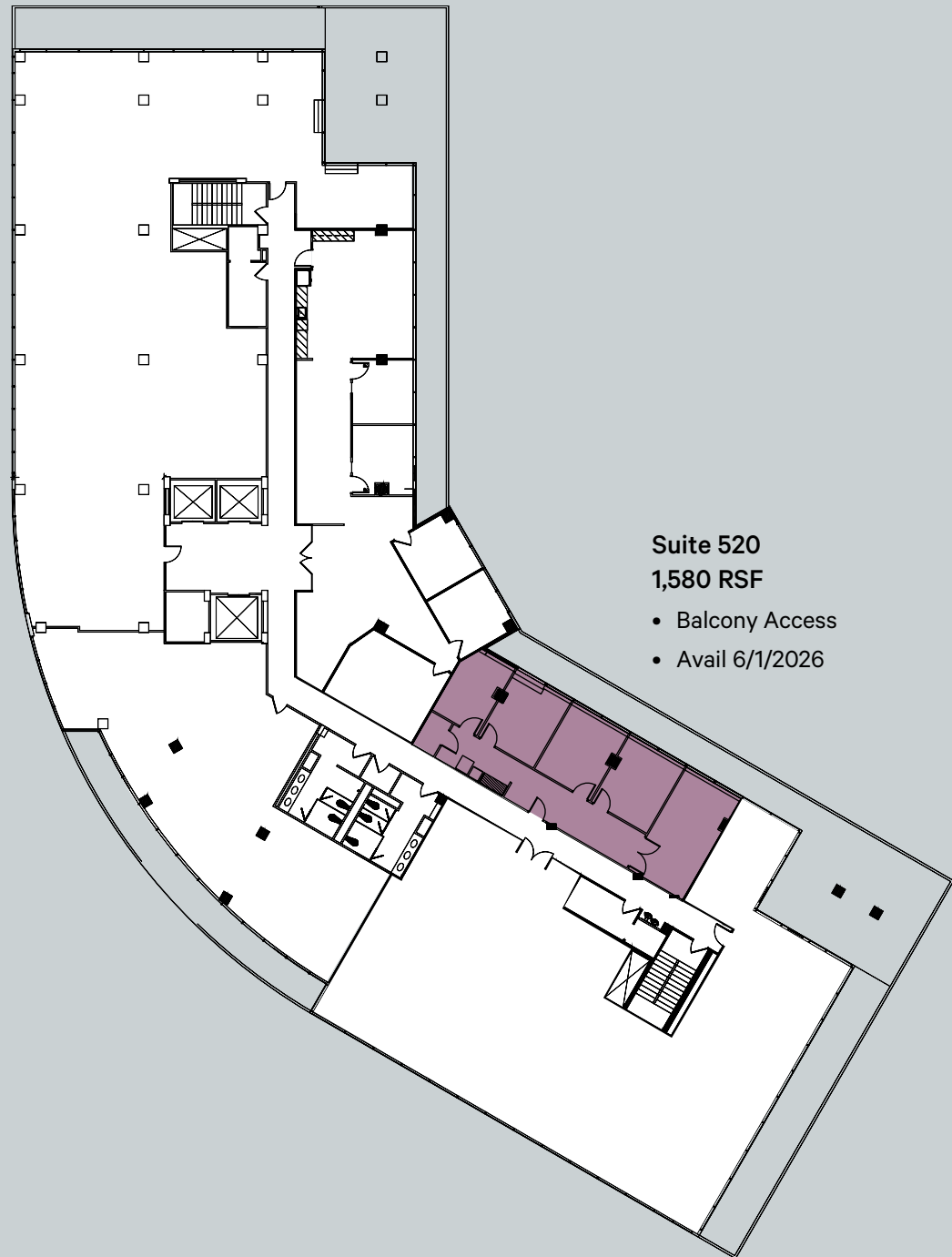
FOURTH FLOOR



- Suite 400**
5,346 RSF
- Balcony Access

1800 ALEXANDER BELL DRIVE

FIFTH FLOOR



Suite 520
1,580 RSF
• Balcony Access
• Avail 6/1/2026



1800
Alexander Bell Drive



1800

Alexander Bell Drive

Contact Us

John DiCamillo

+1 703 734 4723

john.dicamillo@cbre.com

Miles Collins

+1 703 554 5393

miles.collins@cbre.com

© 2025 CBRE, Inc. All rights reserved. This information has been obtained from sources believed reliable, but has not been verified for accuracy or completeness. You should conduct a careful, independent investigation of the property and verify all information. Any reliance on this information is solely at your own risk. CBRE and the CBRE logo are service marks of CBRE, Inc. All other marks displayed on this document are the property of their respective owners, and the use of such logos does not imply any affiliation with or endorsement of CBRE. Photos herein are the property of their respective owners. Use of these images without the express written consent of the owner is prohibited.

The CBRE logo, consisting of the letters "CBRE" in a bold, dark teal, sans-serif font.