

Affordable Downtown Ft Myers

1922 VICTORIA AVENUE, FORT MYERS, FL 33901

FOR LEASE

275/SF Storage/Garage



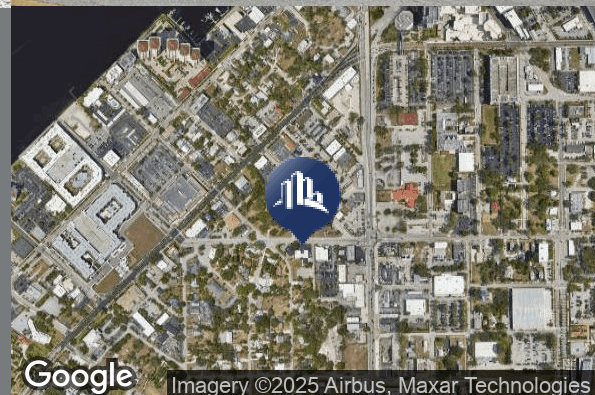
CALL THERESA TODAY

- \$300/monthly
- Gross Lease
- Enclosed 275 Sq Ft
- Secure
- Private Access
- Call Theresa Today!
- !Habla Espanol!



CALL THERESA TODAY

Clean and quaint office building nestled in Downtown Fort Myers.
Affordable garage space available.
Downtown Ft Myers.
Store Stuff!...then add More Stuff!
Call Theresa Today! !Habla Espanol!



Theresa Blauch-Mitchell, CCIM
1922 VICTORIA AVE STE C FT MYERS, FL 33901
239.265.2628
theresa@ccim.net
FL #BK3202944

Each office independently owned and operated.

We obtained the information above from sources we believe to be reliable. However, we have not verified its accuracy and make no guarantee, warranty or representation about it. It is submitted subject to the possibility of errors, omissions, change of price, rental or other conditions, prior sale, lease or financing, or withdrawal without notice. We include projections, opinions, assumptions or estimates for example only, and they may not represent current or future performance of the property. You and your tax and legal advisors should conduct your own investigation of the property and transaction.

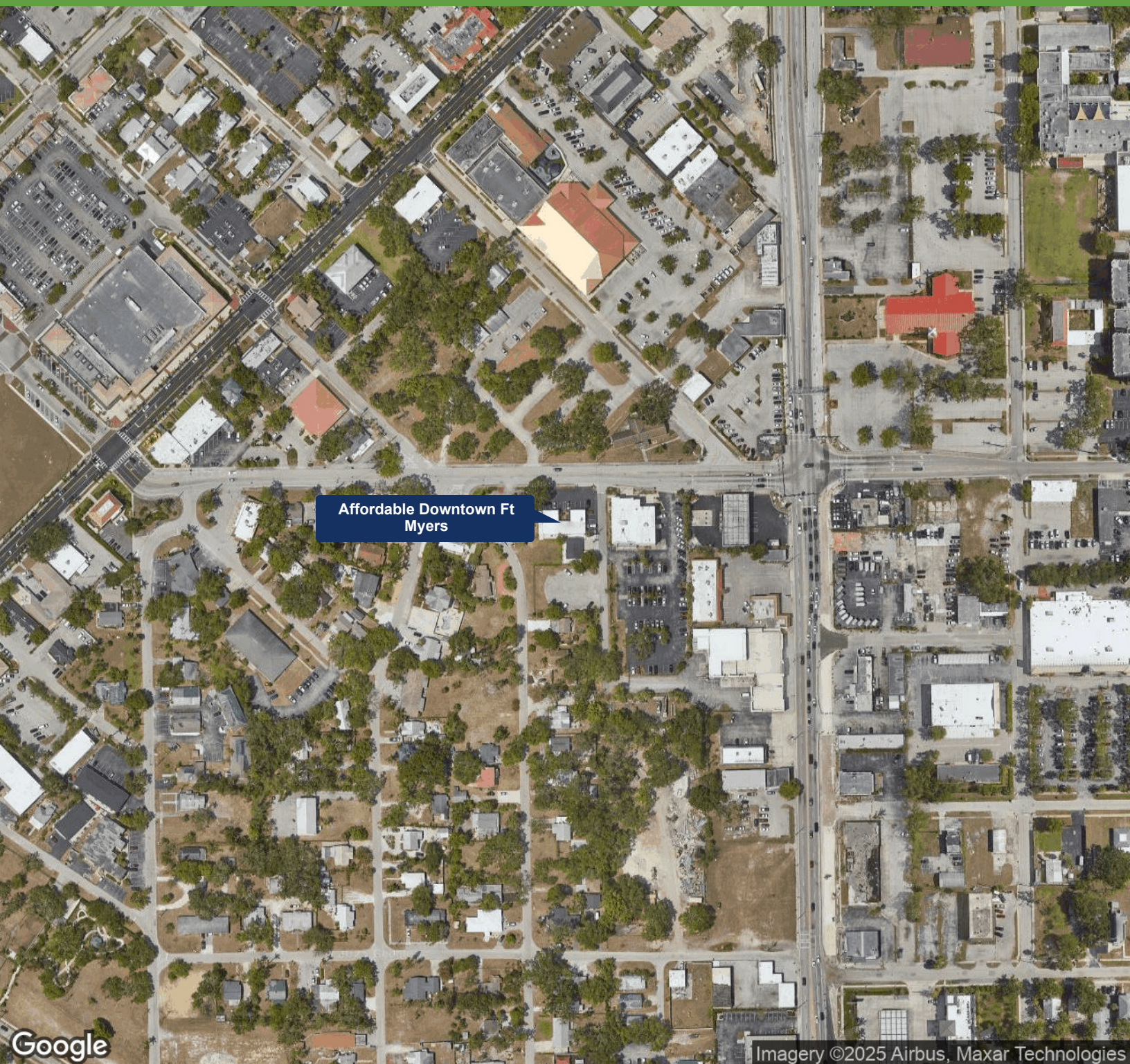
www.SperryCGA.com

Affordable Downtown Ft Myers

1922 VICTORIA AVENUE, FORT MYERS, FL 33901

FOR LEASE

Office Building



Theresa Blauch-Mitchell, CCIM
1922 VICTORIA AVE STE C FT MYERS, FL 33901
239.265.2628
theresa@ccim.net
FL #BK3202944

Each office independently owned and operated.

We obtained the information above from sources we believe to be reliable. However, we have not verified its accuracy and make no guarantee, warranty or representation about it. It is submitted subject to the possibility of errors, omissions, change of price, rental or other conditions, prior sale, lease or financing, or withdrawal without notice. We include projections, opinions, assumptions or estimates for example only, and they may not represent current or future performance of the property. You and your tax and legal advisors should conduct your own investigation of the property and transaction.

www.SperryCGA.com