

±706 SF - ±1,696 SF OFFICE SPACE
AVAILABLE FOR LEASE
4849 RONSON COURT, SAN DIEGO, CA 92111



JOSH WEST, SIOR
Senior Vice President/Partner | Lic. #01923375
858.458.3358 | jwest@voitco.com

BRIAN MULVANEY, SIOR, CCIM
Senior Vice President/Partner | Lic. #00938944
858.458.3372 | bmulvaney@voitco.com

Voit
REAL ESTATE SERVICES



BUILDING FEATURES

SUITE **SIZE** **AVAILABILITY**

105 ±1,696 SF 02/01/2026

208 ±706 SF 02/01/2026

±30,000 SF
BUILDING SIZE

YES
ELEVATOR SERVED

TWO (2)
STORIES

MULTI
TENANCY

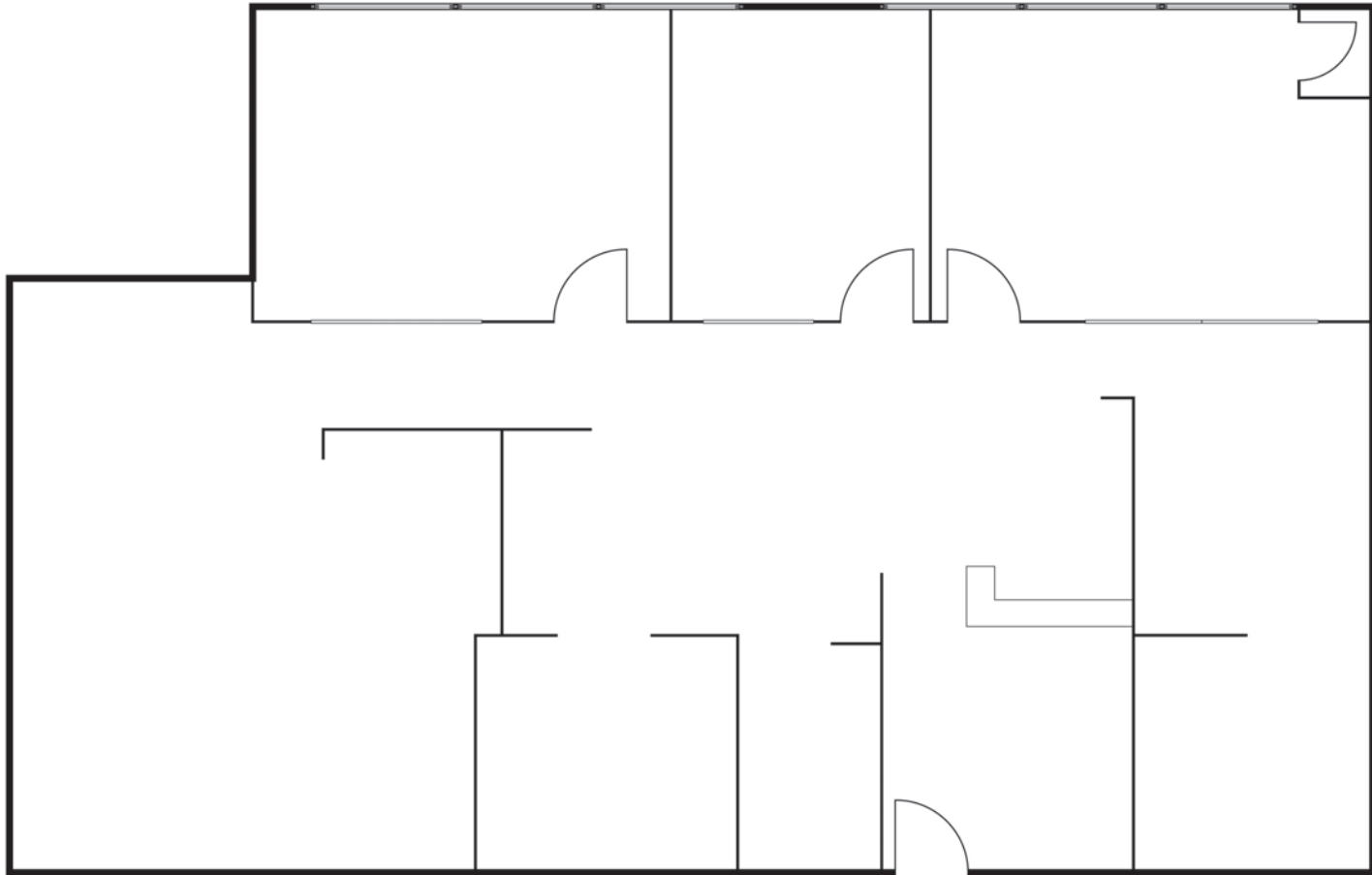
1978/2009
YEAR BUILT/RENOVATED

±4.00/1,000 SF
PARKING RATIO

IS-2-1
ZONING

KEARNY MESA
SUBMARKET

FLOOR PLAN

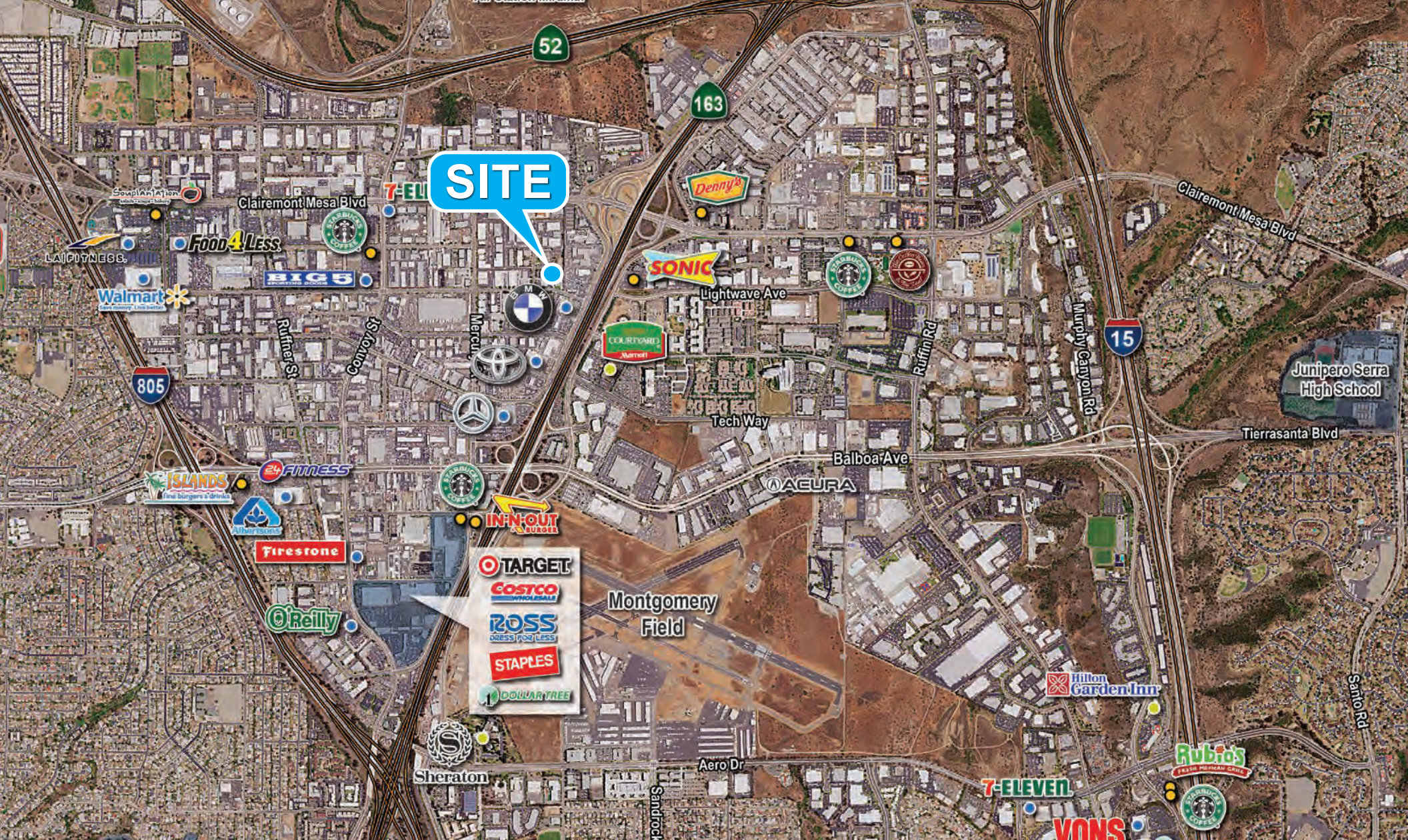


SUITE: 105 | **SIZE:** ±1,696 SF | **AVAILABILITY:** 02/01/2026
RATE: \$1.75 /SF/MO. + ELECTRICITY (\$0.30 PSF/MO.)

FLOOR PLAN

FLOOR PLAN PENDING

SUITE: 208 | **SIZE:** ±706 SF | **AVAILABILITY:** 02/01/2026
RATE: \$1.75 /SF/MO. + ELECTRICITY (\$0.30 PSF/MO.)



JOSH WEST, SIOR

Senior Vice President, Partner | Lic. #01923375

858.458.3358 | jwest@voitco.com

BRIAN MULVANEY, SIOR, CCIM

Senior Vice President, Partner | Lic. #00938944

858.458.3372 | bmulvaney@voitco.com

Voit

REAL ESTATE SERVICES

4180 La Jolla Village Drive, Suite 100, La Jolla, CA 92037 • 858.453.0505 • 858.408.3976 Fax • Lic #01991785 • www.voitco.com

Licensed as a Real Estate Salespersons by the DRE. The information contained herein has been obtained from sources we deem reliable. While we have no reason to doubt its accuracy, we do not guarantee it. ©2025 Voit Real Estate Services, Inc. All Rights Reserved.