



SW Building (office)



SE Building

35,864± SF

2.27± AC

\$2,375,000



NE Building



NW Building

19 NW 16th Street
OKC, Oklahoma
73103

INDUSTRIAL COMPLEX FOR SALE

CBRE

PROPERTY HIGHLIGHTS

Spec Type	Spec Details
Building Size	35,864 ± SF (4 buildings)
Office Size	6,840 ± SF Recently redone with recessed LED lighting (2 stories)
Land Size	2.27± AC
Zoning	I-2 (Moderate Industrial) Adjacent lot is C-4 (General Commercial)
Dock High Doors	Three (3) 12' x 12'
Grade-Level Doors	One 10' x 8', one 12' x 12', one 12' x 14', two 12' x 12', two sliding doors
Power	400 Amps, 120/240 Volts, 3-Phase
Lighting	High-efficiency fluorescent and LED
Security	Electronic gate, security system, external security lighting
Clear Height	15', 20-22'
Yard	Fenced, paved (asphalt & concrete); bonus covered storage
Warehouse	Insulated, fully-sprinklered, gas space heating, skylights
Location	Easy access to I-35, I-235 and I-40. Just north of Downtown, south of Uptown, and north and east of Midtown.



PHOTOS



SW Building (office)



SW Building (office)



SW Building (office)



PHOTOS



SE Building

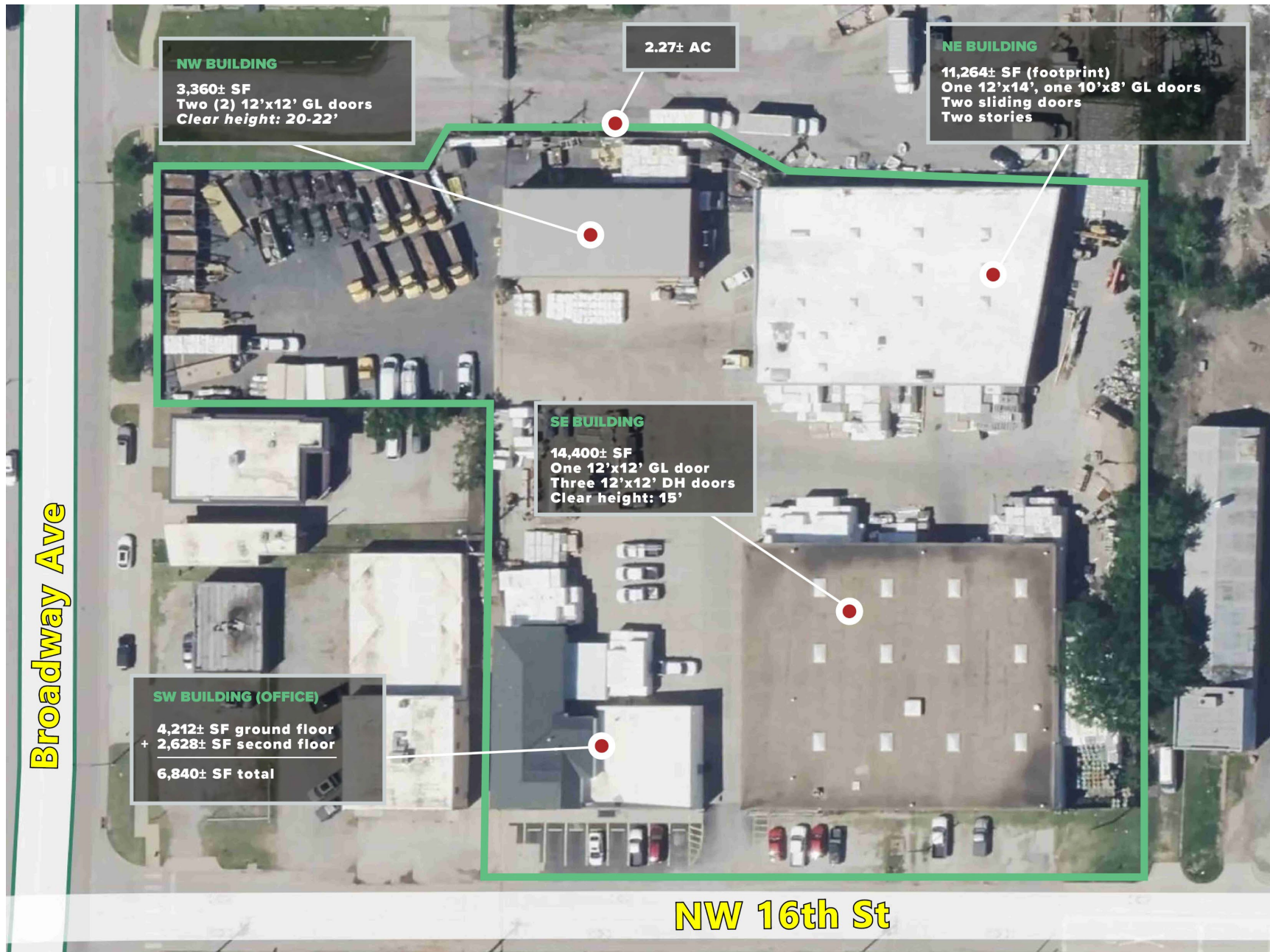


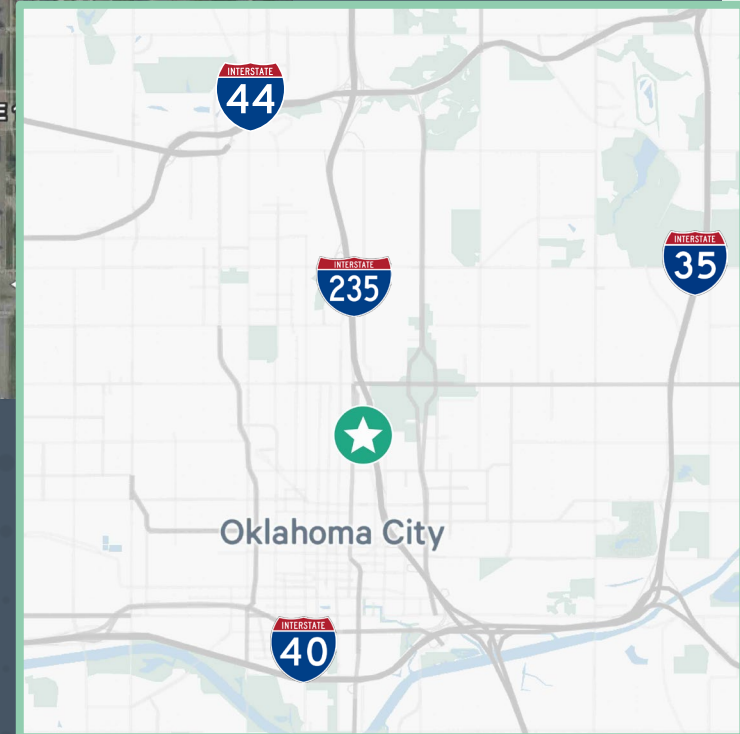
NE Building



NE Building

INDUSTRIAL COMPLEX AERIAL





AERIAL MAP



SW Building (office)



SE Building



NE Building



NW Building

INDUSTRIAL COMPLEX FOR SALE

19 NW 16th St
Oklahoma City, OK
73103

35,864± SF
2.27± AC
\$2,375,000

Randy Lacey, SIOR
Senior Vice President
+1 405 361 3149
randy.lacey@cbre.com

Chris Zach, SIOR, CPA
Vice President
+1 405 593 9544
chris.zach@cbre.com

