

—  
—  
0  
0

seventeenth  
street

1100

# HIVE + JOE = STREET LEVEL FLOW



Joe & The Juice

The Hive

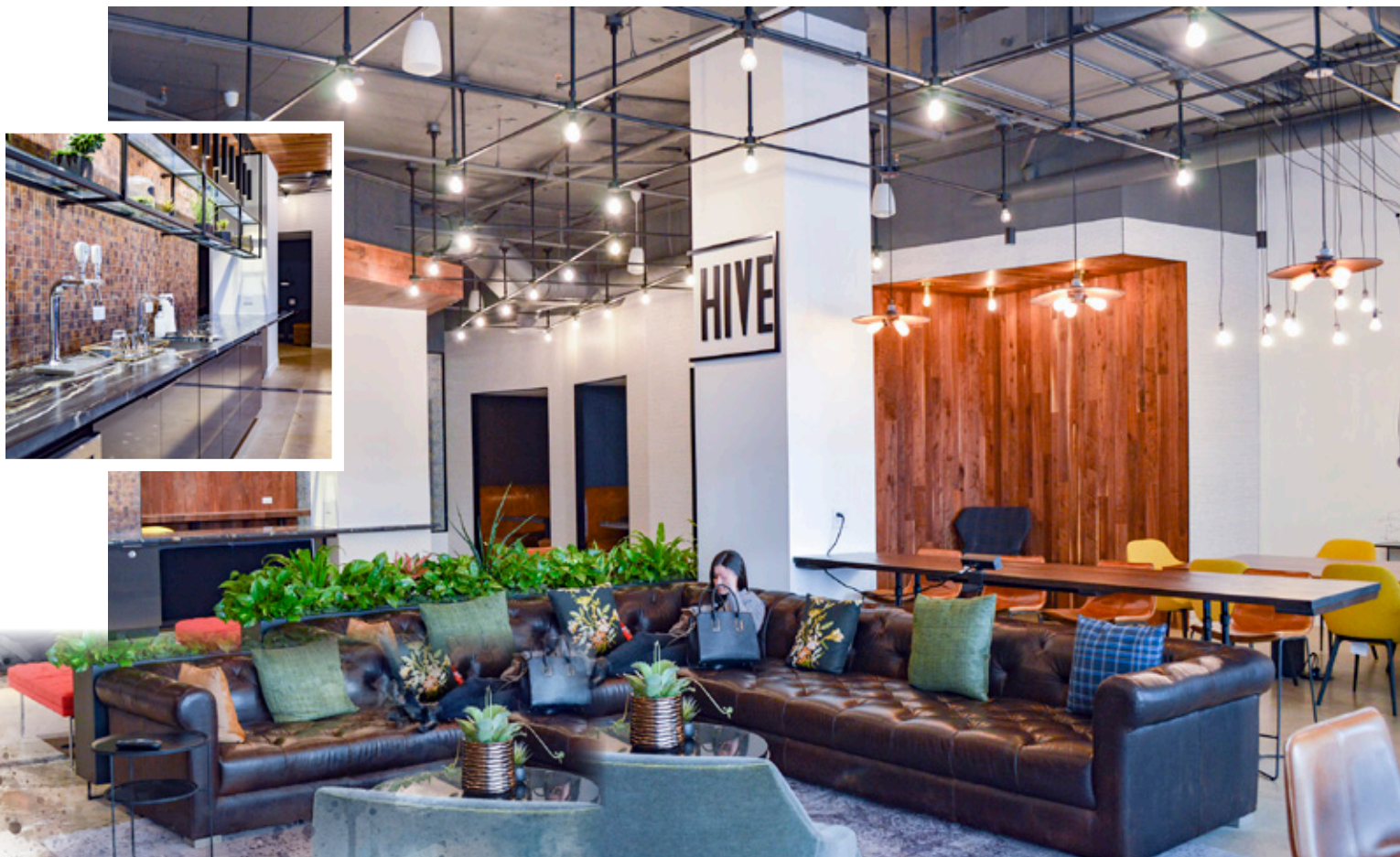
seventeenth  
street

# OPEN STREET LEVEL RETAIL

office to retail connectivity



**Joe & The Juice**  
caffeine for the win



**The Hive**  
amenity lounge

# OPEN-AIR NANO WINDOWS

allow for a connected  
workspace + lounge

1  
1  
0  
0



windowed conferencing

# ONSITE AMENITIES

conferencing • fitness • bikeroom



bike room



fitness center

# OPEN ACCESS

to area amenities

**22,838 RSF Contiguous**  
10th + 11th Floors



12	4,561 RSF	LEASED	
11	10,345 RSF FULL FLOOR	←	
10	12,493 RSF FULL FLOOR   10'8" SLAB-TO-SLAB		
9	LEASED		
8	6,636 RSF	LEASED	
7	LEASED		
6	LEASED	5,587 RSF SPEC SUITE C	
5	3,423 RSF SUITE 505	LEASED	
4	LEASED		
3	2,103 RSF SPEC SUITE	LEASED	
2	2,896 RSF	LEASED	
1	THE HIVE TENANT-ONLY LOUNGE	CONFERENCE	2,009 RSF
LL	2,009 RSF	FITNESS	LEASED

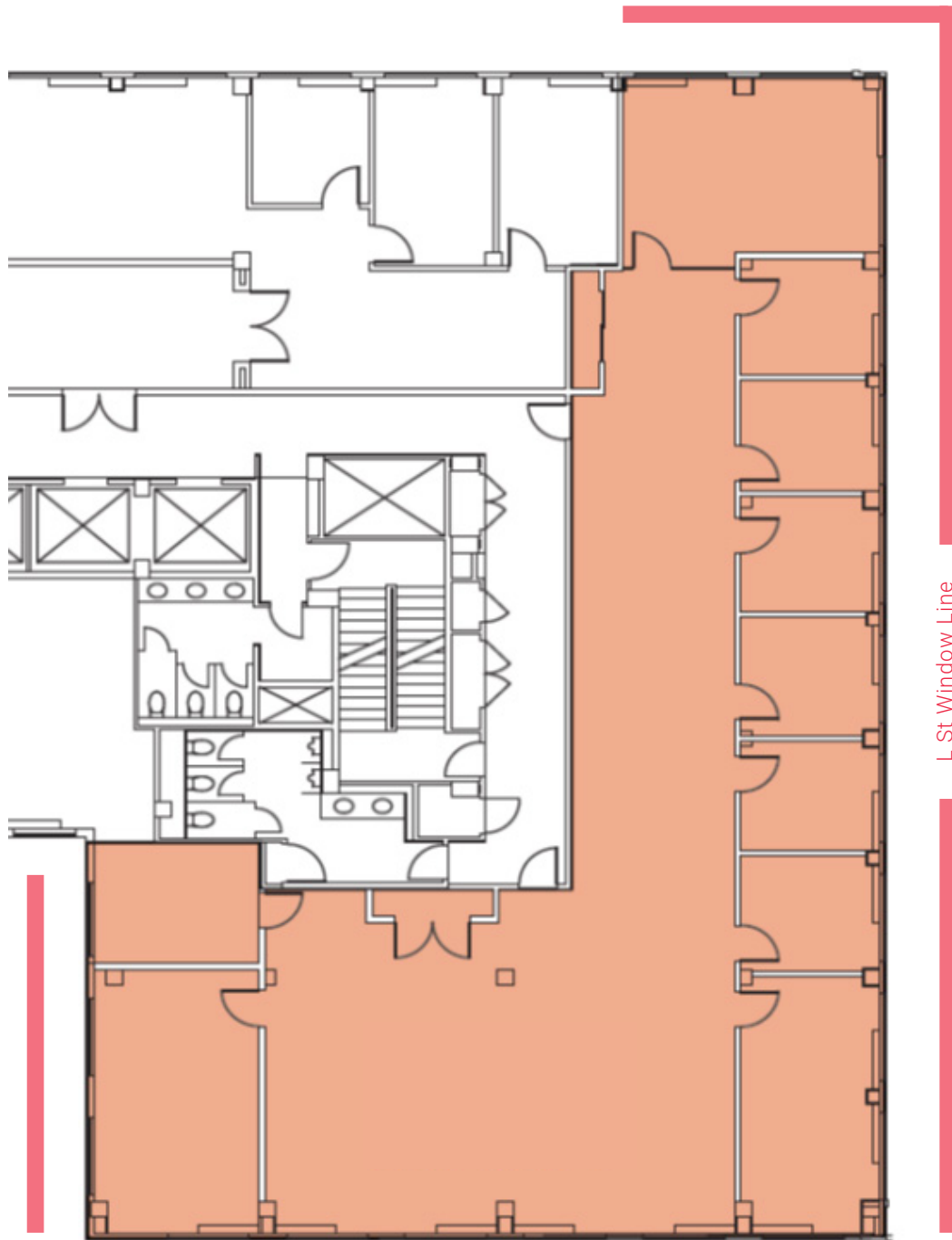
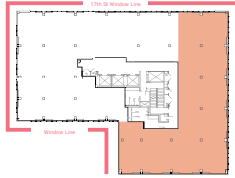
Availabilities



# YOUR OPTIONS ARE LIMITLESS

# 12TH FLOOR PLAN

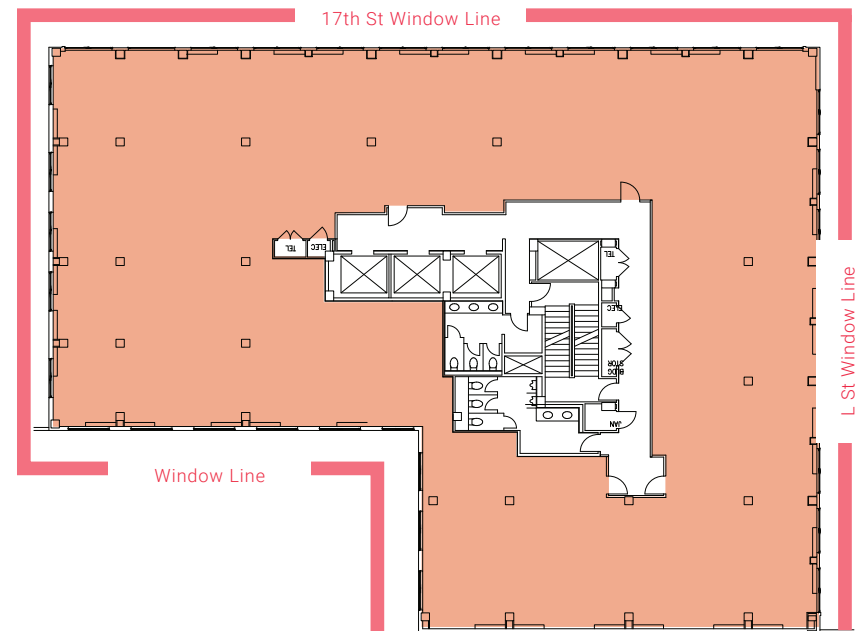
4,561 RSF AVAILABLE



L St Window Line

# 11TH FLOOR PLAN

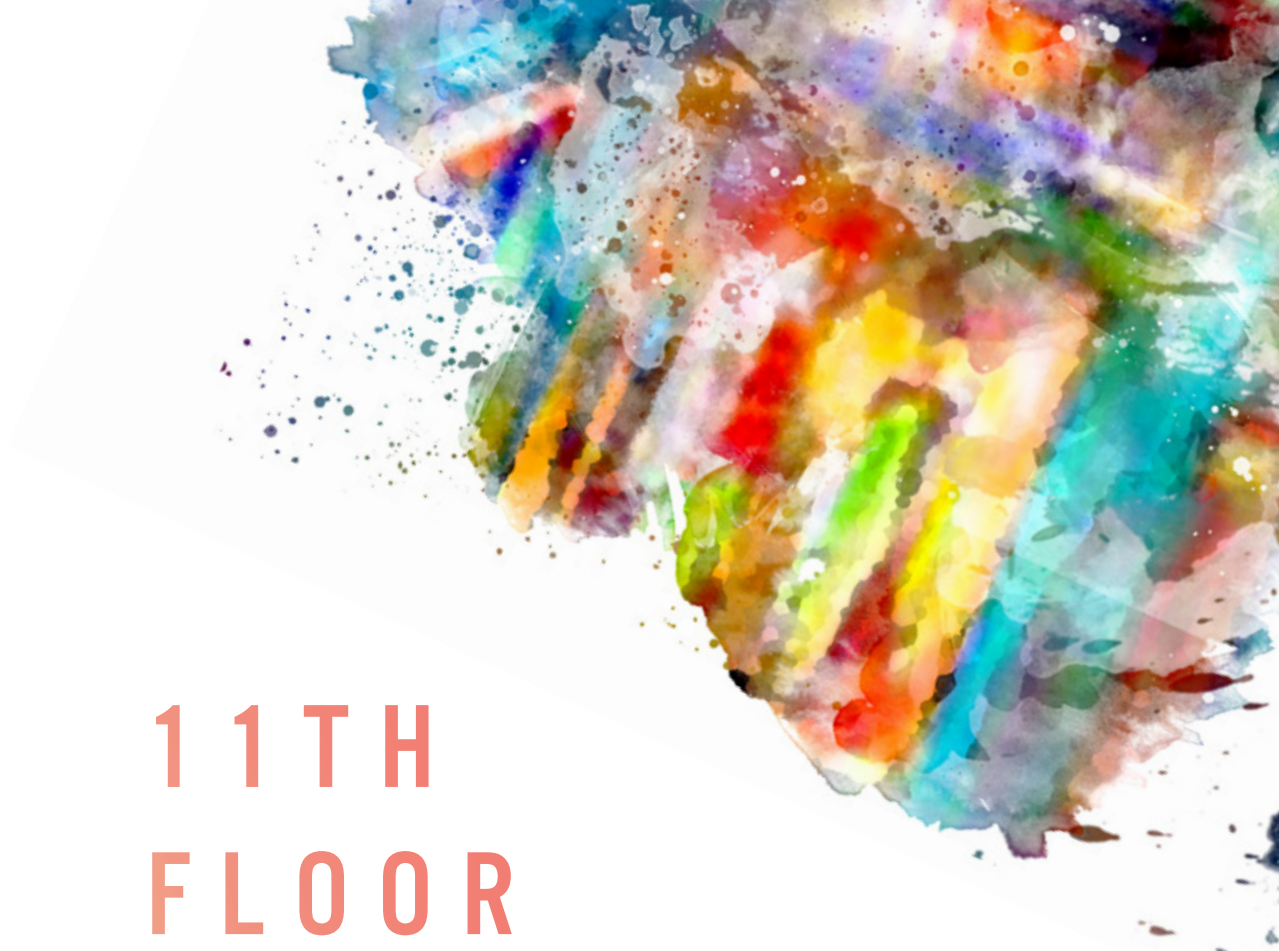
10,345 RSF  
UP TO 22,838 CONTIGUOUS



17th St Window Line

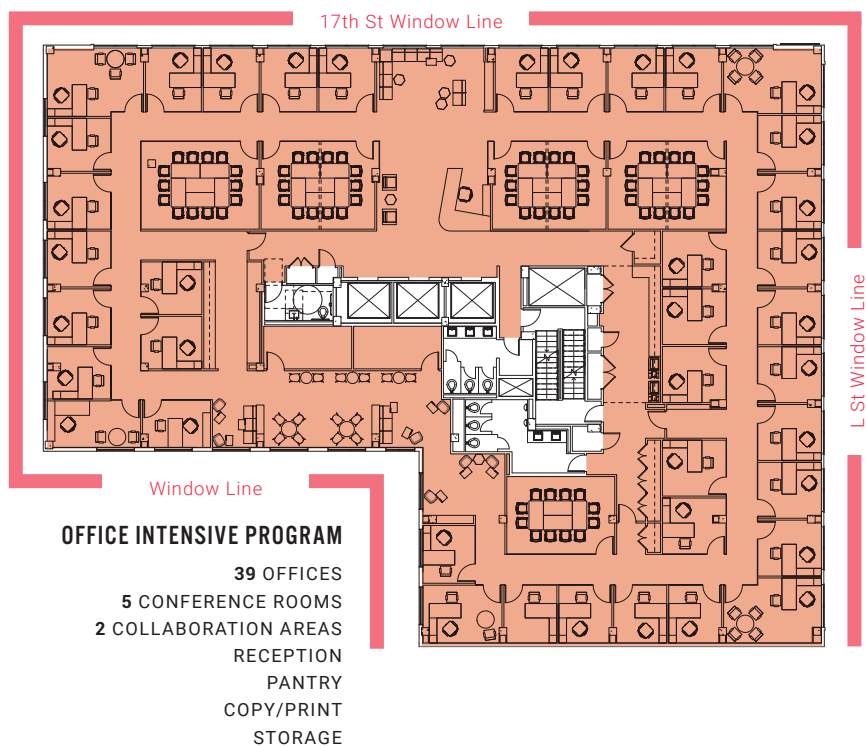
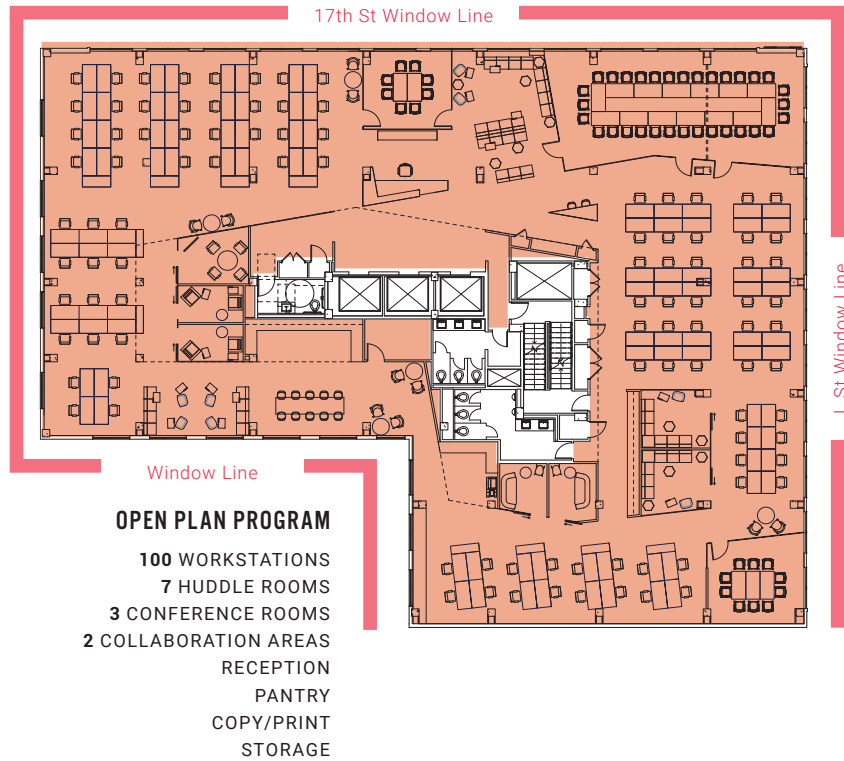
Window Line

L St Window Line

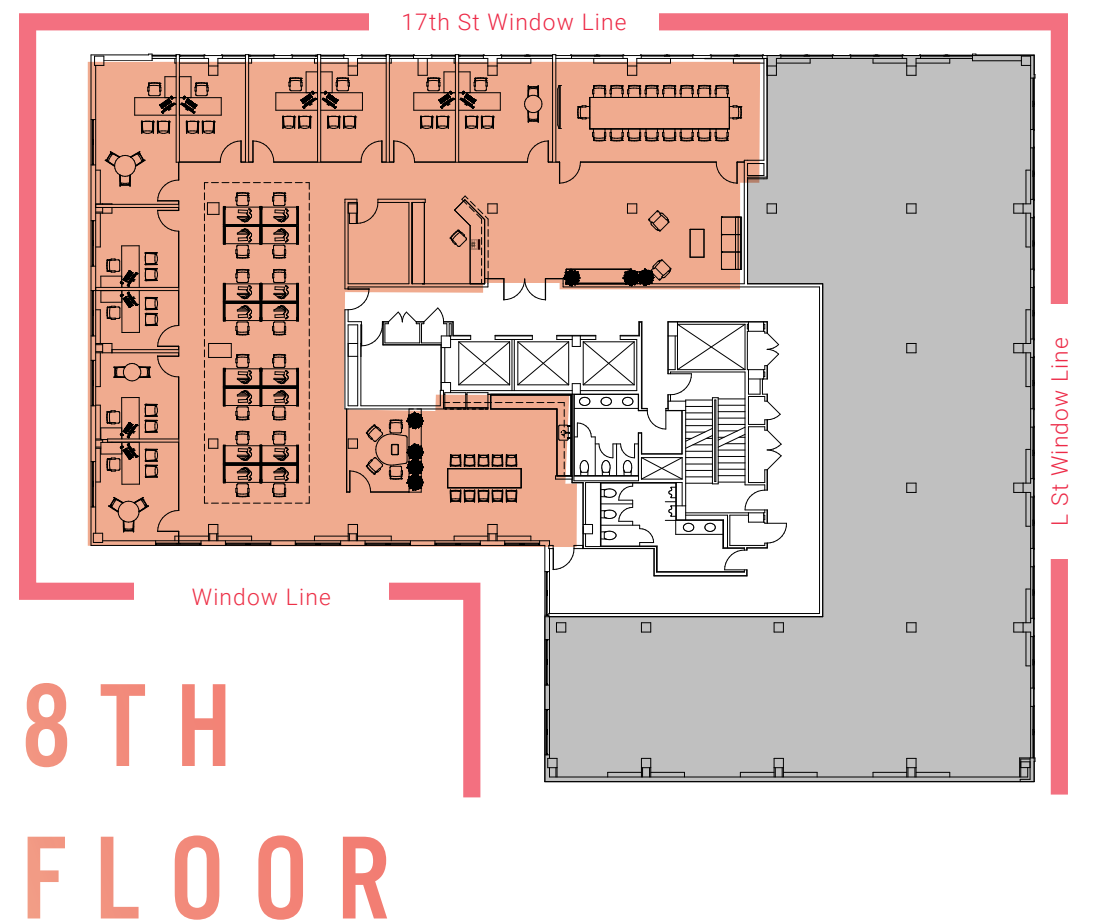


# 10TH FLOOR

12,493 RSF  
 UP TO 22,838 CONTIGUOUS  
 Hypothetical Test-Fit Options



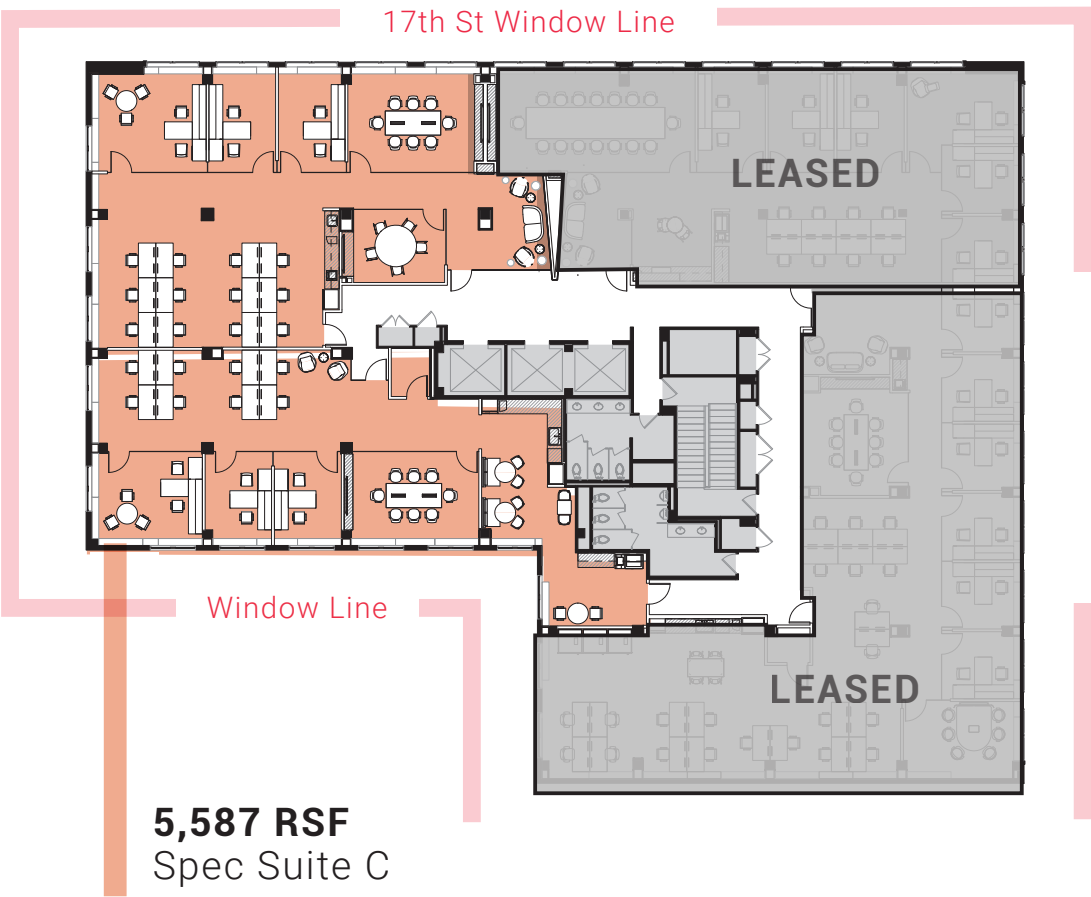
## 10TH FLOOR COLLABORATION AREA RENDERING



Suite 801 | 6,636 RSF  
 Hypothetical Test-Fit

# 6TH FLOOR SPEC SUITE

5,587 RSF  
Available



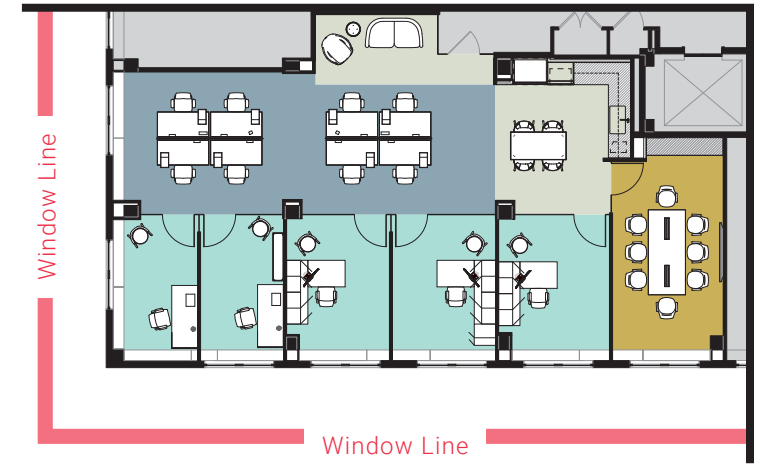
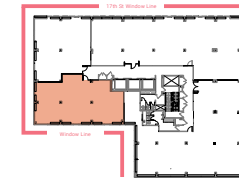
Scan or Click  
to view 600 C  
Matterport





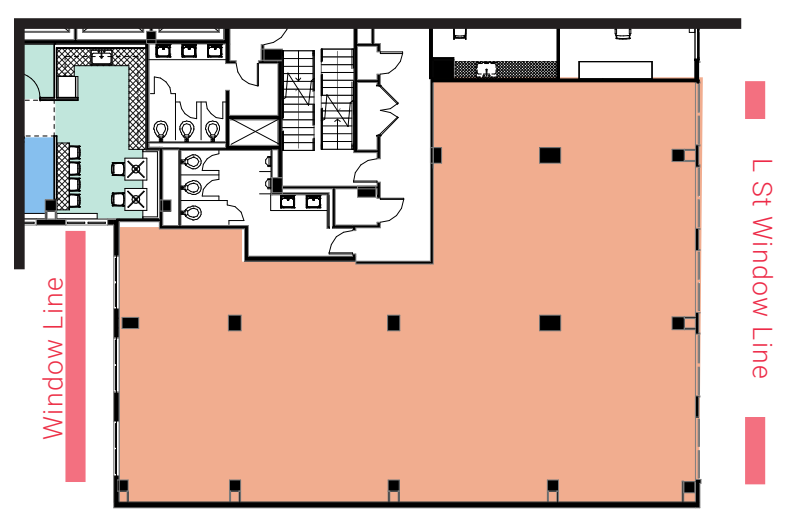
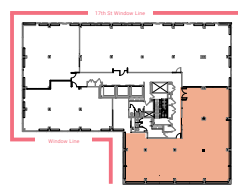
# 3RD FLOOR PLAN

Suite 330 | 2,103 RSF  
Spec Suite



# 5TH FLOOR PLAN

Suite 505 | 3,423 RSF  
Available Now



3RD FLOOR CONFERENCE AREA RENDERING



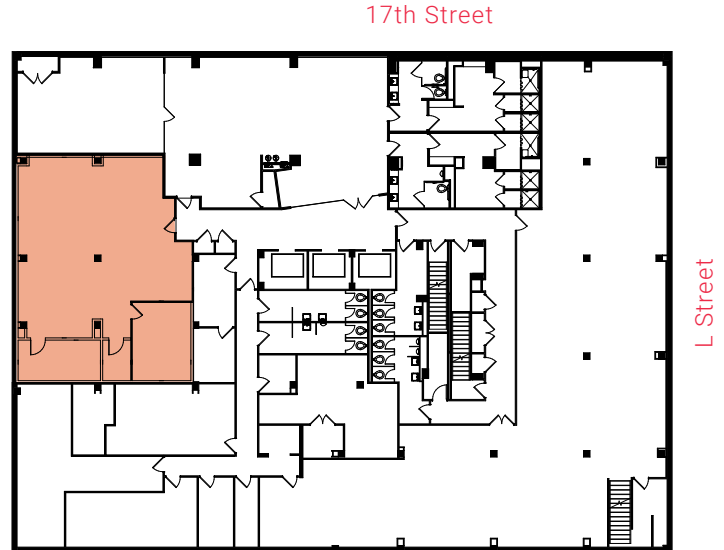
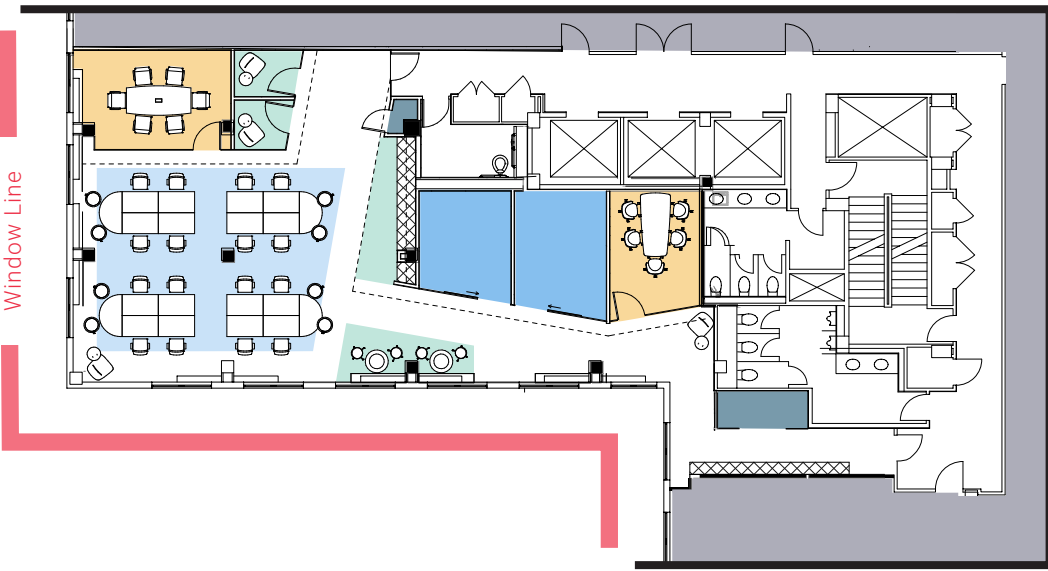
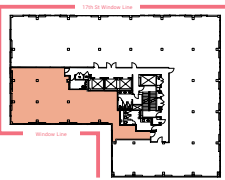


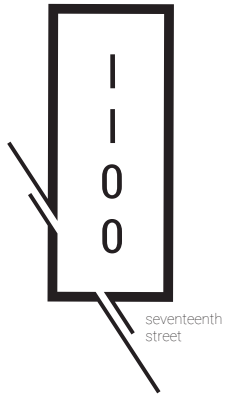
# LOWER LEVEL PLAN

2,009 RSF  
Blocking Plan

# 2ND FLOOR PLAN

Suite 210 | 2,896 RSF  
Hypothetical Test-Fit





## Contact Us for Leasing Information

**EVAN BEHR**

202 719 5642

[evan.behr@jll.com](mailto:evan.behr@jll.com)

**KRISTEN MATHIS**

202 719 5623

[kristen.mathis@jll.com](mailto:kristen.mathis@jll.com)

**JEANETTE KO**

202 719 6131

[jeanette.ko@jll.com](mailto:jeanette.ko@jll.com)

**MEGHAN MURRAY**

202 719 6904

[meghan.murray@jll.com](mailto:meghan.murray@jll.com)

